

The Youth Program Quality Assessment (YPQA)

What is the YPQA

The YPQA is a framework with researched-identified best practices that support environments to be safe, supportive, interactive, and engaging.

Assessments

Self Assessment (or Internal Assessment) happens within your staff team either through reflection conversations or observation of each other and reflection on the scores.

External Assessments happens with someone outside of your organization who is a trained reliable rater, observes your program and provides you back the data for your team to use in reflection.

Uses

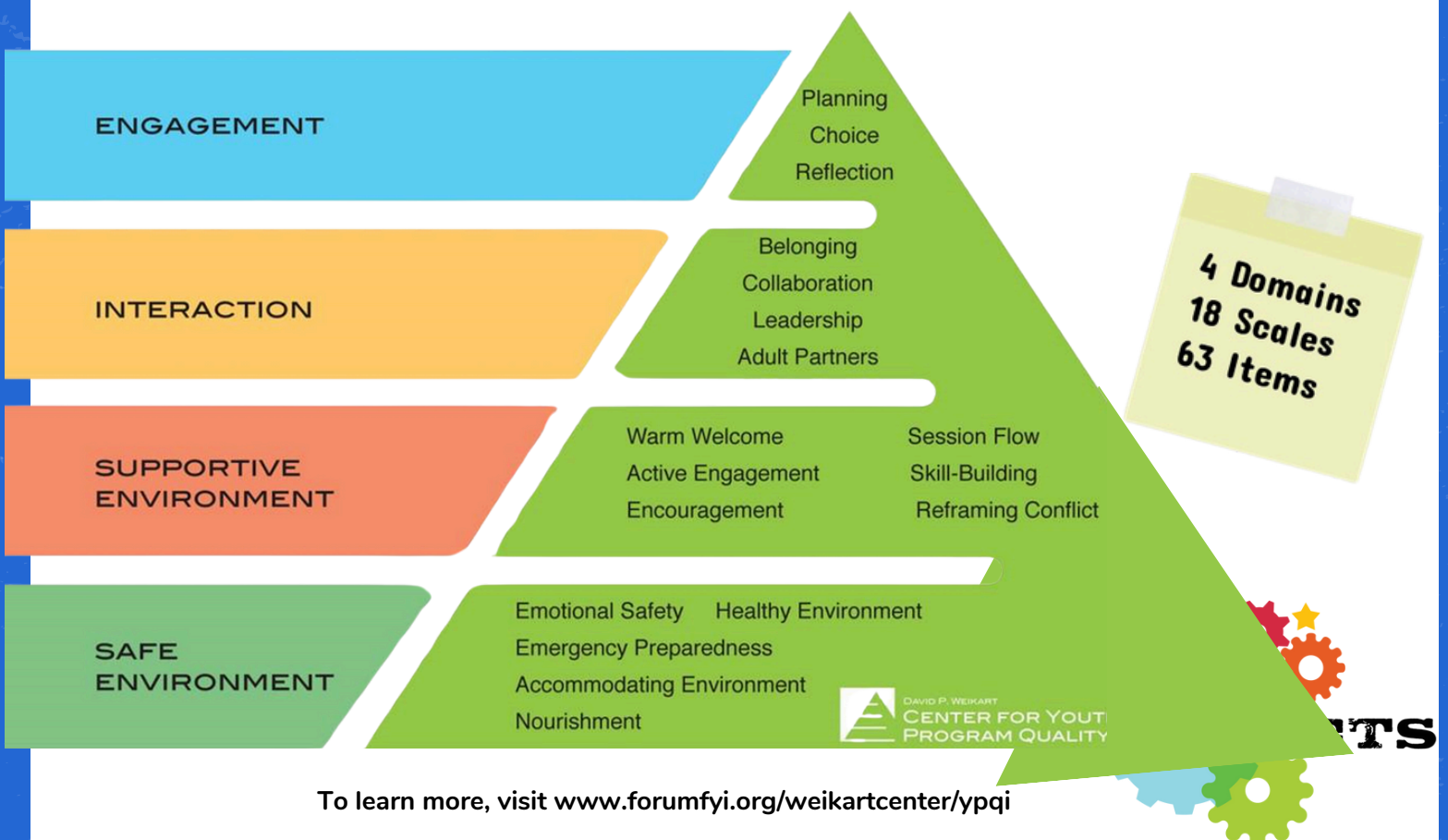
The YPQA can be used both as a planning tool, and as a measurement towards those best practices through self assessment or external assessment.

YPQI/ CPI/ CQI

The YPQA is part of a larger cycle of improvement. It may be referred to as Continuous Program Improvement or Continuous Quality Improvement. Either way, it involves Assessing, Planning, and Improvement.

Low Stakes!

The YPQA is focused on reflection and improvement, and not for saying whether a program is "good" or "bad".



To learn more, visit www.forumfyi.org/weikartcenter/ypqi

Reflection Worksheet

- What is a scale in the YPQA that you feel confident in and include in your program already? What does it look like? Sound like?
- Check out a copy of the YPQA. When you look at the descriptions of the items, where does your practice currently fall?
- What is a scale you are interested in exploring?
- Who from your team can you talk with about what these aspects look like in their work or can share with you how they use the YPQA as a framework or assessment?
- When will you follow up with that person?

Quality Youth
Work Starts
HERE!

