

SAMUEL H. MORGAN REGIONAL TRAIL RECONSTRUCTION

PORTIONS OF SAM MORGAN REGIONAL TRAIL WILL BE CLOSED APRIL - AUGUST. PLEASE USE DETOUR SHOWN BELOW IN YELLOW. TRAIL CONNECTION ON 35E BRIDGE TO REOPEN BY END OF MAY.

PROJECT GOALS



Improve safety for all users



Improve multimodal connections

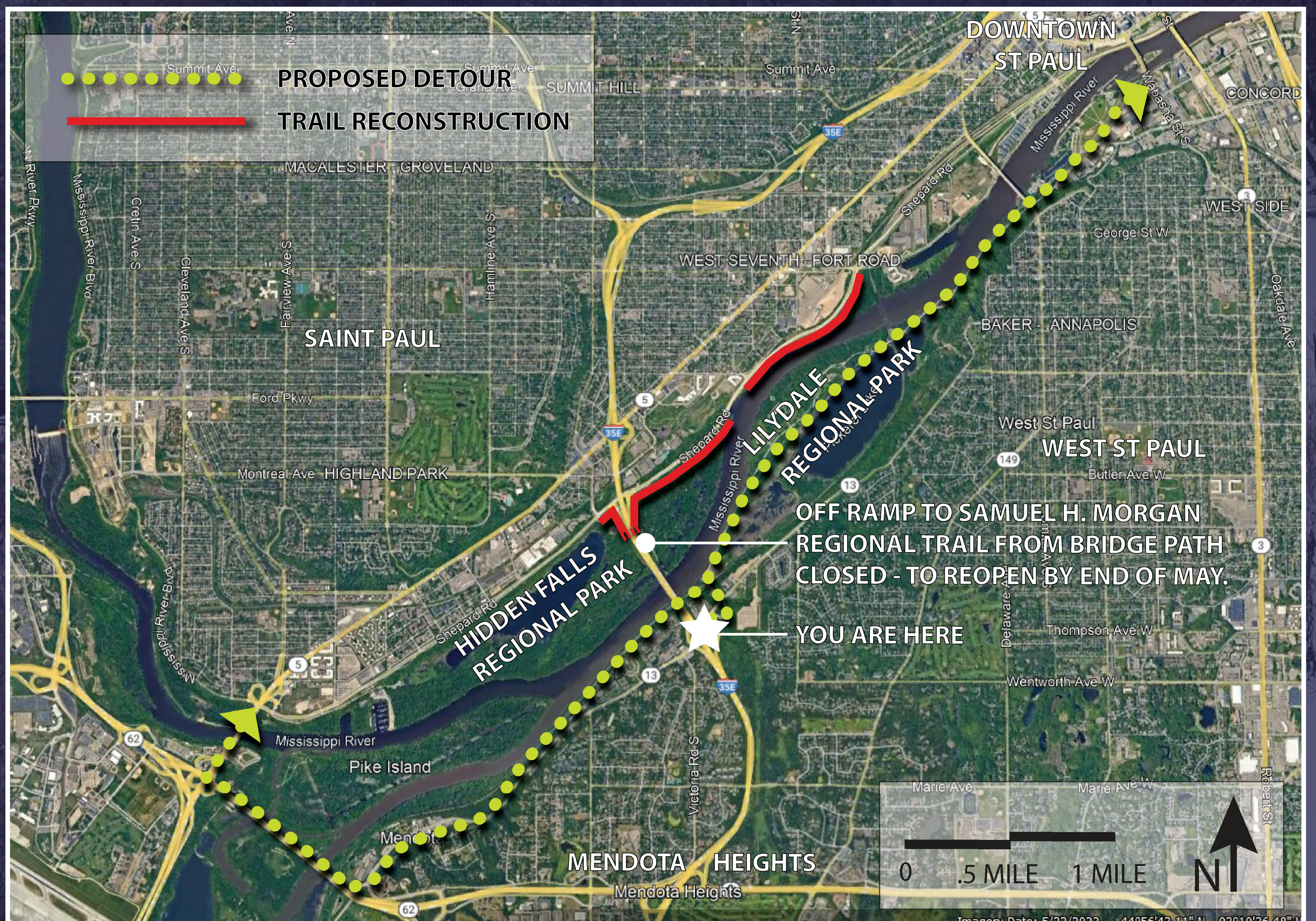


Promote an active and healthy lifestyle

ABOUT THE PROJECT

The City of Saint Paul Parks and Recreation Department will be reconstructing the Samuel H. Morgan Regional Trail project between Lexington Parkway and Randolph. The off ramp to Samuel H. Morgan Trail from the 35E bridge path will be closed. Construction will begin April 2025 and be complete by the end of August 2025. The project includes demolition of the existing trail, earthwork, preparation of trail subbase, paving, installation of lighting, signage, benches, and tree planting.

SEGMENT 1: LEXINGTON PARKWAY TO RANDOLPH AVE APRIL - AUGUST 2025



QUESTIONS? CONTACT US.

Bryan Murphy, ASLA (he, him, his)
bryan.murphy@ci.stpaul.mn.us | 651-266-6411

If you need this translated or in an alternative format, please call us at 651-266-6400.
¿Necesita esta traducción? Comuníquese con nosotros al 651-266-6400.
Ma u baahan tahay tarjamadaan Nago soo wac 651-266-6400.
Xav tau qhov no txhais los? Hu rau peb ntawm 651-266-6400.

A portion of funding provided by:



SAINT PAUL
PARKS AND RECREATION