

Prospect Park Site Improvements

West Side Community Council
Land Use Committee

March 26, 2025



SAINT PAUL
MINNESOTA

OUTLINE

- 1 Project information, overview, schedule, and engagement summary**
- 2 Proposed Site Layout and Improvements**
- 3 Play Equipment Concepts and Discussion**
- 4 Next Steps**

Project Overview and Schedule

IMPROVEMENTS INCLUDE:

- Removal and replacement of play equipment and play area surfacing
- Upgrades to paths and accessibility
- New site furnishings
- Landscaping
- Public Art

PROJECT FUNDING:

- ~\$710,000
- CDBG (federal) and Parkland Dedication

TENTATIVE SCHEDULE



We are here

Summary of Engagement

Prospect Park Play Area Improvements

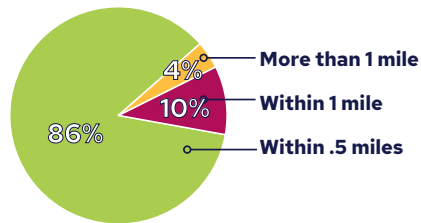
Feedback Summary

October - November 2024

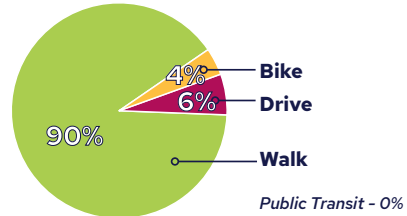
Survey #1 49 Respondents

Responses from the survey are summarized in this document. All feedback received is valued and evaluated thoroughly.

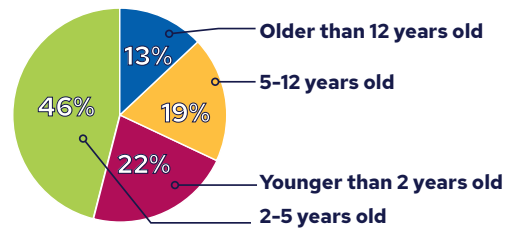
Where do you live in relation to Prospect Park?



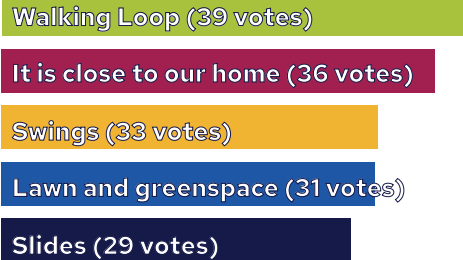
How do you get to the park?



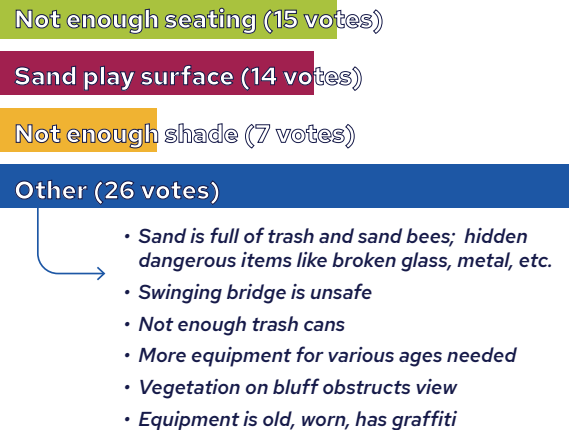
What are the ages of your children?



What are your favorite things about the play area? (top five)



What are your least favorite things about the play area?



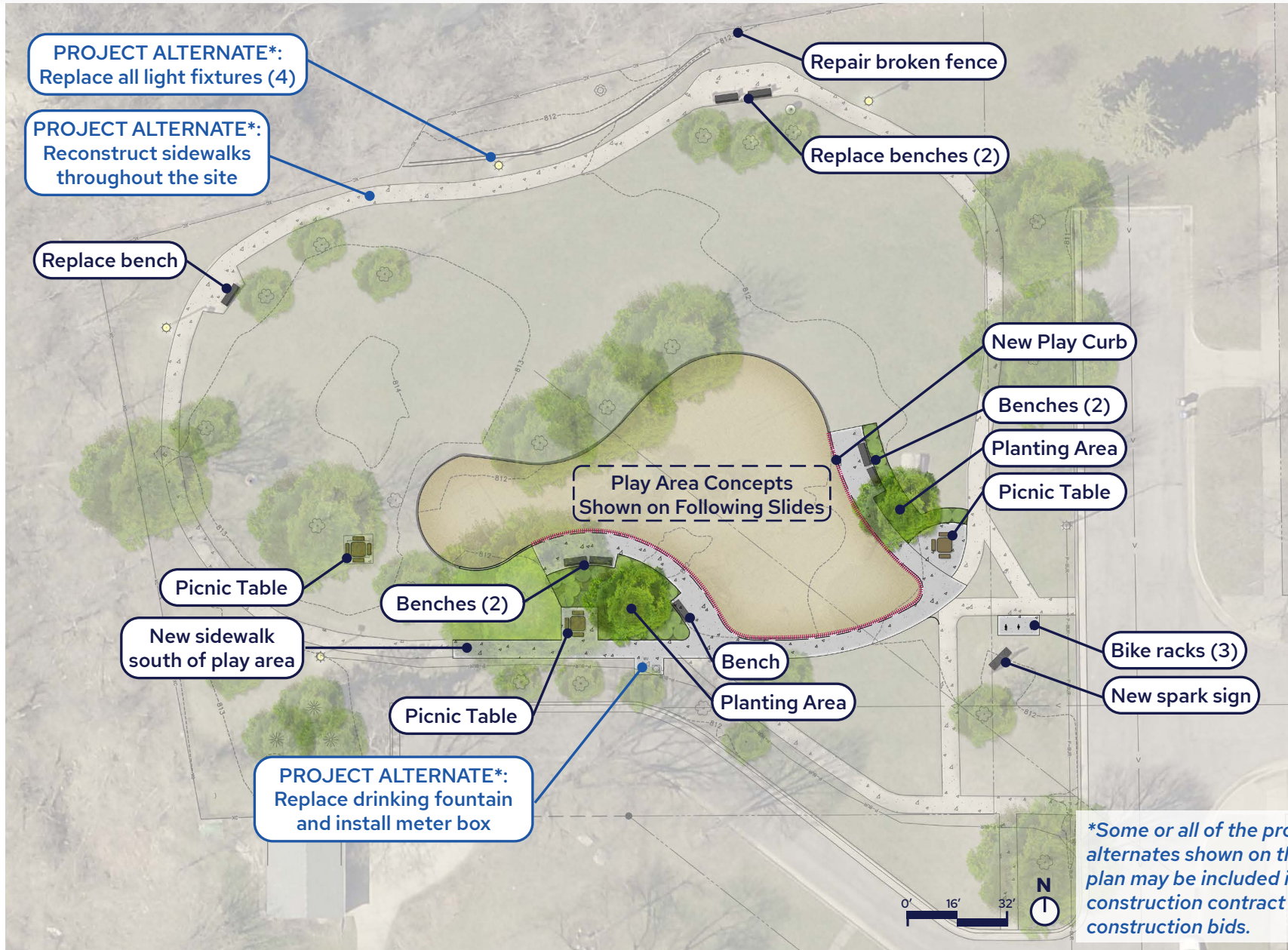
What is missing or needed in the play area? (summary of responses)

- More equipment for a variety of ages
- Fitness equipment, playground equipment for adults
- Resilient surface or wood chips instead of sand surfacing
- Outdoor educational boards
- Shade for caregivers
- Inclusion of kids with special needs
- Lookout spot to see downtown skyline
- Would love to see a basketball hoop!
- More swings
- Native landscaping, community garden
- Merry-go-round
- Safer equipment
- Tall tower - enhance the idea of "prospect"
- Water feature/splash pad
- Nature play space
- Sound producing toys

Per City of Saint Paul ordinance, 1% of the project budget will be allocated for public art. Please list any public artists you feel should be considered for this project, or any art themes or items you'd like to see incorporated into the play area. (summary of responses)

- Mural by Rachele Krivichi
- Something with water that highlights the amazing views!
- Story book walk at Thompson is awesome and could go around the walking path
- Themes that tie to the history of the area
- Indigenous community, Dakota artist, and first people to live here; incorporating the river theme; inspiration from birds (hawks and eagles) that fly over this park
- Caprice Glasser
- Mississippi River and views - homage to the high bridge
- River, birds, native plants, natural setting, West Side community
- Nature! Animal and natural influenced art.
- Riverfront theme
- Natural earth shades, not primary or bright coloring
- Something indigenous or representative of the Latino community on the West Side
- Artist who has ties to the West Side.
- Ray Charest or Sylvia De Sonia
- Coordinate with CLUES to hire a local Latinx artist.

Proposed Site Layout



Play Equipment Concepts



Concept 1 - Treehouse

- A “traditional” approach to play equipment featuring post and deck structures.
- A tall main structure in the 5-12 area acts as a treehouse or lookout where kids can see the River, downtown, and the Prospect Park neighborhood.



Concept 2 - Birds and Bugs

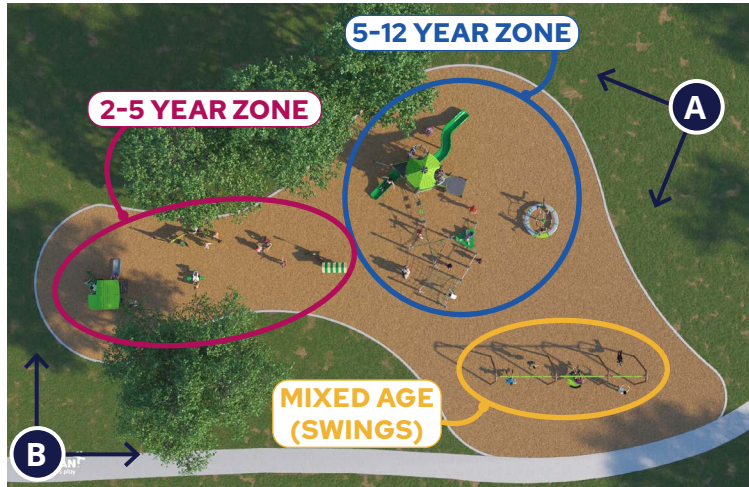
- The main equipment features nets and focuses on climbing.
- The equipment forms allude to webs, nests, and other habitat features for local insects, birds, and other animals.



Play Equipment Concept 1

TREEHOUSE

Plan Layout



Play Equipment Concept 1

TREEHOUSE

Equipment Details (5-12)



Play Equipment Concept 1

TREEHOUSE

Equipment Details (2-5)



Play Equipment Concept 2

BIRDS AND BUGS

Plan Layout



Play Equipment Concept 2

BIRDS AND BUGS

Equipment Details (2-5)



Play Equipment Concept 2

BIRDS AND BUGS

Equipment Details (2-5)



Play Equipment Concept Discussion



Concept 1 - Tree House

- What do you like or dislike about either of the concepts?
- What's missing? What else would you like to see?
- What do you think of the equipment colors?
- What is your favorite piece of equipment shown in these concepts?



Concept 2 - Birds and Bugs



*Take the online survey
to share your thoughts*



Next Steps:

- **Pop-up Engagement at Prospect Park**
Thursday, April 3rd from 11:00am - 1:00pm
 - **Complete construction documents**
 - **St. Paul Site Plan Review**
 - **Construction bidding**
 - **Construction start this summer (2025)**
Pending construction bids
-

Questions or comments?

Katie Hamerlinck, Project Manager
katie.hamerlinck@ci.stpaul.mn.us
651-266-6414

www.stpaul.gov/play-area-projects

