

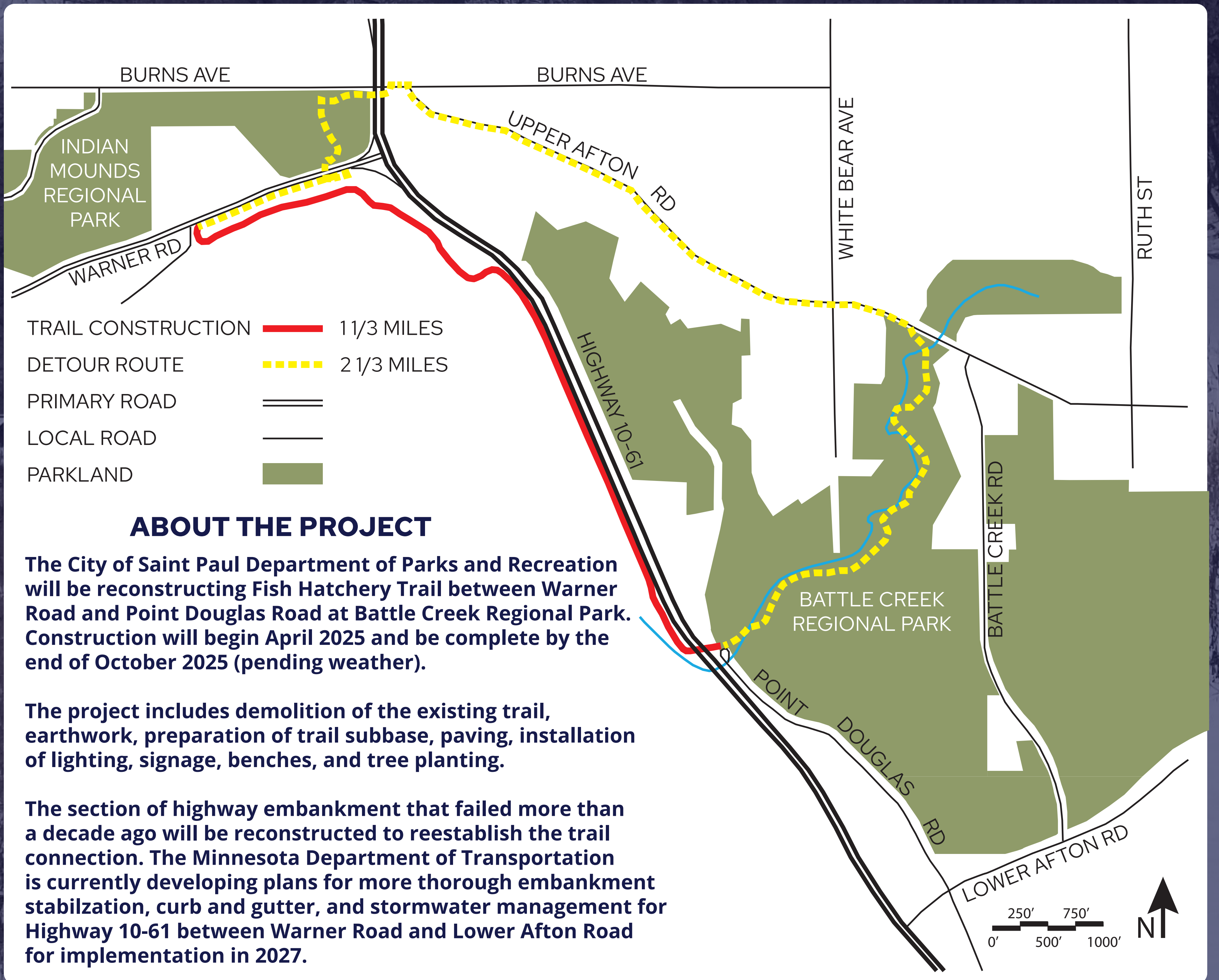


FISH HATCHERY TRAIL RECONSTRUCTION

**FISH HATCHERY TRAIL
WILL BE CLOSED APRIL - OCTOBER
PLEASE USE DETOUR
SHOWN BELOW IN YELLOW**

PROJECT GOALS

-  Improve safety for all users
-  Improve multimodal connections
-  Promote an active and healthy lifestyle



QUESTIONS? CONTACT US.

Bryan Murphy, ASLA (he, him, his)
bryan.murphy@ci.stpaul.mn.us | 651-266-6411

If you need this translated or in an alternative format, please call us at 651-266-6400.
¿Necesita esta traducción? Comuníquese con nosotros al 651-266-6400.
Ma u baahan tahay tarjamadaan Nago soo wac 651-266-6400.
Xav tau qhov no txhais los? Hu rau peb ntawm 651-266-6400.



SAINT PAUL
PARKS AND RECREATION

A portion of funding provided by:

