

COMMERCIAL PIPE CONNECTION ABANDONMENT – PARTIALLY LINED TUNNEL, STD PLATE 2601

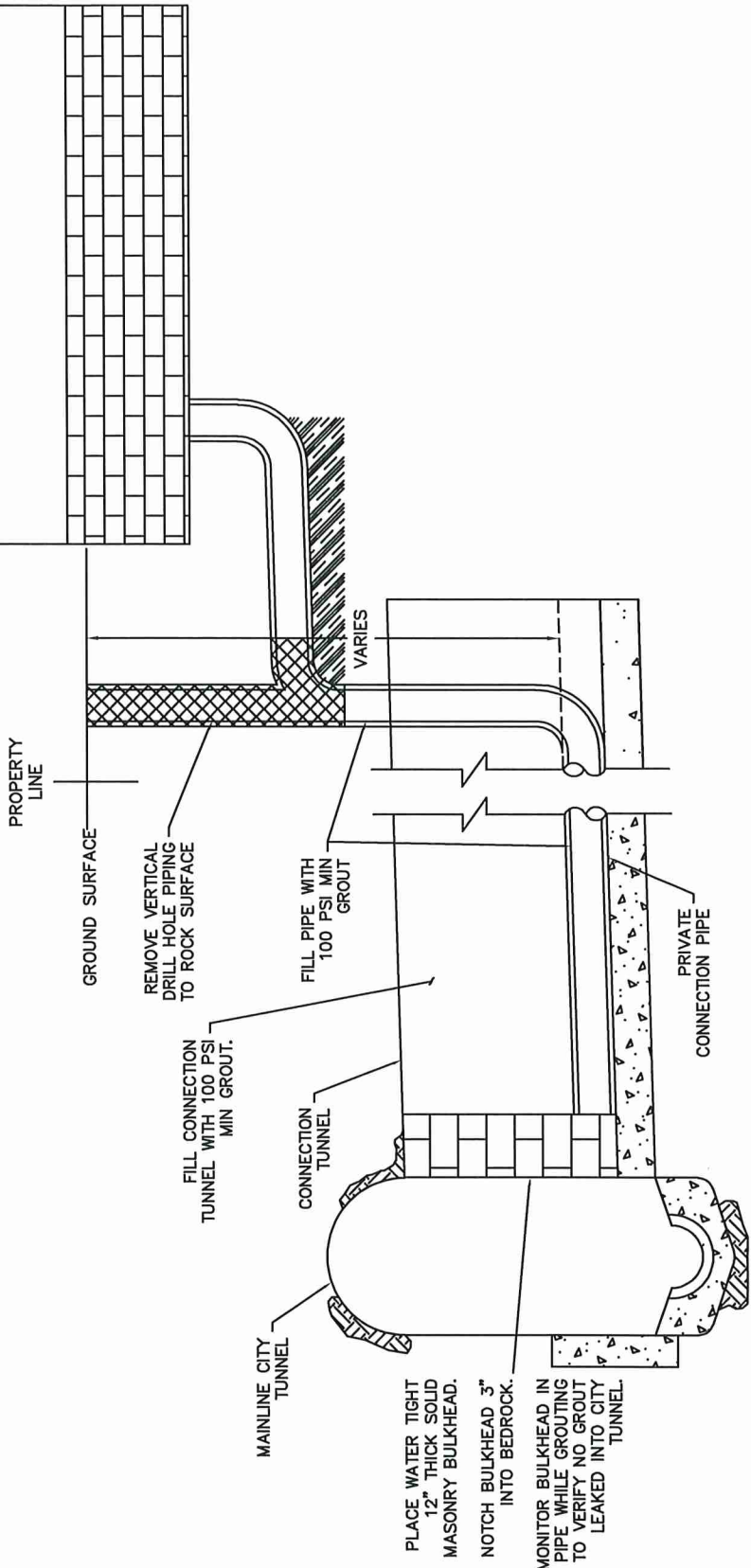
NOTES:

1. REFER TO STANDARD SPECIFICATIONS FOR CONSTRUCTING AND REPAIRING PRIVATE SEWER CONNECTIONS FOR FURTHER INFORMATION AND DETAILS. IF THERE ARE CONFLICTS BETWEEN THE SPECIFICATION AND STANDARD PLATE, THE STANDARD PLATE GOVERNS.
2. THIS PLATE IS FOR STORM OR SANITARY CONNECTION ABANDONMENTS FOR COMMERCIAL PROPERTIES.
3. CONTRACTOR TO SUBMIT TO EW-SEWERCOUNTER@CI.STPAUL.MN.US.
 - A. WORK PLAN AND SCHEDULE. WORK PLAN TO INCLUDE FIELD MEASURE PIPE DIAMETER(S). TWO WEEKS BEFORE CONSTRUCTION.
 - B. MATERIAL SHOP DRAWINGS AND SPECIFICATIONS TWO WEEKS BEFORE CONSTRUCTION
 - C. POST-CONSTRUCTION PHOTOS SHOWING ALL PIPE, BULKHEADS, AND CONNECTIONS WITHIN 1-WEEK POST-CONSTRUCTION

I hereby certify that this plan, specification or report was prepared by me or under my direct supervision and that I am a duly Licensed Professional Engineer under the laws of the State of Minnesota

Arnon D. Hass
 AARON D. HASS

Date 02-11-2025 Lic. No. 26424



APPROVED
Marketta 3/21/25
 CITY ENGINEER

CITY OF ST. PAUL
 DEPARTMENT OF PUBLIC WORKS
 COMMERCIAL PIPE CONNECTION ABANDONMENT
 PARTIALLY LINED TUNNEL

Date of Revision
 FEB 2025

Standard Plate No.
 2601A