

# 2025 Adopted Budget: Public Health

**Department Mission:** Protect and improve the health of people and the environment in Ramsey County

Learn More: <https://www.ramseycounty.us/your-government/departments/health-and-wellness/public-health>

## Department Facts

- **Total General Fund Budget:** -
- **Total Special Fund Budget:** \$947,400
- **Total FTEs:** 6.60

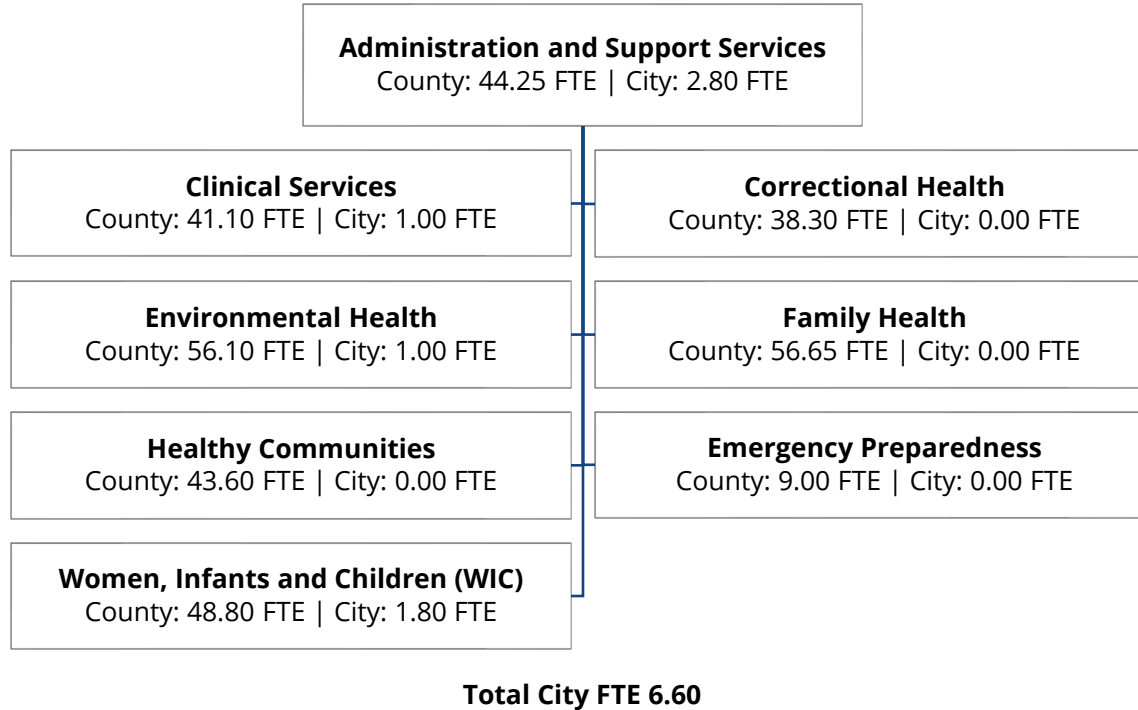
## Department Goals

- Provide leadership as a prevention strategist - working to promote health and racial equity.
- Ensure an adequate public health infrastructure.
- Promote healthy communities and healthy behaviors.
- Prevent the spread of infectious diseases.
- Protect against environmental hazards.
- Prepare for and respond to disasters.
- Ensure the quality and accessibility of health services.

## Recent Accomplishments

- 24,768 low-income mothers, infants, and children were provided with nutrition counseling and monthly vouchers for nutritious foods.
- 15,444 laboratory tests performed.
- 13,463 clinical service visits and 4,113 vaccines given.

# Public Health Organizational Chart



## Department Description

Saint Paul – Ramsey County is one of the largest local public health departments in Minnesota, serving Saint Paul and all other cities in Ramsey County. The department traces its origins to the appointment of the first public health officer by the city of Saint Paul in 1854. Saint Paul and Ramsey County's previously separate public health departments merged in 1997 through a joint powers agreement. This merge created Saint Paul-Ramsey County Public Health. The administration of this function now resides with the County. As resignations or retirements of City staff occur, the positions are filled by the County, and the City budget shows a decline in FTEs and dollars associated with paying their salary and benefits. All costs are reimbursed by Ramsey County and the County is responsible for the portion of the tax levy that covers these expenses. The City of Saint Paul does not levy for public health services.

**2025 Adopted Budget  
HEALTH**

**Fiscal Summary**

	<b>FY 2022 Actuals</b>	<b>FY 2023 Adopted Budget</b>	<b>FY 2024 Adopted Budget</b>	<b>FY 2025 Adopted Budget</b>	<b>Change From Prior Year</b>	<b>FY 2024 Adopted Budget FTE</b>	<b>FY 2025 Adopted Budget FTE</b>
<b>Spending</b>							
250: PUBLIC HEALTH	1,249,934	1,198,186	1,264,676	947,400	(317,277)	9.94	6.60
<b>Total</b>	<b>1,249,934</b>	<b>1,198,186</b>	<b>1,264,676</b>	<b>947,400</b>	<b>(317,277)</b>	<b>9.94</b>	<b>6.60</b>
<b>Financing</b>							
250: PUBLIC HEALTH	1,286,353	1,198,186	1,264,676	947,400	(317,276)		
<b>Total</b>	<b>1,286,353</b>	<b>1,198,186</b>	<b>1,264,676</b>	<b>947,400</b>	<b>(317,276)</b>		

**Budget Changes Summary**

In 1997, the City's Public Health department merged with Ramsey County's through a joint powers agreement. The administration of public health services now resides with the County. As resignations or retirements of City staff occur, the positions are filled by County personnel. As City employees resign or retire, the City budget shows a decline in FTEs and dollars associated with paying their salary and benefits. All salary and benefit costs are reimbursed by Ramsey County and the County is responsible for the portion of the property tax levy that covers these expenses. The 2025 adopted budget reflects the retirement or separation of 5 employees, resulting in a decrease of 3.34 FTE and an overall decrease of \$317,277 compared to the 2024 adopted budget, which reflects current service level adjustments for salaries and benefits.

## 250: Public Health

## Public Health

The Public Health Fund includes any salary and fringe benefit costs for the City's remaining Public Health employees. These costs are reimbursed by Ramsey County.

### Current Service Level Adjustments

	Change from 2024 Adopted		
	Spending	Financing	FTE
5 employees retired or separated from service, resulting in a decrease of 3.34 FTE in Public Health	(317,277)	(317,277)	(3.34)
<b>Subtotal:</b>	<b>(317,277)</b>	<b>(317,277)</b>	<b>(3.34)</b>
<b>Fund 250 Budget Changes Total</b>	<b>(317,277)</b>	<b>(317,277)</b>	<b>(3.34)</b>

# **Public Health Spending Reports**

**CITY OF SAINT PAUL**  
**Spending Plan by Department**

**Department: HEALTH**  
**Fund: PUBLIC HEALTH**

**Budget Year: 2025**

	FY 2022 Actuals	FY 2023 Adopted Budget	FY 2024 Adopted Budget	FY 2025 Adopted Budget	Change From Prior Year
<b>Spending by Major Account</b>					
EMPLOYEE EXPENSE	1,249,730	1,186,715	1,253,205	942,598	(310,608)
SERVICES	204	11,471	11,471	4,802	(6,669)
<b>Total Spending by Major Account</b>	<b>1,249,934</b>	<b>1,198,186</b>	<b>1,264,676</b>	<b>947,400</b>	<b>(317,277)</b>
<b>Spending by Accounting Unit</b>					
25040200 - PUBLIC HEALTH SUPPORT SERVICES	458,704	478,601	505,569	488,522	(17,048)
25040201 - PUBLIC HEALTH COMMUNICATIONS	136,553	112,643	122,380	127,080	4,700
25040202 - PUBLIC HEALTH MAINTENANCE	82,815	85,390	87,465	-	(87,465)
25040205 - HEALTH LABORATORY	95,875	92,746	100,182	-	(100,182)
25040210 - HEALTH LAB SPECIAL	-	1,283	1,245	-	(1,245)
25040215 - BIRTH AND DEATH RECORDS	-	146	94	-	(94)
25040220 - COMMUNICABLE DISEASE CONTROL	222,703	165,824	180,854	117,847	(63,007)
25040225 - FAMILIES IN CRISIS	-	875	875	-	(875)
25040230 - FAMILY PLANNING	-	465	416	-	(416)
25040235 - WIC SUPPLEMENTAL FOOD	253,284	255,572	261,008	213,951	(47,057)
25040240 - LEAD BASED PAINT HAZZARD	-	4,641	4,588	-	(4,588)
<b>Total Spending by Accounting Unit</b>	<b>1,249,934</b>	<b>1,198,186</b>	<b>1,264,676</b>	<b>947,400</b>	<b>(317,277)</b>

# **Public Health Financing Reports**

**CITY OF SAINT PAUL**  
**Financing Plan by Department**

**Department: HEALTH**  
**Fund: PUBLIC HEALTH**

**Budget Year: 2025**

	<b>FY 2022 Actuals</b>	<b>FY 2023 Adopted Budget</b>	<b>FY 2024 Adopted Budget</b>	<b>FY 2025 Adopted Budget</b>	<b>Change From Prior Year</b>
<b>Financing by Major Account</b>					
CHARGES FOR SERVICES	1,286,353	1,198,186	1,264,676	947,400	(317,276)
<b>Total Financing by Major Account</b>	<b>1,286,353</b>	<b>1,198,186</b>	<b>1,264,676</b>	<b>947,400</b>	<b>(317,276)</b>
<b>Financing by Accounting Unit</b>					
25040200 - PUBLIC HEALTH SUPPORT SERVICES	464,648	478,601	505,569	488,522	(17,047)
25040201 - PUBLIC HEALTH COMMUNICATIONS	138,590	112,643	122,380	127,080	4,700
25040202 - PUBLIC HEALTH MAINTENANCE	87,514	85,390	87,465	-	(87,465)
25040205 - HEALTH LABORATORY	97,109	92,746	100,182	-	(100,182)
25040210 - HEALTH LAB SPECIAL	-	1,283	1,245	-	(1,245)
25040215 - BIRTH AND DEATH RECORDS	-	146	94	-	(94)
25040220 - COMMUNICABLE DISEASE CONTROL	229,636	165,824	180,854	117,847	(63,007)
25040225 - FAMILIES IN CRISIS	-	875	875	-	(875)
25040230 - FAMILY PLANNING	-	465	416	-	(416)
25040235 - WIC SUPPLEMENTAL FOOD	243,880	255,572	261,008	213,951	(47,057)
25040240 - LEAD BASED PAINT HAZZARD	24,976	4,641	4,588	-	(4,588)
<b>Total Financing by Accounting Unit</b>	<b>1,286,353</b>	<b>1,198,186</b>	<b>1,264,676</b>	<b>947,400</b>	<b>(317,276)</b>