

# Osborn Plaza Project Information



Osborn Plaza (376 Wabasha St. North), previously known as both “Ecolab Plaza” and “Capital Centre Plaza”, is an urban park in the heart of Downtown Saint Paul. It has been owned by the City since 1979 and serves as a prominent pedestrian access point for the skyway system and two privately-owned towers.

1966 “Capital Centre Plaza”



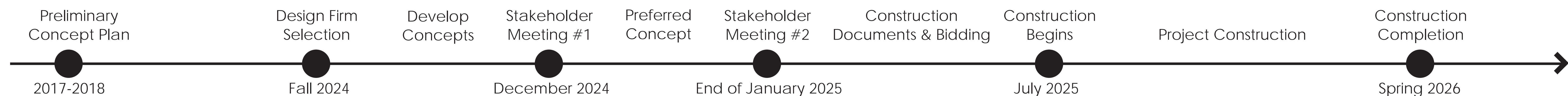
2008 “Ecolab Plaza” (plaza redeveloped in 1997)



## Why Now?

Re-investing in downtown Saint Paul, changes to surrounding land use and active deterioration of the existing park facilities have sparked the need for improvements to this space.

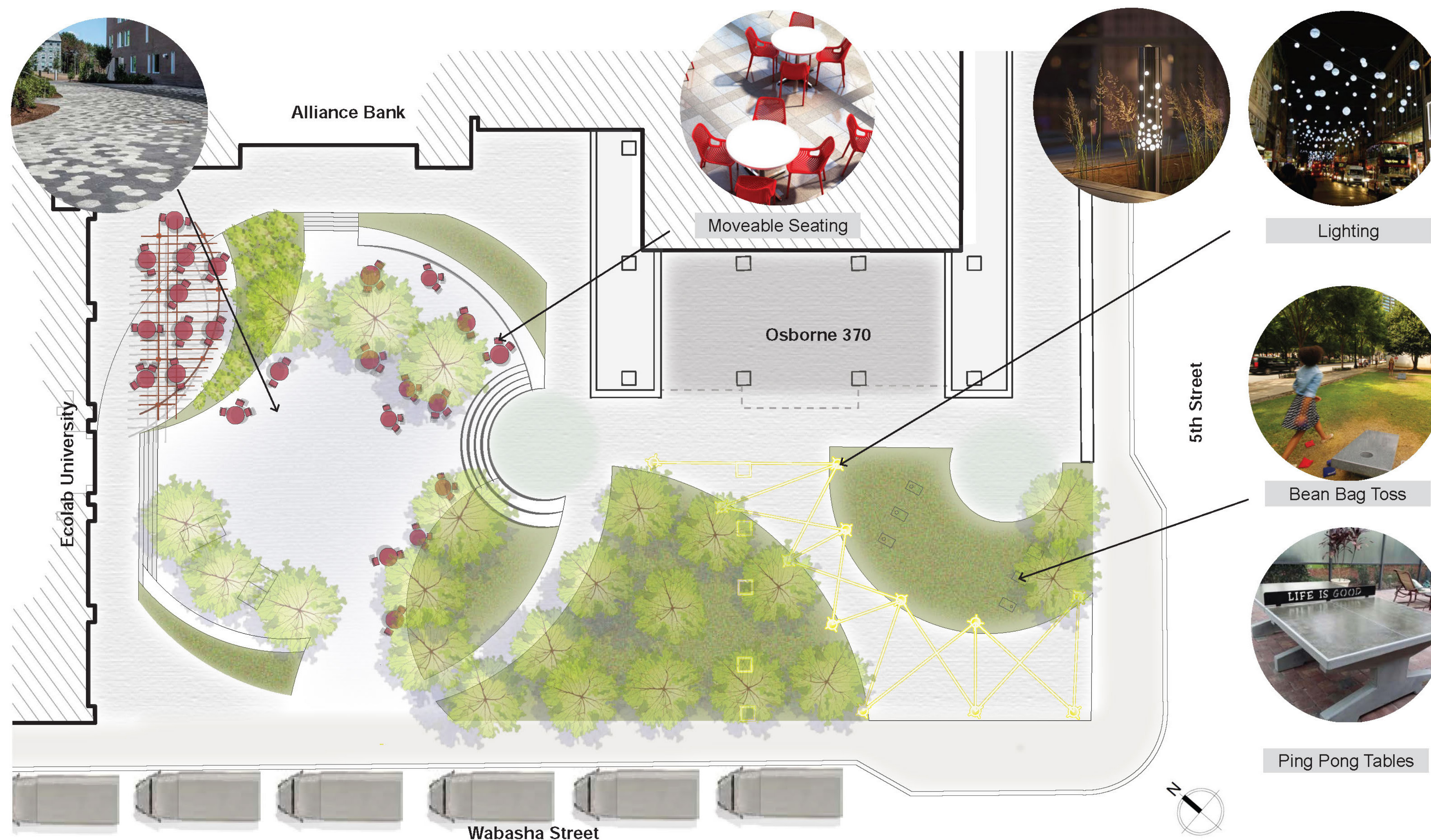
## Project Schedule



# Osborn Plaza - 2018 Preliminary Concept Plan



In 2018, with the input of an advisory committee and the public, the Department of Parks and Recreation created a preliminary concept plan for Osborn Plaza which improves the sociability, accessibility, and comfort of the plaza. The Department of Parks and Recreation now aims to refine this design, with input from stakeholders, and community engagement. This process will transform Osborn Plaza into a vibrant and active space in the downtown core.



## Key Improvement Factors

**Accessibility Improvements** - Removal of all or most steps

**Sense of Public Space** - lower portions of the plaza to sidewalk level to make more inviting/ enhance feeling of public space

**Improved Circulation** - more direct and accessible routes to access points around the site

**Shade** - Provide comfortable seating spaces with shade from trees and/or structures.

**Small Event Space** - space and infrastructure for hosting small gatherings/events. Potential food truck parking on Wabasha.

**Safety** - improve lighting and visibility through the plaza

**Public Art** - re-furbish and re-locate Skygate within the plaza

## Key Design Elements

- COLORFUL - MORE GREEN AREAS - ENCOURAGE JOBS & REDEVELOPMENT - LEISURE ACTIVITIES - MODERN - FUN
- MUSIC PERFORMANCE SPACE - MORE TREES - PLAZA AT SIDEWALK LEVEL - DOG FRIENDLY - FAMILY ACTIVITIES

# Skygate - Public Art Sculpture



Artist: Designed by R.M. Fischer and fabricated by American Structural Steel  
Date Created: 1/1/2000

The crystalline forms of Saint Paul's historic ice palaces and garden gateway structures inspired Fischer with the design for Skygate, created for the "New Millennium" project in Saint Paul. The jewel-like blue acrylic sphere, which glows blue at night, refers to the water and the sky. The combination of the sphere and the stainless steel rings represent the infinity of time and space.

## Skygate Summary:

**Maintain** - The sculpture will be preserved in its current form maintaining its original design intent.

**Re-locate** - The redevelopment of the plaza will require the temporary removal of the sculpture. The sculpture will be re-located within the plaza to improve circulation from the corner of Wabasha and 5th St and its relationship to a new urban park.

**Re-furbish** - The sculpture lighting is currently non-functional. During the re-location, the sculpture will be re-furbished to restore it to working order with improved technology and sustainability.

**Utilization** - New sculpture locations will explore various settings and the potential to utilize the piece for its shade structure like qualities.

