

# Prospect Park Site Improvements

**West Side Community Council  
Land Use Committee**

**November 20, 2024**



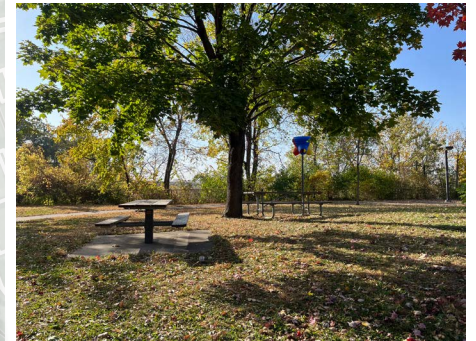
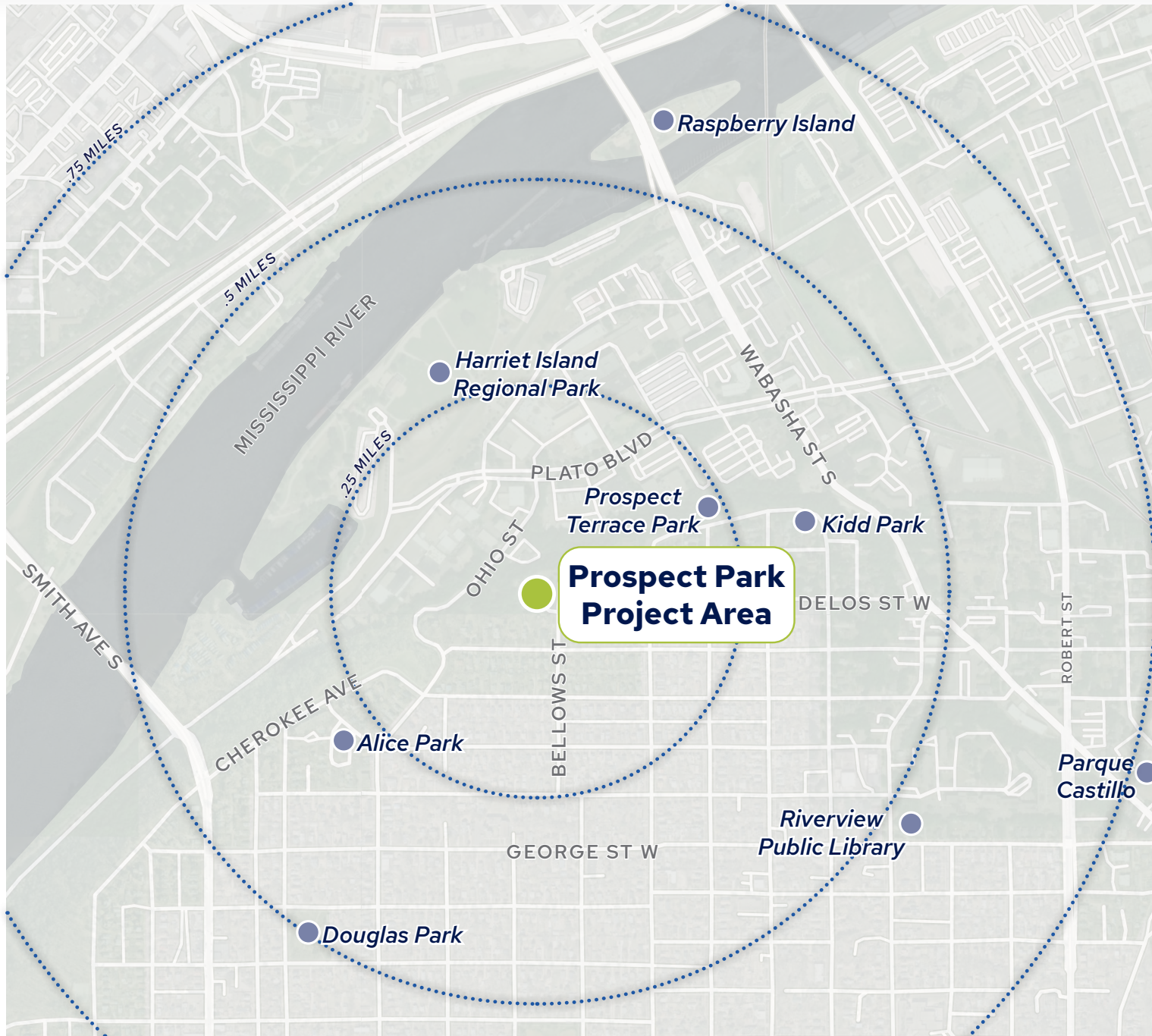
**SAINT PAUL  
MINNESOTA**

# OUTLINE

---

- ① **Project information, overview, and schedule**
- ② **Site Analysis**
- ③ **Community Engagement  
- what we've heard**
- ④ **Next Steps**

# Project Context



# Project Overview

## IMPROVEMENTS INCLUDE:

- Removal and replacement of play equipment and play area surfacing
- Upgrades to paths and accessibility
- New site furnishings
- Landscaping
- Public Art

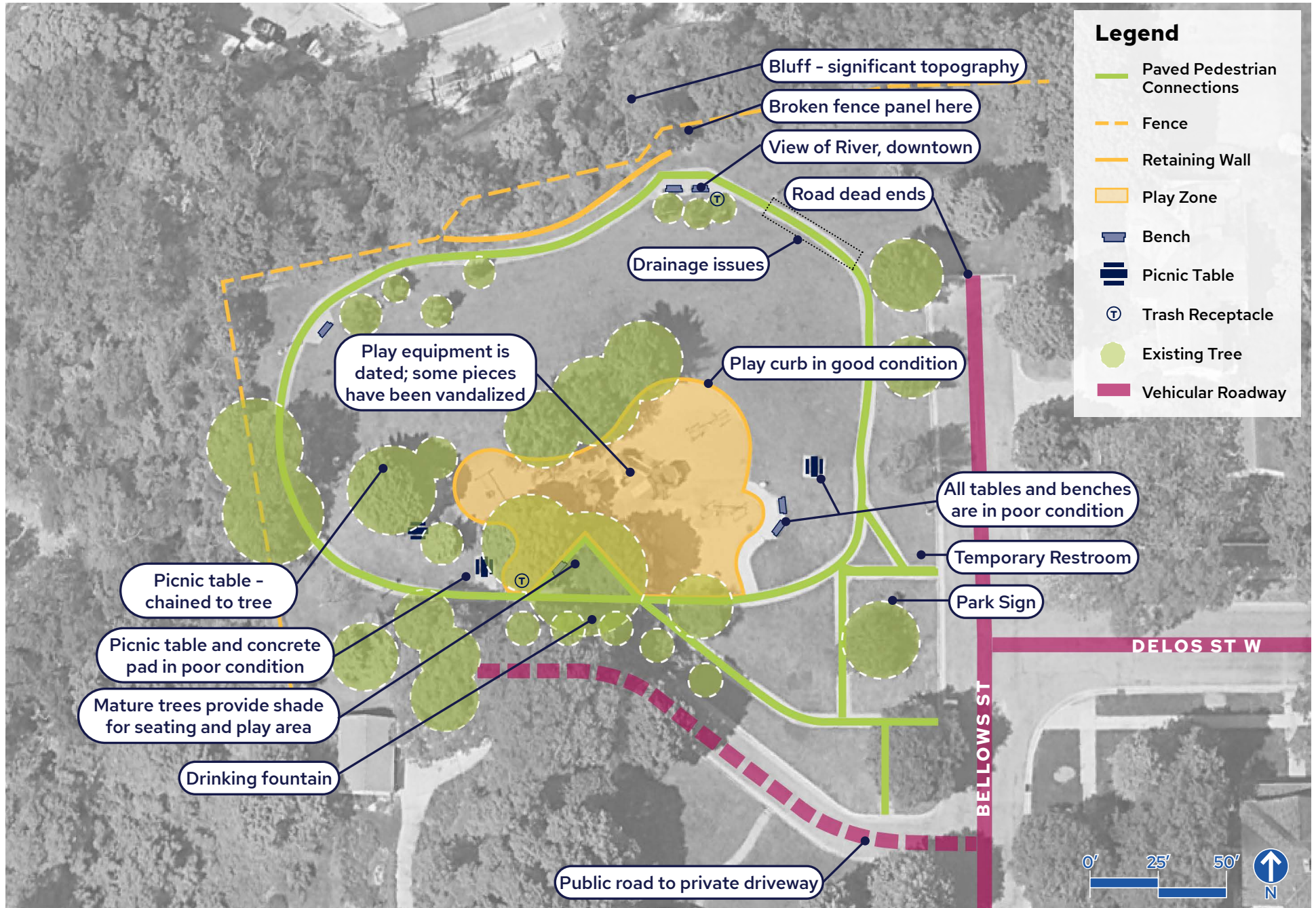
## PROJECT FUNDING:

- ~\$710,000
- CDBG (federal) and Parkland Dedication

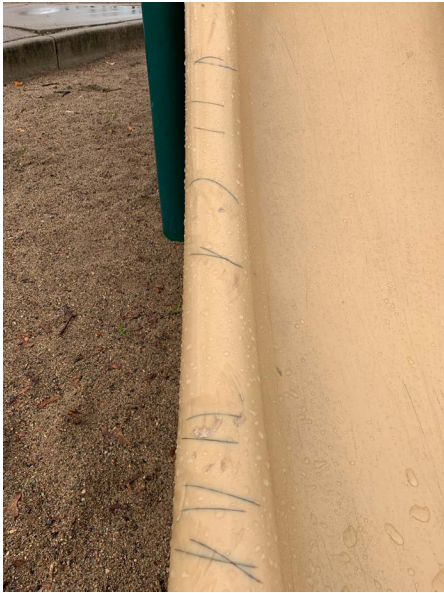
## TENTATIVE SCHEDULE

- 
- **Spring-Summer 2024**  
*Project start, site survey and archaeology survey*
  - **Fall 2024**  
*Community engagement, schematic design*
  - **Fall/Winter 2024**  
*Community engagement and design development*
  - **Winter 2025**  
*Construction documents*
  - **Spring 2025**  
*Bidding*
  - **Summer 2025**  
*Construction*
  - **Fall 2025**  
*Target opening date*

# Site Inventory and Analysis



# Site Inventory and Analysis



*Wear and tear on equipment*



*Views of downtown*



*Some pavement in poor condition; impacts from tree roots*



*Benches in poor condition*



*Mature trees provide shading for play equipment*



*Tables in poor condition*

# Community Engagement To-Date

## WSCO ANNUAL MEETING (11/3):

- Connected with community members to introduce the project, collect feedback about improvements at the park including feedback about play equipment.

## POP-UP EVENT AT PROSPECT PARK (11/6)

- Met park users at Prospect Park to collect feedback and talk to community members about how they use the space and what improvements they would like to see.
- Collected feedback about play equipment.



# Community Engagement To-Date

## BOARDS FROM ENGAGEMENT EVENTS

### Project Overview

#### PROJECT SCOPE

- New play equipment and surfacing
- Site furnishings (benches, tables, bike racks, etc.)
- Accessibility upgrades
- Landscape restoration and tree planting
- Public Art

#### CONTEXT MAP



#### SITE ANALYSIS



#### PRELIMINARY SCHEDULE

- Project Start, Community Engagement, and Schematic Design  
Fall 2024
- Community Engagement and Design Development  
Fall/Winter 2024
- Construction Documents  
Winter 2025
- Bidding  
Spring 2025
- Construction  
Summer 2025
- Target Opening Date  
Fall 2025

Check out the project website for project information and updates!



[www.stpaul.gov/play-area-projects](http://www.stpaul.gov/play-area-projects)



- Legend**
- Paved Pedestrian Connections
  - Fence
  - Retaining Wall
  - Play Zone
  - Bench
  - Picnic Table
  - Trash Receptacle
  - Existing Tree
  - Vehicular Roadway

### Play Area

#### WHICH PLAY EQUIPMENT THEME WOULD YOU LIKE TO SEE AT PROSPECT PARK?

#### Traditional

- Equipment made up of 'post and deck' elements
- Includes traditional features including slides, bridges, climbers, etc.



#### Nature Based

- Inspired by natural materials
- Green, brown, blue color palette
- Equipment relates to natural features including logs, trees, water, rocks, plants, animals, etc.



#### Sculptural/Themed

- Focus on a unique play element that may relate to the site, history, environment, or community.



SHARE YOUR THOUGHTS!

### PROSPECT PARK PLAY AREA IMPROVEMENTS FALL 2024



# Community Engagement To-Date

## ONLINE ENGAGEMENT (ONGOING):

- Project website with information, project updates, upcoming events, and key dates
- Online survey #1 available now *(survey will close 11/27)*
- Concept survey coming soon!

---

## ONLINE SURVEY #1

*(48 responses between 10/17 and 11/18)*

**98%**

Live within 1  
mile of park

**67%**

Use the park  
weekly

Top 5 favorite  
things about  
Prospect Park:

- 1 Walking loop
- 2 Close to home
- 3 Swings
- 4 Lawn and greenspace
- 5 Slides

# Community Engagement To-Date

## PLAY AREA FEEDBACK (SUMMARIZED):

Preference for nature-inspired equipment, interest in themed/sculptural features

More age diverse equipment - more equipment for toddlers, desire for 13+ equipment including fitness activities for adults

General safety upgrades - lighting, overgrown vegetation, etc.

Protect lawn and mature trees

Highlight views toward downtown and Mississippi River.

Desire for imaginative play features; natural objects like large rocks for climbing

### Play Area

#### WHICH PLAY EQUIPMENT THEME WOULD YOU LIKE TO SEE AT PROSPECT PARK?

##### Traditional

- Equipment made up of 'post and deck' elements
- Includes traditional features including slides, bridges, climbers, etc.



##### Nature Based

- Inspired by natural materials
- Green, brown, blue color palette
- Equipment relates to natural features including logs, trees, water, rocks, plants, animals, etc.



##### Sculptural/Themed

- Focus on a unique play element that may relate to the site, history, environment, or community.



SHARE YOUR THOUGHTS!

# Next Steps:

- **DESIGN DEVELOPMENT** | Staff to develop concepts based on feedback and present to community for comments and additional feedback.
- Construction documents and Site Plan Review through Winter 2024/2025.
- Construction start next summer (2025).

---

## Questions or comments?

Katie Hamerlinck, Project Manager  
katie.hamerlinck@ci.stpaul.mn.us  
651-266-6414

[www.stpaul.gov/play-area-projects](http://www.stpaul.gov/play-area-projects)

