

Linwood Recreation Center Site Improvements

August 2024

Topics:

WHERE WE'VE BEEN

- *Review previous event and community feedback*

WHERE WE ARE

- *Refined concept based on feedback*

WHERE WE'RE GOING

- *Upcoming engagement, tentative design and construction schedule*
-

Project Overview

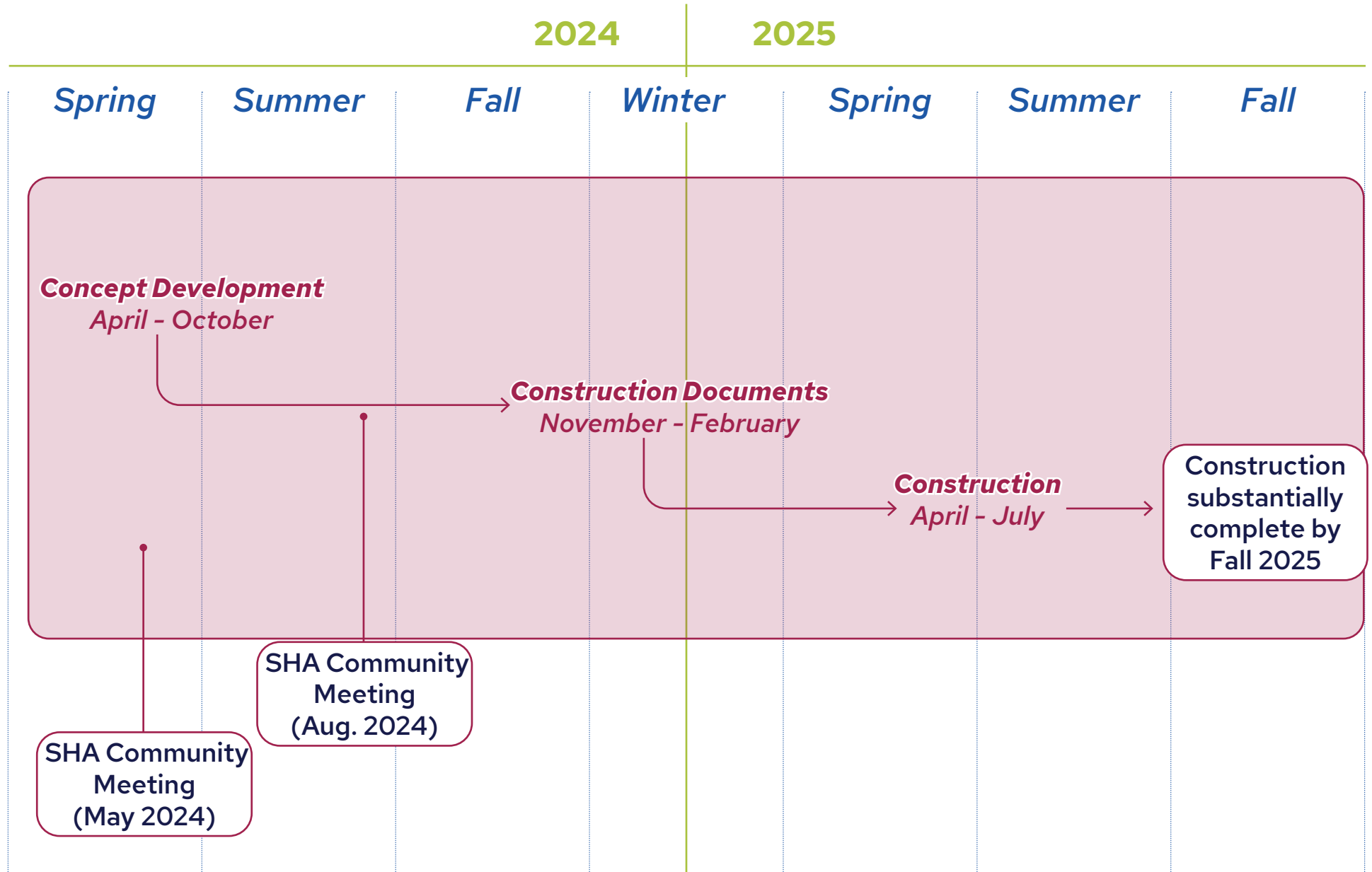
Project Goals

- » Build a new play area that is fun, accessible, and provides opportunities for learning and growth for kids of all ages and abilities.
- » Provide recreation features that meet current needs, and anticipate future needs of park users and community members.
- » Upgrade accessibility throughout the site to ensure a site that is usable by all.

Project Scope

- » New play area container, equipment, and surfacing
- » Construction of accessible ramp from sidewalk along St. Clair Ave. to play area and lower fields; site grading to improve accessibility and reduce infrastructure
- » Exploration of new recreation features including pickleball courts, a multi-use field, and an amphitheater
- » Tree planting, landscape restoration
- » Additional site furnishings including seating areas and shade

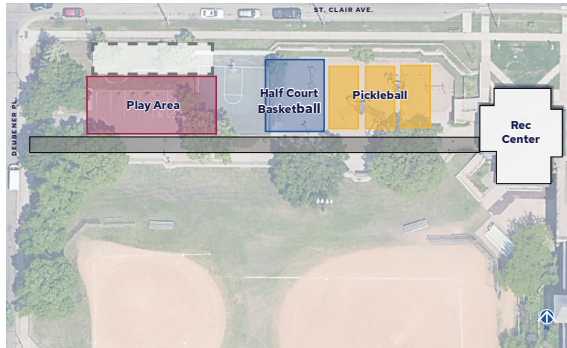
Project Overview



Community Engagement

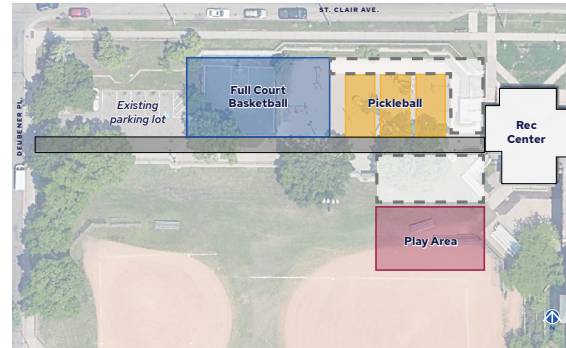
Option A

Play area moves to existing parking area (parking area is removed)



Option B

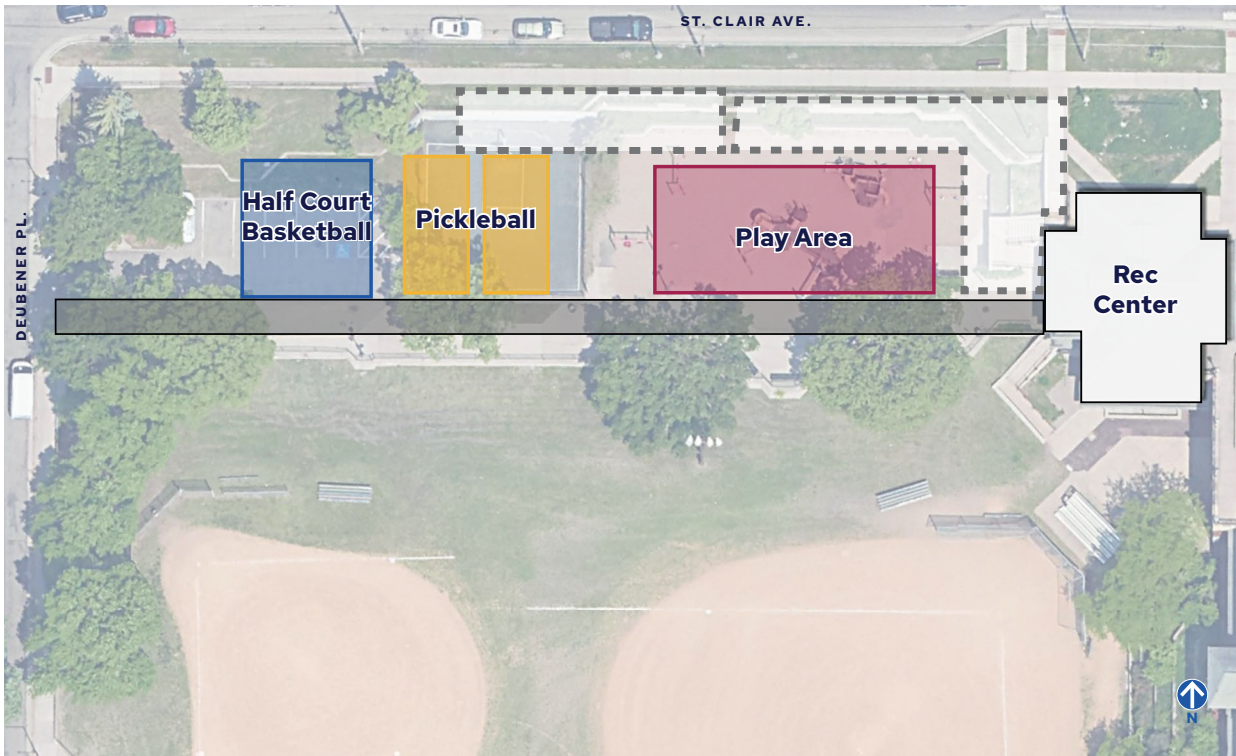
Play area moves to lower field level



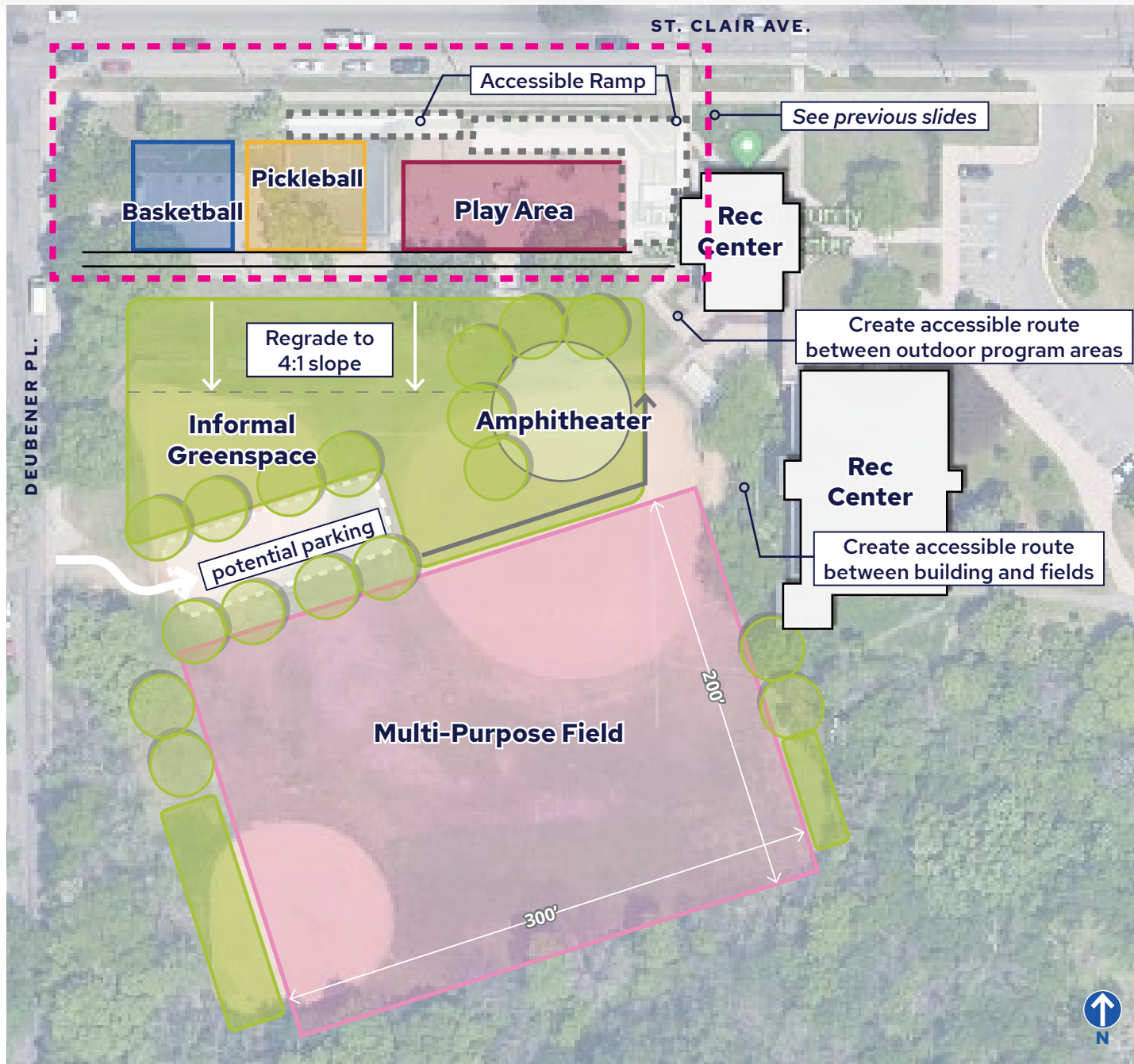
Option C

Play area remains in approximately the same location as existing

Preferred concept



Community Engagement



Community Engagement

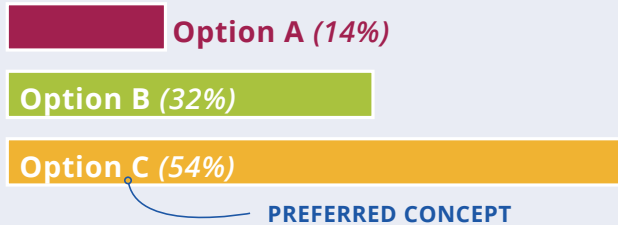
Linwood Recreation Center Site Improvements

Feedback Summary*

Spring/Summer 2024

Which option do you prefer?

See following pages to review options



Please share any feedback you have about Option A: (Summary of comments received)

- Play area is too far from the building and too close to the street (Deubener)
- Parking lot - positive comments about removal; issues with accessibility if removed
- Desire for full court basketball
- Both support and opposition for pickleball

Please share any feedback you have about Option C: (Summary of comments received)

- Preferred play area location - feels most accessible and is close to rec center
- Play area seems most prominent - other amenities seem compromised
- Both support and opposition for pickleball
- Parking lot - positive comments about removal; issues with accessibility if removed

Please share any feedback you have about Option B: (Summary of comments received)

- Most challenging option for accessibility to playground - farthest away from the sidewalk along St. Clair
- Positive comments about separation of play area and courts; play area close to open grass space
- Support for full court basketball
- Both support and opposition for pickleball
- Parking lot - positive comments about removal; issues with accessibility if removed

Please share any feedback you have about the overall site concept: (Summary of comments received)

- Overall support for amphitheater, mixed responses about location and frequency of use. Consider noise, safety, uses of this space
- Support for informal greenspace
- Support for multi-use field - more information needed about recreation opportunities
- Emphasis on need for accessibility

* Feedback was received via in-person feedback at a community meeting on 5/30/2024, on online survey between 6/3/2024 and 6/24/2024, and via direct email communication throughout June of 2024. Responses from approximately 170 participants are summarized in this document. All feedback received is valued and evaluated thoroughly.

Overall Takeaways (Analysis of comments received):

- Accessibility is a key issue
 - » **Vehicular Accessibility:** parking availability, access from St. Clair/Deubener
 - » **Pedestrian Accessibility:** accessible ramps and walkways to all parts of the site
 - » **Play Area Accessibility:** consult experts to ensure equipment is fun, safe, and accessible for kids of all ages and abilities
- General consensus that the play area should remain in approximate existing location - close to rec center, restrooms, and accessible parking
- Desire for additional shade and landscaping
- Desire for walking path throughout site
- Desire for additional amenities: splash pad or other water feature, handball, volleyball, and dog park
- Interest in utilizing existing site topography for play features
- Study options for court locations (upper terrace, lower field location)

Community Engagement

Comment

Response

Play area should be close to the building for visibility, restroom use, and ease of access for the preschool



Play area is proposed near the building and is accessible from both the sidewalk along St. Clair, and the building

Accessibility is a key issue



New accessible walkways are planned to connect St. Clair Ave. to all site programmatic features. Small parking areas will be included. Play features will be designed with inclusive features and accessible design principles

Concern about noise from court sports, specifically pickleball



Both full court basketball and 2 pickleball courts will be included in the lower field area. This will minimize noise disruption for neighbors and allow for a larger play area.

Desire for connection to east side of park - sitewide trail



A trail to connect the east and west sides of the park is being studied. Although a fully accessible trail may not be possible, an informal trail is being considered to create a sitewide walking loop

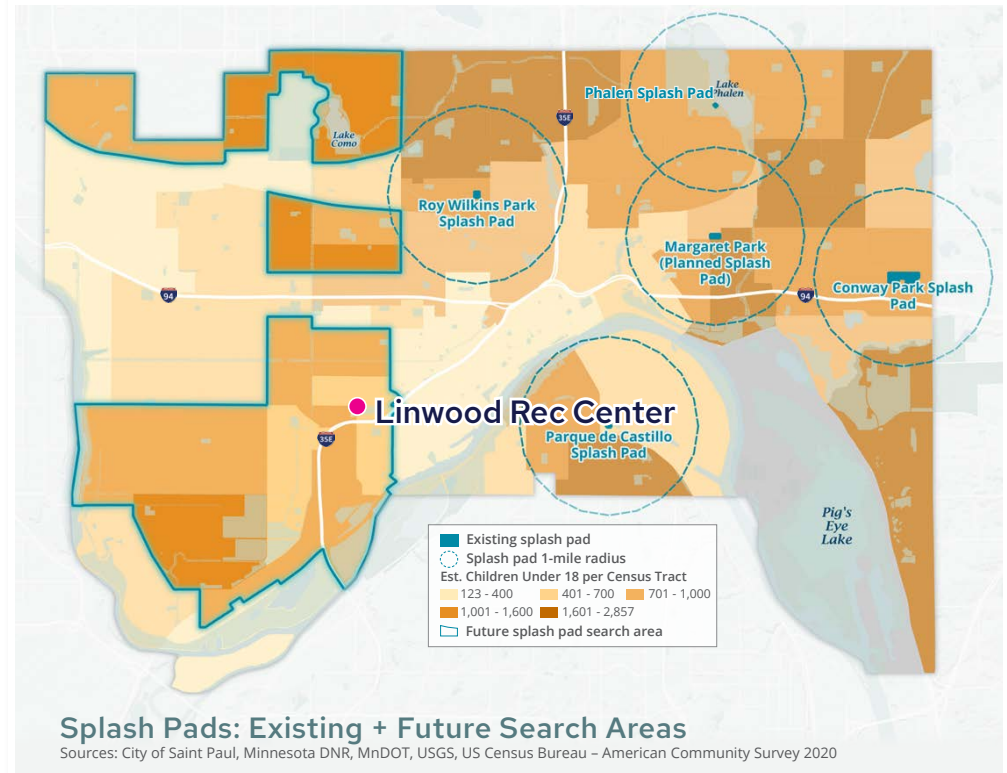
Community Engagement

Desire for splash pad



A splash pad is not planned for the Linwood site at this time. The funding available for this project is specified for deferred maintenance, play area improvements, courts, and fields. Linwood is within the splash pad search area identified in the Systems Plan. Linwood may be considered for a splash pad in future planning.

INCLUSION | SYSTEM-WIDE RECOMMENDATIONS



- Continue adding amenities that support residents amid heat island impacts—particularly splash pads, starting with the addition of a splash pad in the western areas of the city with least proximity to this free aquatic amenity.

“Free water recreation (splash pads, wading pools) would be excellent to have in more neighborhoods throughout Saint Paul.” – Survey respondent

Overall Site Plan



Legend

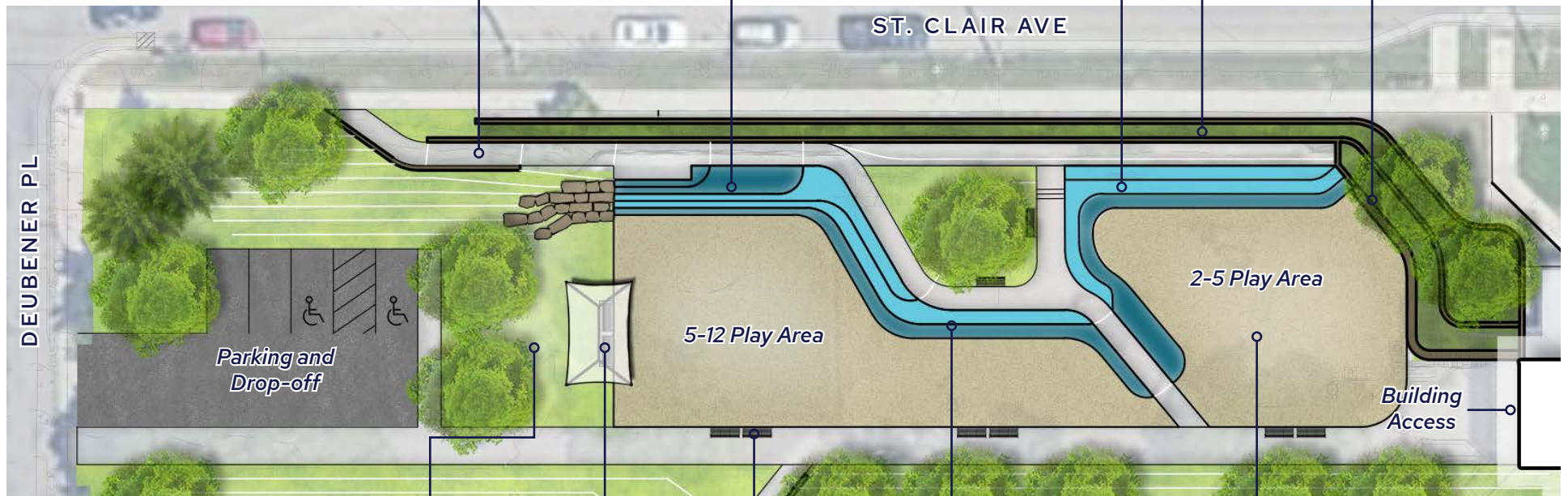
- 1 2-5 Play Area
- 2 5-12 Play Area
- 3 Pickleball Court
- 4 Full Court Basketball
- 5 Multi-use Field
- 6 Amphitheater
- 7 Greenspace
- 8 Parking Area
- 9 Walking Trail*

**Additional study required*

Site Plan Enlargement | Play Area



Key Map



Accessible walkway connecting the sidewalk along St. Clair Ave. to the play area

Topographic Play
Utilize site grading for fun, accessible play features including slides and climbers

Retaining Wall

Seat Wall

ST. CLAIR AVE

DEUBENER PL

Parking and Drop-off

5-12 Play Area

2-5 Play Area

Building Access

Greenspace
Opportunity for open lawn, pollinator garden, stormwater management

Shaded seating area

Bench (typical)

Poured in Place Resilient Surfacing

Engineered Wood Fiber Surfacing

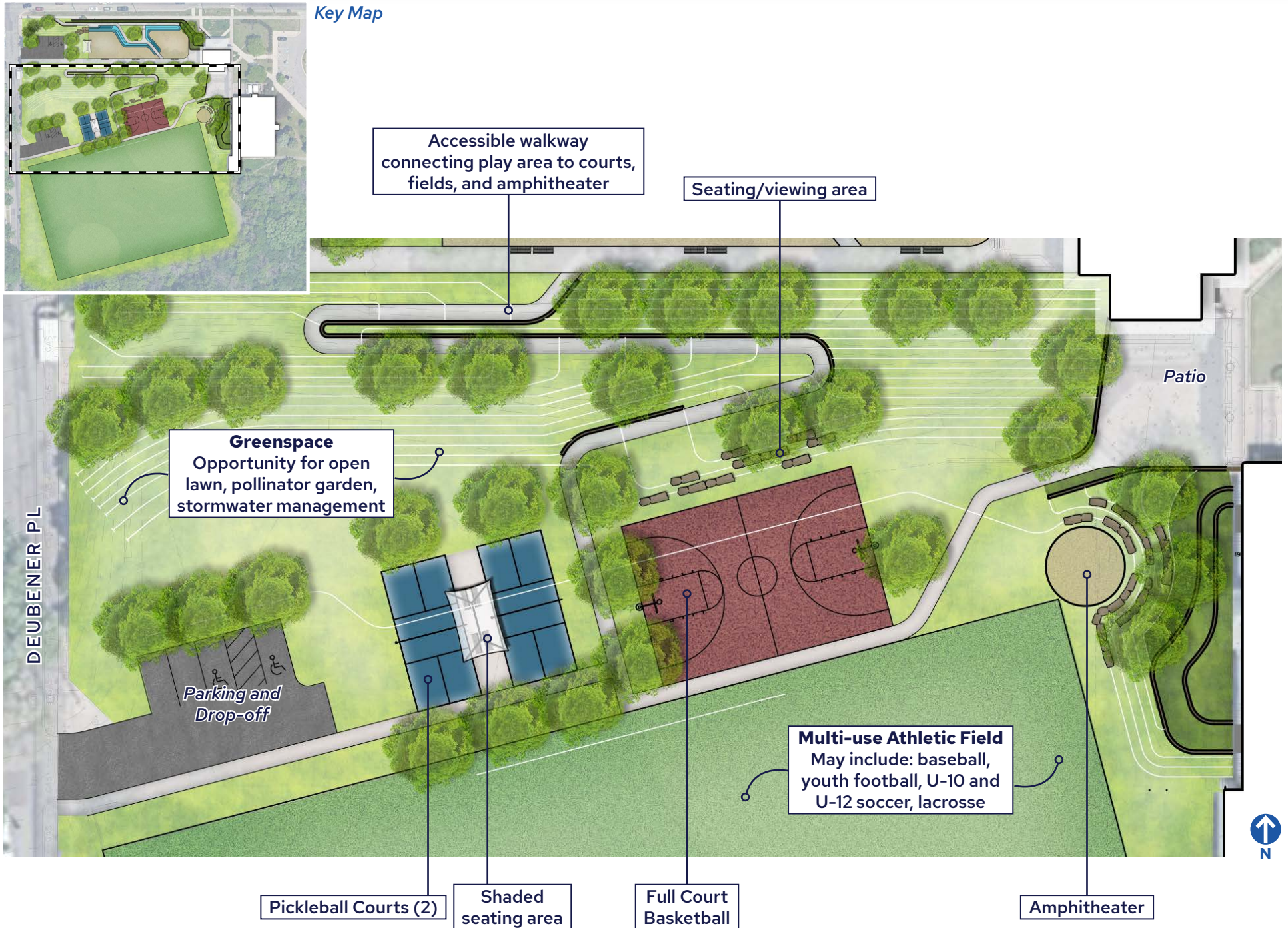


Play Area

Embankment Equipment



Site Plan Enlargement | Courts + Fields



Amphitheater



Fort Snelling
St. Paul, MN



Silverwood Park
St. Anthony, MN



Courts + Fields

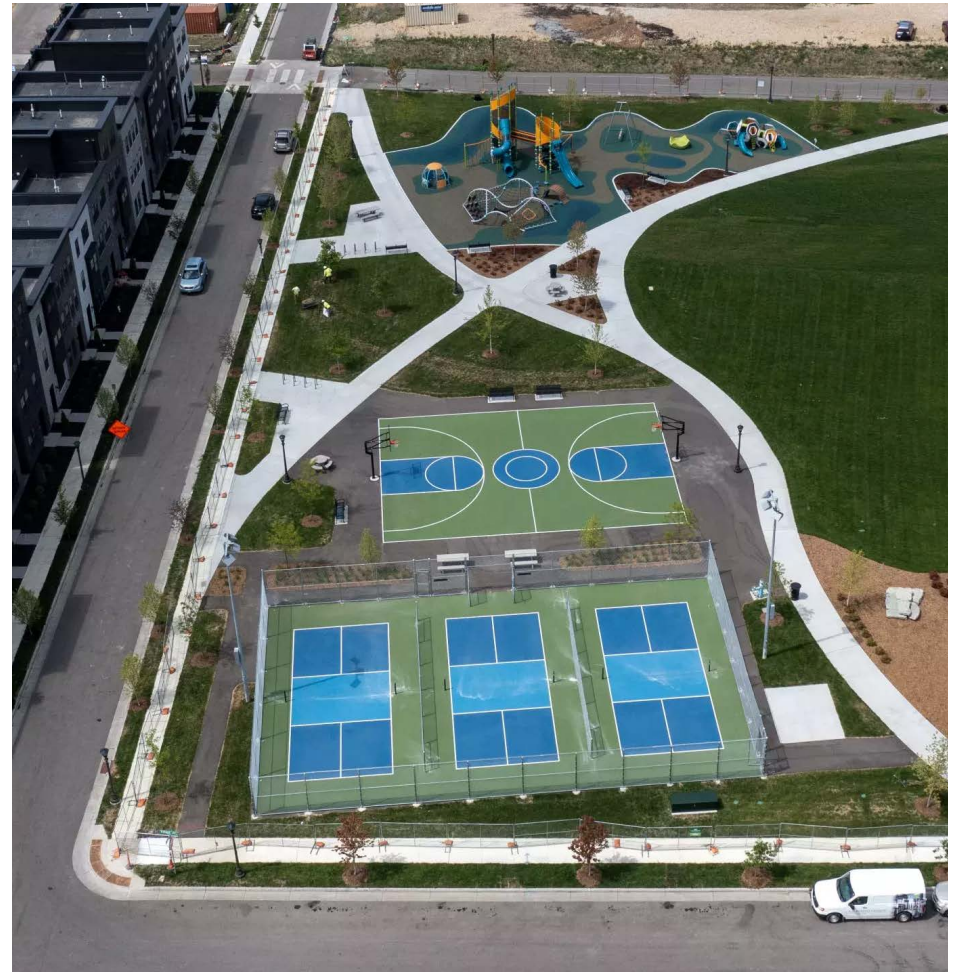
Arlington Field
Irrigated Turf Field



Arlington Hills Community Center
Irrigated Turf Field



Assembly Union Park
Full Court Basketball Court, Pickleball Courts



Next Steps:

- Refine concept for final design
- Play Area Concepts - Review equipment and color themes, accessible equipment, etc.

Stay Engaged!
Visit the project website!



Questions or comments?

Katie Hamerlinck
katie.hamerlinck@ci.stpaul.mn.us
651-266-6414