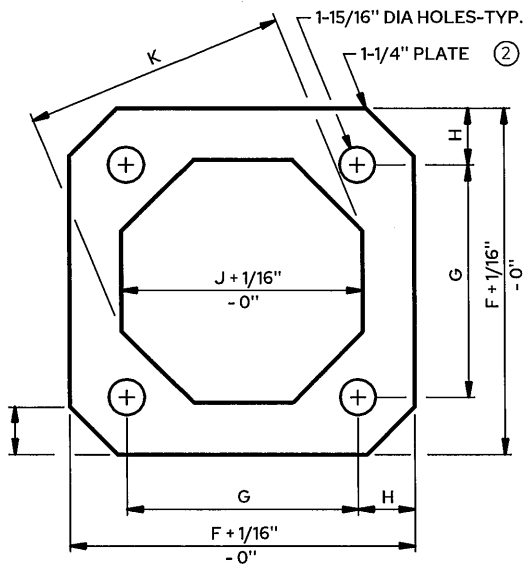
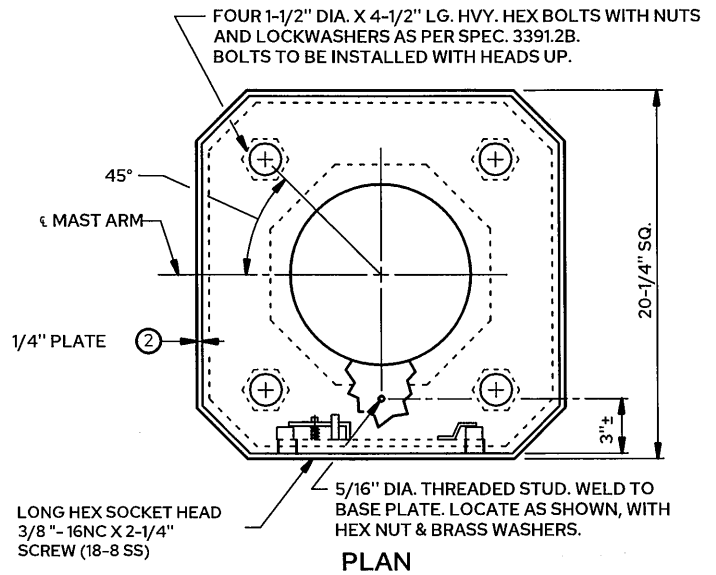
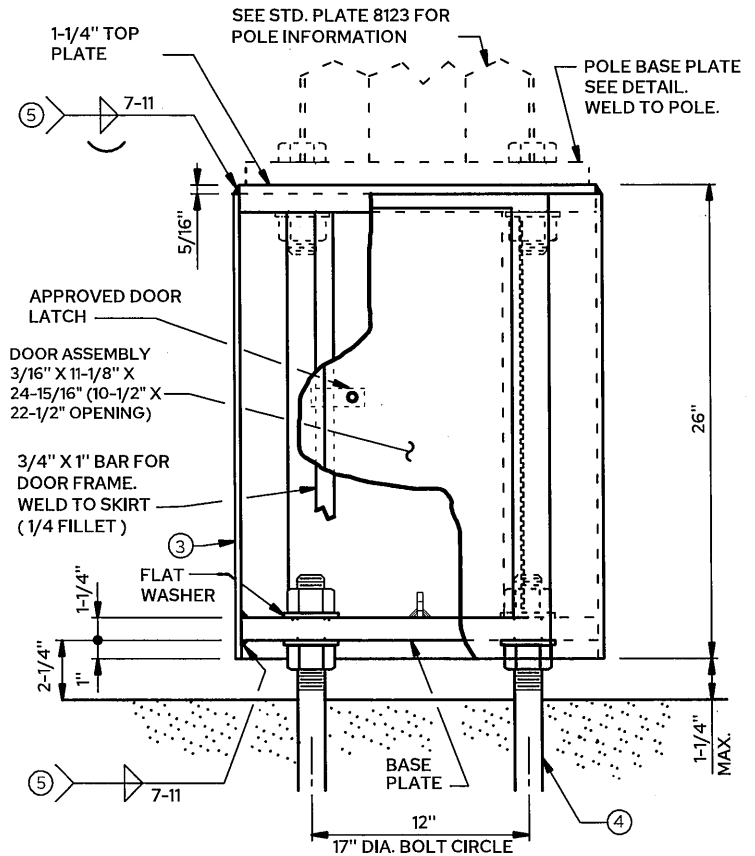


TOP & BASE PLATE DETAIL



POLE BASE PLATE DETAIL



DIMENSION	TOP PLATE ①	BASE PLATE ①	POLE BASE PLATE ②
	19-3/4"	19-3/4"	
	12-3/4"	12"	
	9-7/8"	9-7/8"	
	6-3/8"	6"	
	2-5/8"	2-5/8"	
			19"
			12-3/4"
			3-1/8"
			2-5/8"
			12-3/16"
			13-3/16"

NOTES:

ANTI-SEIZE COMPOUND THAT MEETS MIL-PRF-907E SPEC. SHALL BE APPLIED WITH A BRUSH TO ALL THREADS.
FOR SUBSTITUTION OF MATERIALS, SEE SPEC. 1605.

- ① STRUCTURAL STEEL AS PER SPEC. 3306.
- ② STRUCTURAL STEEL AS PER SPEC. 3309.
- ③ GALVANIZE TRANSFORMER BASE AS PER SPEC. 3394 AFTER FABRICATION. GALVANIZE ALL HARDWARE AS PER SPEC. 3392, EXCEPT STAINLESS STEEL AND BRASS.
- ④ SEE STANDARD PLATE 8120 FOR POLE FOUNDATION DETAILS.
- ⑤ FABRICATE STRUCTURAL METALS PER SPEC. 2471.



APPROVED

B. H. [Signature]

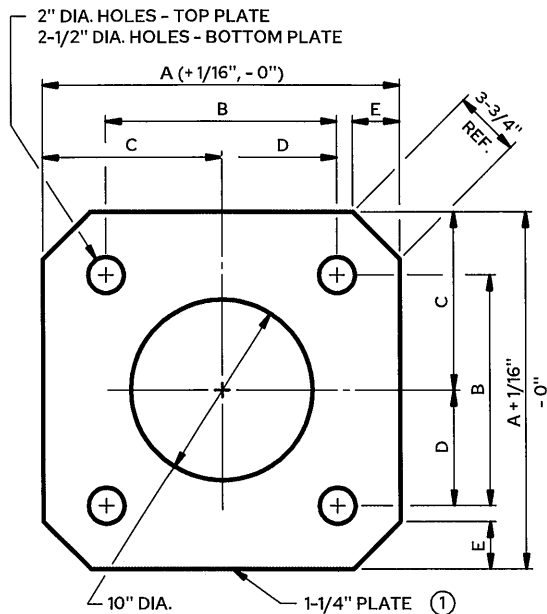
SIGNAL ENGINEER

N. [Signature]
CITY ENGINEER

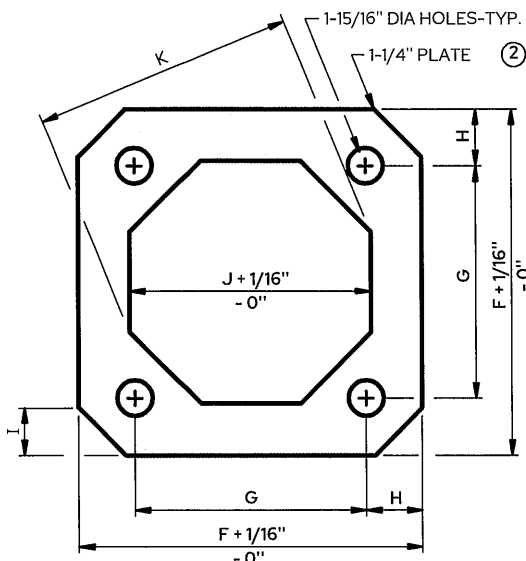
CITY OF ST. PAUL
DEPARTMENT OF PUBLIC WORKS
**TRANSFORMER BASE
AND POLE BASE PLATE**
(PA85)

Date of Revision
MAY 2024

Standard Plate No.
5121
1 OF 2

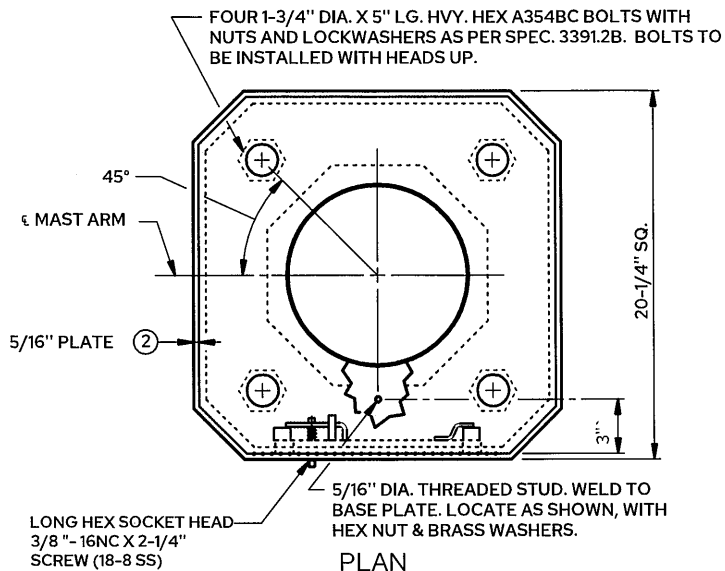


TOP & BASE PLATE DETAIL

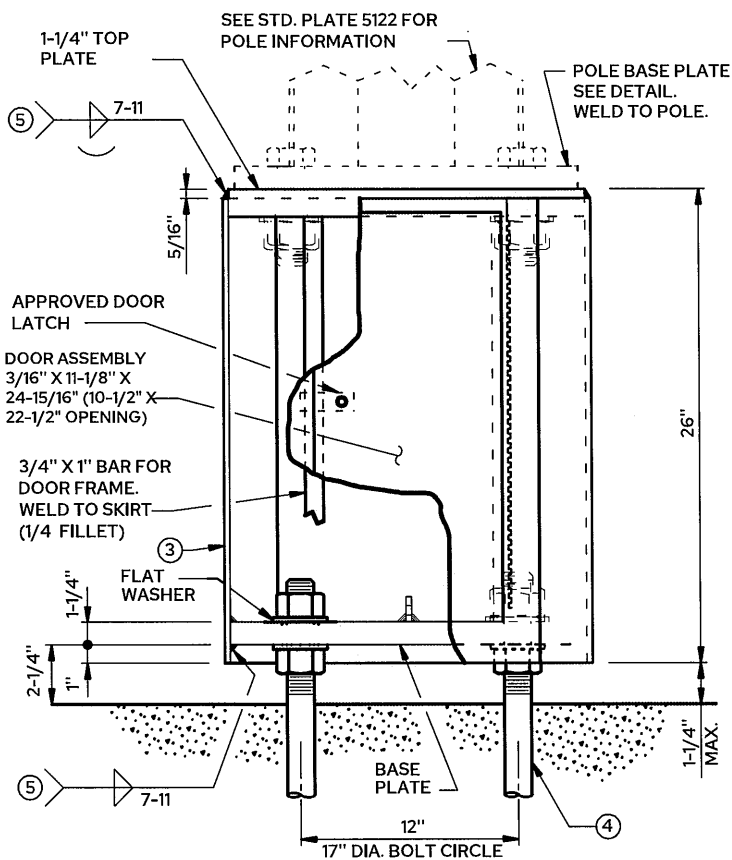


POLE BASE PLATE DETAIL

DIMENSION	TOP PLATE ①	BASE PLATE ①	POLE BASE PLATE ②
A	19-3/4"	19-3/4"	
B	12-3/4"	12"	
C	9-7/8"	9-7/8"	
D	6-3/8"	6"	
E	2-5/8"	2-5/8"	
F			19"
G			12-3/4"
H			3-1/8"
I			2-5/8"
J			13-3/16"
K			14-5/16"



PLAN



NOTES:

ANTI-SEIZE COMPOUND THAT MEETS MIL-PRF-907E SPEC. SHALL BE APPLIED WITH A BRUSH TO ALL THREADS.
FOR SUBSTITUTION OF MATERIALS, SEE SPEC. 1605.

- ① STRUCTURAL STEEL AS PER SPEC. 3306.
- ② STRUCTURAL STEEL AS PER SPEC. 3309.
- ③ GALVANIZE TRANSFORMER BASE AS PER SPEC. 3394 AFTER FABRICATION. GALVANIZE ALL HARDWARE AS PER SPEC. 3392, EXCEPT STAINLESS STEEL AND BRASS.
- ④ SEE STANDARD PLATE 5123 FOR POLE FOUNDATION DETAILS.
- ⑤ FABRICATE STRUCTURAL METALS PER SPEC. 2471.



APPROVED
B. Hall
 SIGNAL ENGINEER
N. Klockner
 CITY ENGINEER

CITY OF ST. PAUL
 DEPARTMENT OF PUBLIC WORKS
**TRANSFORMER BASE
 AND POLE BASE PLATE**
 (PA90 and PA100)

Date of Revision	Standard Plate No.
MAY 2024	5121
	2 OF 2