



7

**MSU RAMP PROJECT**

METROPOLITAN STATE UNIVERSITY  
ST. PAUL, MN

DESIGN DEVELOPMENT RENDERING  
View From Corner of East 7th Street & Maria Avenue

FEBRUARY 4, 2014

**miller dunwiddie**  
ARCHITECTURE



Kirby-Horn  
and Associates, Inc.





8

**MSU RAMP PROJECT**

METROPOLITAN STATE UNIVERSITY  
ST. PAUL, MN

DESIGN DEVELOPMENT RENDERING  
View From Corner of East 6th Street & Maria Avenue

FEBRUARY 4, 2014

**miller dunwiddie**  
ARCHITECTURE



Kenney-Horn  
and Associates, Inc.





9

**MSU RAMP PROJECT**

METROPOLITAN STATE UNIVERSITY  
ST. PAUL, MN

DESIGN DEVELOPMENT RENDERING  
View From Corner of East 6th Street & Bates Avenue - Alternate

FEBRUARY 4, 2014

**miller dunwidie**  
ARCHITECTURE



Kenney-Horn  
and Associates, Inc.





**MSU RAMP PROJECT**

METROPOLITAN STATE UNIVERSITY  
ST. PAUL, MN

DESIGN DEVELOPMENT RENDERING  
View From Corner of East 7th Street & Bates Avenue

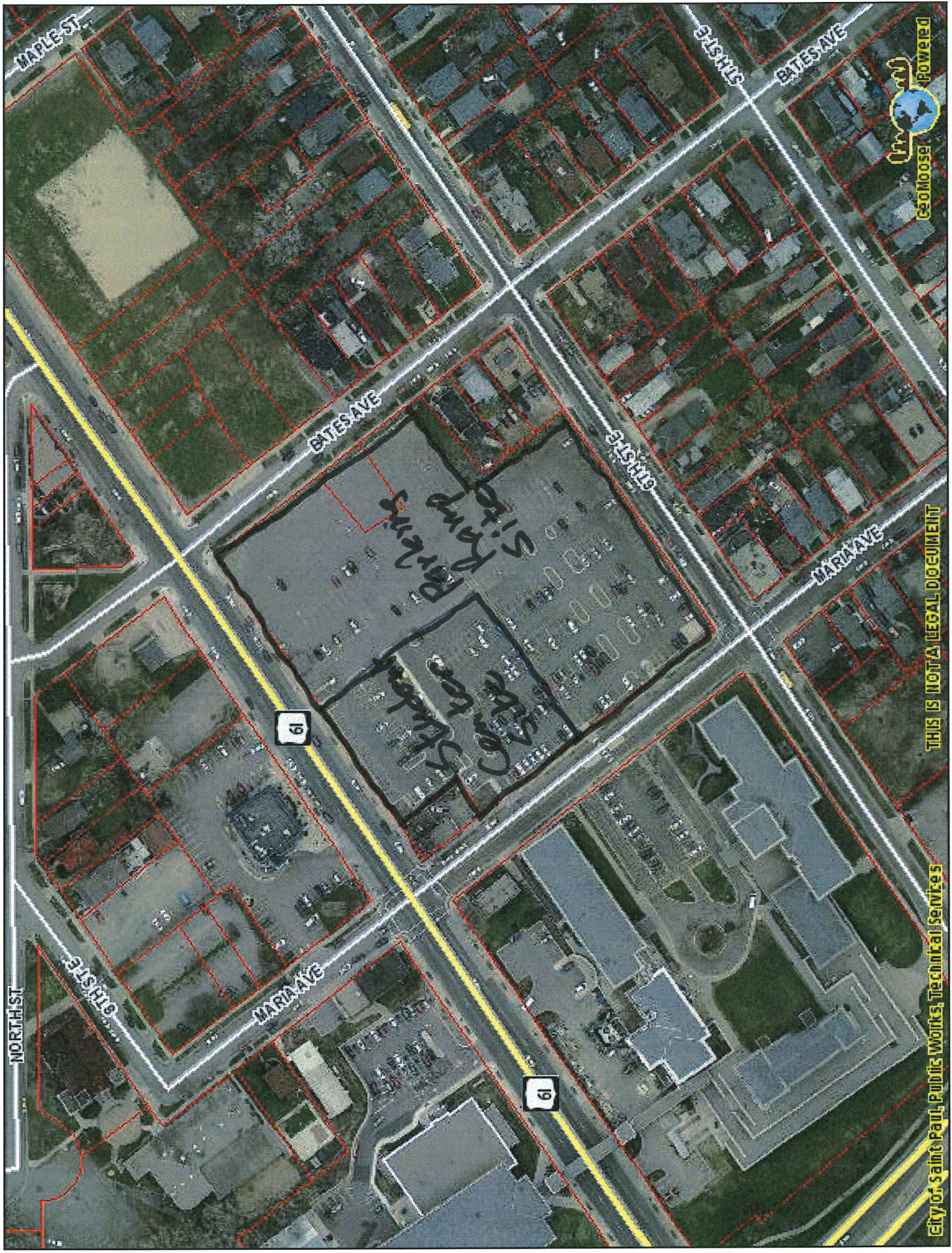
FEBRUARY 4, 2014

**miller dunwidie**  
ARCHITECTURE



Kenny-Horn  
and Associates, Inc.





MAPLE ST

BATES AVE

BATES AVE

BATES AVE

BATES AVE

MARIA AVE

NORTH ST

OUTSIDE

MARIA AVE

61

61

Student Center  
Parking



THIS IS NOT A LEGAL DOCUMENT

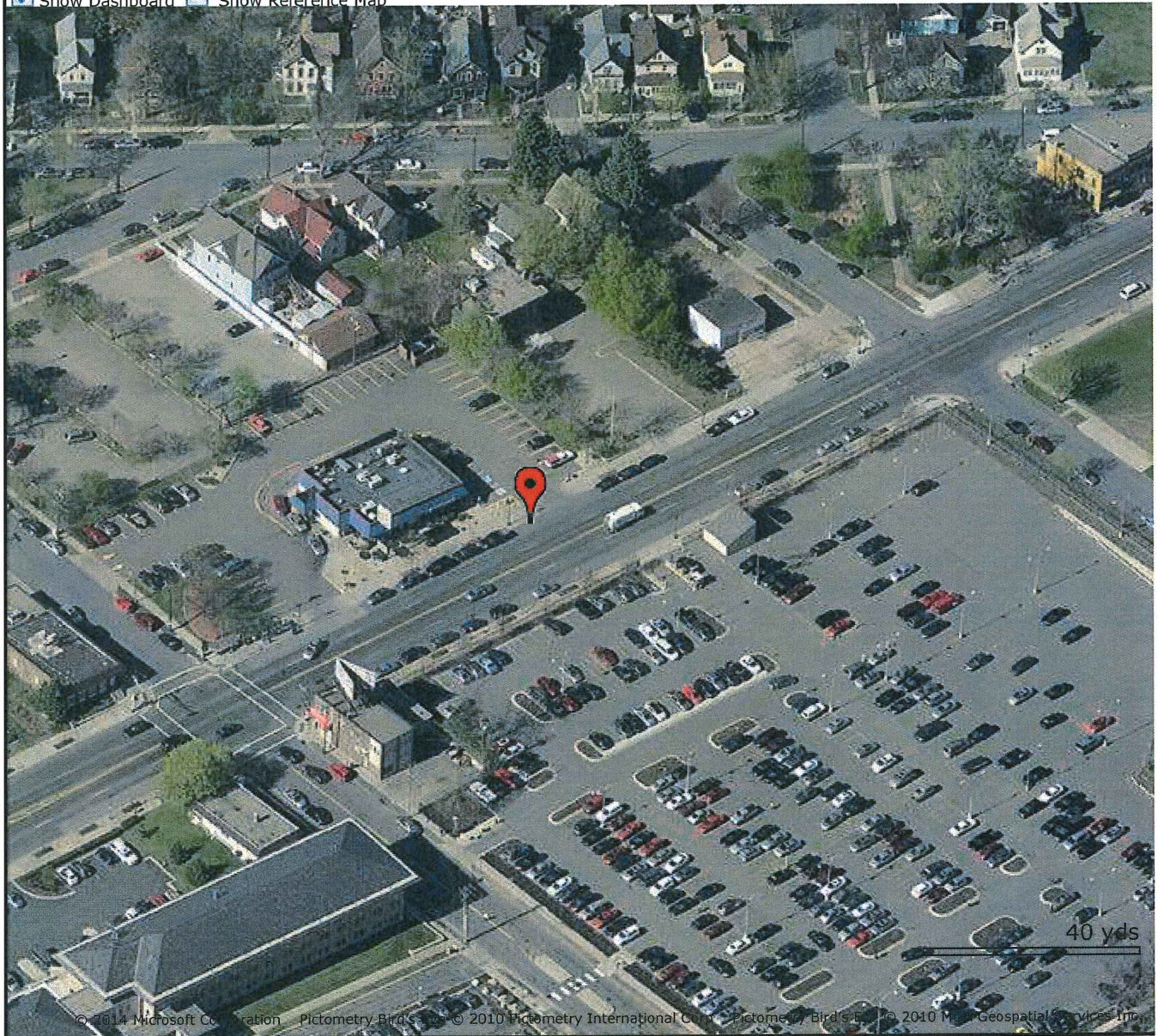
City of Saint Paul, Public Works, Technical Services



# GISmo Oblique Photography

Images courtesy of: Microsoft® Virtual Earth™ 2006

Show Dashboard  Show Reference Map



Looking  
North

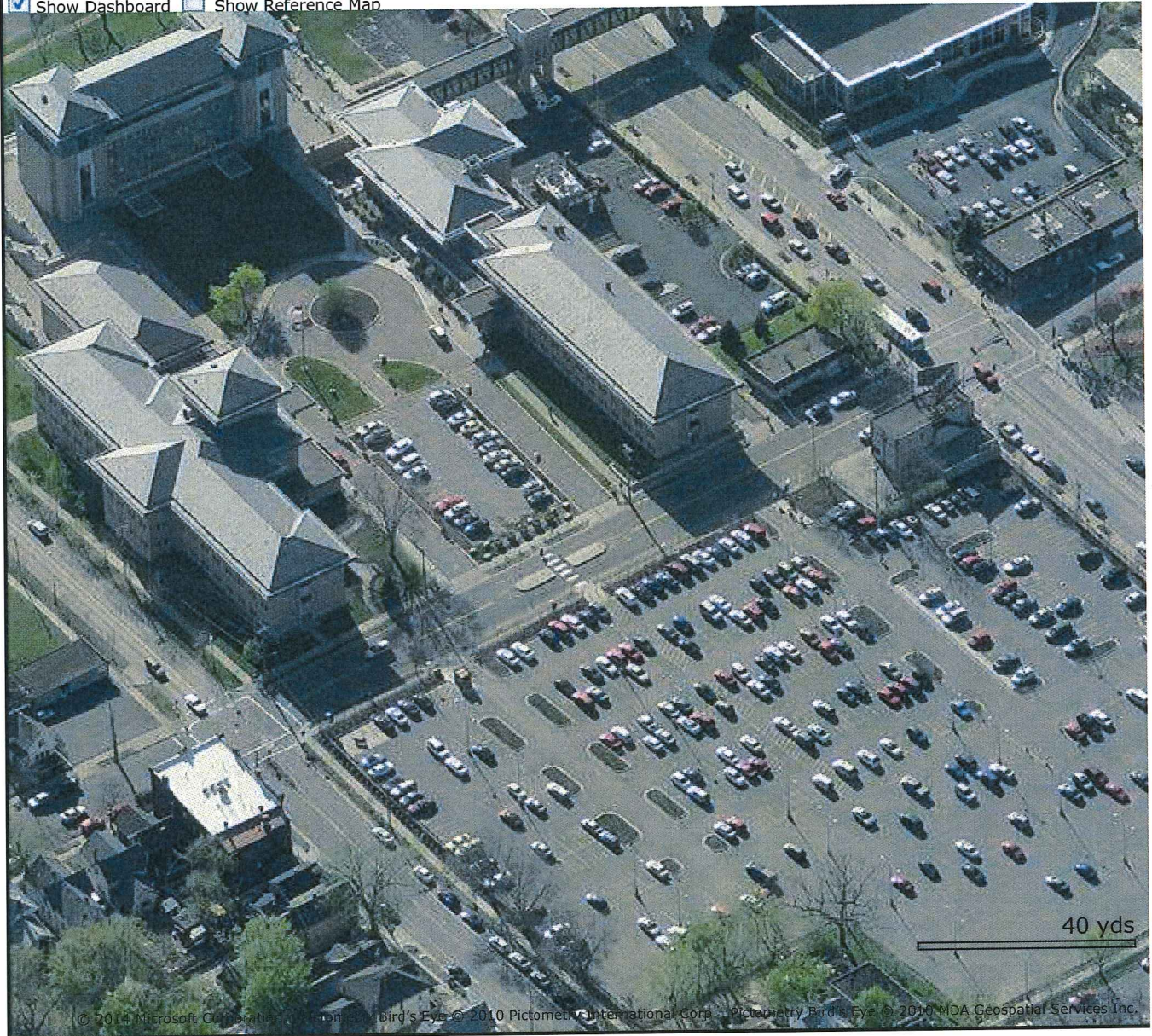
12



# GISmo Oblique Photography

Images courtesy of: Microsoft® Virtual Earth™ 2006

Show Dashboard  Show Reference Map



Looking  
West

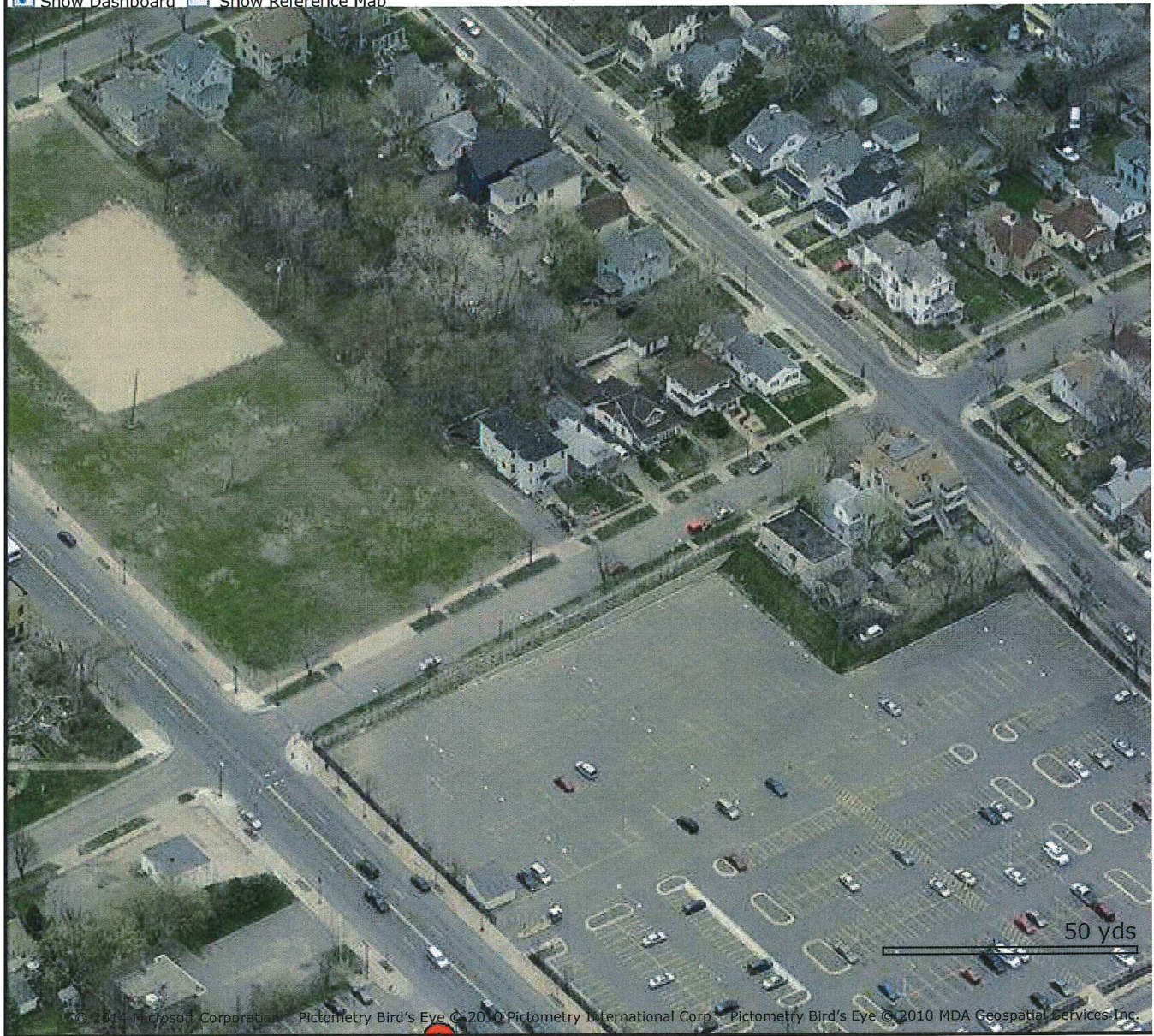
13



# GISmo Oblique Photography

Images courtesy of: Microsoft® Virtual Earth™ 2006

Show Dashboard  Show Reference Map



Looking  
East

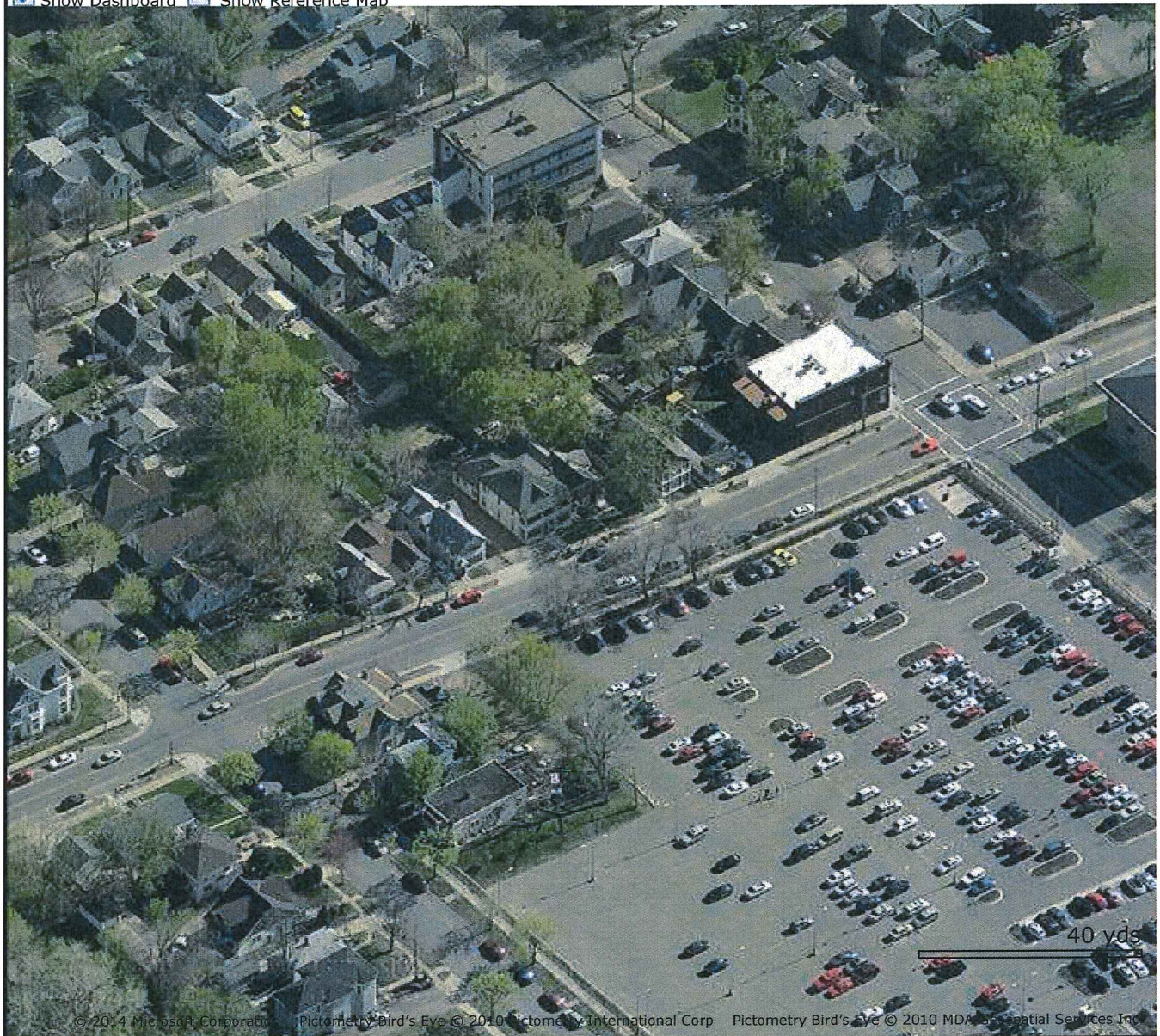
14



# GISmo Oblique Photography

Images courtesy of: Microsoft® Virtual Earth™ 2006

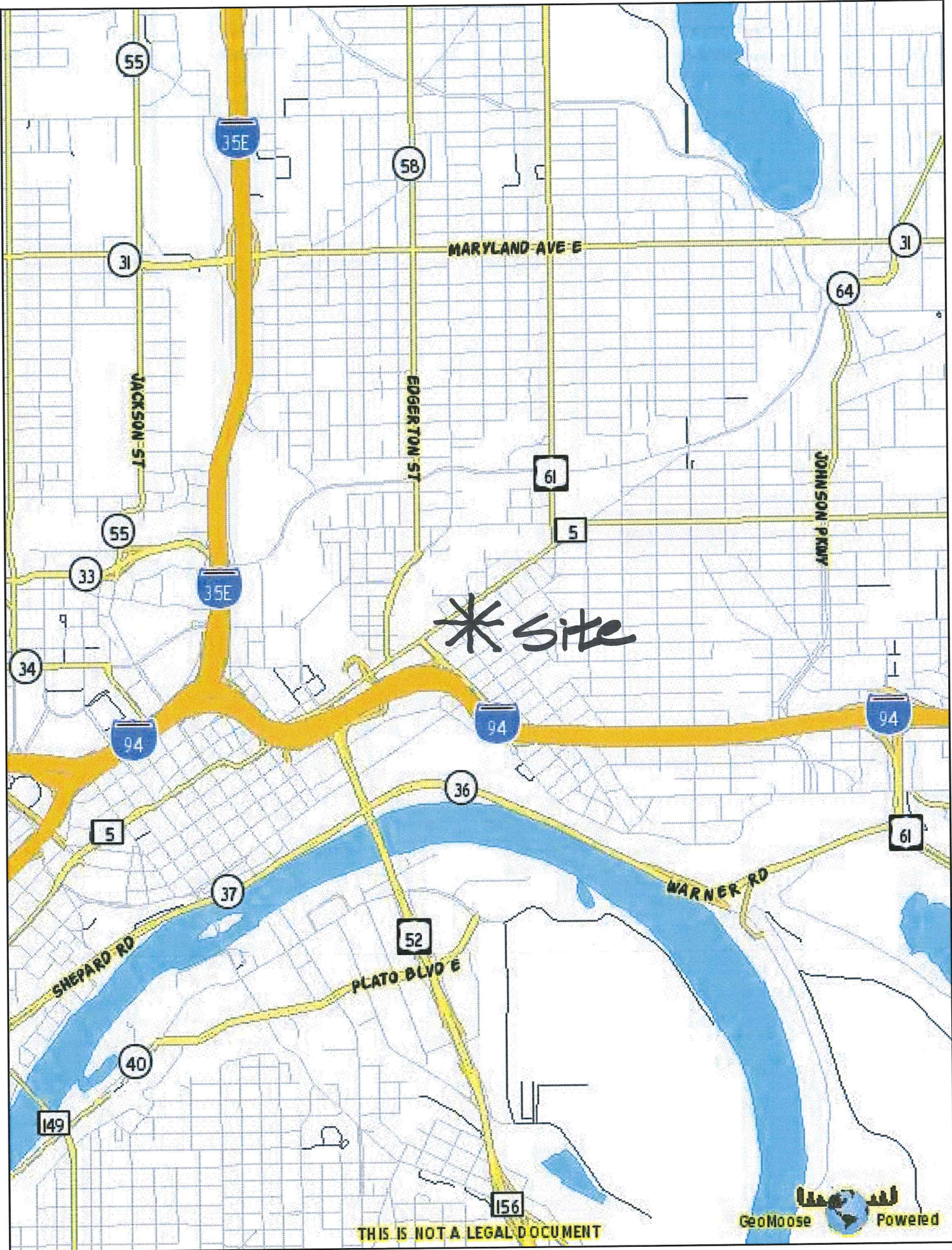
Show Dashboard  Show Reference Map



Looking  
South

15





\* site

THIS IS NOT A LEGAL DOCUMENT

