





Map adapted from USGS 7.5 minute topographic map(s): St. Paul East, MN; T 29N, R 22W, Section 32

**Legend**

-  APE for Direct Effects
-  APE for Visual Effects


 Site Location

0 2,000 Feet  
1 inch = 2,000 feet



**PROJECT LOCATION**

Diamond Products Site Assessment  
St. Paul, Ramsey County, Minnesota

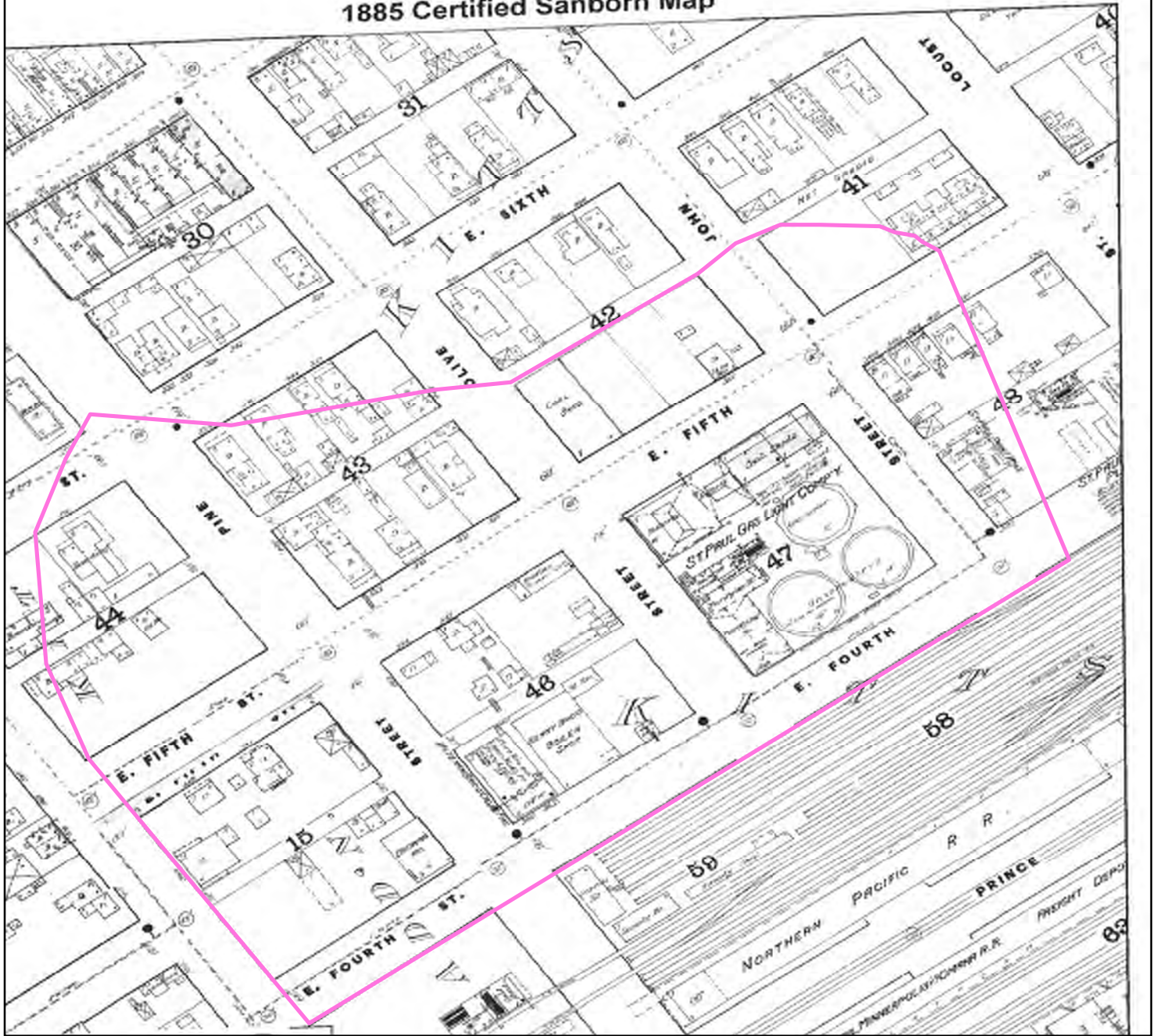


**Figure 1**

File: Fig1\_Project\_Location  
Summit Proj. No.: 1686-0002  
Plot Date: 06-10-11  
Arc Operator: THV  
Reviewed by: RLH




# 1885 Certified Sanborn Map



Map adapted from Sanborn Fire Insurance Map; St. Paul, Ramsey County, Minnesota.

## Legend

 APE for Direct Effects



0 140 Feet  
1 inch = 140 feet



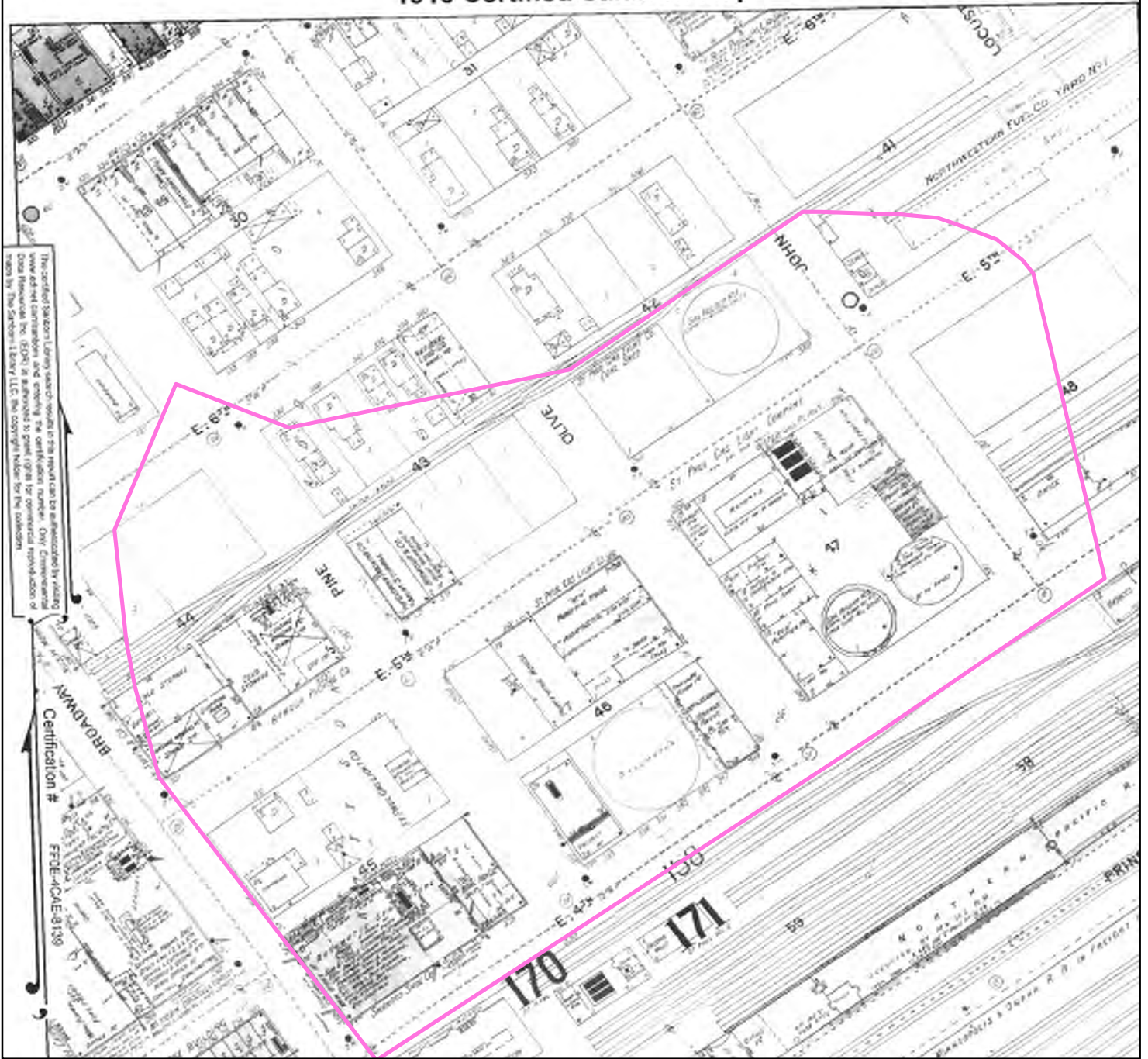
1885 Sanborn Map  
Diamond Products Site Assessment  
St. Paul, Ramsey County, Minnesota



## Figure 2

File: Sanborn.mxd  
Summit Proj. No.: 1686-0002  
Plot Date: 07-05-11  
Arc Operator: JCJ  
Reviewed by: LSHO

# 1910 Certified Sanborn Map



The certified Sanborn Library search results in this report can be substantiated by visiting the Sanborn Library website and entering the street name. Only Comprehensive Digital Reproductions (CDR) is approved as a print holder for the exhibition.

Map adapted from Sanborn Fire Insurance Map; St. Paul, Ramsey County, Minnesota.

## Legend

APE for Direct Effects



0 140 Feet  
1 inch = 140 feet



1910 Sanborn Map  
Diamond Products Site Assessment  
St. Paul, Ramsey County, Minnesota



## Figure 3

File: Sanborn.mxd  
Summit Proj. No.: 1686-0002  
Plot Date: 07-05-11  
Arc Operator: JCJ  
Reviewed by: LSHO