

Proposed
Site
100' x 100' Lot

	Proposed Site
	Existing Site

	Proposed Site
	Existing Site



Scale: 1" = 100'



City of Mirna
Planning Department
1000 Main Street
Mirna, CA 94569



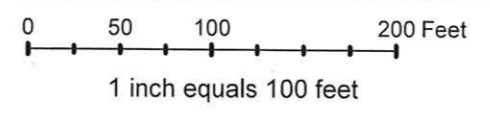
Legend
 — Ford Property Boundary

G:\GIS\Projects\Ford Ranger\ArcMap\Ballfields\BField_loc_map_20071206.mxd - 12/16/2007 @ 9:22:56 AM

Project Manager E. Carman	Assistant Project Manager B. Zinda
Drawn M. Gress	Checked A. Fiskness



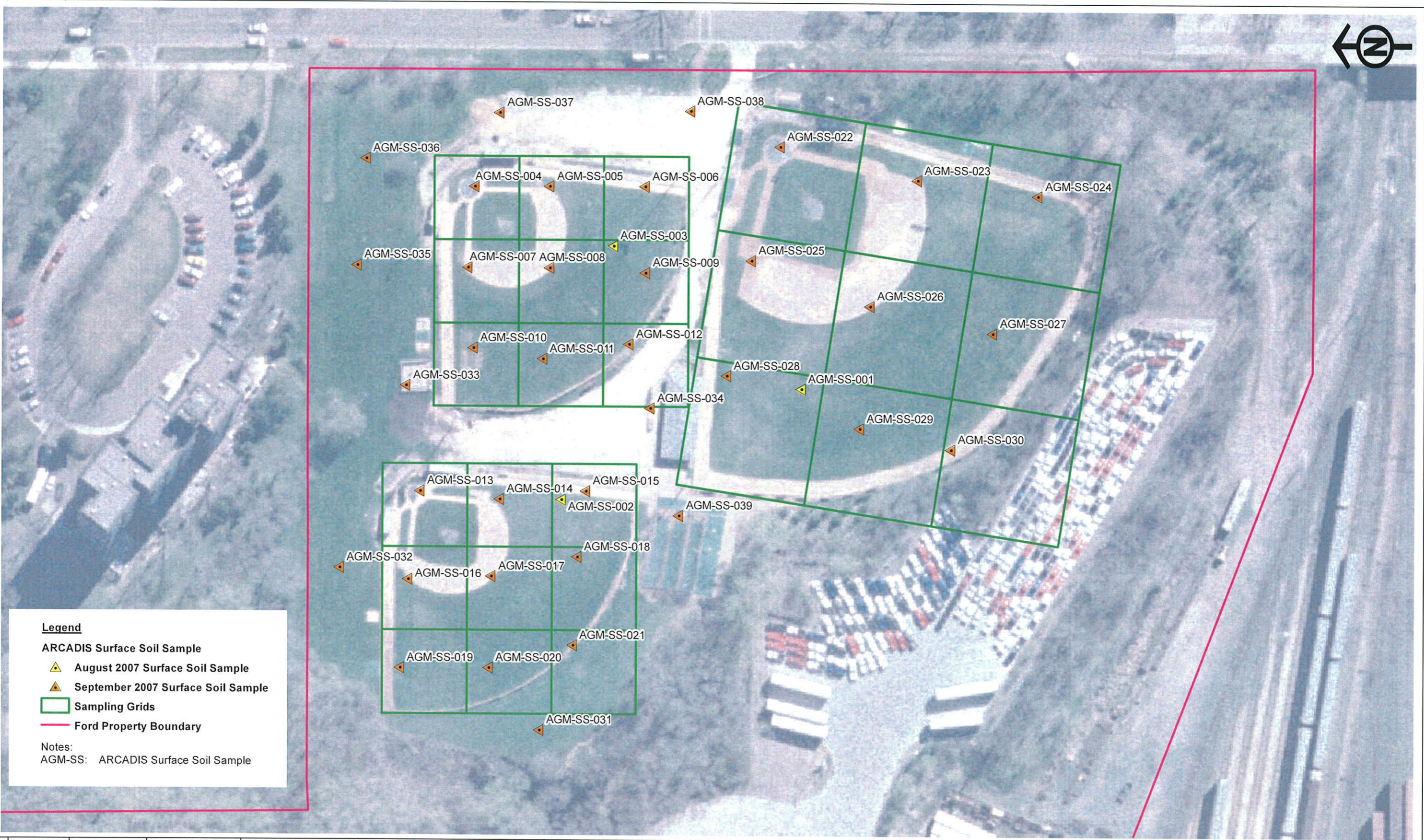
Imagery Source: USGS High Resolution Orthoimagery for the Minneapolis-St. Paul, Minnesota Urban Area



ARCADIS
 430 First Avenue North, Suite 720
 Minneapolis, Minnesota 55401
 Tel: (612) 339-9434 Fax: (612) 336-4538

Baseball Field Area (Feature 139) Location Map
Twin Cities Assembly Plant
St. Paul, Minnesota

Project Number MN000593
Date 25-OCT-07
Figure 2



Legend

ARCADIS Surface Soil Sample

▲ August 2007 Surface Soil Sample

▲ September 2007 Surface Soil Sample

□ Sampling Grids

— Ford Property Boundary

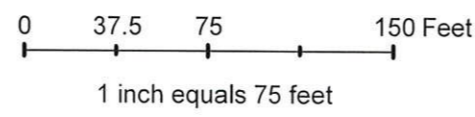
Notes:
AGM-SS: ARCADIS Surface Soil Sample

G:\GIS\Projects\Ford Ranger\ArcMap\Ballfields\BField_pSS_SGrid_20071127.mxd - 12/13/2007 @ 10:45:38 AM

Project Manager E. Carman	Assistant Project Manager B. Zinda
Drawn M. Gress	Checked A. Fiskness



Imagery Source: USGS High Resolution Orthoimagery for the Minneapolis-St. Paul, Minnesota Urban Area



**Surface Soil Sampling Locations
Twin Cities Assembly Plant
St. Paul, Minnesota**

Project Number MND00593
Date 25-Nov-07
Figure 3



Legend

- Ford Property Boundary
- Sampling Grid

ARCADIS Soil Boring

- July 2007 Soil Boring
- September 2007 Soil Boring
- September 2007 Soil Boring with Temporary Monitoring Well (Perched Groundwater)

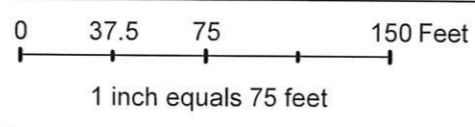
Notes:
ASB: ARCADIS Soil Boring

G:\GIS\Projects\Ford Ranger\ArcMap\Ballfields\BField_LGrid_Locs_20071127.mxd - 12/13/2007 @ 10:48:45 AM

Project Manager E. Carman	Assistant Project Manager B. Zinda
Drawn M. Gress	Checked T. Nelson-Kalmes



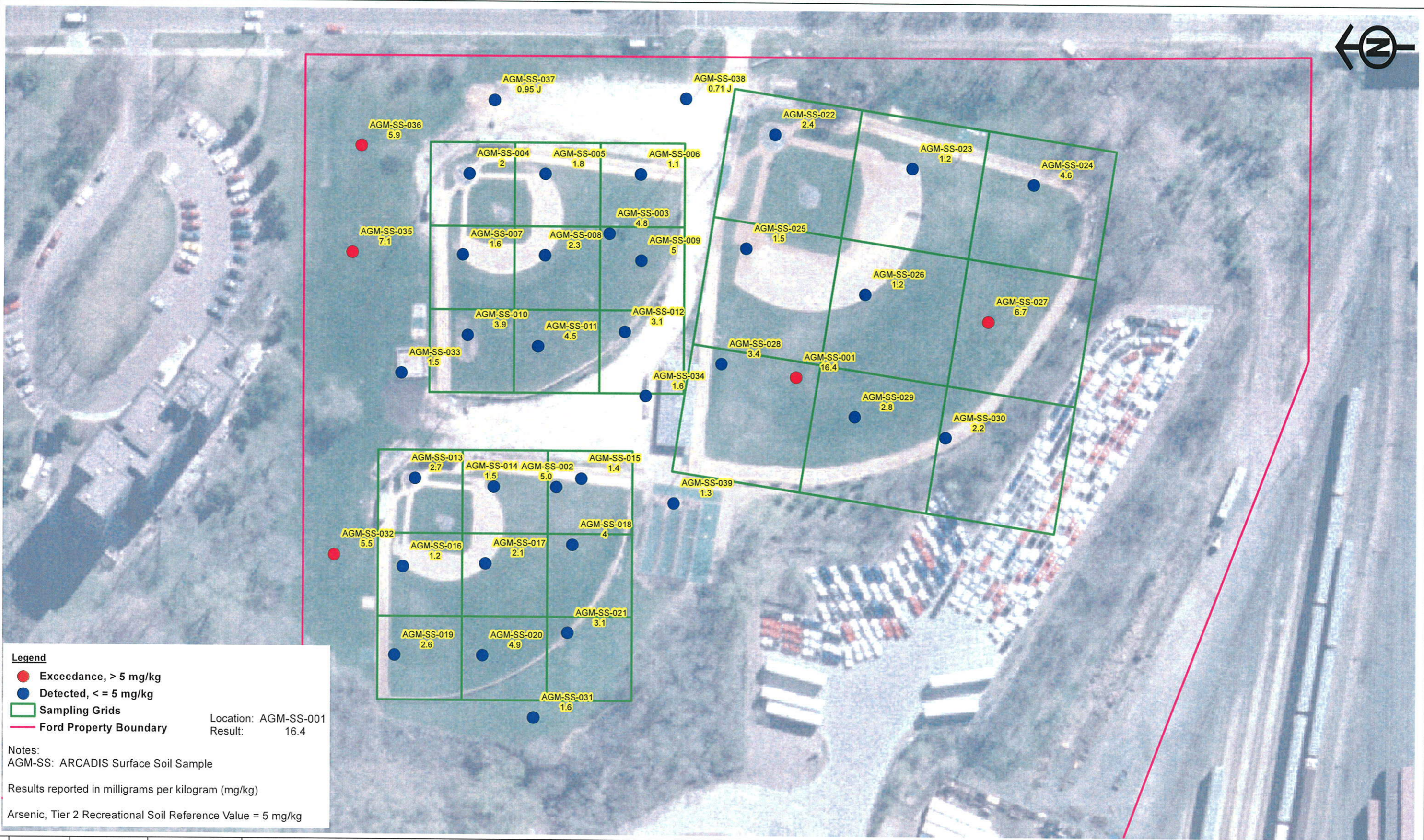
Imagery Source: USGS High Resolution Orthoimagery for the Minneapolis-St. Paul, Minnesota Urban Area



430 First Avenue North, Suite 720
Minneapolis, Minnesota 55401
Tel: (612) 339-9434 Fax: (612) 336-4538

**Soil Boring Locations
Twin Cities Assembly Plant
St. Paul, Minnesota**

Project Number MN000593
Date 27-Nov-07
Figure 4



Legend

- Exceedance, > 5 mg/kg
- Detected, <= 5 mg/kg
- Sampling Grids
- Ford Property Boundary

Location: AGM-SS-001
Result: 16.4

Notes:
AGM-SS: ARCADIS Surface Soil Sample

Results reported in milligrams per kilogram (mg/kg)

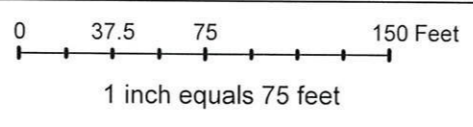
Arsenic, Tier 2 Recreational Soil Reference Value = 5 mg/kg

G:\GIS\Projects\Ford Ranger\ArcMap\Ballfields\BFfield_Arsenic_20071121.mxd - 12/13/2007 @ 11:07:43 AM

Project Manager E. Carman	Assistant Project Manager B. Zinda
Drawn M. Gress	Checked A. Fiskness



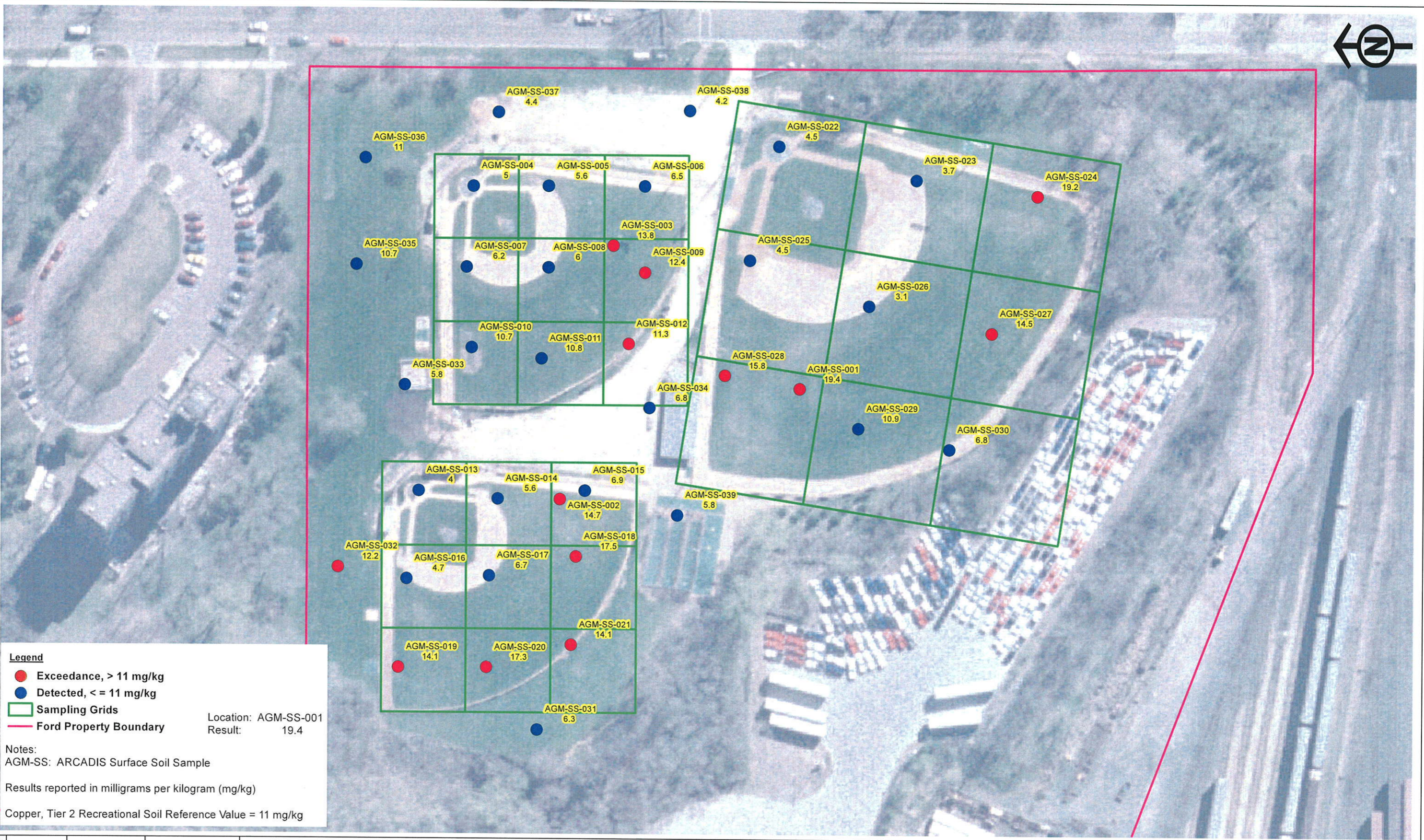
Imagery Source: USGS High Resolution Orthoimagery for the Minneapolis-St. Paul, Minnesota Urban Area



430 First Avenue North, Suite 720
Minneapolis, Minnesota 55401
Tel. (612) 339-9434 Fax (612) 336-4538

Arsenic Surface Soil Sampling Results
Twin Cities Assembly Plant
St. Paul, Minnesota

Project Number MN00593
Date 25-OCT-07
Figure 5



Legend

- Exceedance, > 11 mg/kg
- Detected, <= 11 mg/kg
- Sampling Grids
- Ford Property Boundary

Location: AGM-SS-001
Result: 19.4

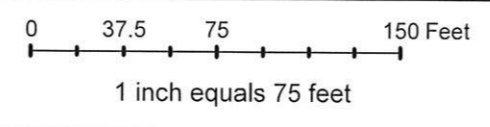
Notes:
AGM-SS: ARCADIS Surface Soil Sample
Results reported in milligrams per kilogram (mg/kg)
Copper, Tier 2 Recreational Soil Reference Value = 11 mg/kg

C:\GIS\Projects\Ford Ranger\ArcMap\Ballfields\BField_Coppet_20071121.mxd - 12/13/2007 @ 10:52:30 AM

Project Manager E. Carman	Assistant Project Manager B. Zinda
Drawn M. Gress	Checked A. Fiskness



Imagery Source: USGS High Resolution Orthoimagery for the Minneapolis-St. Paul, Minnesota Urban Area

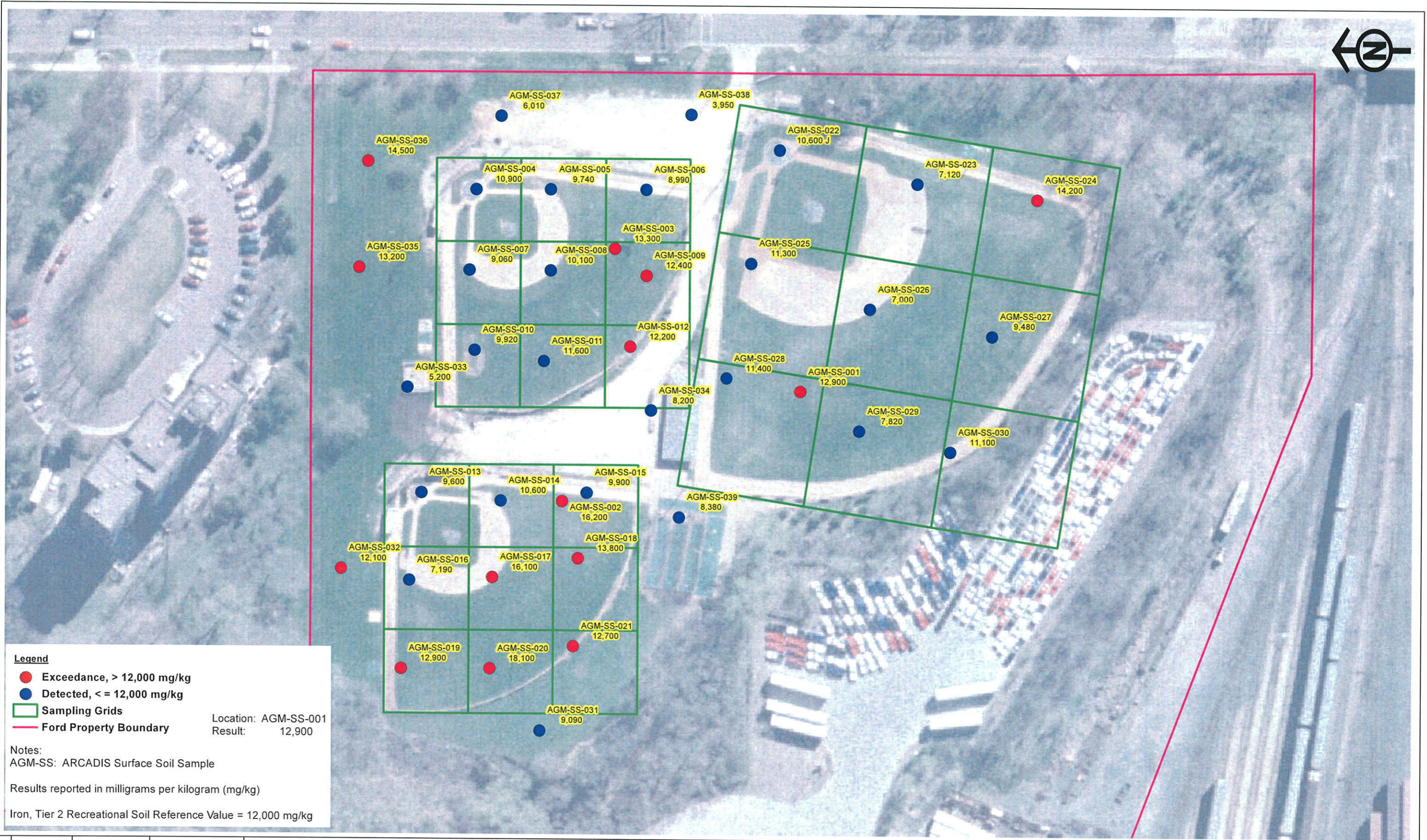


ARCADIS

430 First Avenue North, Suite 720
Minneapolis, Minnesota 55401
Tel: (612) 338-9434 Fax: (612) 336-4538

**Copper Surface Soil Sampling Results
Twin Cities Assembly Plant
St. Paul, Minnesota**

Project Number MN000593
Date 25-OCT-07
Figure 6



Legend

- Exceedance, > 12,000 mg/kg
- Detected, <= 12,000 mg/kg
- Sampling Grids
- Ford Property Boundary

Location: AGM-SS-001
Result: 12,900

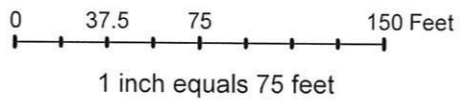
Notes:
AGM-SS: ARCADIS Surface Soil Sample
Results reported in milligrams per kilogram (mg/kg)
Iron, Tier 2 Recreational Soil Reference Value = 12,000 mg/kg

C:\GIS\Projects\Ford Ranger\Act\Map\Ballfields\BField_Iron_20071207.mxd - 12/13/2007 @ 10:54:05 AM

Project Manager E. Carman	Assistant Project Manager B. Zinda
Drawn M. Gress	Checked A. Fiskness



Imagery Source: USGS High Resolution Orthoimagery for the Minneapolis-St. Paul, Minnesota Urban Area



430 First Avenue North, Suite 720
Minneapolis, Minnesota 55401
Tel: (612) 339-9434 Fax: (612) 336-4538

**Iron Surface Soil Sampling Results
Twin Cities Assembly Plant
St. Paul, Minnesota**

Project Number MN000593
Date 25-OCT-07
Figure 7



ASB-071	As	Cu	Fe	ASB-072	As	Cu	Fe	ASB-073	As	Cu	Fe	ASB-074	As	Cu	Fe	ASB-075	As	Cu	Fe	ASB-076	As	Cu	Fe
0-2				0-2				0-2				0-2				0-2				0-2			
2-4	4.4	7.5	14,900	2-4	3	6	13,200	2-4	5	13	14,300	2-4	5	14	15,900	2-4	5	10	22,500	2-4	4	7	15,200
4-6				4-6				4-6				4-6				4-6				4-6			
6-8				6-8	9	8	17,900	6-8				6-8	4	14	22,000	6-8				6-8			
8-10				8-10				8-10				8-10				8-10	7	80	14,600	8-10	0.86J	3	4,670
10-12	3.3	12.3	19,800	10-12				10-12	3	11	7,990	10-12	2	6	8,010	10-12				10-12			
12-14				12-14				12-14				12-14				12-14				12-14			
14-16				14-16				14-16				14-16	1	9	8,850	14-16	<1.1	2.2J	3,610	14-16			

ASB-077	As	Cu	Fe	ASB-078	As	Cu	Fe	ASB-053	As	Cu	Fe	ASB-079	As	Cu	Fe	ASB-080	As	Cu	Fe	ASB-081	As	Cu	Fe	ASB-082	As	Cu	Fe
0-2				0-2				0-2				0-2	4	10	10,400	0-2				0-2				0-2			
2-4	2.1	5.6	11,800	2-4				2-4	7	13	18,700	2-4	5	14	19,600	2-4	2	4	7,280	2-4	4	5	12,500	2-4	5	14	17,000
4-6	7.0	13.2	25,100	4-6	4	10	14,500	4-6	3	9	9,970	4-6				4-6				4-6				4-6	2	7	7,000
6-8	6.0	6.1	21,400	6-8				6-8				6-8	7	12	20,300	6-8				6-8	4	9	13,800	6-8			
8-10				8-10				8-10				8-10				8-10				8-10				8-10			
10-12				10-12	5	10	17,000	10-12				10-12	0.99J	6	6,510	10-12	2	8	11,600	10-12				10-12			

ASB-083	As	Cu	Fe	ASB-084	As	Cu	Fe	ASB-085	As	Cu	Fe	ASB-086	As	Cu	Fe	ASB-049	As	Cu	Fe	ASB-087	As	Cu	Fe
0-2				0-2				0-2				0-2				4-6	7	19	17,100	0-2	2	19	14,900
2-4	2.9	7.3	17,300	2-4	5	13	18,800	2-4	1.1J	3	4,390	2-4	5	16	19,800					2-4			
4-6	2.9	5.9	9,400	4-6	4	8	13,900	4-6	3	7	8,260	4-6								4-6			
6-8	3.2	5.0	9,350	6-8				6-8	7	8	15,400	6-8	12	10	22,700					6-8	13	9	26,600
8-10				8-10				8-10				8-10								8-10			
10-12				10-12	2	3	5,270	10-12				10-12								10-12			

ASB-088	As	Cu	Fe	ASB-089	As	Cu	Fe	ASB-051	As	Cu	Fe	ASB-090	As	Cu	Fe	ASB-050	As	Cu	Fe
0-2				0-2				2-4	5	5	13,600	0-2				4-6	2	10	16,600
2-4	5.9	12.8	20,300	2-4	2	5	7,540					2-4	5	6	15,200				
4-6				4-6								4-6	8	6	17,700				
6-8				6-8	11	16	27,300					6-8							
8-10				8-10															
10-12	5.6	23.2	15,100	10-12															

ASB-091	As	Cu	Fe	ASB-092	As	Cu	Fe	ASB-052	As	Cu	Fe
0-2				0-2				2-4	2	35	20,600
2-4	3.3	10.0	23,300	2-4	5	4	13,100				
4-6				4-6							
6-8	6.0	12.4	16,200	6-8	7	5	13,800				

ASB-093	As	Cu	Fe	ASB-094	As	Cu	Fe
0-2				0-2			
2-4	11	7	15,600	2-4	16	8	28,000
4-6	19	13	21,600	4-6	2	4	7,190
6-8				6-8			

Legend

— Ford Property Boundary

Notes:
ASB: ARCADIS Soil Boring

Results reported in milligrams per kilogram (mg/kg)

As: Arsenic
Cu: Copper
Fe: Iron

Depths are Feet Below Ground Surface (0-2)

ASB-087	As	Cu	Fe
0-2	2.2	18.5	14,900
2-4			
4-6			
6-8	12.9	9.4	26,600

← Outline of one cell within sampling grid

- Exceedance Tier 2 Recreational SRV
- Detection
- Not collected

Intervals not shaded indicate the sample is on hold as of the date of this report (December 19, 2007).

Boring Locations are presented on Figure 3.

SRV: Soil Reference Value

G:\GIS\Projects\Ford Ranger\Map\Ballfields\BField_Analytical_LGrid_20071219.mxd - 12/19/2007 @ 11:08:21 AM

Project Manager
E. Carman

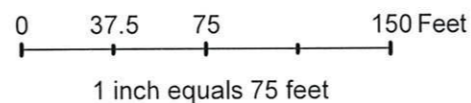
Assistant Project Manager
B. Zinda

Drawn
M. Gress

Checked
T. Nelson-Kalmes



Imagery Source: USGS High Resolution Orthoimagery for the Minneapolis-St. Paul, Minnesota Urban Area



ARCADIS

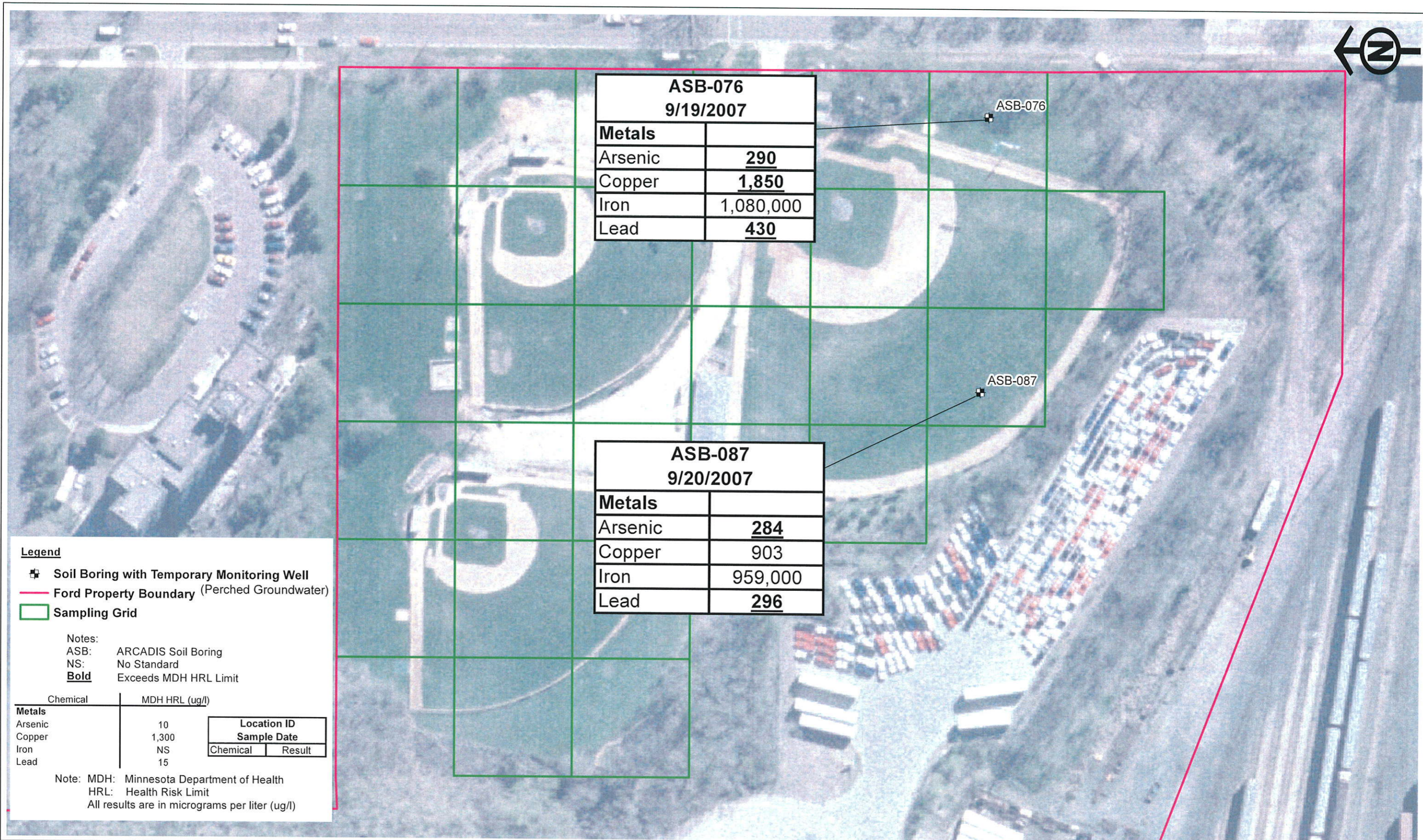
430 First Avenue North, Suite 720
Minneapolis, Minnesota 55401
Tel: (612) 339-9434 Fax: (612) 336-4538

**Arsenic, Copper and Iron Soil Boring Sampling Results
Twin Cities Assembly Plant
St. Paul, Minnesota**

Project Number
MN000593

Date
19-OCT-07

Figure
8



ASB-076 9/19/2007	
Metals	
Arsenic	290
Copper	1,850
Iron	1,080,000
Lead	430

ASB-087 9/20/2007	
Metals	
Arsenic	284
Copper	903
Iron	959,000
Lead	296

- Legend**
- ⊕ Soil Boring with Temporary Monitoring Well
 - Ford Property Boundary (Perched Groundwater)
 - Sampling Grid

Notes:
 ASB: ARCADIS Soil Boring
 NS: No Standard
Bold: Exceeds MDH HRL Limit

Chemical	MDH HRL (ug/l)	Location ID	Sample Date
Arsenic	10		
Copper	1,300		
Iron	NS		
Lead	15		

Note: MDH: Minnesota Department of Health
 HRL: Health Risk Limit
 All results are in micrograms per liter (ug/l)

C:\GIS\Projects\Ford Ranger\ArcMap\Ballfields\BField_LGrid_Exceeds_20071206.mxd - 12/13/2007 @ 10:57:15 AM

Project Manager
E. Carman

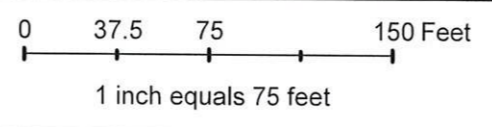
Assistant Project Manager
B. Zinda

Drawn
M. Gress

Checked
T. Nelson-Kalmes



Imagery Source: USGS High Resolution Orthoimagery for the Minneapolis-St. Paul, Minnesota Urban Area



ARCADIS

430 First Avenue North, Suite 720
 Minneapolis, Minnesota 55401
 Tel: (612) 339-9434 Fax: (612) 336-4538

**Perched Groundwater Sampling Results
 Compared to Minnesota Department of Health, Health Risk Limits
 Twin Cities Assembly Plant
 St. Paul, Minnesota**

Project Number
MN000593

Date
25-OCT-07

Figure
9