

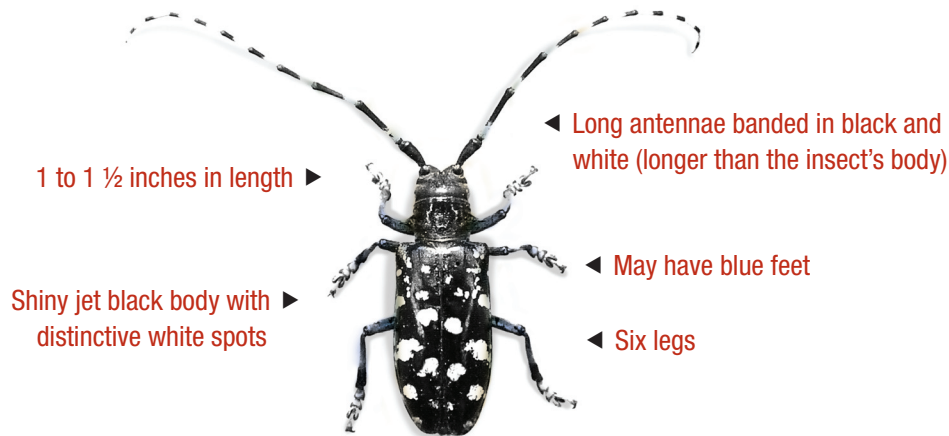
The Asian longhorned beetle is killing our trees.

We need your help to stop it.

**Learn the signs. Look for it. Report it. And never move firewood.
It's that simple — simple as black and white.**

What Is the ALB?

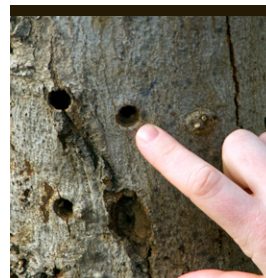
The Asian longhorned beetle is an invasive insect that feeds on certain species of hardwood trees, eventually killing them. Since its discovery in 1996, the ALB has caused tens of thousands of trees to be destroyed in Massachusetts, New York, New Jersey, and Illinois. It bores through the tissues that carry water and nutrients throughout the tree, which cause the tree to starve and die. Fortunately, it's easy to identify this distinctive insect.



The Signs

Throughout its life cycle, this ALB leaves signs of its presence in and around host trees. These include:

- Shallow depressions in the bark where the beetle lays its eggs
- Sawdust-like materials, called frass, on the ground and the branches
- Dime-sized exit holes where the adult beetle emerges
- Dead branches and canopy dieback



For more information, visit www.beetlebusters.info.

Trees at Risk

- Ash ■ Birches ■ Boxelder maple ■ Elm ■ European mountain ash ■ Hackberry ■ Horsechestnut ■ London planetree
- Norway maple ■ Mimosa ■ Poplars (excluding cottonwood) ■ Red maple ■ Silver maple ■ Sugar maple ■ Willow



Be a Beetle Buster



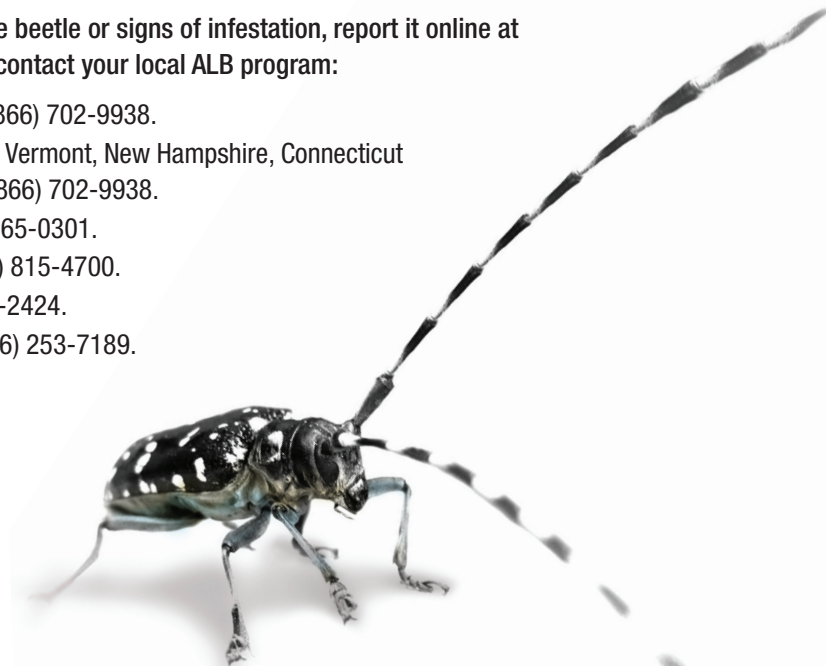
With your help, we can stop the ALB. Here's what you can do:

- Know the signs and look for the ALB. If you find evidence of this invasive pest, report it immediately.
- Never move firewood because it may contain the ALB, its larvae, or eggs. Always burn firewood where you get it.
- Allow officials access to your property to inspect for the ALB or any necessary work.
- Don't plant ALB host trees.

Report Your Sightings

If you think you've found the beetle or signs of infestation, report it online at www.beetlebusters.info or contact your local ALB program:

- In Massachusetts, call (866) 702-9938.
- In New England, (Maine, Vermont, New Hampshire, Connecticut and Rhode Island) call (866) 702-9938.
- In New York, call (866) 265-0301.
- In New Jersey, call (732) 815-4700.
- In Illinois, call (847) 699-2424.
- In Pennsylvania, call (866) 253-7189.



For more information, visit www.beetlebusters.info.