

# PALACE RECREATION CENTER



## RENOVATION AND EXPANSION

**DESIGN  
OPEN  
HOUSE**

**TUESDAY**

**OCTOBER 28TH, 6PM**

**781 PALACE AVE. ST. PAUL, MN 55102**

**Saint Paul Parks and Recreation**





# Agenda

- I. Welcome
- II. Project Background
- III. Building Design Overview
- IV. Review of the Design Boards

Project Manager:  
Chris Stark, AIA, LEED AP  
400 City Hall Annex, 25 West 4<sup>th</sup> St., Saint Paul, MN 55102  
[Christopher.stark@ci.stpaul.mn.us](mailto:Christopher.stark@ci.stpaul.mn.us)  
651-266-6419



# Goals & Hopes for Palace

- Welcoming
- Bright
- Improved Image
- Improved Safety
- Multi-Generational
- Family Oriented
- Positive for the Community




Palace Community Meeting, 1954



# 2009 Project Study

- Evaluation / Assessment – 3 Schemes
- Defined Anticipated Budget
- Identified Concerns
  - Safety/Security
  - Visibility
  - Accessibility/Code Concerns
  - Mechanical Upgrades / Insulation
  - Flexible and Adaptable
- Developed Building Program – For All Ages
  - Fitness Room
  - Warming Room
  - Multipurpose/Community Room
  - Fitness Room
  - Rec Check
  - Teen
  - Lobby

HAGEN, CHRISTENSEN & MCILWAIN  
ARCHITECTS



**Facility Upgrade Study**  
for the  
**Palace Recreation Center**  
St. Paul, MN  
January 30, 2009

PH 612-904-1332 FAX 612-904-7366  
4201 CEDAR AVENUE SOUTH MINNEAPOLIS, MN 55407

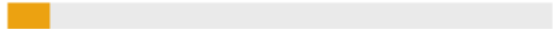
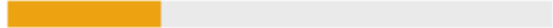
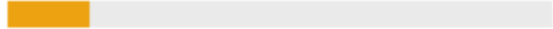

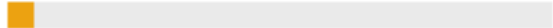
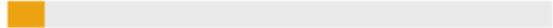
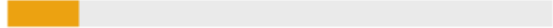
# Online Survey

- Verify the results of the 2009 study
- 9 Questions
- [www.surveymonkey/s/palacerec](http://www.surveymonkey/s/palacerec)



*Question 4: What is most important for the Palace Rec Center Renovation/Expansion to include?*

Showing 7 custom categories

<b>Fitness Center</b> View all • Edit • Delete		7.58%	10
<b>New Programming/Equip.</b> View all • Edit • Delete		28.03%	37
<b>Playground/Fields/Rink</b> View all • Edit • Delete		15.15%	20
<b>Restrooms</b> View all • Edit • Delete		5.30%	7
<b>Splash Pad</b> View all • Edit • Delete		4.55%	6
<b>Warming Room</b> View all • Edit • Delete		6.82%	9
<b>Windows</b> View all • Edit • Delete		12.88%	17



# Project Process & Schedule



## Community Process to Date

Facility Upgrade Study	2008-2009
Online Survey	<i>Ongoing</i>
Design Advisory Committee #1	09/30/14
Design Advisory Committee #2	10/22/14
<b>Design Open House #1</b>	<b>10/28/14</b>
Design Advisory Committee #3	12/02/14
Design Open House #2	01/13/15

## Design Process (Draft) Date

Schematic Design	09/30/14
<b>Design Development</b>	<b>11/09/14</b>
Construction Documents	01/13/14
Construction Begins	2015



# Project Process

## Cost Analysis

- 50% Design Development Estimate
- Cost Escalations
- Finishes and Square Feet

Twin Cities construction boom means higher bids for cities' improvement plans

Article by: SUSAN FEYDER, Star Tribune | Updated: August 31, 2014 - 7:31 PM

Busy contractors mean fewer bids and higher prices for community projects.



hide

Urban Companies employee Scott Naliminski worked on building rain gardens in Bloomington, part of a citywide project.

Photo: David Joles •  
djoles@startribune.com,  
Star Tribune photo galleries »  
view larger »

11 comments | resize text | print | buy reprints

Share 3 | Tweet 7 | + | | | |







**RESIDENTIAL**

**RESIDENTIAL**

**EXISTING  
ICE RINK**

**EXISTING  
FIELDS**

**EXISTING  
BUILDING**

Palace Park

# Palace Community Center

Saint Paul, Minnesota

Existing  
Site



LAWAL SCOTT ERICKSON ARCHITECTS INC





W. JEFFERSON AVE

VIEW STREET

BAY STREET

ICE RINK

ELECTRICAL ENCLOSURE

PARKING

PALACE

PEACE GARDEN

ENTRY

PLAY AREA

PLAY AREA

MEMORIAL

SOFTBALL

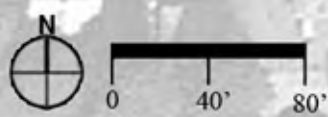
FOOTBALL SOCCER

SOFTBALL

BASEBALL

RAIN GARDEN

PALACE AVE



# Palace Community Center

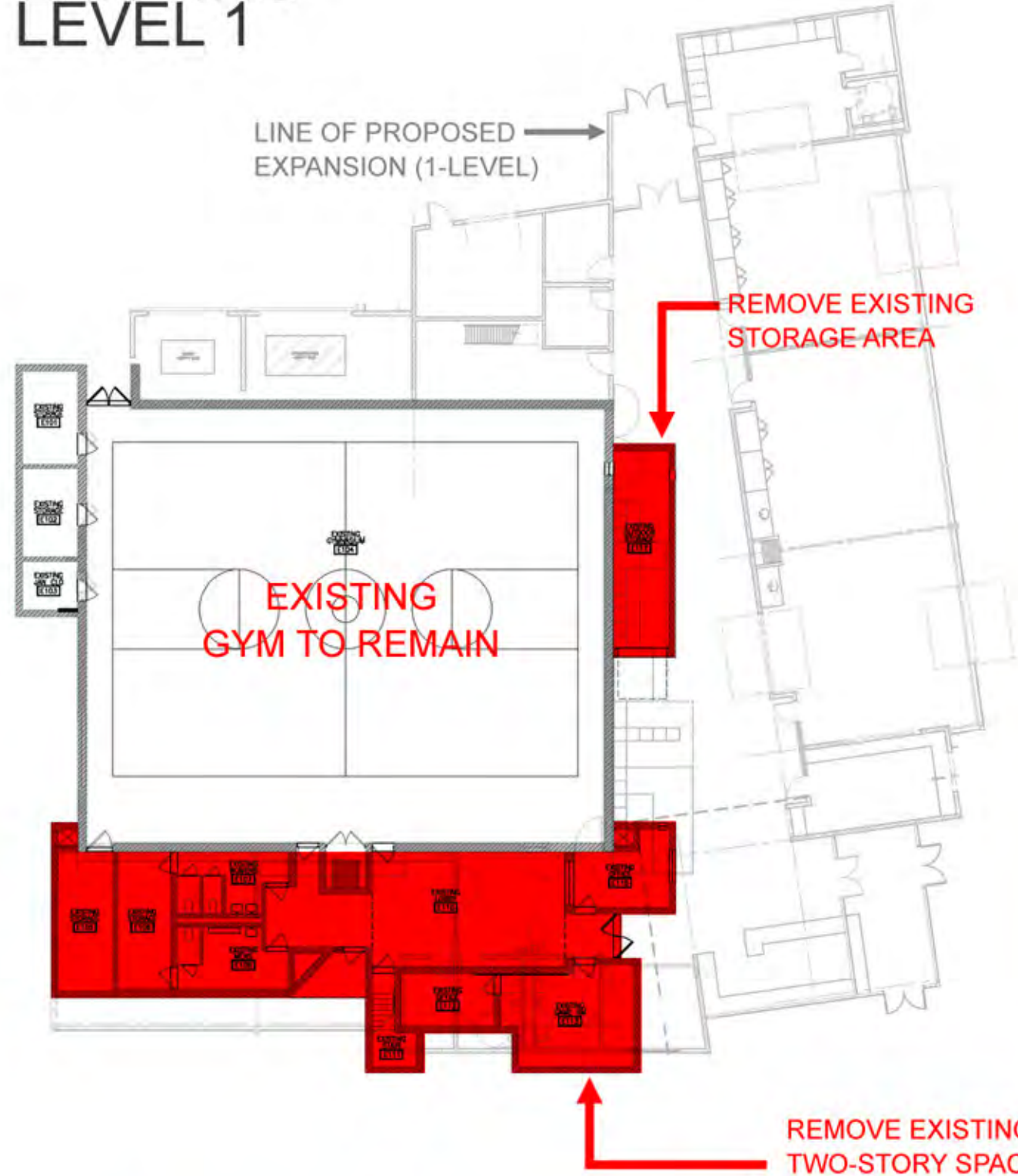
Saint Paul, Minnesota

Proposed Site Plan

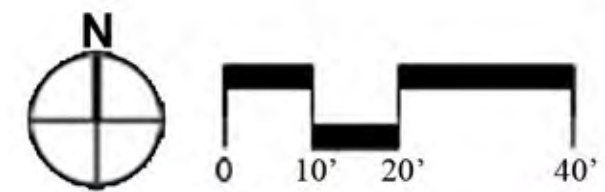
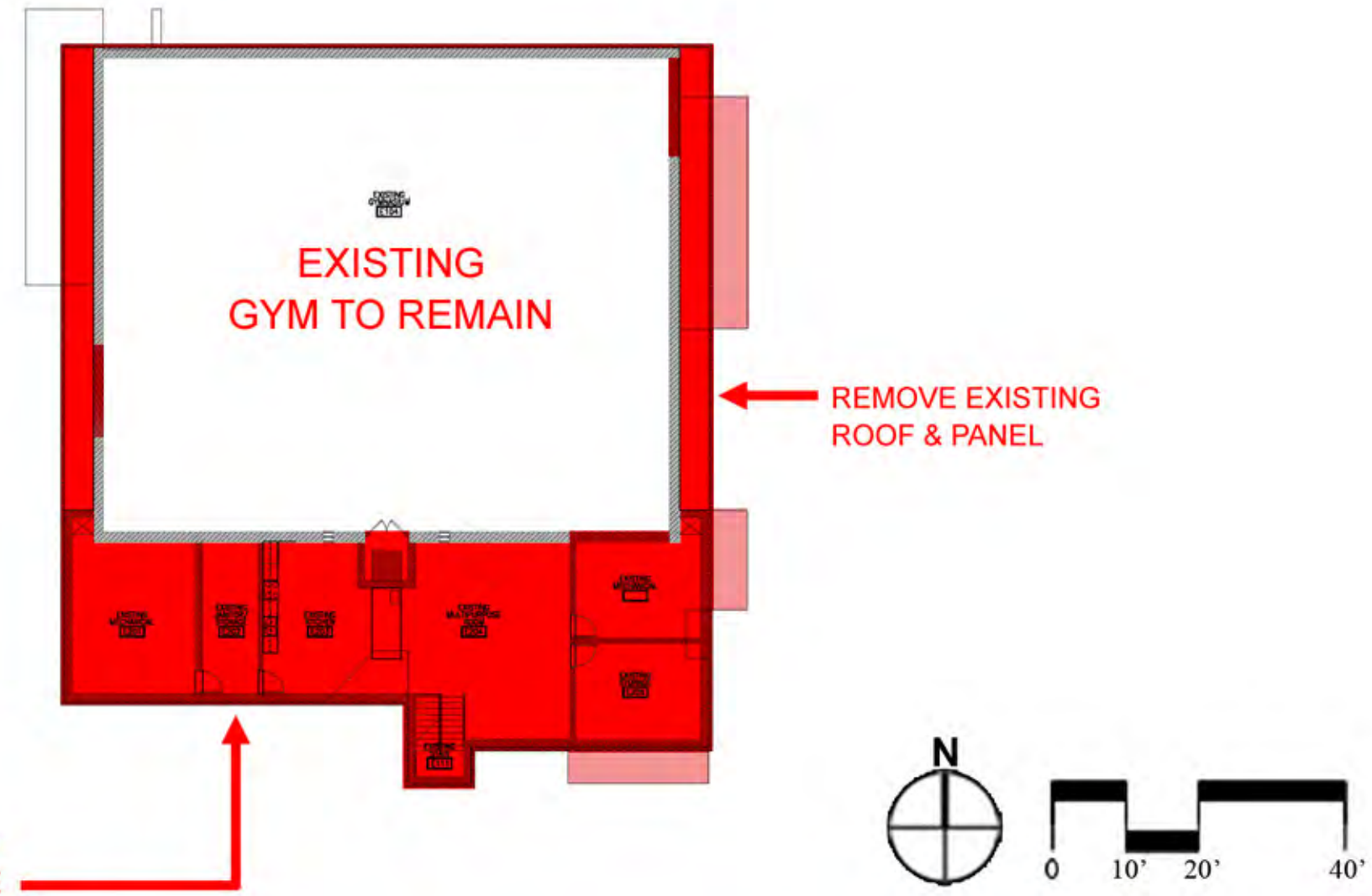




# EXISTING LEVEL 1



# EXISTING LEVEL 2



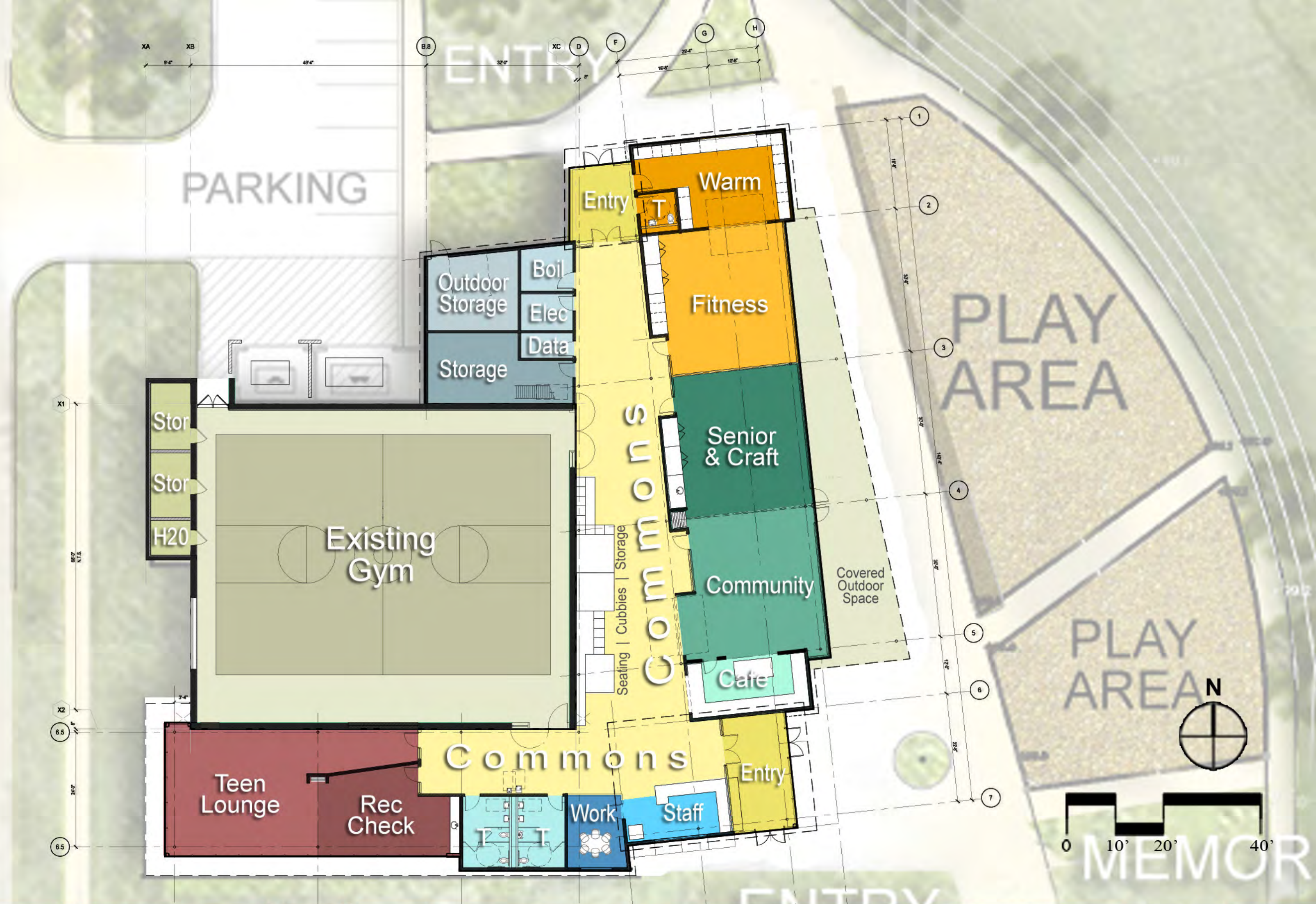
# Palace Community Center

Saint Paul, Minnesota

Existing Floor Plan  
& Proposed Demo







# Palace Community Center

Saint Paul, Minnesota

Proposed Floor Plan







View from South East



# Palace Community Center

Saint Paul, Minnesota

Schematic  
Imagery







View from South East



# Palace Community Center

Saint Paul, Minnesota

Schematic  
Imagery







View from South West



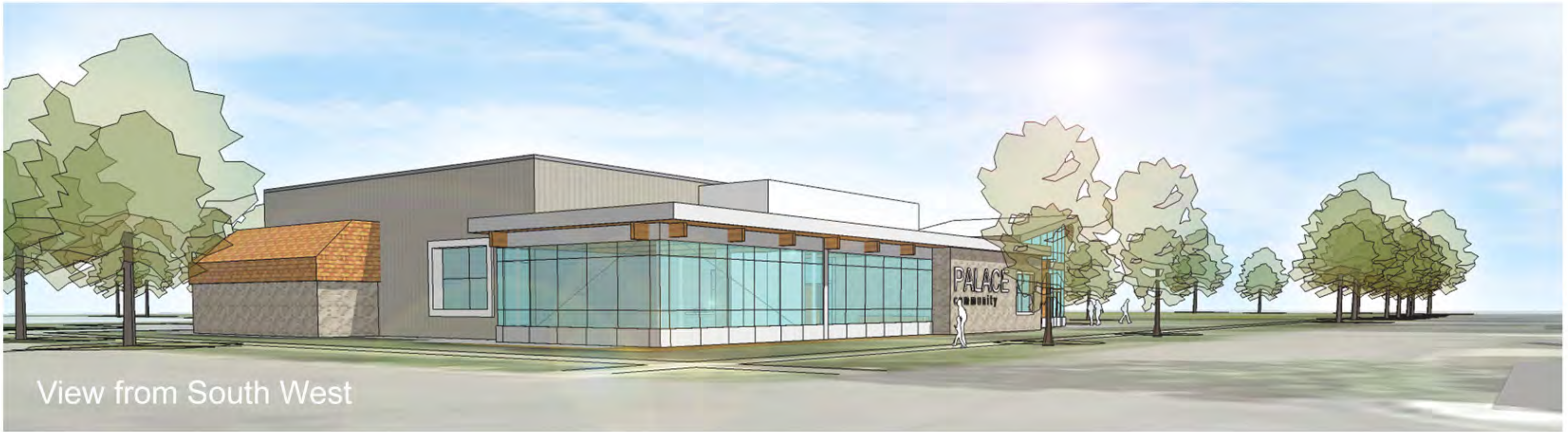
# Palace Community Center

Saint Paul, Minnesota

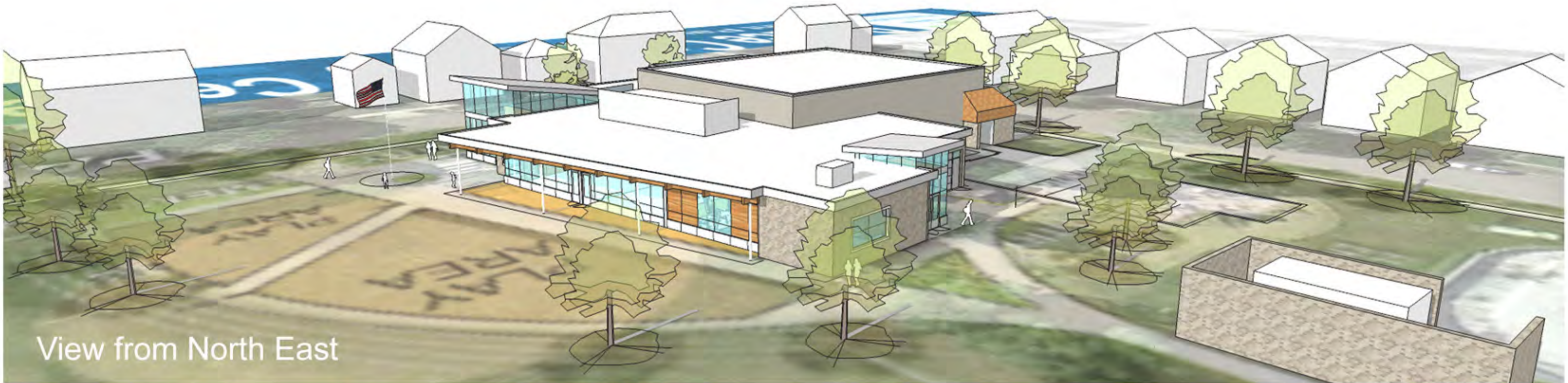
Schematic  
Imagery







View from South West



View from North East



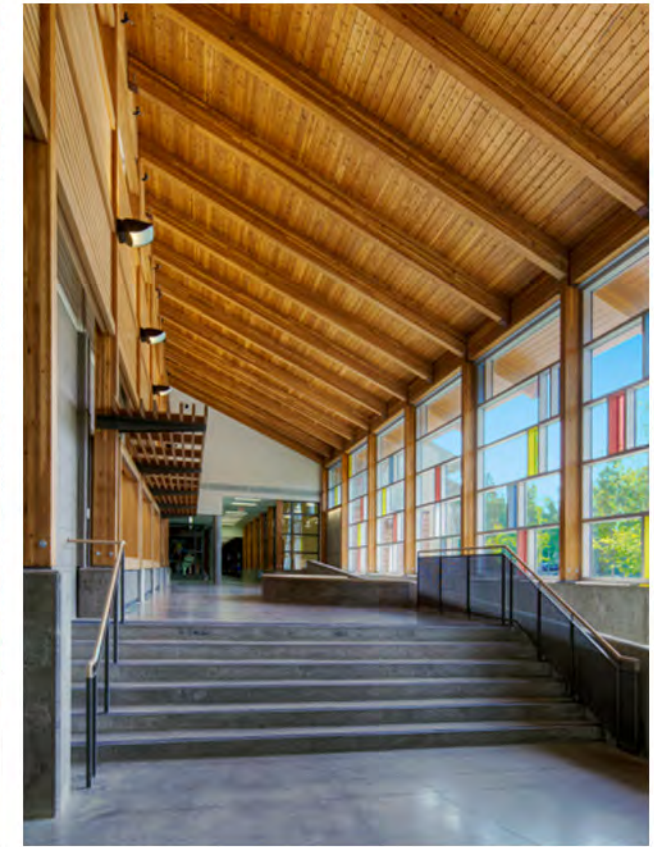
# Palace Community Center

Saint Paul, Minnesota

Schematic  
Imagery







# Palace Community Center

Saint Paul, Minnesota

Precedent  
Images





# Thank You!

Project Website:

<http://www.ci.stpaul.mn.us/index.aspx?NID=2907>

Chris Stark, AIA, LEED AP  
400 City Hall Annex, 25 West 4<sup>th</sup> St  
Saint Paul, MN 55102  
christopher.stark@ci.stpaul.mn.us  
651-266-6419