

EXISTING SITE

FROCTOWN PARK AND FARM, JANUARY 4, 2014





Childrens garden



Farm play



Hoop house



Plaza with chess tables



Seating/Gathering



Orchard



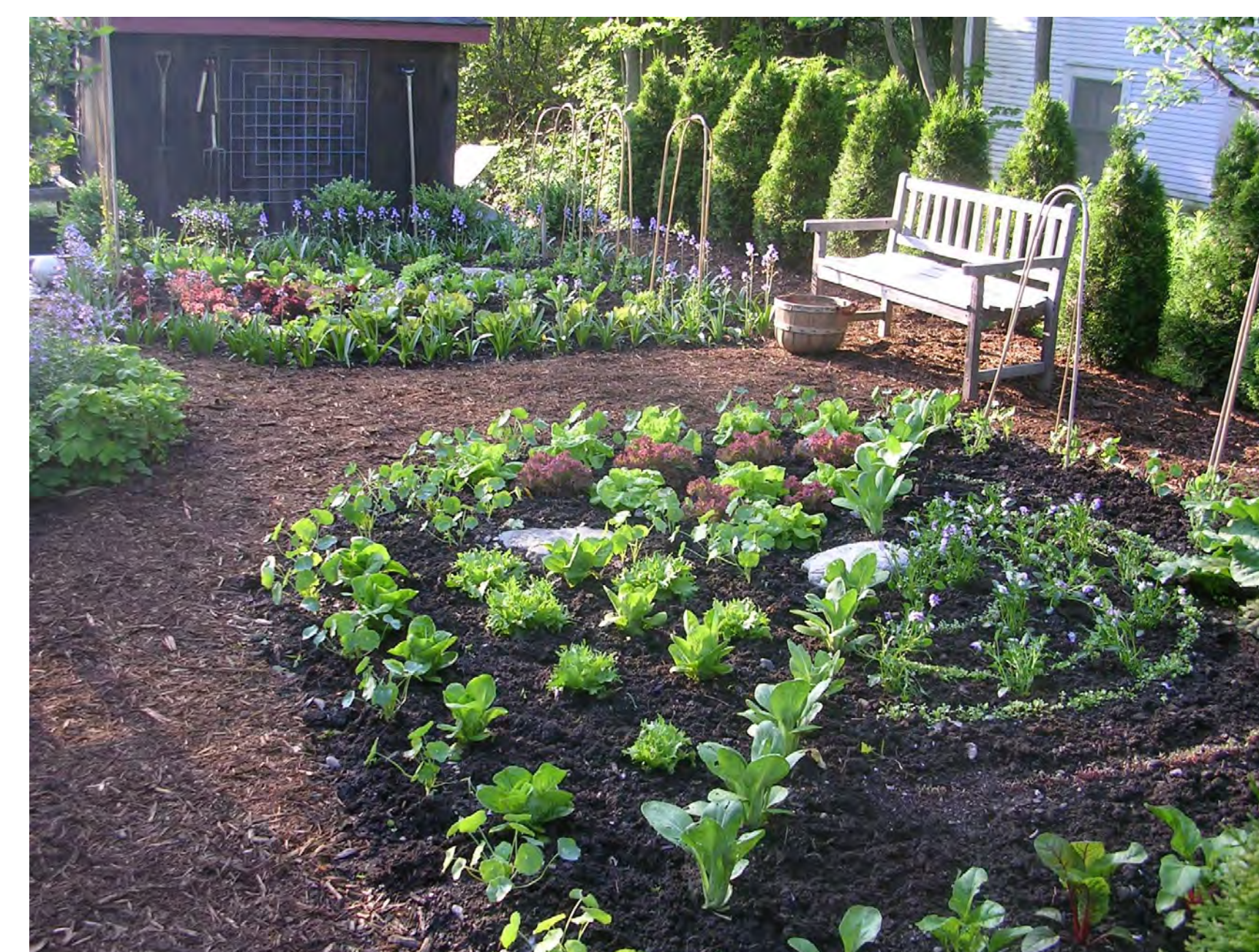
Apiary/ Bee hives



Windmill Icon/ Energy production



Edible plantings



Kitchen Garden



Demonstration garden



Food production garden

FROGTOWN PARK AND FARM
JANUARY 4, 2014



Farm with natural buffer



Native grasses on hillside



Native plantings under oak trees



Open lawn for non-programmed play



Embankment slide



Natural play area



Amphitheater

DESIGN CONCEPT

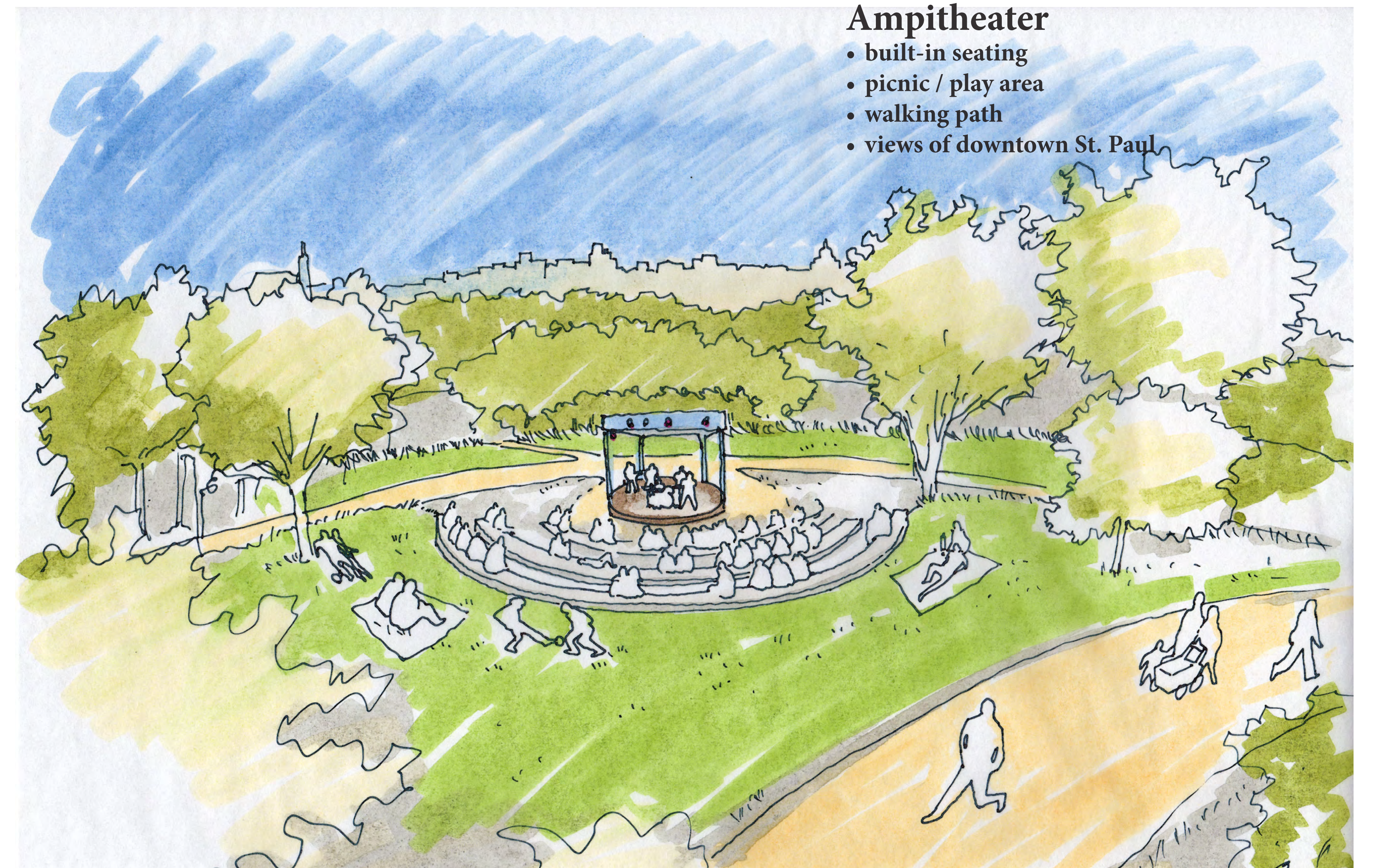
FROCTOWN PARK AND FARM, JANUARY 4, 2014





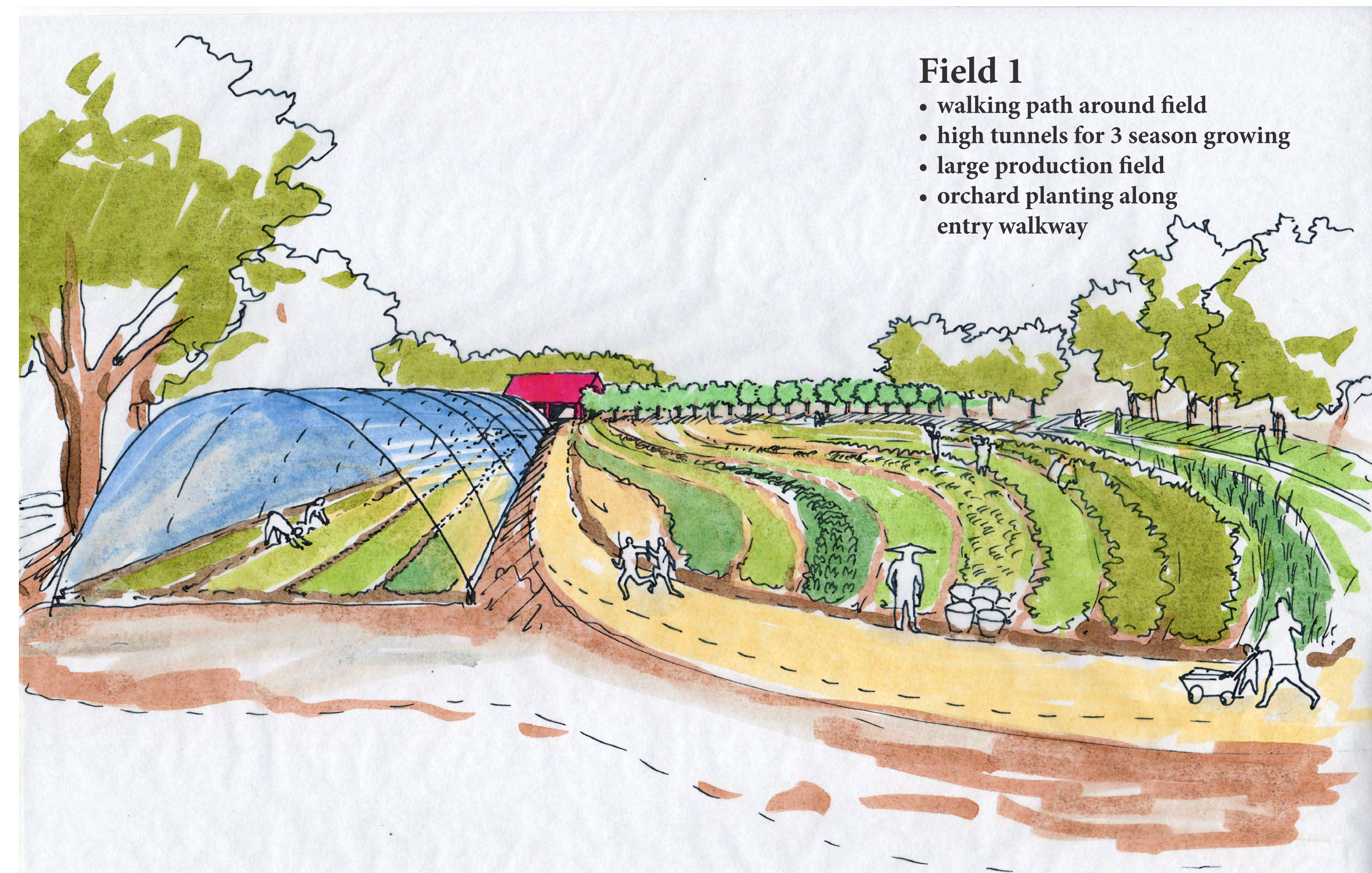
Farm Plaza

- orchard grove
- outdoor pizza oven
- picnic tables under fruit trees
- barn and farmhouse
- play area
- kitchen and childrens' gardens



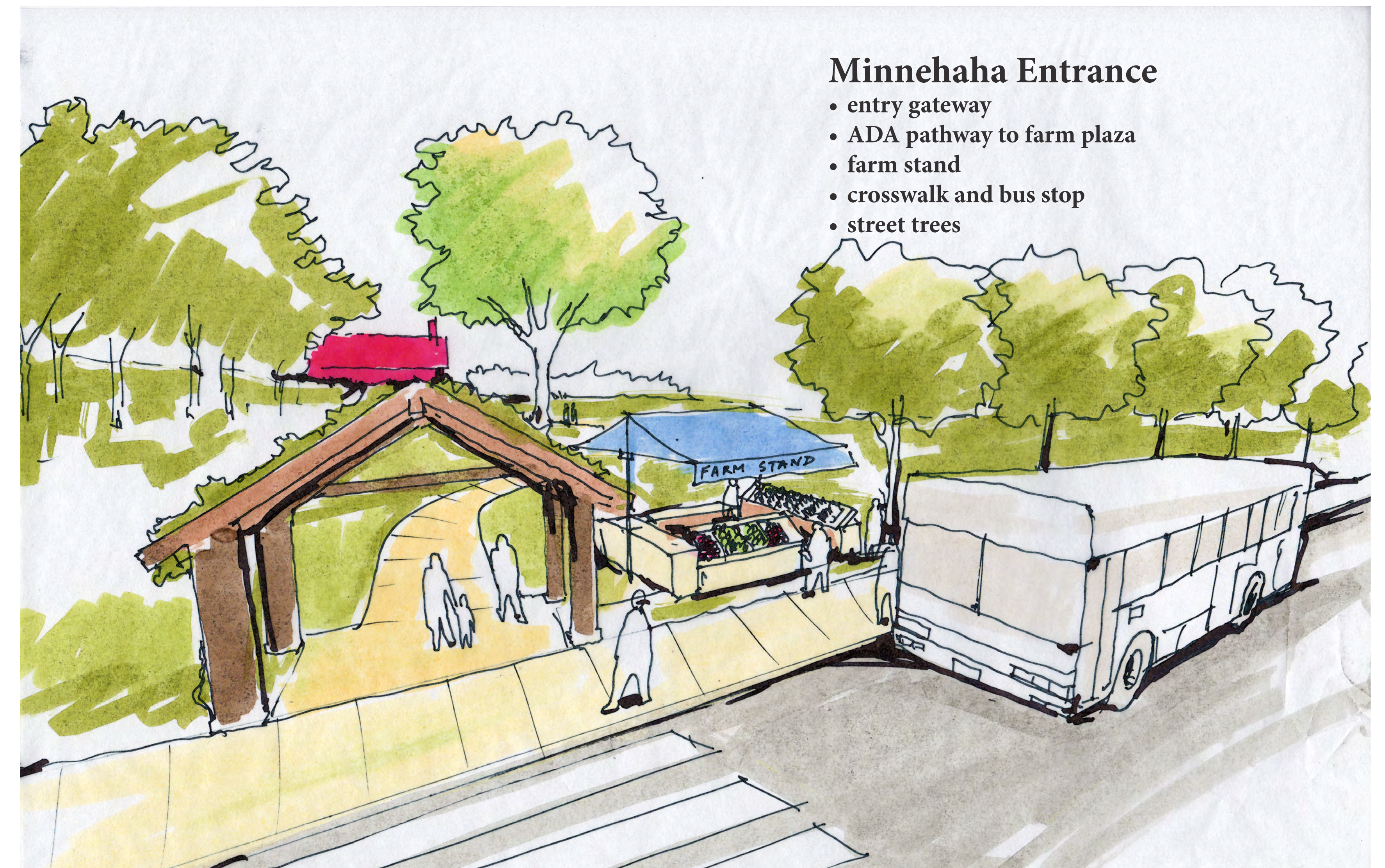
Amphitheater

- built-in seating
- picnic / play area
- walking path
- views of downtown St. Paul



Field 1

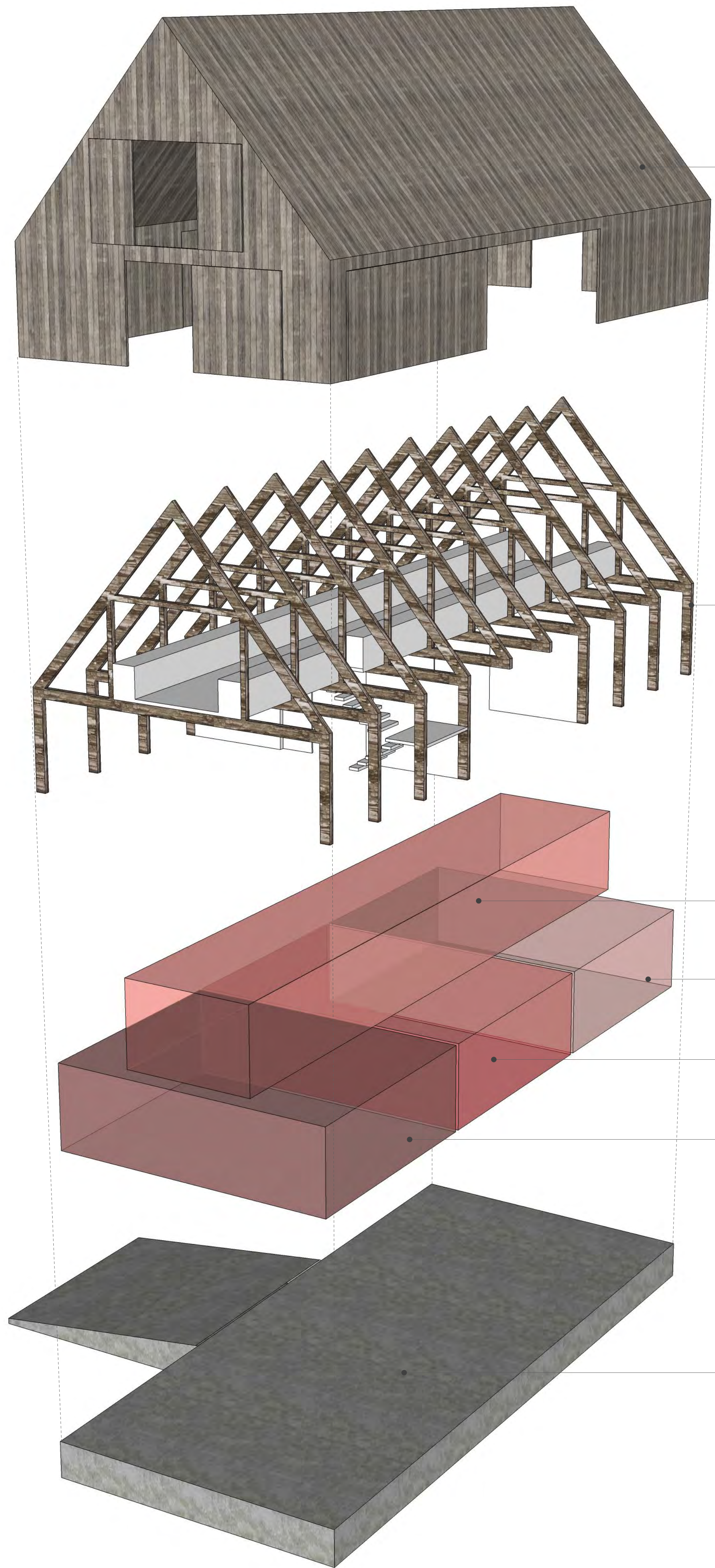
- walking path around field
- high tunnels for 3 season growing
- large production field
- orchard planting along entry walkway



Minnehaha Entrance

- entry gateway
- ADA pathway to farm plaza
- farm stand
- crosswalk and bus stop
- street trees

THE BARN



SHELL

RECLAIMED BARN PLANK SIDING AND ROOFING
RECLAIMED BARN PLANK EXTERIOR SLIDING BARN DOORS

FRAME

RECLAIMED BARN TIMBERS OR RECONSTRUCTED BARN FRAME
INTERIOR FINISHES
WHITWASH WOOD WALLS, FLOORS AND STAIRS

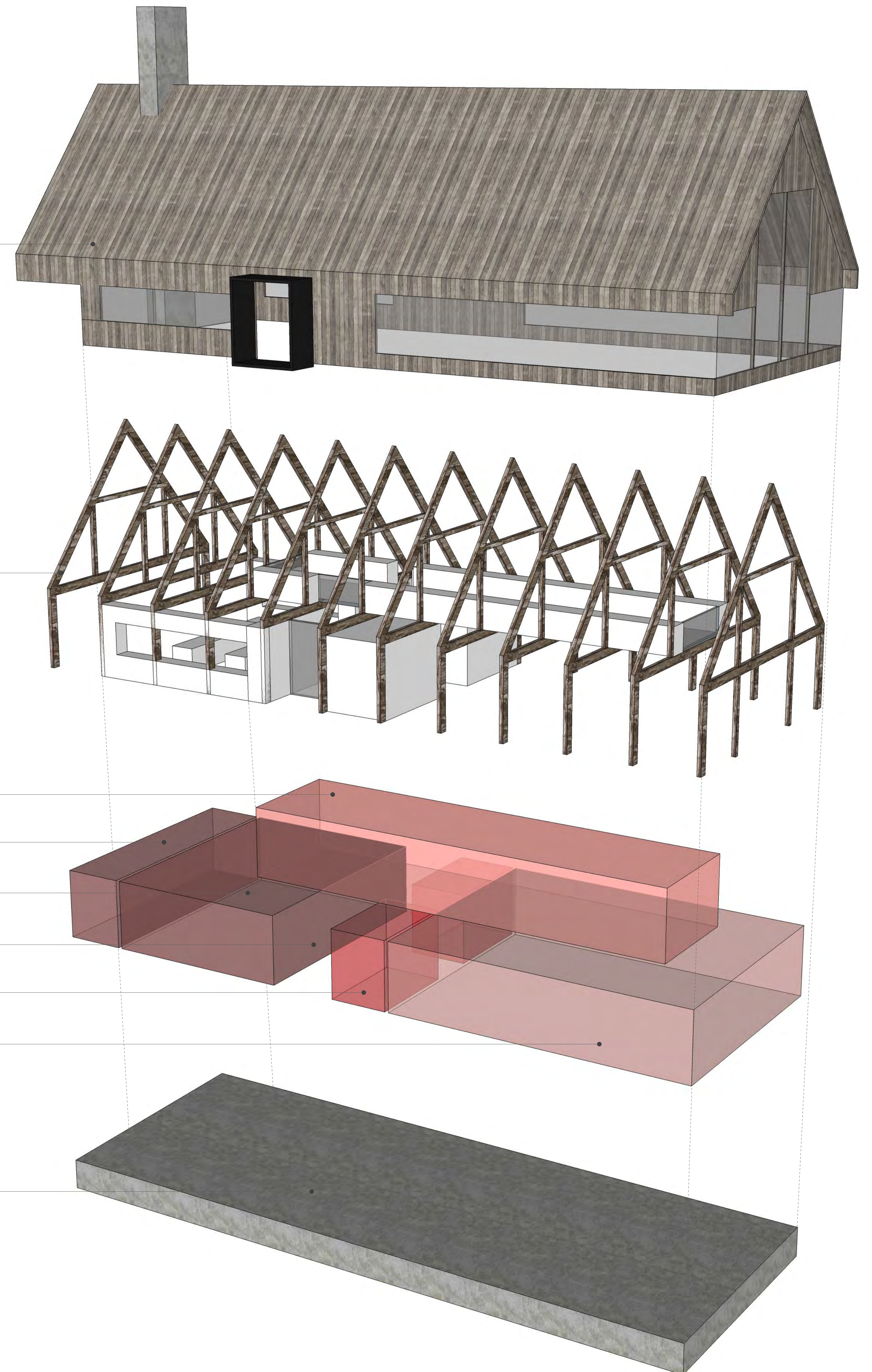
PROGRAM

LOW USE, LONG TERM TOOL, SEED AND PRODUCE STORAGE 1296 SF
QUICK USE, SHORT TERM TOOL, SEED AND PRODUCE STORAGE 512 SF
FARM EQUIPMENT AND VEHICLE STORAGE PUBLIC COVERED ENTRY 768 SF
PACKING SHED \ PACK HOUSE 1024 SF

FOUNDATION

ENTRY RAMP
INTEGRAL POUR CONCRETE FROST FOOTING AND SLAB FLOOR

THE FARM HOUSE



SHELL

RECLAIMED BARN PLANK SIDING AND ROOFING ON
STRUCTURALLY INSULATED PANELS
INSULATED GLASS IN BLACK AND WHITE ALL ULTREX WINDOW FRAMES
POWDER COATED STEEL TRIM AND ENTRY PORCH

FRAME

RECLAIMED BARN TIMBERS OR RECONSTRUCTED BARN FRAME
INTERIOR FINISHES
WHITWASH WOOD WALLS, FLOORS AND STAIRS
SMOOTH TROWELED CONCRETE AND PORTLAND CEMENT FIREPLACE

PROGRAM

OFFICES 768 SF
OUTDOOR KITCHEN 256 SF
INDOOR KITCHEN 1024 SF
ENTRY AND VERTICAL CIRCULATION 256 SF
BATHROOMS 256 SF
PUBLIC MEETING SPACE 1280 SF

FOUNDATION

INTEGRAL POUR CONCRETE FROST FOOTING AND SLAB FLOOR
OVER 24" SAND AND 6" RIGID INSULATION



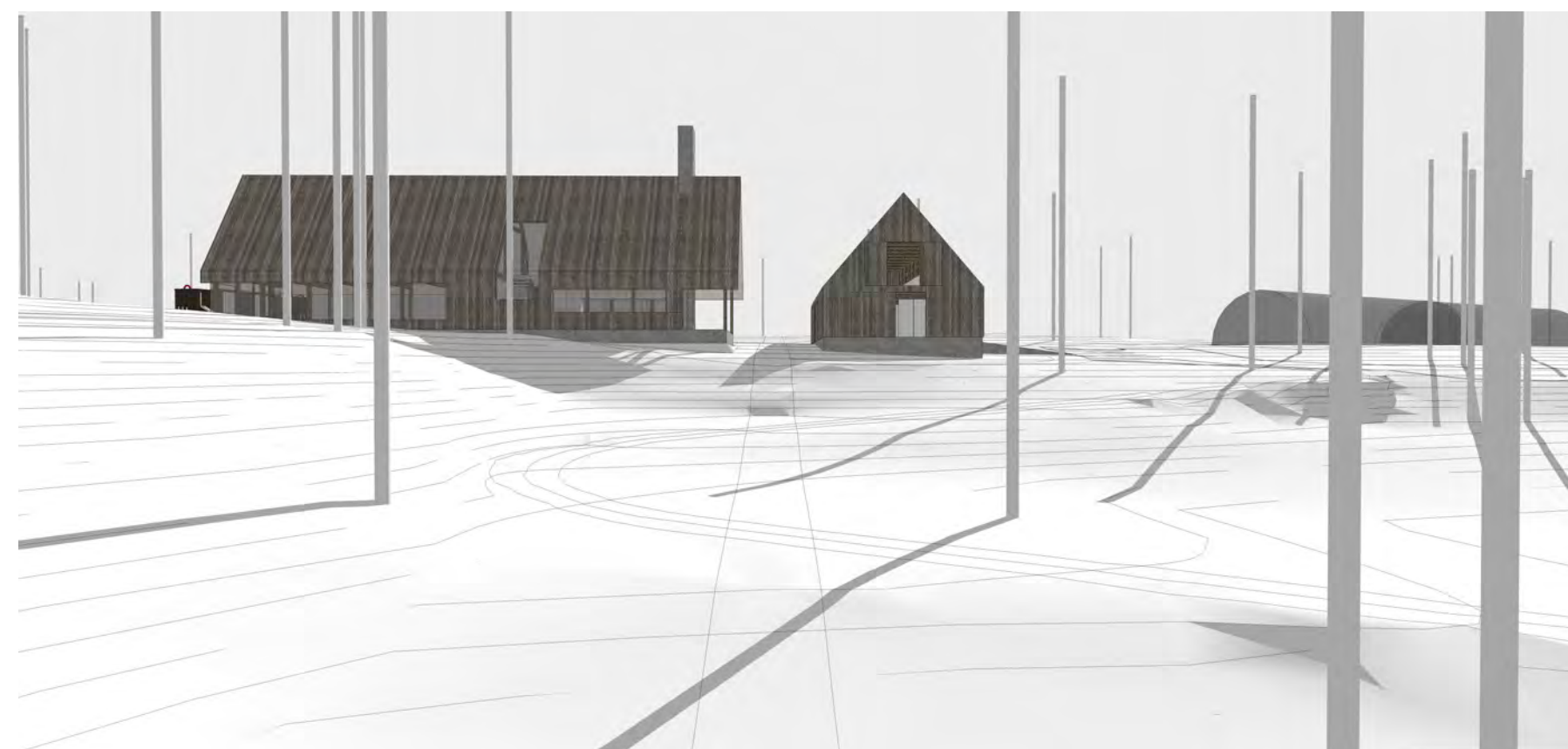
EXTERIOR RENDERINGS



SOUTHEAST EXTERIOR



WEST EXTERIOR



NORTH EXTERIOR

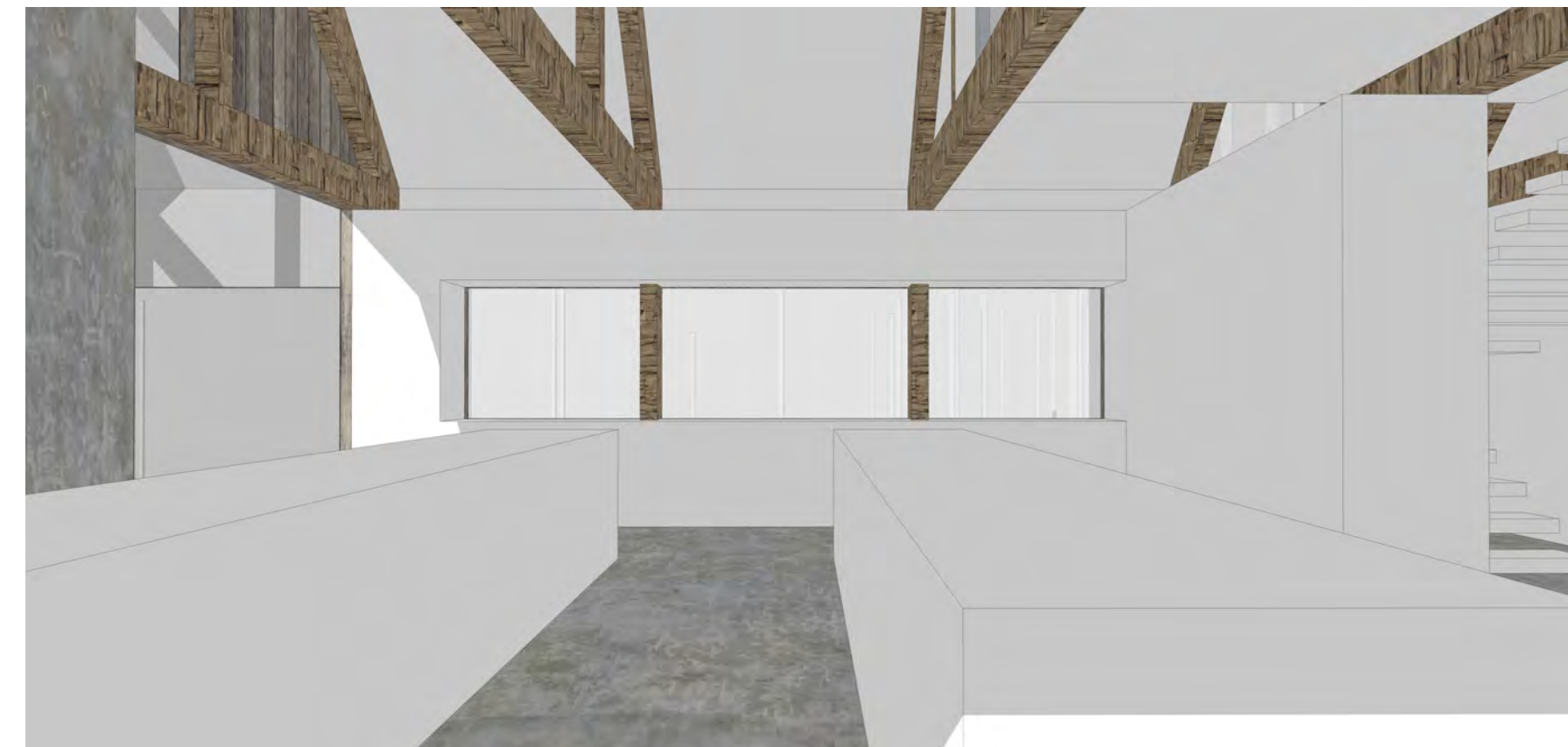


SOUTH EXTERIOR

EXTERIOR RENDERINGS



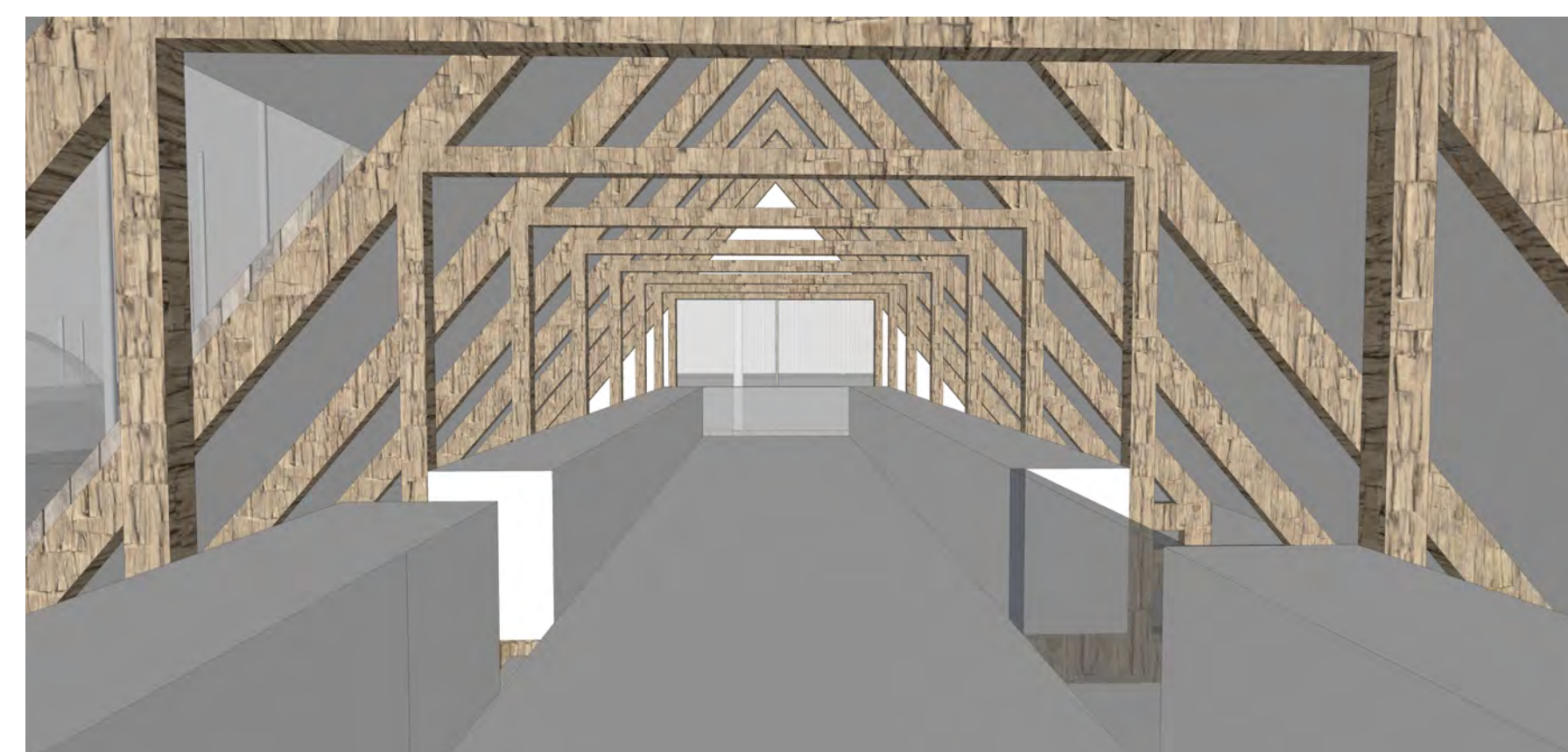
WEST KITCHEN INTERIOR



NORTH KITCHEN INTERIOR

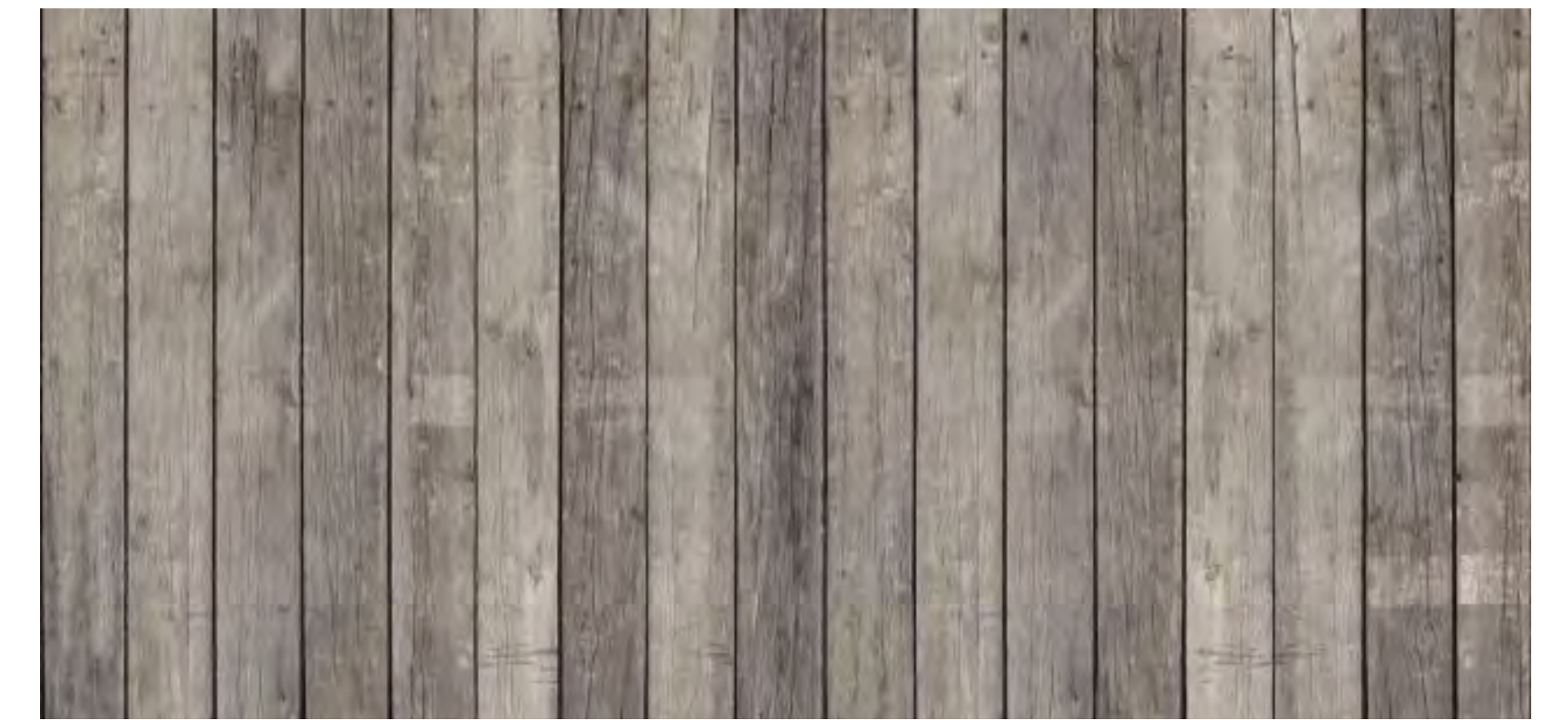


WEST PUBLIC MEETING ROOM INTERIOR



WEST OFFICE INTERIOR

MATERIALS



RECLAIMED BARN PLANK



RECLAIMED BARN TIMBER



SMOOTH CONCRETE | PORTLAND CEMENT



WHITWASHED WOOD

MATERIAL PALETTE

FROGTOWN PARK AND FARM
JANUARY 4, 2014



artistic.....

natural.....

BENCHES/SEATING



BIKE RACK



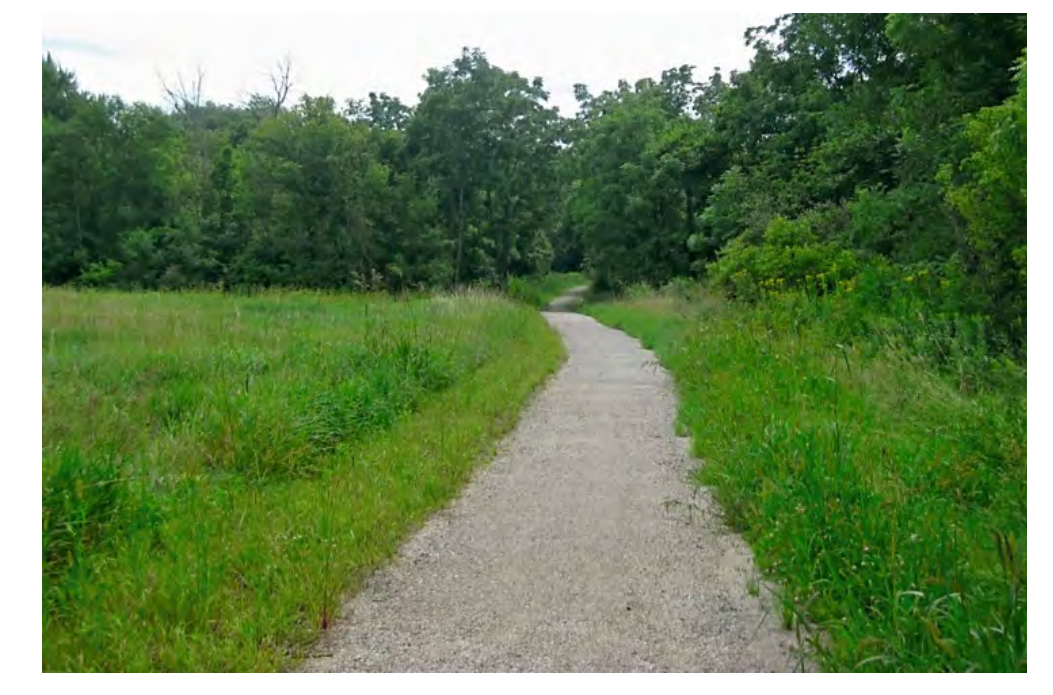
PICNIC TABLE



TRASH RECEPTACLE



TRAILS



Main north/south concrete walkway

Concrete or Bituminous paths for accessibility

Paver accent in central plaza

Gravel trails around fields

BUILDING FROGTOWN FARM SOIL

FROGTOWN PARK AND FARM, DECEMBER 10, 2013



ST. PAUL COMPOST PARTNERS

- Battle Creek
- Frank & Sims
- Midway
- Summit Hill

COMPOST PRODUCTION & DELIVERY



COMPOSTING



RAISED BEDS



DEEP RIP OF SOIL



PLANTING SOIL

FIX THE SOIL

1. Loosen existing soil 12" deep
2. On 3 acres, add 400 yards of Compost (16 semi-loads). Mix it 6" deep into existing soil with Sulfur, Blood Meal, Feather Meal, Bone Meal, Potassium Sulfate, & Magnesium Sulfate.

GROW FOOD

1. Add 2" layer of compost to growing areas and mix into the soil with Blood meal or Feather Meal EVERY YEAR

GOOD SOIL



2014

2015

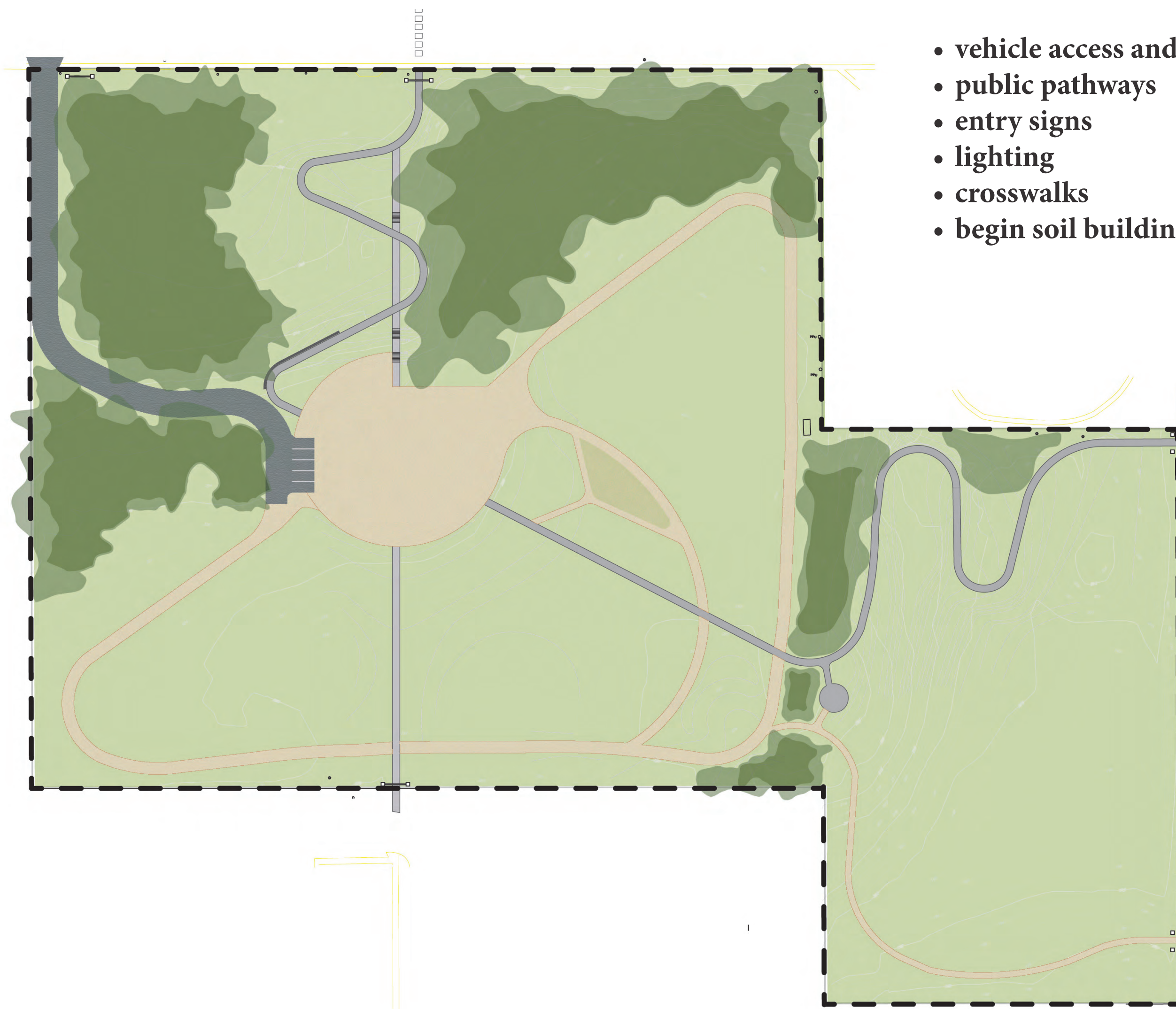
2016

4"

12"

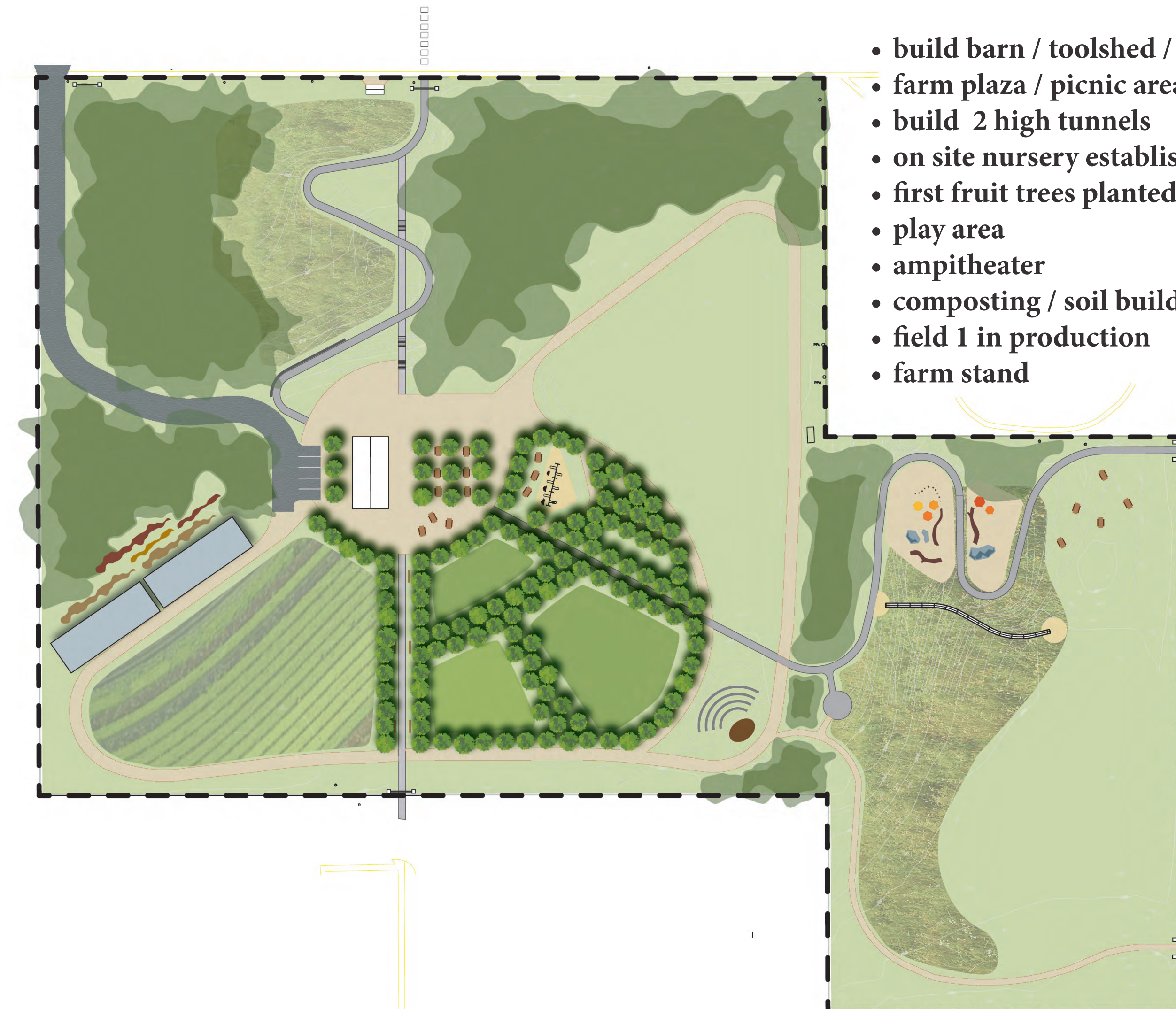


YEAR 1



- vehicle access and parking
- public pathways
- entry signs
- lighting
- crosswalks
- begin soil building program

YEAR 2



- build barn / toolshed / packing house
- farm plaza / picnic area / bathrooms
- build 2 high tunnels
- on site nursery established
- first fruit trees planted
- play area
- amphitheater
- composting / soil building
- field 1 in production
- farm stand

YEAR 3

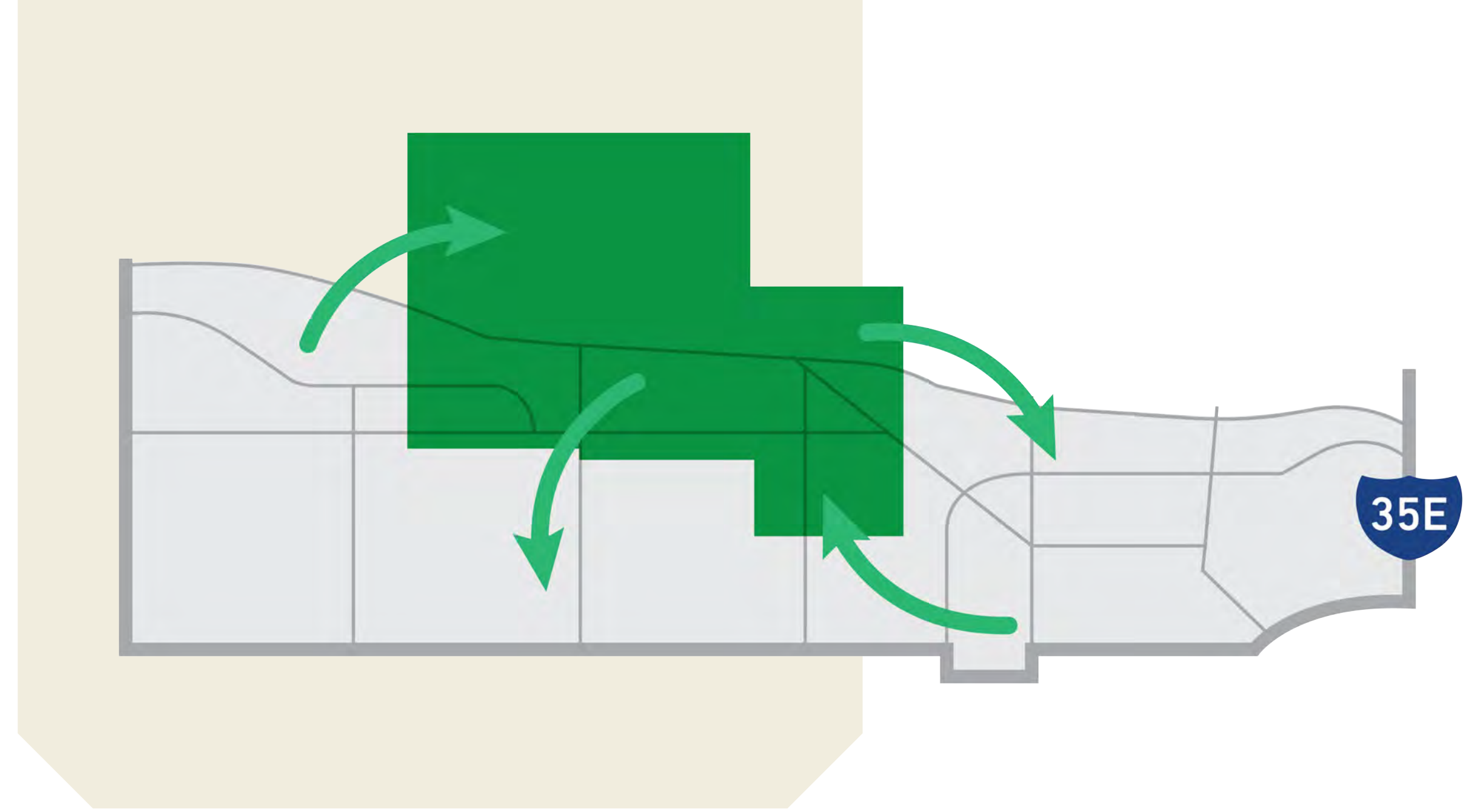


- develop farm plaza
- establish gardens in field 2
- plant fruit tree orchard in SE
- bees

YEAR 4

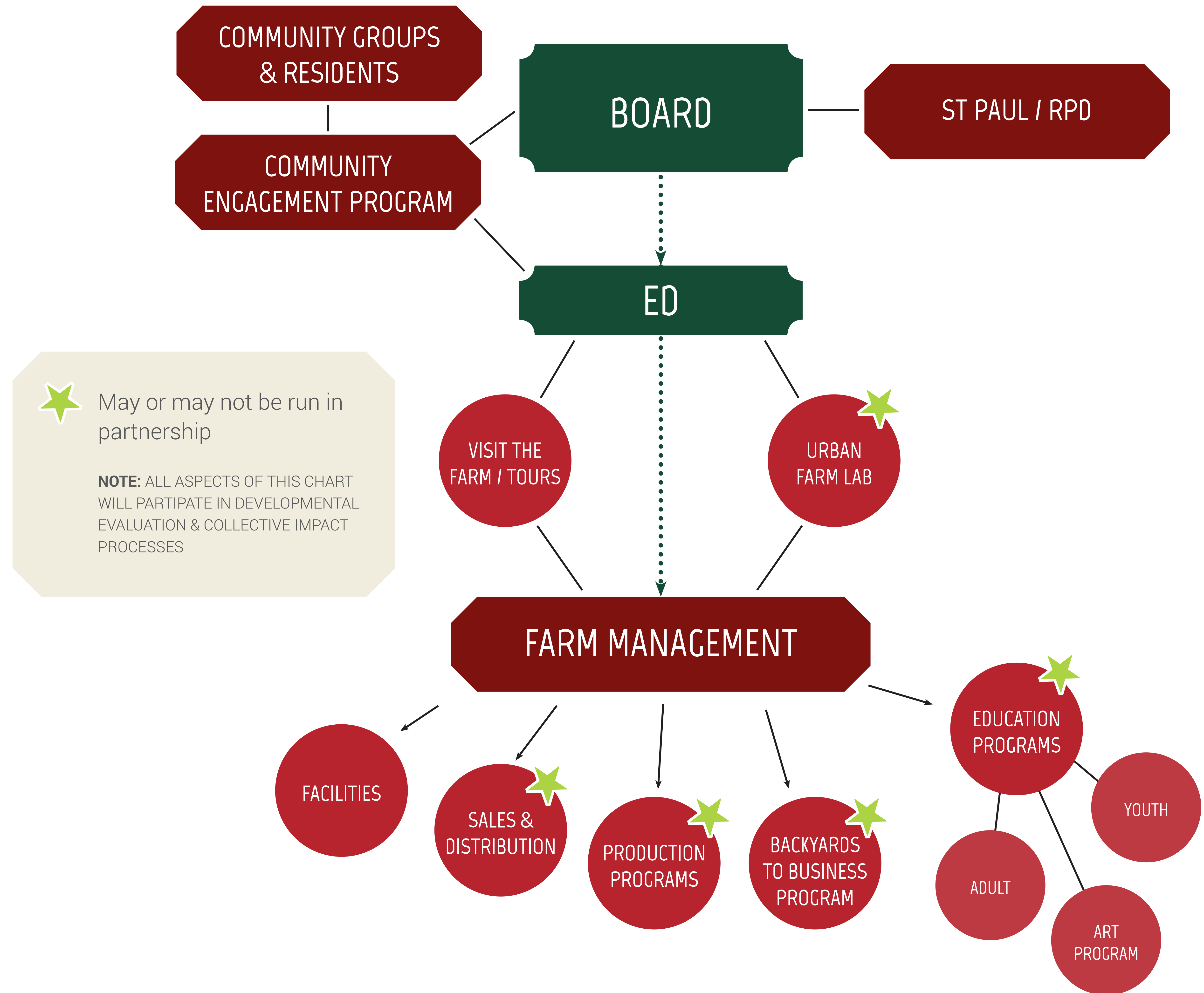


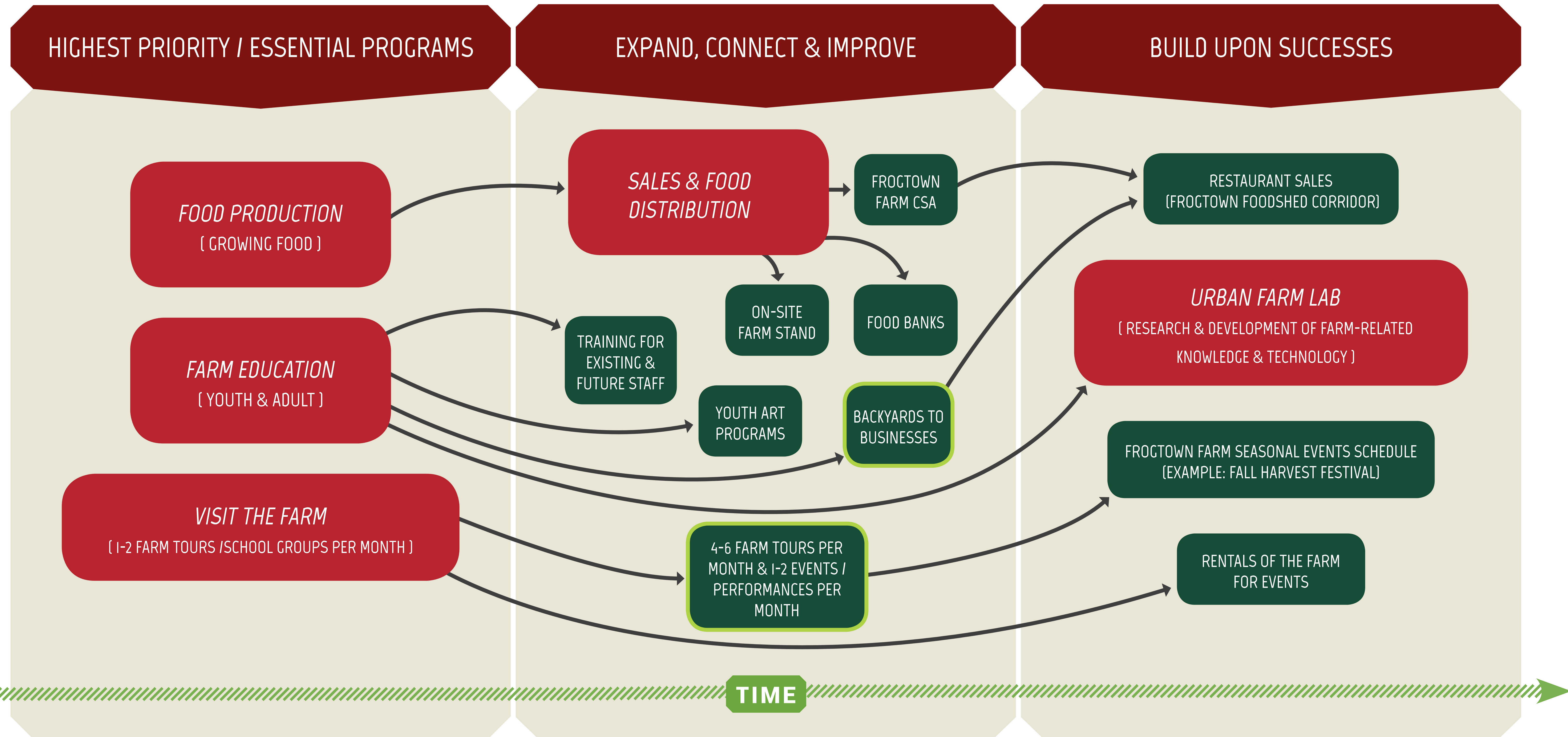
- build farmhouse / community center
- all fields in production



DESCRIPTION

The Farm is a platform for a city- and region-wide agricultural and gardening programs that operate at the site, creating a network for exchange of food, knowledge, ideas and culture. The FrogTown Farm Hub boosts community assets by providing an agricultural campus where existing initiatives and programs and partner with FrogTown. This programming approach would create partnerships with a CSA to grow food at the site, a marketing organization to sell it, educational organizations to run programs and classes, farmer associations to train new farmers, and academic and technical organizations to perform research. A community center at the heart of the Farm serves as the hearth where conversations between the neighborhood and partner organizations take place.





The Farm is a platform for a city- and region-wide agricultural and gardening programs that operate at the site, creating a network for exchange of food, knowledge, ideas and culture. Rather than starting up a full complement of new programs and duplicating others' efforts, the Frogtown Farm Hub boosts community assets by providing an agricultural campus in Frogtown for existing initiatives and programs. This programming approach would create partnerships with a CSA to grow food at the site, a marketing organization to sell it, educational organizations to run programs and classes, farmer associations to train new farmers, and academic and technical organizations to perform research. A community center at the heart of the Farm serves as the hearth where conversations between the neighborhood and partner organizations take place.

COMMUNITY PARTNER SUGGESTIONS FOR EACH PROGRAM:

1. HAFA, Stone's Throw, Minnesota Food Association
2. Urban Roots, Youth Farm&Market (Youth program); Permaculture Research Institute (Adult program and Backyards to Businesses)
3. Hmong American Farmers Association, Stone's Throw, Eggplant Garden Store (potential partner for a staffed farm stand that also sells urban gardening supplies)
4. Frogtown Farm should do this itself
5. UMN, Macalester, Dunwoody, Science Museum