

WELCOME

MONTREAL AVENUE Paving Project



Neighborhood Meeting
Barb Mundahl – Project Engineer

PROJECT SCHEDULE

- ◉ Information Meeting
- ◉ Only one informational meeting will be held, unless we have issues to resolve.
- ◉ Design Spring of 2013
- ◉ City Council Approval/Public Hearing is June 5, 2013.
- ◉ Start Construction Summer 2013
- ◉ End Construction Fall 2014

HISTORY

- ◉ Montreal Avenue was originally paved in 1930.
- ◉ Concrete curb and gutter was installed in the 1960's.
- ◉ The segment between St. Paul Avenue and Fairview Avenue was paved in 1961.
- ◉ The segment between Fairview and Snelling was paved in 1963.
- ◉ The current Pavement Condition Index (PCI) rating is 38 out of 100.



STREET WIDTH

- ◉Streets will be reconstructed near the existing width.
- ◉We do not intend to make changes to current parking regulations..

PROJECT INCLUDES:

- ◉ Concrete Curb and Gutter
- ◉ New Asphalt Street Pavement
- ◉ Concrete Driveway Aprons
- ◉ Street Lighting
- ◉ Concrete Outwalks
- ◉ Sodded Boulevards
- ◉ Removal of all Ash trees, dead trees and stumps
- ◉ Tree Planting
- ◉ Utility Upgrades

STANDARD CONCRETE CURB AND GUTTER



CATCH BASINS



ADA COMPLIANT PEDESTRIAN RAMPS



CONCRETE DRIVEWAY APRONS WITH 4' FLARES



CONCRETE OUTWALKS



CARRIAGE WALKS



OFFSET OUTWALK



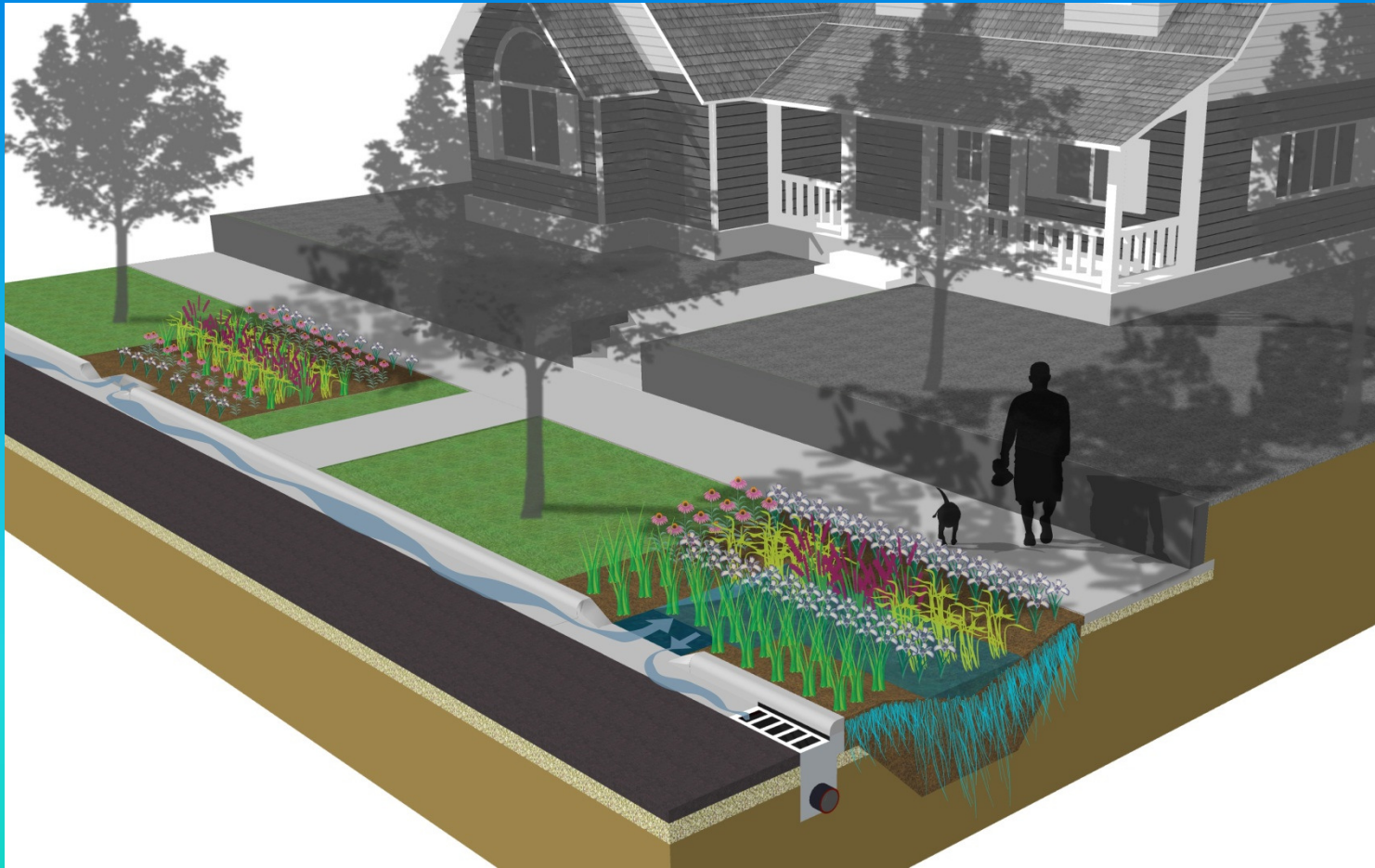
GRADE AND SOD BOULEVARDS



EXISTING BOULEVARD GARDENS



RAIN GARDENS



- The City of Saint Paul is partnering with Capital Region Watershed District to offer boulevard rain gardens in this project area.

RAIN GARDENS

- ◉ The City will excavate the garden, install the curb cut and provide topsoil and mulch for a rain garden if the property owner requests it.
- ◉ Capital Region Watershed District will supply plants and design assistance.
- ◉ The City will NOT excavate within the drip line of an existing tree.
- ◉ Please contact me if you are interested in installing a rain garden.



A RAIN GARDEN
DOES REQUIRE SOME
EXTRA
MAINTENANCE
INITIALLY,
INCLUDING EXTRA
WATERING AND
WEEDING FOR THE
FIRST 2-3 YEARS

SIDE BOULEVARD RAIN GARDEN PLANTED IN 2012



**BOULEVARD RAIN GARDEN
COMO NEIGHBORHOOD, 2009
PLANTED IN 2006**



NEW LANTERN STYLE STREET LIGHTS



EXISTING WOOD POLE STREET LIGHTS



BOULEVARD TREES





EMERALD ASH BORER



CONSTRUCTION

- ◉ What's it like to live through a project?
- ◉ Construction activity = noise, mess, inconvenience, dust or mud
- ◉ Road Closed, No Parking signs - Where do I park?
- ◉ Access for emergency vehicles to maintained at all times
- ◉ Work to start in summer 2013 and be completed in fall of 2013.

CONSTRUCTION

- ◎ Your street will be dug up numerous times. Our work is done in layers and often by different crews doing different types of work.
- ◎ We will NOT work on your block every day. There may be several days when no work is done in your block.
- ◎ Plan on 4 months of disruption.
- ◎ Alley access will be maintained at all times.

CONSTRUCTION

- ◉ All of the construction is done by private construction companies. They are very busy and this isn't their only project.
- ◉ Most of our work is weather dependent, rain will delay us.
- ◉ Contractors will work 5-6 days a week from 7am until 5 or 6pm.
- ◉ Following are some slides from the construction process.

XCEL GAS WORK



SIDEWALK BARRICADES



GAS MAIN AND SERVICE REPLACEMENT



LEAD WATER SERVICE REPLACEMENT



WATER SERVICE REPLACEMENT



LEAD REPLACEMENT



COPPER TAP INTO WATER MAIN



WATER MAIN REPLACEMENT



WATER MAIN REPLACEMENT



TEMPORARY WATER MAIN



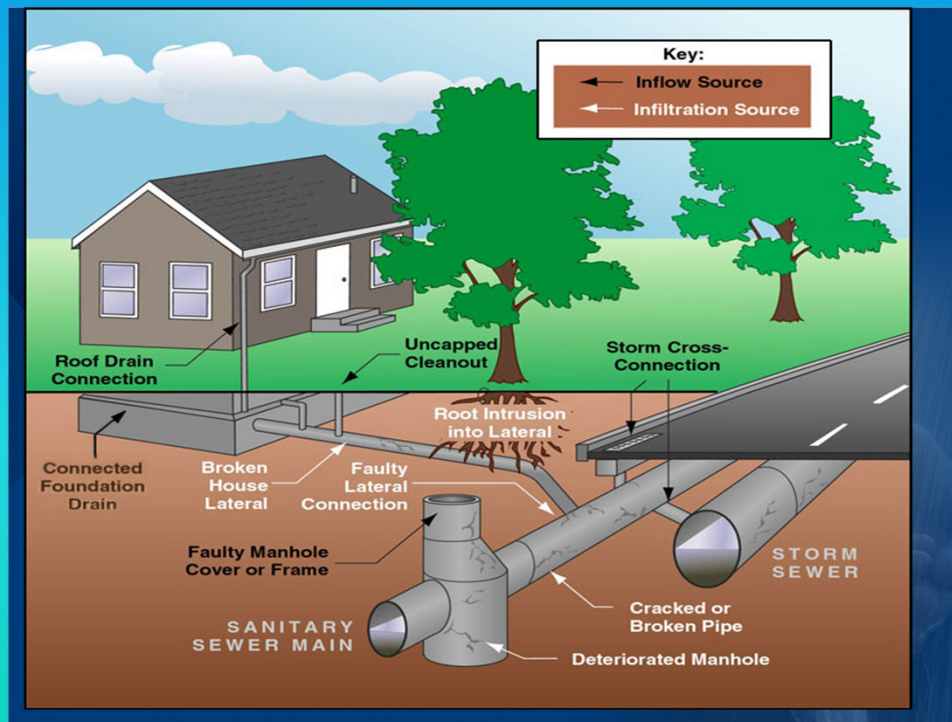
TEMPORARY CONNECTION



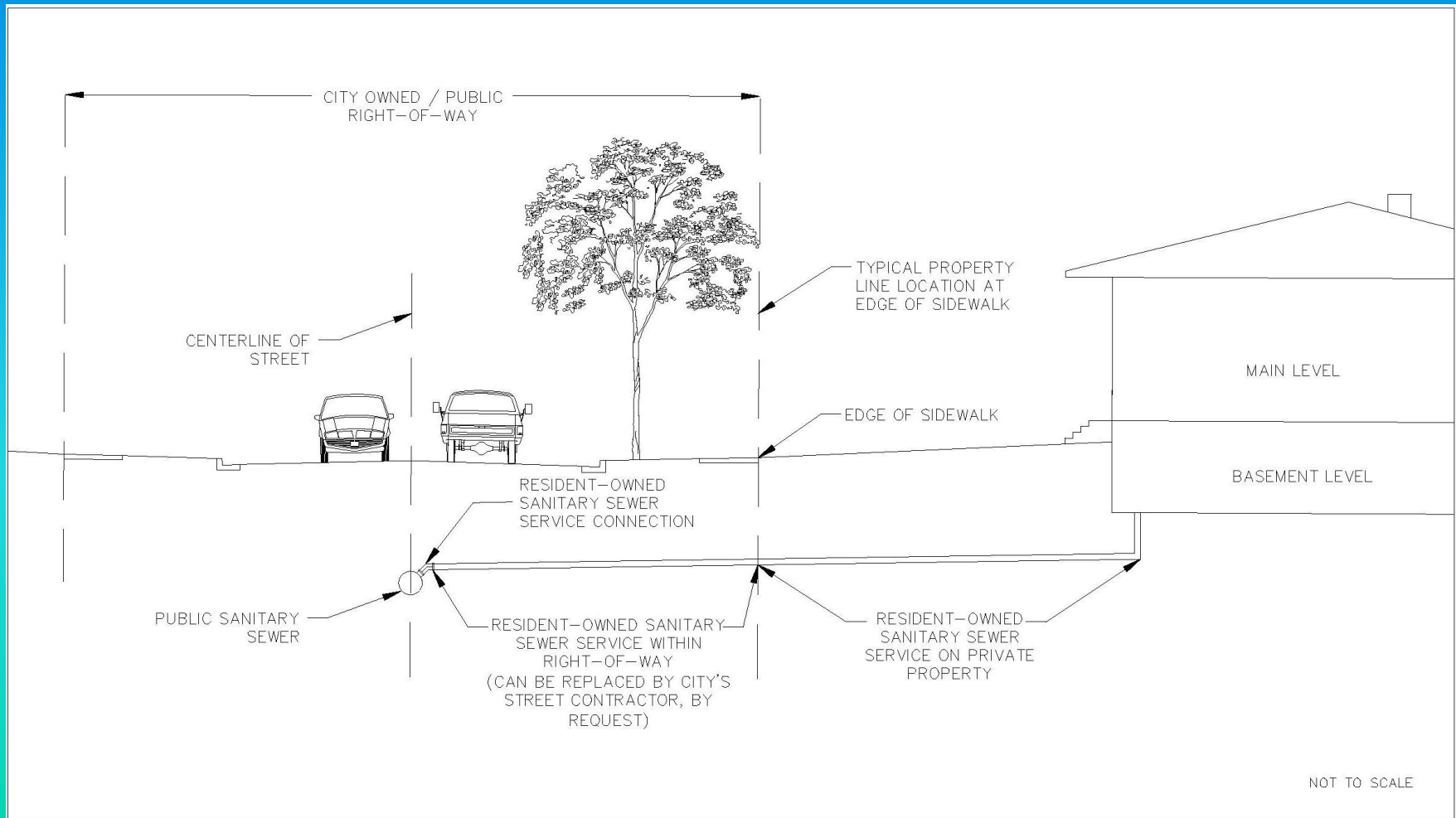
SEWER REPAIRS



SEWER SYSTEMS

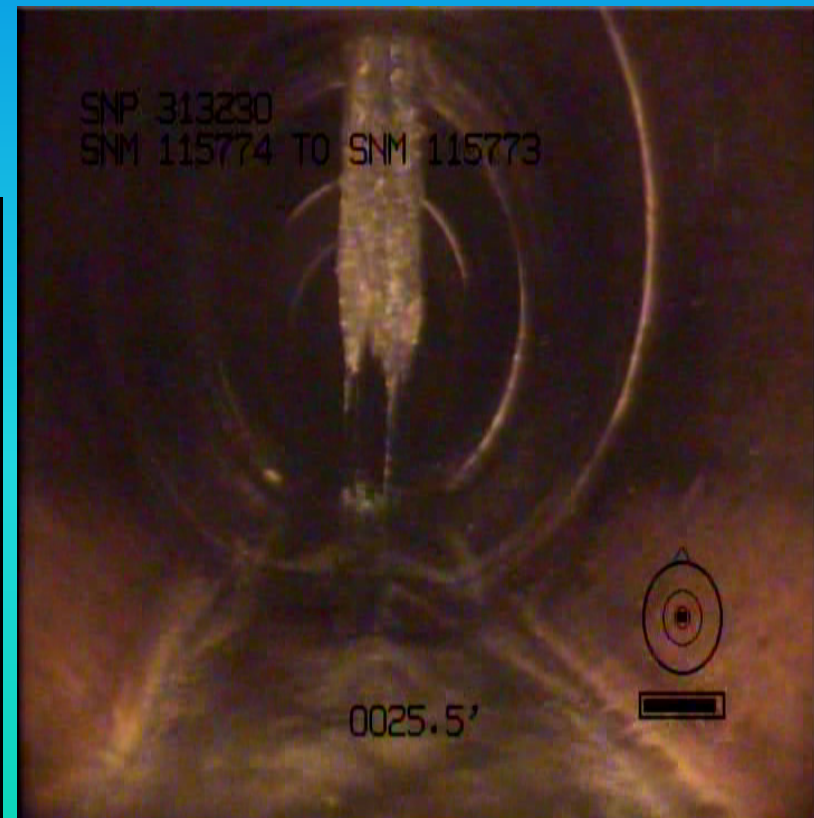


SANITARY SEWER SERVICE (TYPICAL)



COMMON SEWER PROBLEMS

- ◆ Dropped Connection to Main
- ◆ Broken Clay Pipe
- ◆ Root Intrusion



BENEFITS

of Repairing Sanitary Sewer Service

- ◆ **Extend System Service Life**
- ◆ **Health & Safety Issues**
- ◆ **Reduce Risk of:**
 - Sewer Backups
 - Sinkholes
 - Rodent Access
- ◆ **Cheaper during construction:**
 - fixed rate
 - don't have to pay for street restoration
 - 20 years to pay



WARNING SIGNS OF A DEFECTIVE SEWER SERVICE

- Does your drain run slowly? Or gurgle?
- Do you have sewer odors?
- Do you know where your sewer service runs?
- Are there bushes or trees planted over it?
- Has your sewer line ever been cleaned and inspected?
- Do you have a garbage disposal and use it for everything?
- Sinkhole or Depression near your Building, Blvd or Street?

INFILTRATION TRENCHES



INFILTRATION TRENCHES

- ◉ An Infiltration Trench is an area below the surface where storm water runoff is treated and allowed to percolate back into the ground water.
- ◉ Overflow pipes are installed in the trench for larger rain events.
- ◉ The City will be constructing one infiltration trench by Highland Park Middle School between Snelling and Macalester.

OVERFLOW PIPES IN INFILTRATION TRENCH



ROADWAY CONSTRUCTION



MUD



SUBGRADE PREPARATION



PLACEMENT OF CLASS 5



PLACING CURB



FINAL GRADING



GRADING BOULEVARDS



PLACING ASPHALT WEAR COURSE



SAW AND SEAL JOINTS



PROJECT FUNDING

- ◉ 75% Street Improvement Bonds (repaid by Property Taxes)
- ◉ 25% Assessment to Property Owners
- ◉ The 2013 Assessment rates are
 - \$51.37 per Linear Foot of Frontage for Street Paving
 - \$7.87 per Linear Foot of Frontage for Street Lighting
 - Total Assessment = \$59.24 per Linear Foot of Frontage

ASSESSMENT INFORMATION

- Assessments approved Fall of 2013
- Bill sent, 30 days to pay to avoid interest.
- If not fully paid, automatically goes on to property taxes at the end of the year.
- Paid over 20 years with simple interest
- Corner residential lots - assessed for short side
- Senior Citizen deferment
- View / Pay assessment at:
www.stpaul.gov/assessments

CONSTRUCTION INFORMATION

- Letter prior to start of construction.
Keep this one for names and numbers.
- A flyer handed out a week before we start construction in your block. Check front door for flyers. 3 flyers during the course of construction.
- Public Works Inspector on site.
- Weekly updates available at 266-ROAD.
- Web Page www.stpaul.gov then click “Government”, then “Public Works”, then “Street Engineering and Construction” then “Construction and Design” from the list on left side.

THANKS FOR ATTENDING!

CONTACT NUMBERS

- ◉ Project Engineer – Barb Mundahl, 651-266-6112
- ◉ Street Lighting – Sonja Piper, 651-266-6256
- ◉ Traffic – Monica Beeman, 651-266-6214
- ◉ Sewers – Aaron Hass, 651-266-6171
- ◉ Xcel Energy – Mike Madigan, 651-265-7068
- ◉ Saint Paul Regional Water Services – Service Desk, 651-266-6270
- ◉ Forestry – Greg Reese, 651-632-2430
- ◉ Real Estate Section – Lynn Moser, 651-266-8858