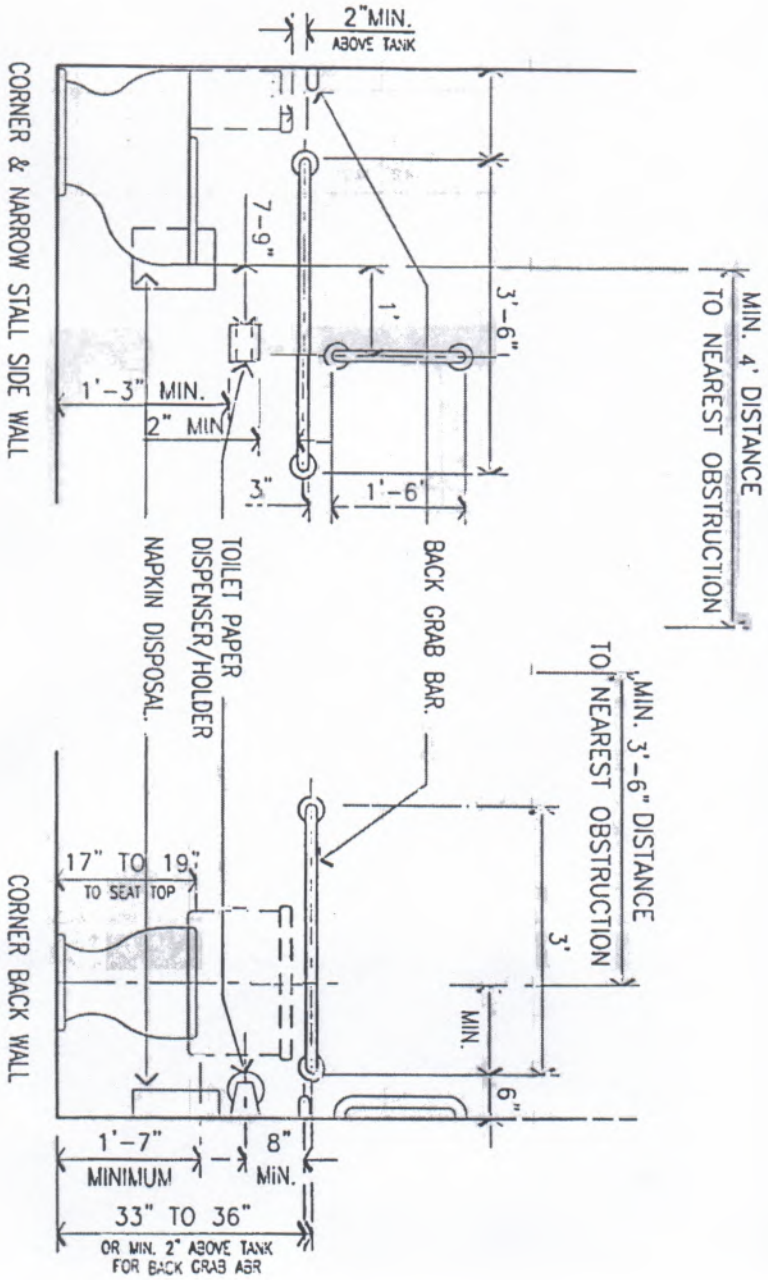


NOTES:
 NOTE THE TWO CONFIGURATIONS
 SHOWN, CORNER WITH TANK &
 NARROW STALL WITHOUT TANK.

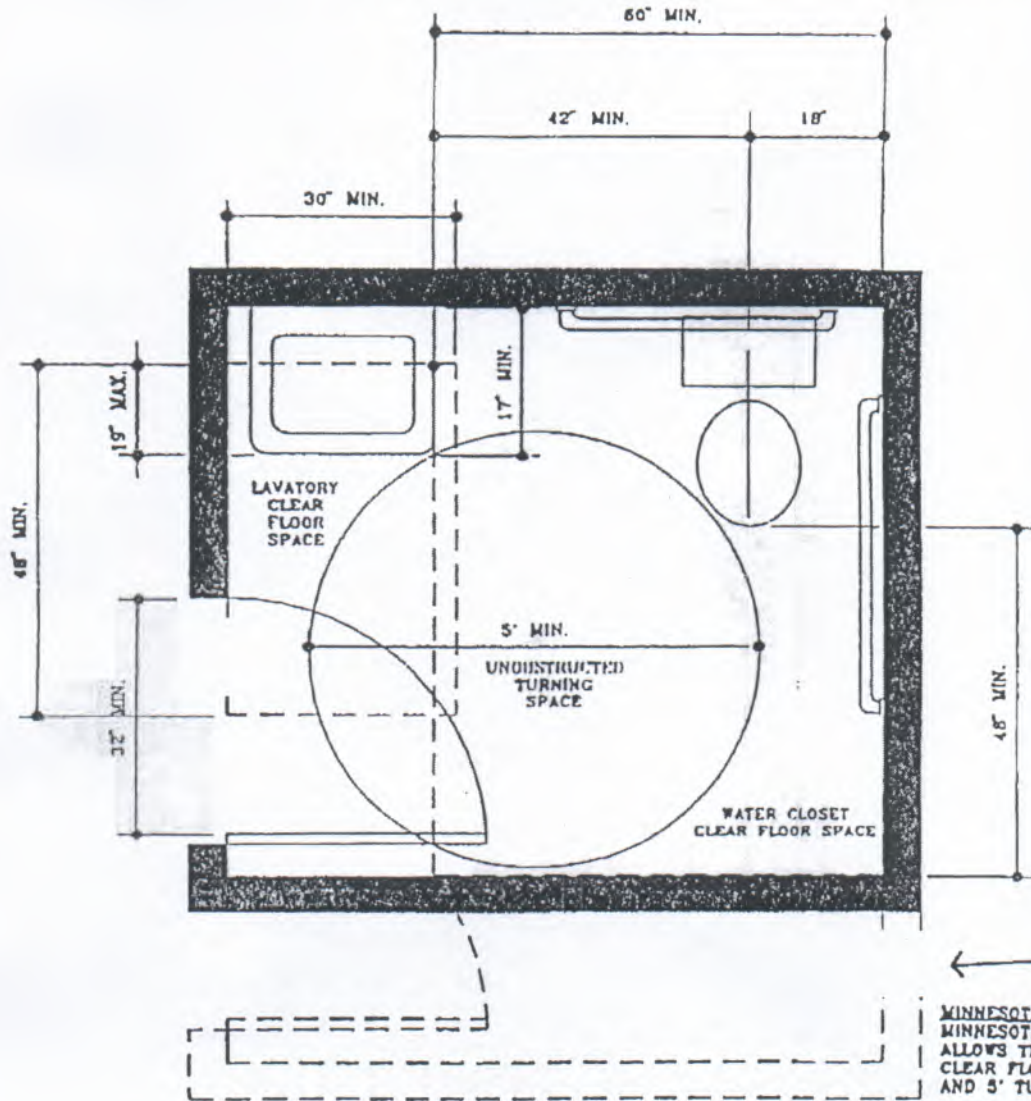
BACKWALL BAR REQUIRED AT
 CORNER INSTALLATIONS ONLY



WATER CLOSET AND ACCESSORY LAYOUTS FOR ACCESSIBLE TOILET ROOMS

MINIMUM CLEAR FLOOR SPACE AT ACCESSIBLE TOILET ROOMS

MINNESOTA STATE BUILDING CODE - MINNESOTA RULES CHAPTER 1340
AMERICANS WITH DISABILITIES ACT ACCESSIBILITY GUIDELINES



MINNESOTA STATE BUILDING CODE
MINNESOTA RULES CHAPTER 1340
ALLOWS THE DOOR SWING TO OVERLAP
CLEAR FLOOR SPACE AT FIXTURES
AND 5' TURNING RADIUS

THE AMERICANS WITH DISABILITIES ACT
ACCESSIBILITY GUIDELINES ALLOWS THE
DOOR SWING TO OVERLAP THE 5' TURNING
RADIUS, BUT DOES NOT ALLOW THE DOOR
SWING TO OVERLAP THE CLEAR FLOOR
SPACE AT FIXTURES

NOTES:

AN UNOBSTRUCTED TURNING SPACE SHALL BE PROVIDED WITHIN THE ACCESSIBLE TOILET ROOM. AN UNOBSTRUCTED TURNING SPACE FOR A WHEELCHAIR TO MAKE A 180-DEGREE TURN IS A CLEAR SPACE OF 60" IN DIAMETER OR A T-SHAPED SPACE (REFER TO ADAAG Fig. 3(b))

A CLEAR FLOOR SPACE OF 30" X 48" SHALL BE PROVIDED IN FRONT OF THE LAVATORY TO ALLOW FOR A FORWARD APPROACH. SUCH CLEAR FLOOR SPACE SHALL EXTEND A MAXIMUM OF 19" UNDERNEATH THE LAVATORY.

CLEAR FLOOR SPACE FOR WATER CLOSETS SHALL BE 48" IN FRONT OF THE WATER CLOSET AND 42" FROM THE CENTER LINE OF THE WATER CLOSET ON THE SIDE NOT ADJACENT TO THE WALL.

THE CLEAR FLOOR SPACE AT FIXTURES AND CONTROLS, THE ACCESSIBLE ROUTE, AND THE UNOBSTRUCTED TURNING SPACE MAY OVERLAP.