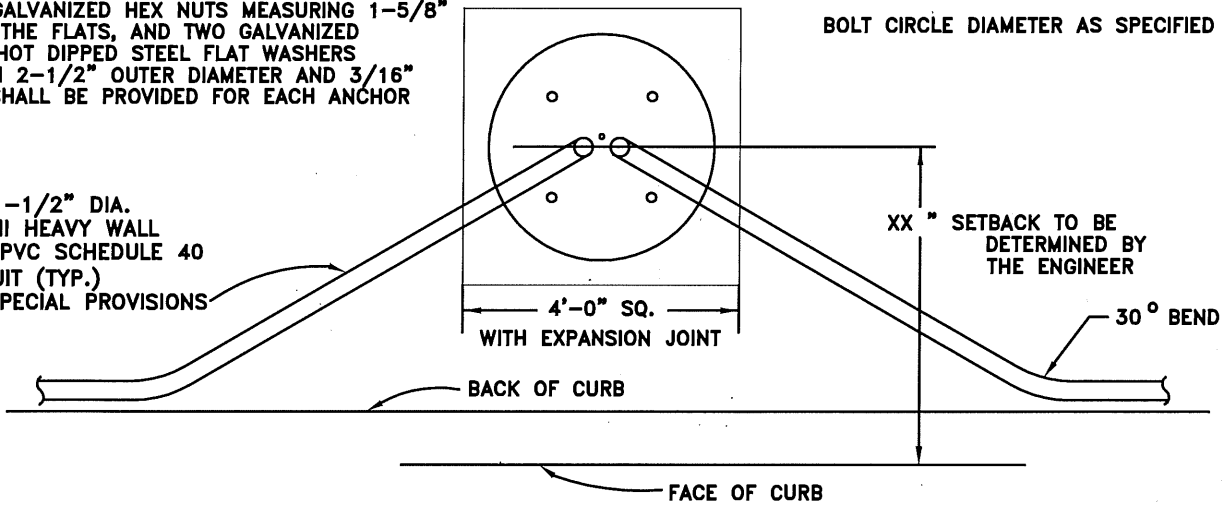


THE TOP 12 INCHES OF THE 1" X 40" ANCHOR BOLTS SHALL BE HOT DIP GALVANIZED. ANCHOR BOLTS SHALL BE THREADED A MINIMUM OF SIX INCHES WITH UNC 8 THREAD. TWO, ONE INCH UNC 8 GALVANIZED HEX NUTS MEASURING 1-5/8" ACROSS THE FLATS, AND TWO GALVANIZED PLATED HOT DIPPED STEEL FLAT WASHERS (MINIMUM 2-1/2" OUTER DIAMETER AND 3/16" THICK) SHALL BE PROVIDED FOR EACH ANCHOR BOLT.

TOP VIEW

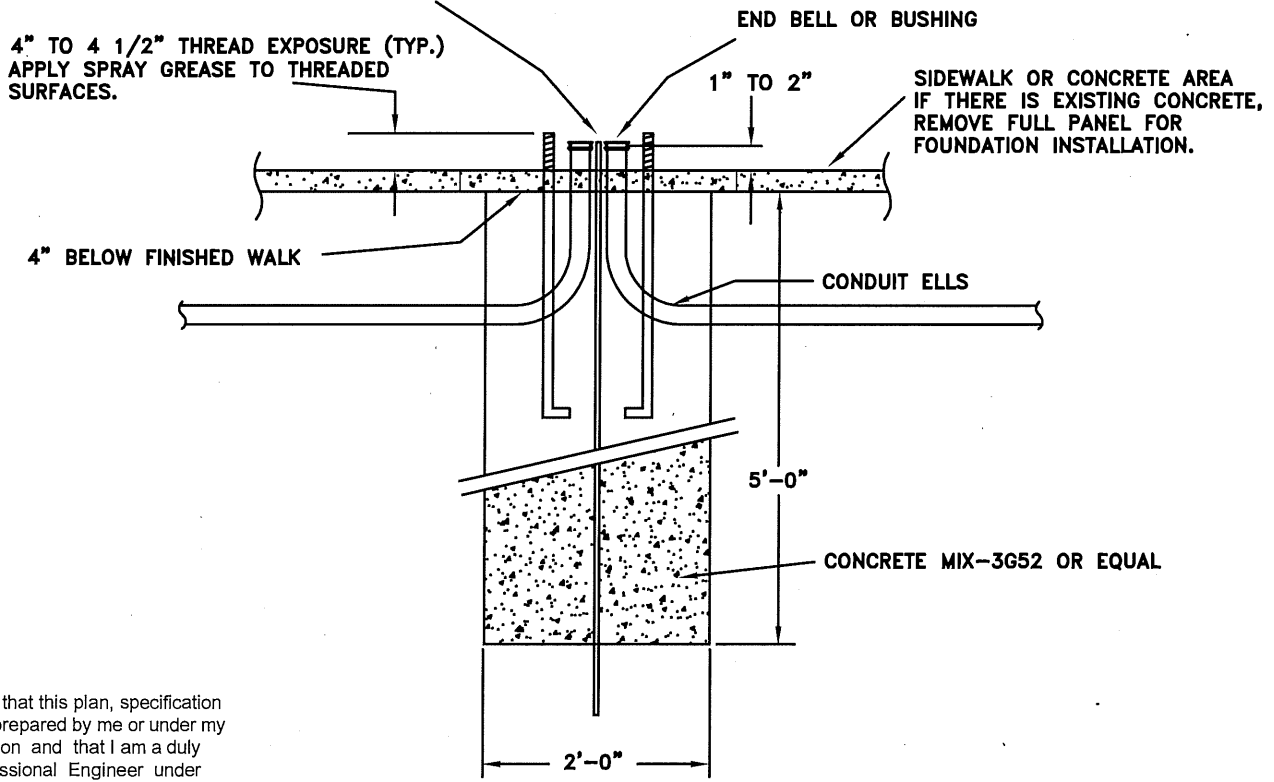


CONDUIT:

- MIN. 1-1/2" DIA.
- TYPE II HEAVY WALL RIGID PVC SCHEDULE 40 CONDUIT (TYP.)
- SEE SPECIAL PROVISIONS

GROUND ROD TO BE INSTALLED AS SHOWN OR AS DIRECTED BY THE ENGINEER (5/8" DIAMETER).

SIDE VIEW



I hereby certify that this plan, specification or report was prepared by me or under my direct supervision and that I am a duly Licensed Professional Engineer under the laws of the State of Minnesota

Brian P. Vitek
 Brian P. Vitek

Date 12/3/15 Lic. No. 40444

APPROVED 12-3-15
J.P. [Signature]
 CITY ENGINEER

CITY OF ST. PAUL
 DEPARTMENT OF PUBLIC WORKS
 LIGHT STANDARD FOOTING DETAIL
 CONCRETE SURFACE

Date of Revision	Standard Plate No.
DEC 2015	5009C