

WELCOME!

Pedro Park Design Open House

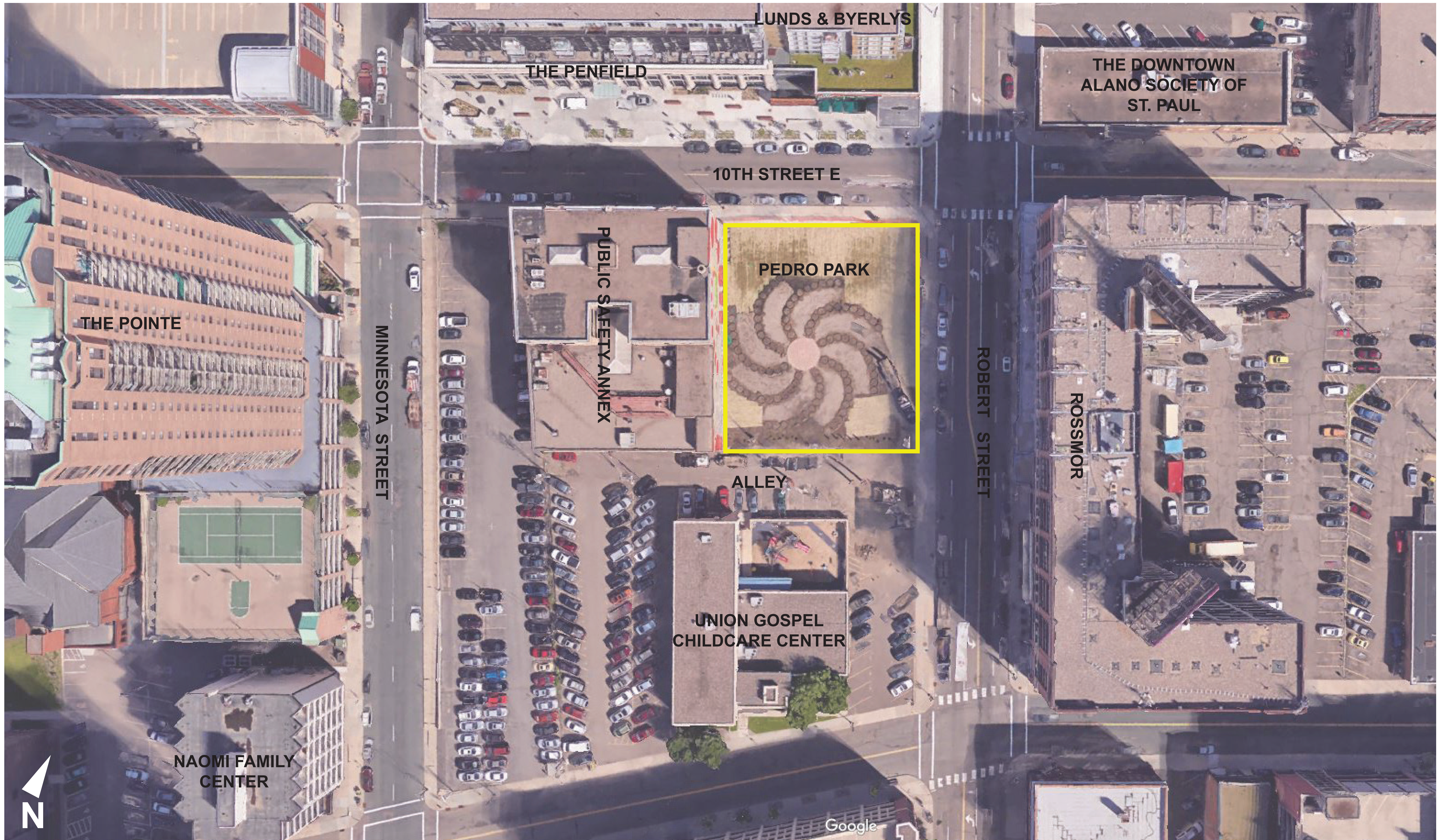


City of Saint Paul Departments of
Planning and Economic Development & Parks and Recreation



PEDRO PARK

www.stpaul.gov/pedropark



LUNDS & BYERLYS

THE PENFIELD

THE DOWNTOWN
ALANO SOCIETY OF
ST. PAUL

10TH STREET E

PEDRO PARK

PUBLIC SAFETY ANNEX

ROBERT STREET

ROSSMOR

THE POINTE

MINNESOTA STREET

ALLEY

UNION GOSPEL
CHILDCARE CENTER

NAOMI FAMILY
CENTER

Google



EXISTING SITE CONTEXT

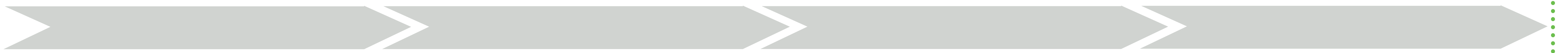
PEDRO PARK

OUTREACH AND ENGAGEMENT

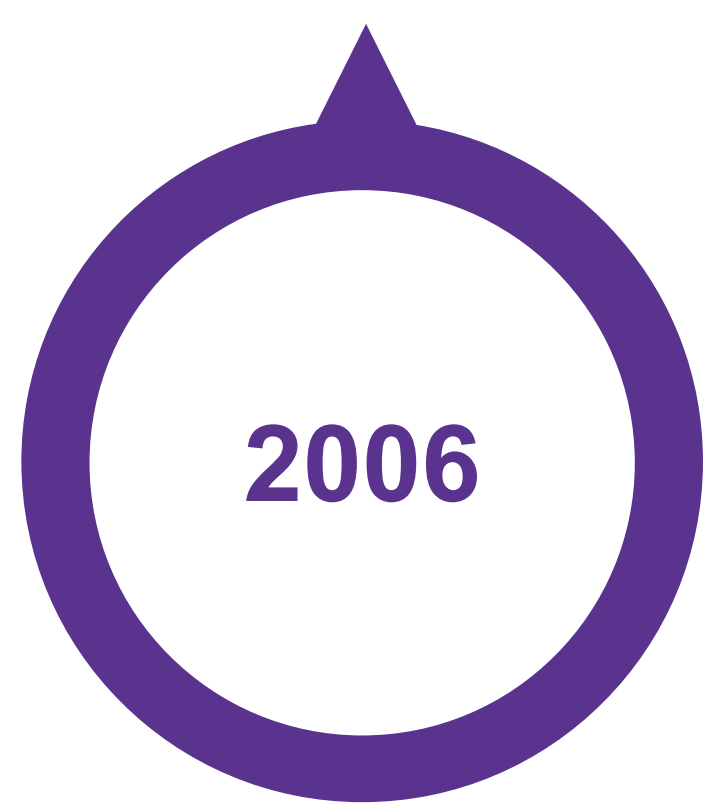


PROJECT BACKGROUND

Today is a part of more than *13 years* in the making of this downtown place, a **PARK** that the community is passionate about



Fitzgerald Park Precinct Plan
Identifies need for park space downtown



Design Advisory Committee
Master Plan study for phased development



Pedro Family Donation
Pedro Luggage site donated to City to be developed as a park

Public Safety Annex (PSA) Building
City requests proposals for potential development



Capitol Improvement Budget (CIB) Proposals for Park Funding
• Requests unsuccessful



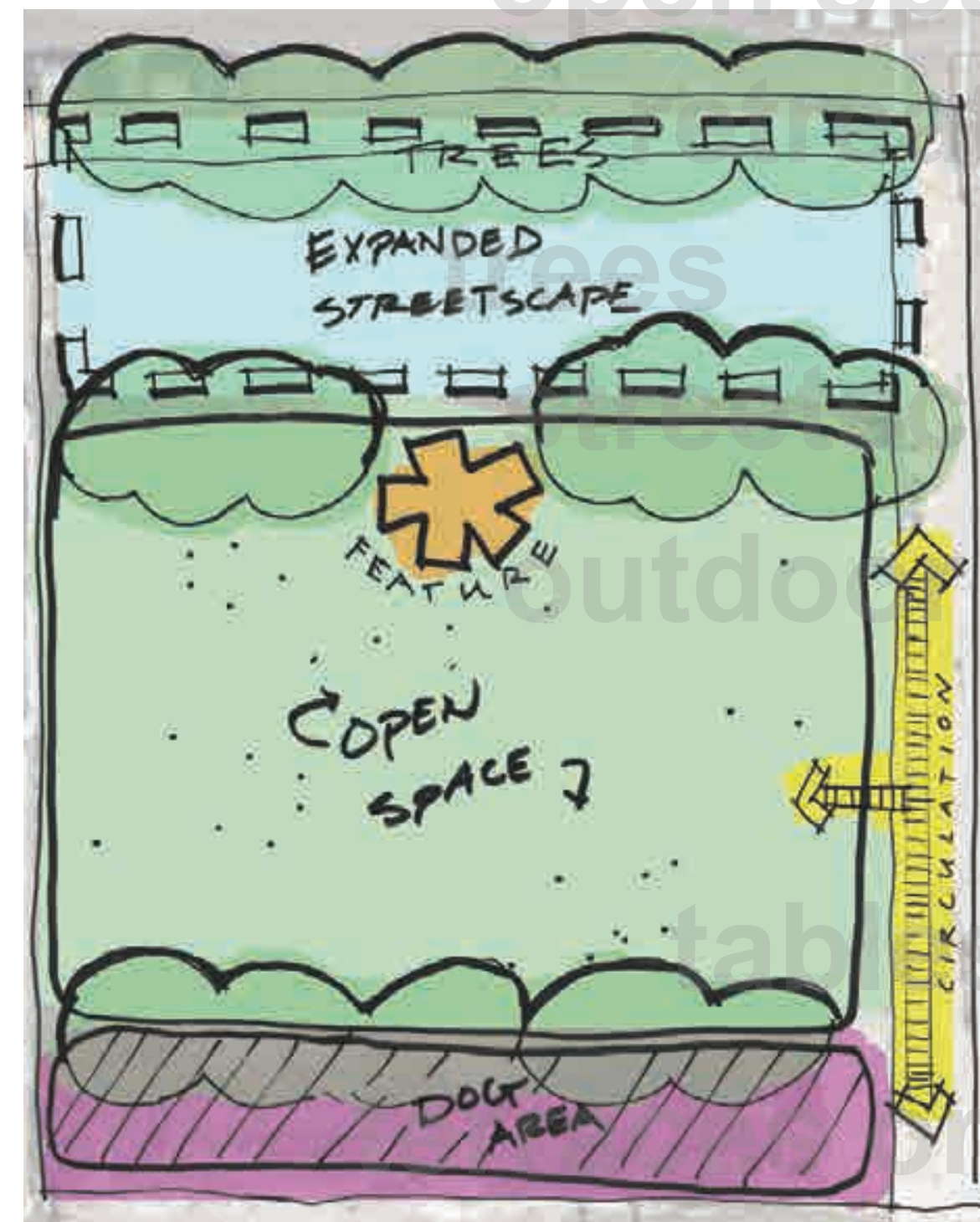
Urban Flower Field
• Temporary art installation and park space created to activate the site

Housing & Redevelopment Authority (HRA)
• Tentative developer status to The Ackerberg Group
• Design Advisory Committee process for park site
• City Council and HRA approve vacation of PSA and subsequent redevelopment



Final Design & Construction
Park construction is expected to begin Summer 2019





open space

art or feature

space

shade

playspace

winter interest

shape and edges

fountain

outdoor seating areas

water element

event and performance space

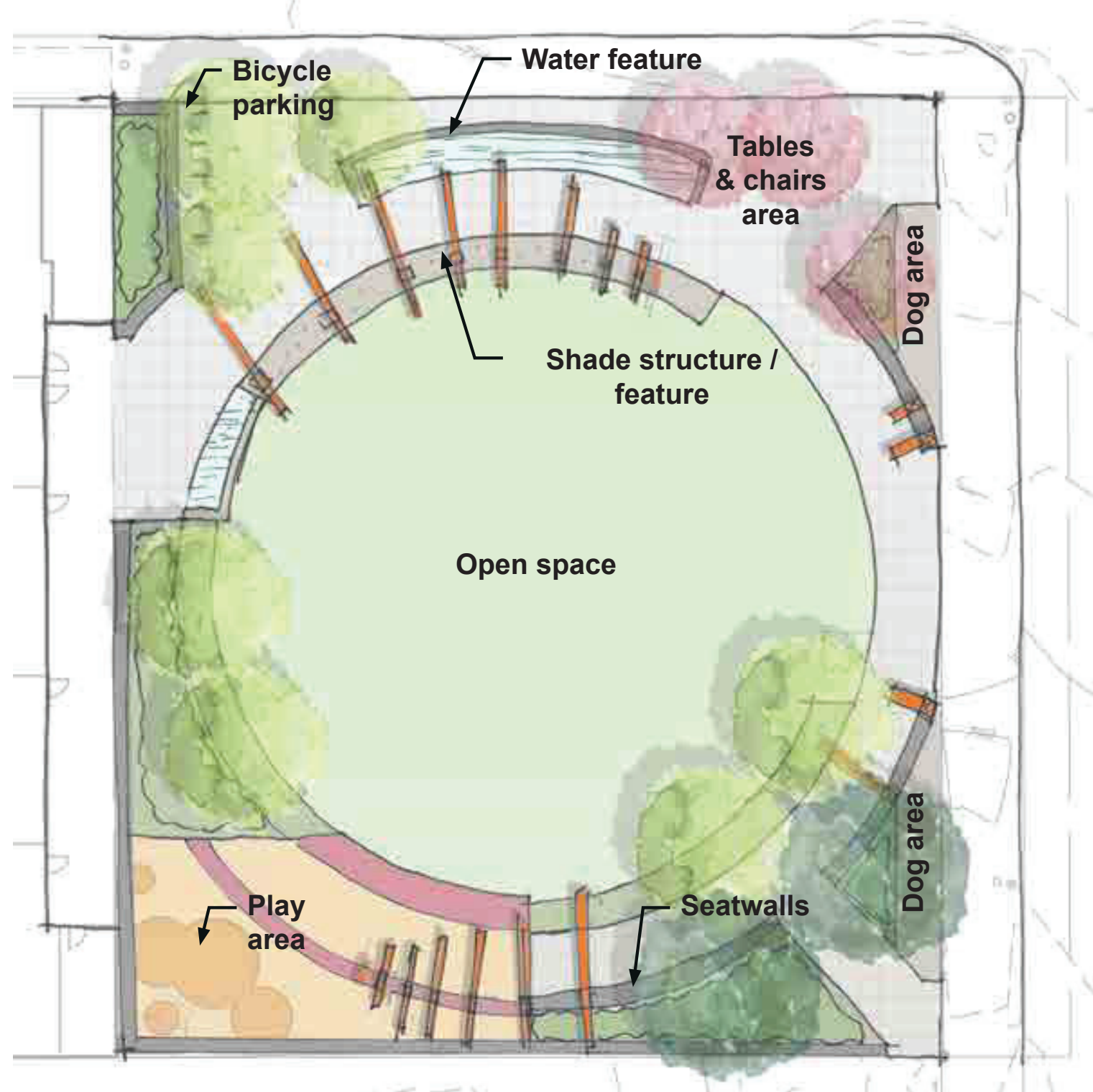
tables and benches

hillside seating

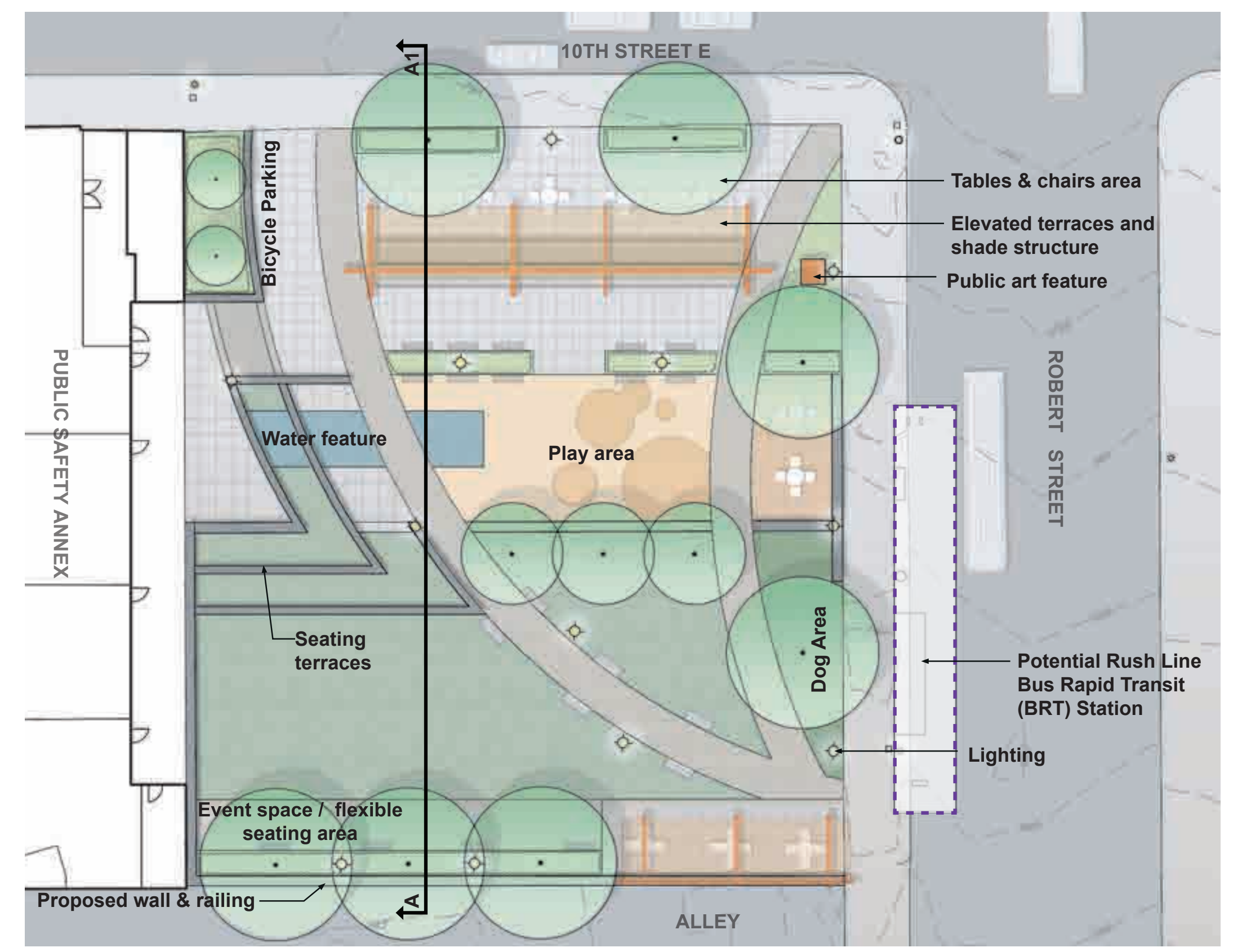
dog run



Concepts from Design Advisory Committee Meetings: May - June 2018



Concept from HRA and City Council Meeting: October 2018



PEDRO PARK EXPANSION CONCEPT

The current design concept for Pedro Park allows the park to adapt to future expansion opportunities IF they become available in a future phase.

*Note: There is not currently funding or property available for park expansion.

This park expansion concept study addresses the following:

1. Potential expansion space provides opportunities for additional park programming.
2. Planning for connectedness and a continuous park
3. Existing Grades: Topographic changes that add interesting opportunities for enhancing the park experience



ADVANCED DESIGN CONCEPT

Concept Evolutions

A. Axial orientation from EW to NS to address future park expansion

B. Further engineering and grading to make the park fully accessible

C. Maximizing the public park space by developing the west edge and delineation of public and private

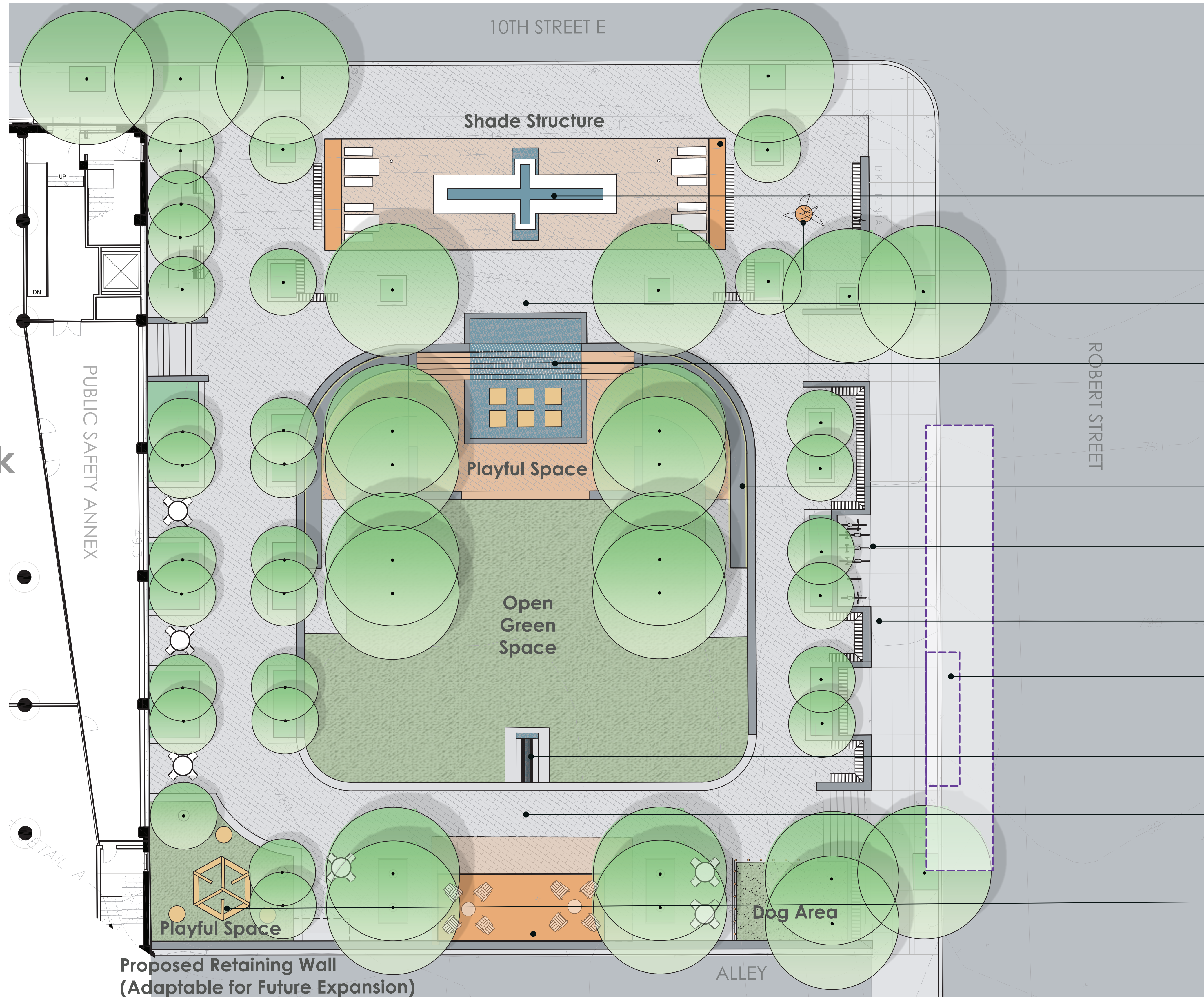
D. Activating the corner as an integral component of the design, a destination in the park and new expanded play opportunity

Concept Framework

Integrate Streetscape with Park Design
 Not Another Mears Park
 Residential
 Multi-functional
 Looking Forward: Future Legacy
 Capital City

Program

Open Green Space:
 Mid-Size Performance
 Variety of Rooms
 Water Feature
 Splash Pad
 Sun Protected Spaces: 2
 Dog Relief
 Play Space
 Art
 Garden Plantings
 BRT Considerations



Elevated Terrace & Shade Structures

“Community Table” Bench and Seating Area

Public Art

Event Space A

Primary Water Feature

Seating Terraces

Bike Parking

Integrated Street Scope

Future Rush Line Bus Rapid Transit (BRT) Station

Secondary Water Feature

Event Space B

Passive Playful Space

Park Shelter with Tables & Chairs

Proposed Retaining Wall (Adaptable for Future Expansion)





PARK EXPERIENCE

Animations

ANTICIPATED PROJECT SCHEDULE

TENTATIVE COMPLETION 2020

