

ADVANCED DESIGN CONCEPT

Concept Evolutions

- A. Axial orientation from EW to NS to address future park expansion
- B. Further engineering and grading to make the park fully accessible
- C. Maximizing the public park space by developing the west edge and delineation of public and private
- D. Activating the corner as an integral component of the design, a destination in the park and new expanded play opportunity

Concept Framework

Integrate Streetscape with Park Design
 Not Another Mears Park
 Residential
 Multi-functional
 Looking Forward: Future Legacy
 Capital City

Program

- Open Green Space:
 - Mid-Size Performance
 - Variety of Rooms
 - Water Feature
 - Splash Pad
- Sun Protected Spaces: 2
- Dog Relief
- Play Space
- Art
- Garden Plantings
- BRT Considerations



TELL US WHAT YOU THINK!

Too much hard surface. Not enough green.

A lawn is a sterile wasteland. Please consider pollinator friendly bee lawns and perennials

The Nicolett Mill tree fascio of last year tells us no birches!

All shelters will be relentlessly gang-tagged. They will need constant sandblasting/re-painting

Concern regarding location of BRT

NO TRANSIT!!! HeB!!!

More open green
 more dog space

LARGER DOG AREA I agree -

So many dogs use this area now. make bigger?

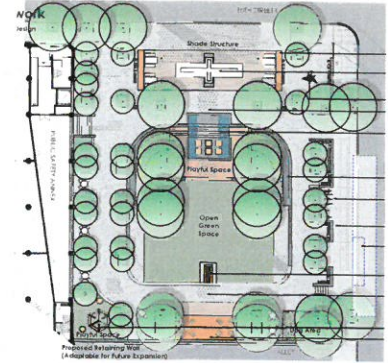
LOTS!

NO

CONCEPT DISCUSSION

1. What aspects of the current design concept do you like and why?

I like the green space & trees, downtown has so few trees.
I also like the lighting aspects for safety.



2. How do you see your representative group using the park space?

picnics, ~~also~~ playing in grass,

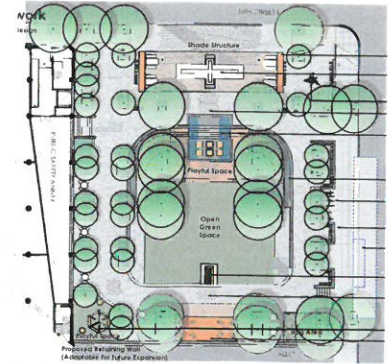
(I will miss the ability to sled in winter)

3. Other comments

Very concerned with safety / lots of concrete space for sleeping

CONCEPT DISCUSSION

1. What aspects of the current design concept do you like and why?



2. How do you see your representative group using the park space?

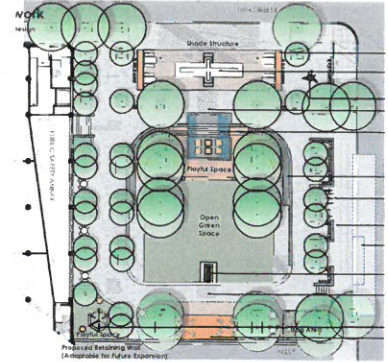
3. Other comments

Too much hard surface. Not enough green.



CONCEPT DISCUSSION

1. What aspects of the current design concept do you like and why?



2. How do you see your representative group using the park space?

3. Other comments *The bus/transit station is a terrible idea.*

We need to put as much pollinator habitat in this park as possible. Plant selection should not just be from MN (no swamp white oak, please) but from the Mississippi valley area. There are some remnant native plant communities in the area that are struggling to maintain themselves. They don't need foreign competition!

The DayCare Center
Should be put in the
bottom 2 floors of the Miami
Center and torn down. At
least give us $1/2$ of what
was promised.

Why waste our time if you
have no intention to listen to
what the neighborhood wants.

Overwhelmingly we support the
EXPANSION of Pedro Park.

My Comments :

- ~25 downtown residents attended
- One resident asked how many of them are against the lack of the full block park. Virtually ALL of those downtown residents raised their hands.

This is overwhelmingly short of what the Community wants. The design is nice and fine (minus the BRT stop), but it will not be a park ~~large~~ large enough to support the downtown residents. Let it be on record that the residents showed up to voice their opposition to a 1/4 block park. Thank you to the citizens who have fought hard for their neighborhood! Thank you to the city employees for the hard work.

My feedback on the proposed plan for Pedro Park:
Although a beautiful design, I feel:

It has way to many things to maintain
Water feature is unnecessary and again too much maintenance
Too many walls to welcome graffiti
Too many hidden places
It looks very cooperate. Not natural spaces

Although I understand the Ackerberg Group may contribute to the design and maintenance etc if that goes thru this plan is not a smart idea. I live downtown this plan will welcome trouble. It is proven in the other parks that the city staff can not maintain the parks appropriately.

Kellogg park: filthy, water feature was off all of last year, pergola has not been trimmed or maintained in years, smells like urine, bench with grafatti. Groups of drunks and drug users there all the time.

Mears Park: Unless an event is going on it is is undesirable other than to walk thru quickly, skateboarders, people sleeping and using the bandshell to charge phones, yell, drink and drugs. The residents maintain the gardens with out them it would be a mess.

Rice Park: We will see how that goes but in the past the city couldn't maintain that water feature, grass turned to dirt, filthy and again a hangout for trouble. The kids park by TPT, a resident had to clean that park last year, tents in the back, extremely filthy, overgrown, very scary at night as it is hidden, no upgrades.

More police resources will be used up on calls from yet another place for trouble. The best design is to keep it simple...Grass a few trees, lights. It is our brightest park with the sun. It is a nice safe place at the moment because of its openness.

I am an owner at [REDACTED] I would suggest you look at the police calls in all the parks, Pedro Park has the lowest...why? Because it is an open park. No crazy tables, walls, water features. outlets to charge your phones etc. it does not invite people to use it like their living room because it is simple. Many people enjoy the simplicity of it.

Do not put so many apparatuses in the new park it just does not make any sense at all. It looks like it should be an indoor mall.

Use this opportunity to create nice green space that can be managed. Let the sun shine on it, do not cover it at all for shade with the exception of a few trees.
Final: I am against the designs offered for Pedro Park.

1. Inadequate for dog owners.

2. Way too small

3.

put the RBT ideas
before the CRC Pa

neighborhood input -
prob best to move the
station \uparrow or \downarrow 1 block

I would like a bit more
green space - we have
so little of that here.

flowers! Trees
lots of green!

I am really interested in how the plantings are conceived of and implemented. I would like to get public updates and when input is allowed, I would like to give input.

- no office building.
desperately need more
park space in downtown
St. Paul

- please move the future
transit station to another
location nearby. Having
it at the park would
disrupt what the park &
green space is meant for

- I hope the park expands
into the parking lot next
door

No transit
station - unsafe
for kids, Ruins
feel of park
BAD IDEA

please don't turn this
mini park into a place
for homeless to sleep.

We asked for green space,
not this.

trees → great!

grass → great!

benches + roofs → NO

≡