

WELCOME!

Pedro Park Design Open House

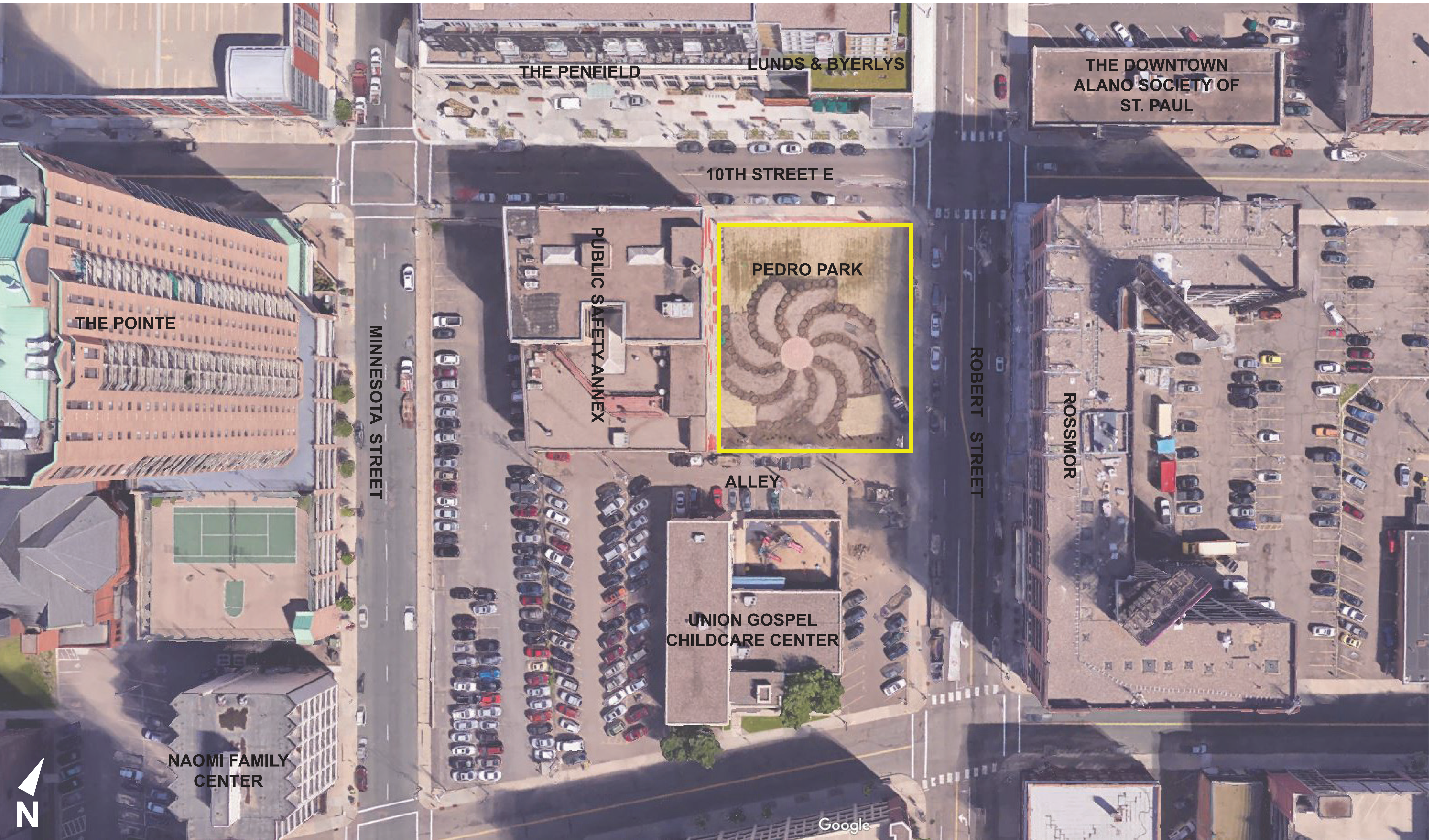


City of Saint Paul Departments of
Planning and Economic Development & Parks and Recreation



PEDRO PARK
Design Advisory Committee

www.stpaul.gov/pedropark



THE PENFIELD

LUNDS & BYERLYS

THE DOWNTOWN
ALANO SOCIETY OF
ST. PAUL

10TH STREET E

PUBLIC SAFETY ANNEX

PEDRO PARK

THE POINTE

MINNESOTA STREET

ROBERT STREET

ROSSMOR

ALLEY

UNION GOSPEL
CHILDCARE CENTER

NAOMI FAMILY
CENTER

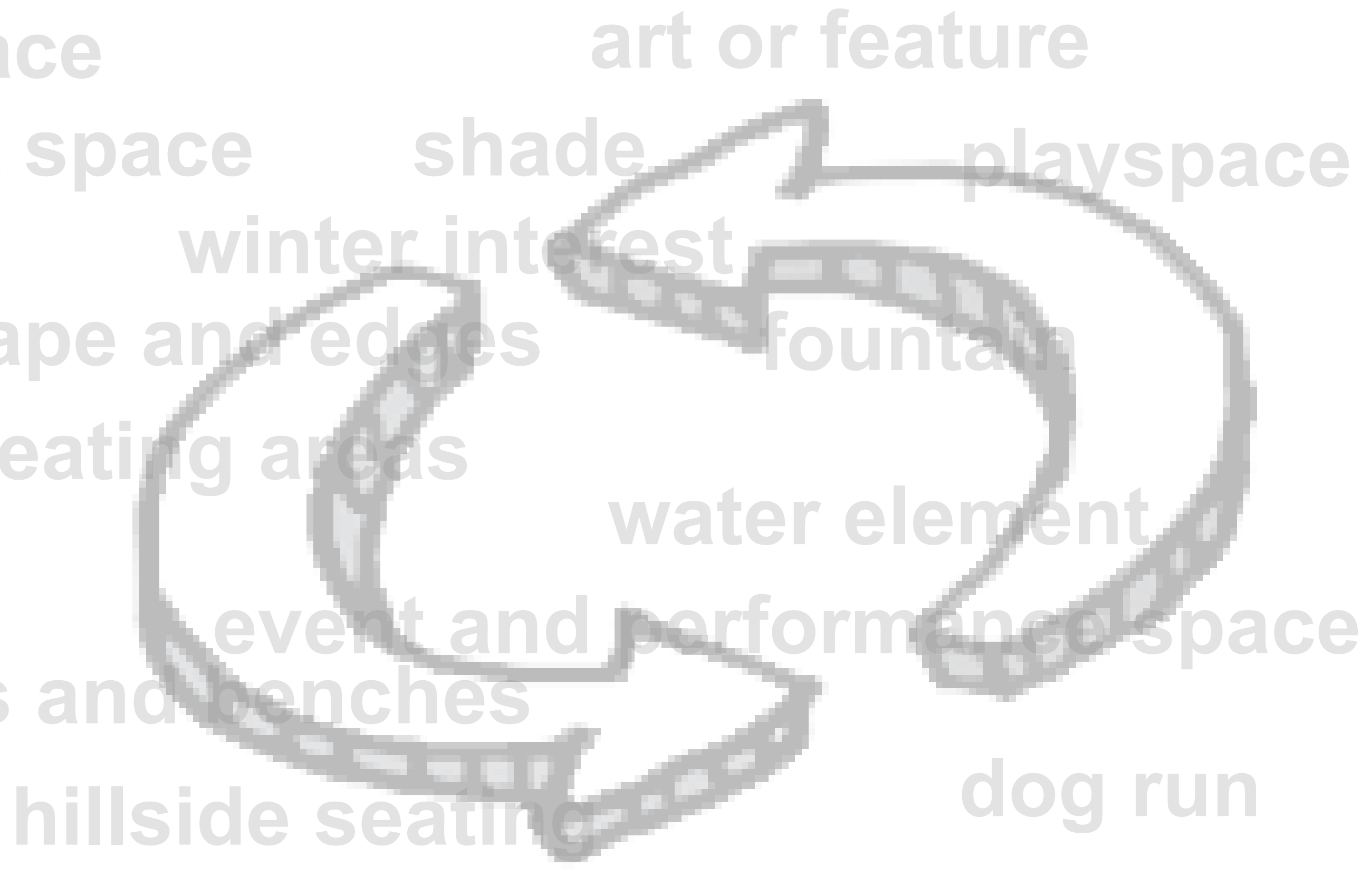
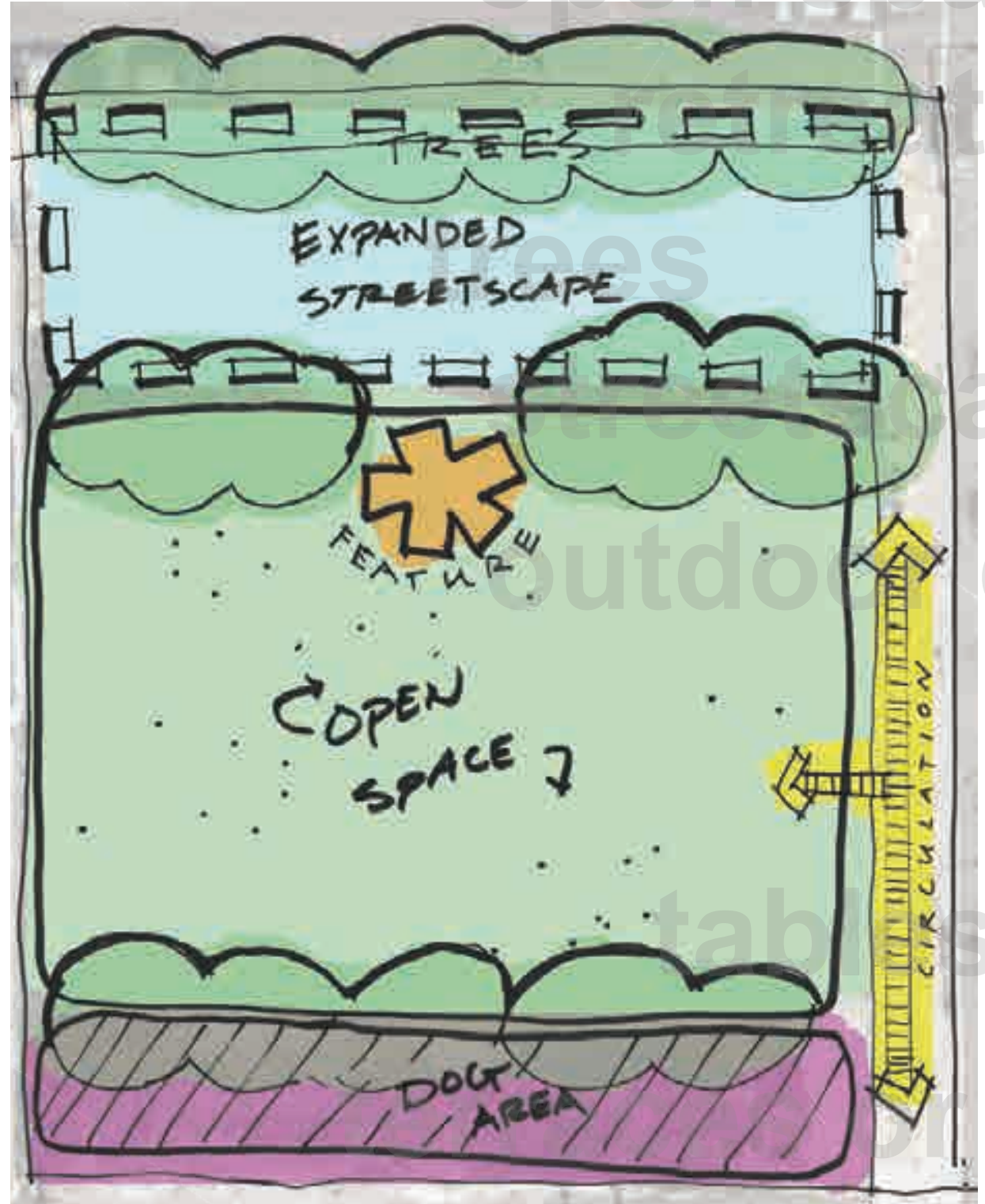
Google



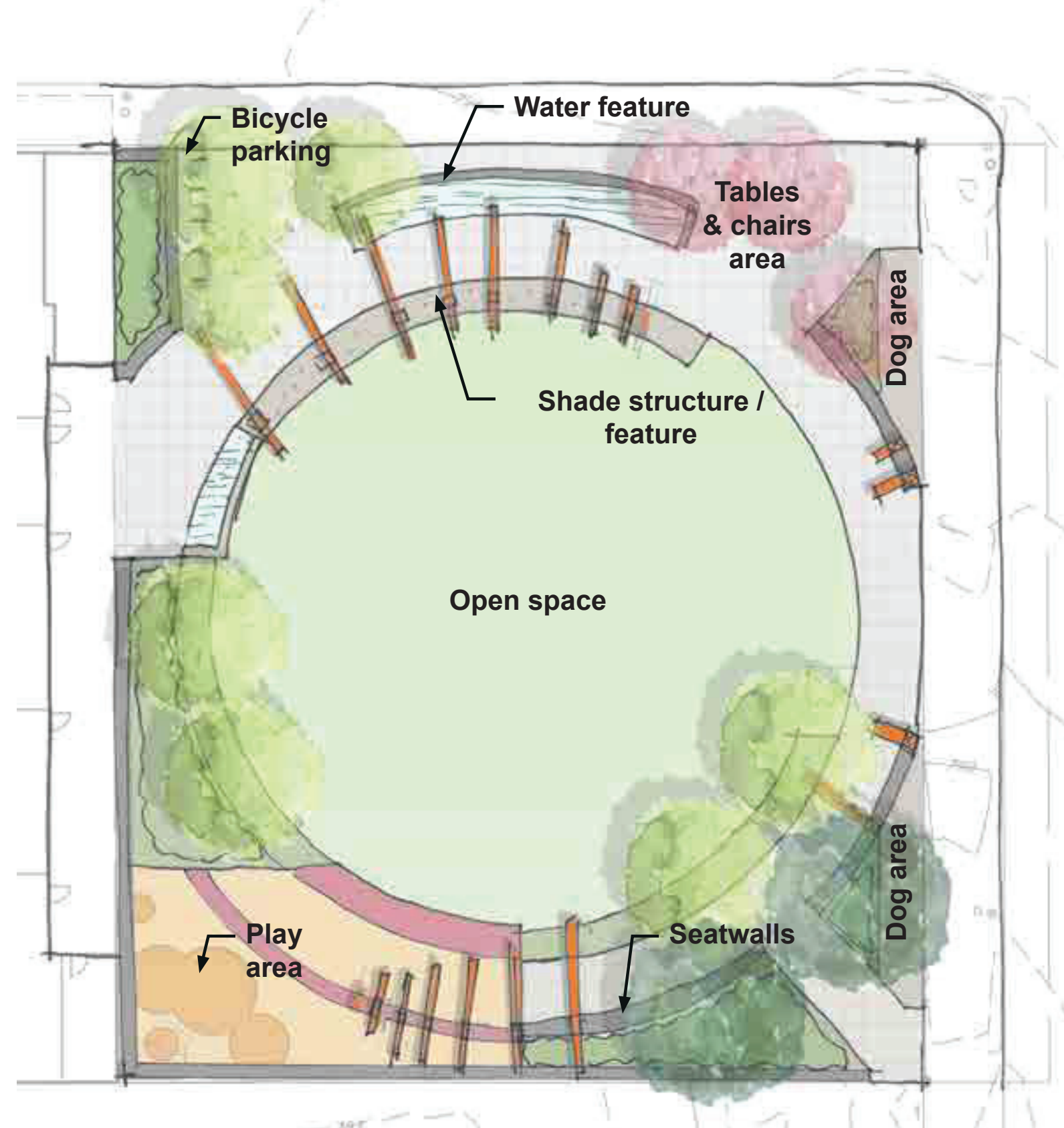
PROJECT BACKGROUND

Today is a part of more than *13 years* in the making of this downtown place, a **PARK** that the community is passionate about

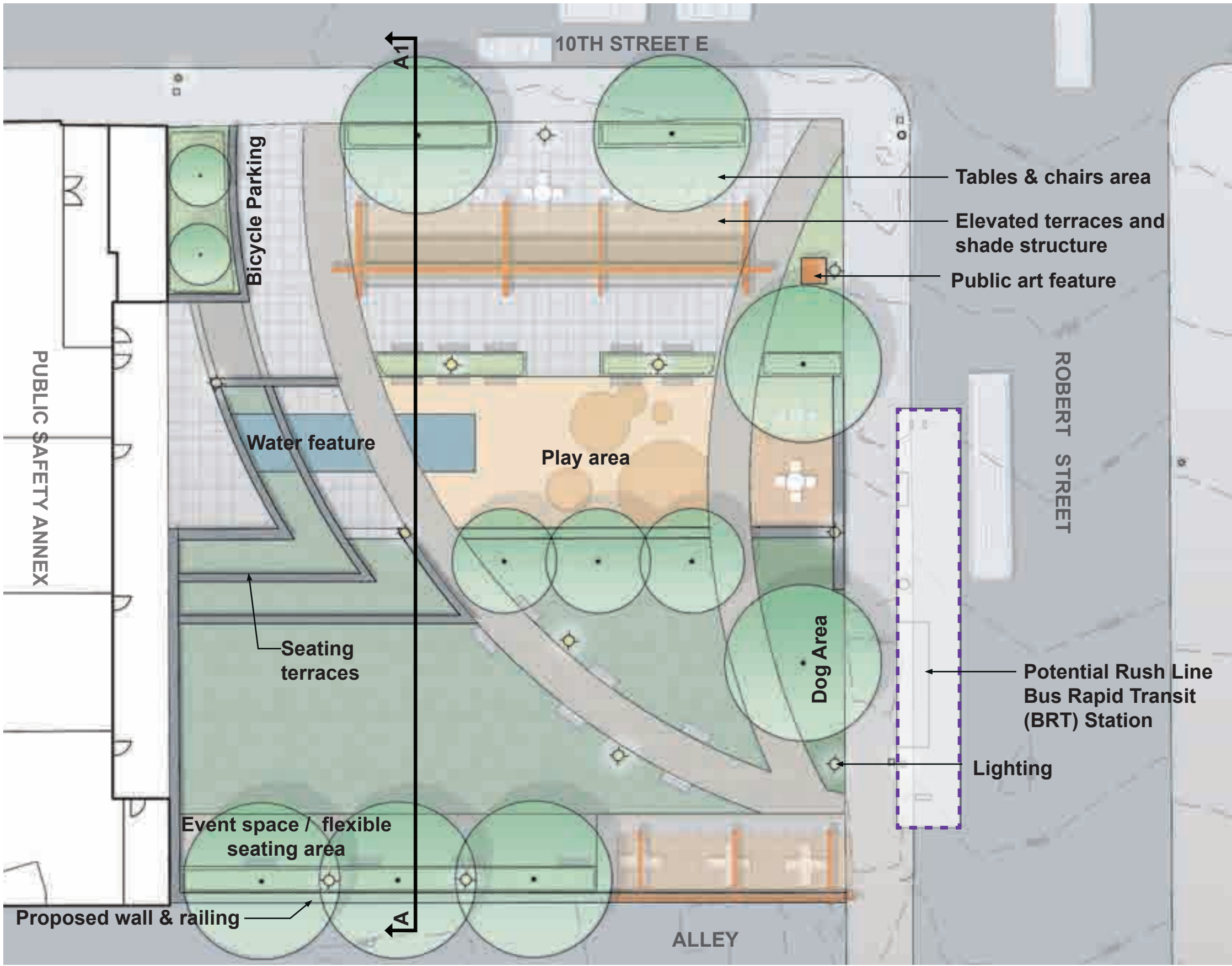




Concepts from Design Advisory Committee Meetings: May - June 2018



Concept from HRA and City Council Meeting: October 2018



PEDRO PARK EXPANSION CONCEPT

The current design concept for Pedro Park allows the park to adapt to future expansion opportunities IF they become available in a future phase.

***Note:** There is not currently funding or property available for park expansion.

This park expansion concept study addresses the following:

1. Potential expansion space provides opportunities for additional park programming.
2. Planning for connectedness and a continuous park
3. Existing Grades: Topographic changes that add interesting opportunities for enhancing the park experience



Concept Evolutions

A. Axial orientation from EW to NS to address future park expansion

B. Further engineering and grading to make the park fully accessible

C. Maximizing the public park space by developing the west edge and delineation of public and private

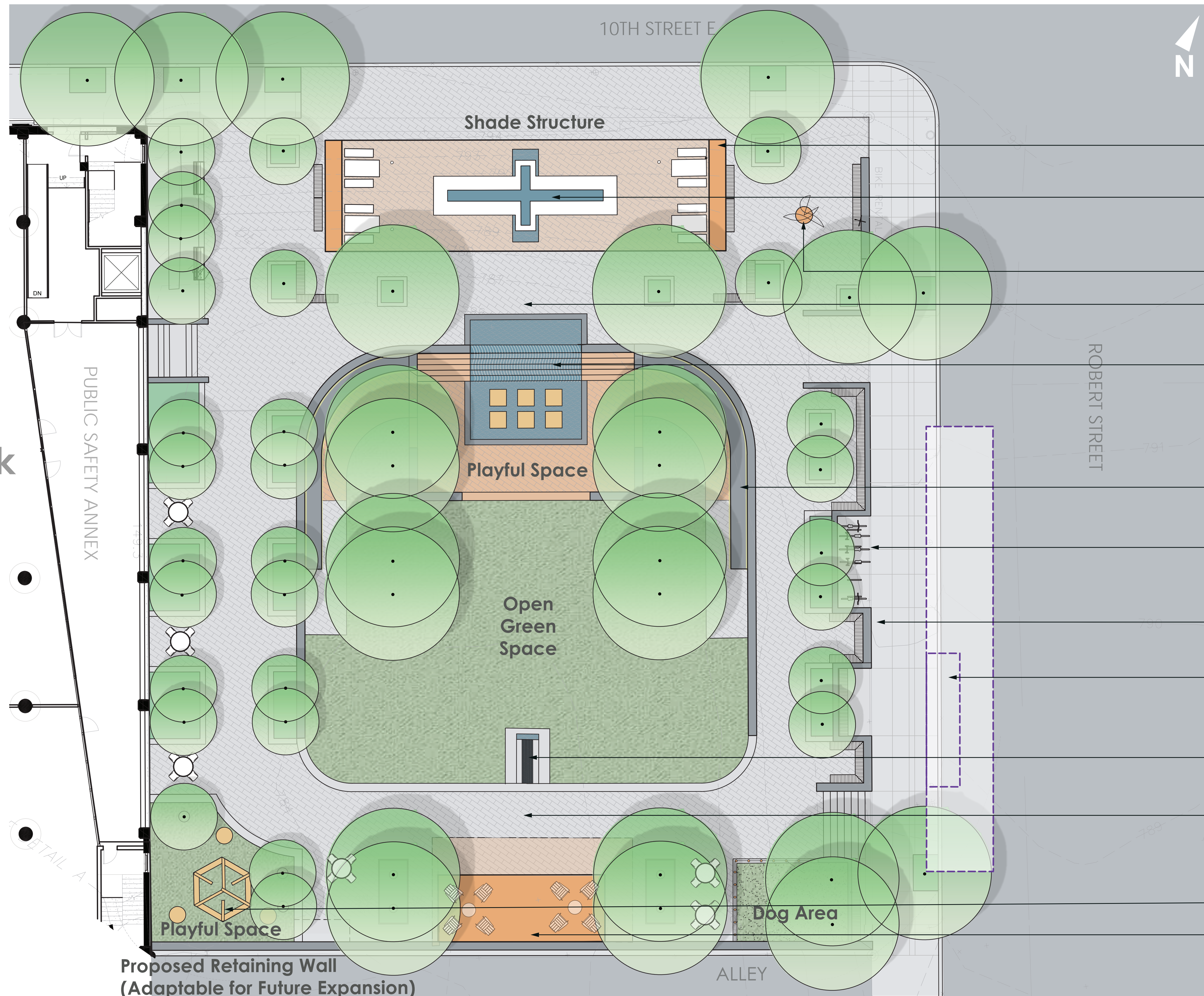
D. Activating the corner as an integral component of the design, a destination in the park and new expanded play opportunity

Concept Framework

Integrate Streetscape with Park Design
 Not Another Mears Park
 Residential
 Multi-functional
 Looking Forward: Future Legacy
 Capital City

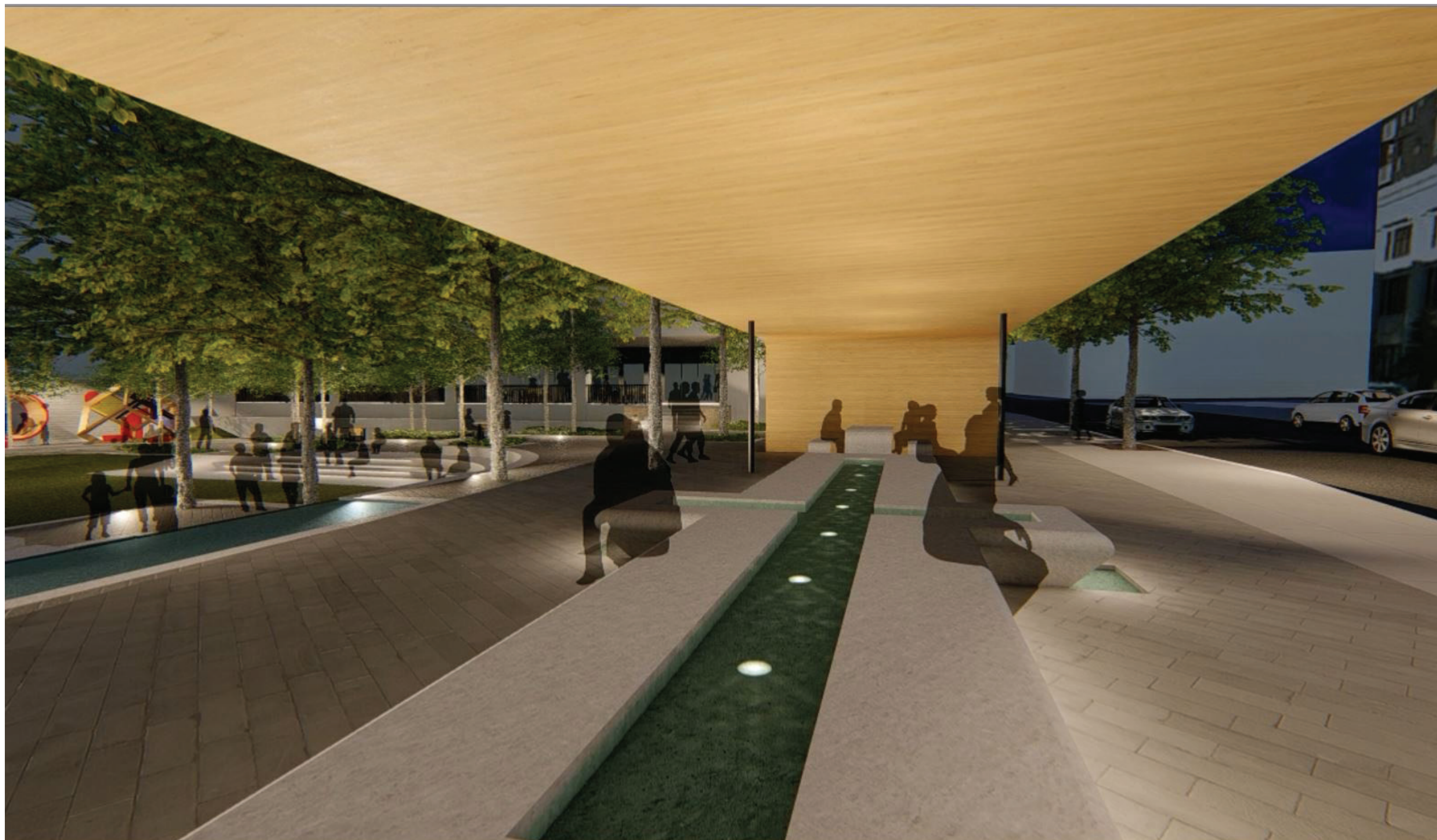
Program

Open Green Space:
 Mid-Size Performance
 Variety of Rooms
 Water Feature
 Splash Pad
 Sun Protected Spaces: 2
 Dog Relief
 Play Space
 Art
 Garden Plantings
 BRT Considerations



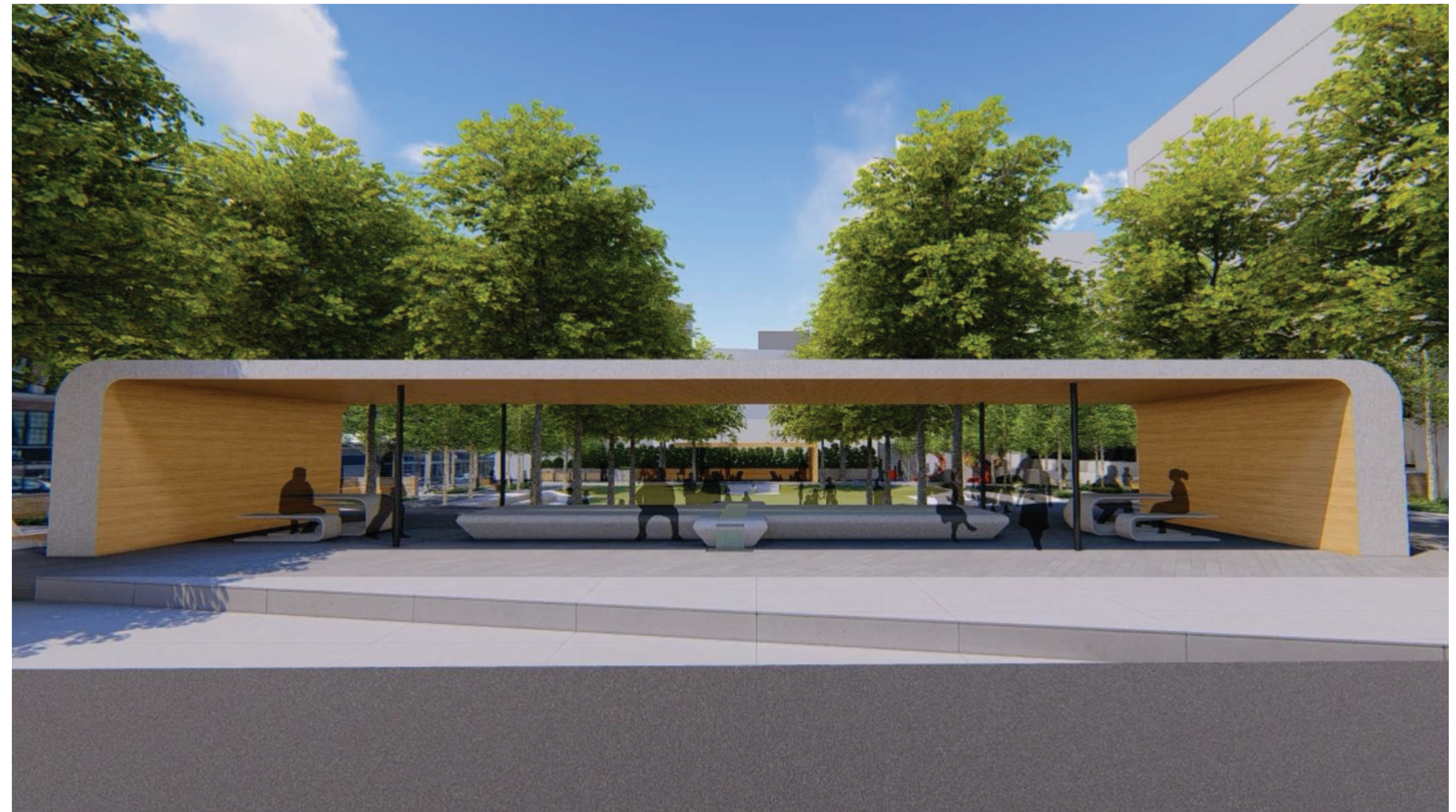
- Elevated Terrace & Shade Structures
- "Community Table" Bench and Seating Area
- Public Art
- Event Space A
- Primary Water Feature
- Seating Terraces
- Bike Parking
- Integrated Street Scene
- Future Rush Line Bus Rapid Transit (BRT) Station
- Secondary Water Feature
- Event Space B
- Passive Playful Space
- Park Shelter with Tables & Chairs





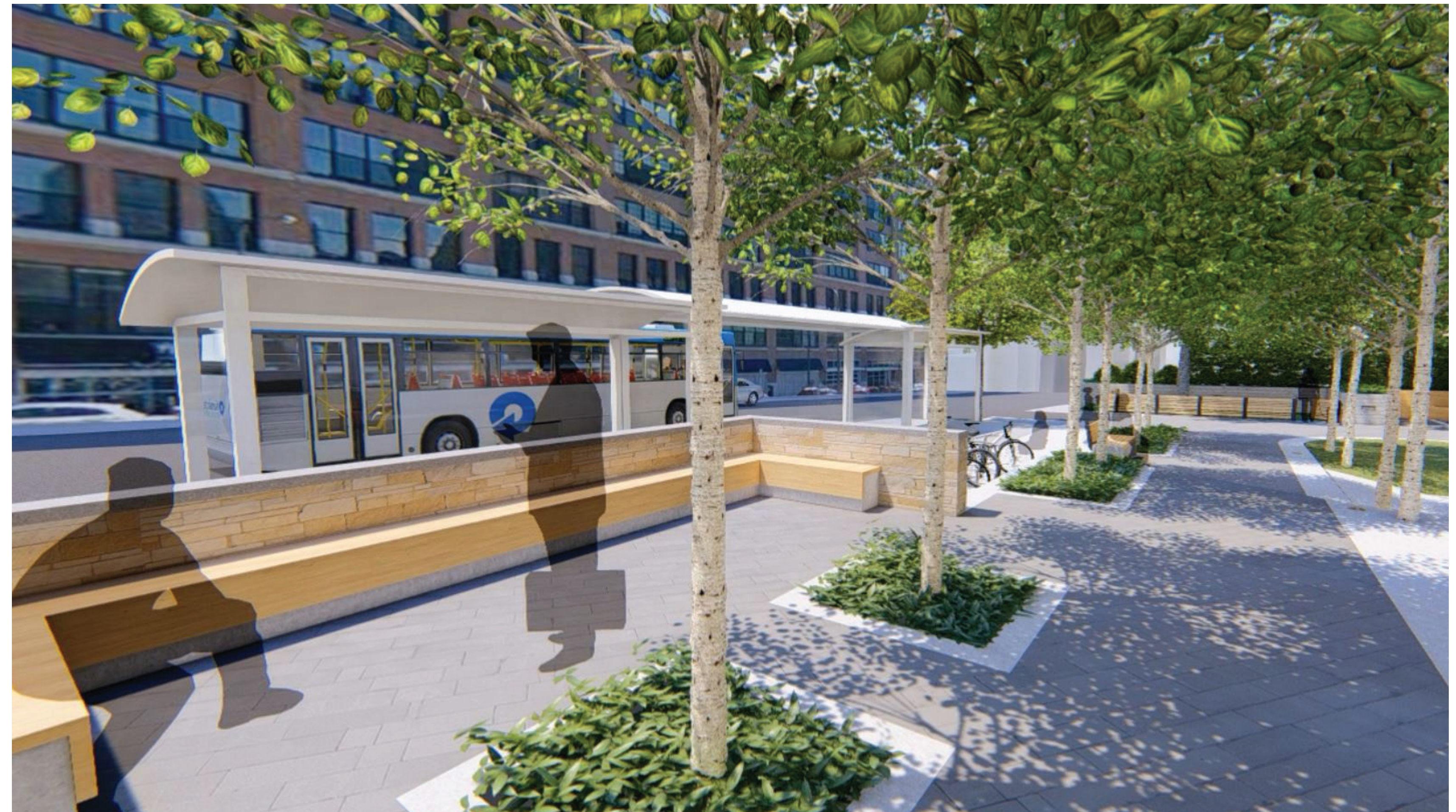
ADVANCED DESIGN CONCEPT PERSPECTIVES

PEDRO PARK



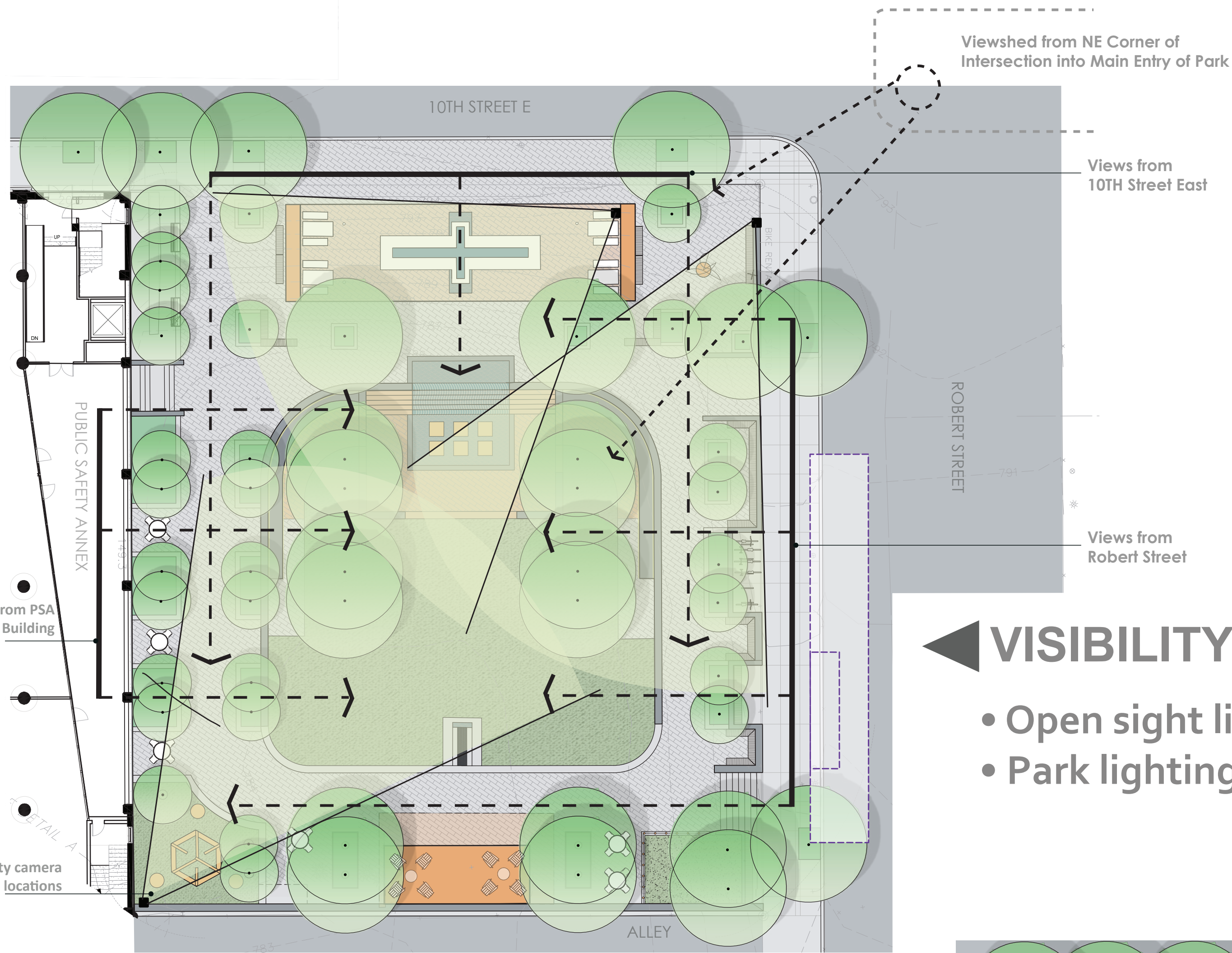
ADVANCED DESIGN CONCEPT PERSPECTIVES

PEDRO PARK



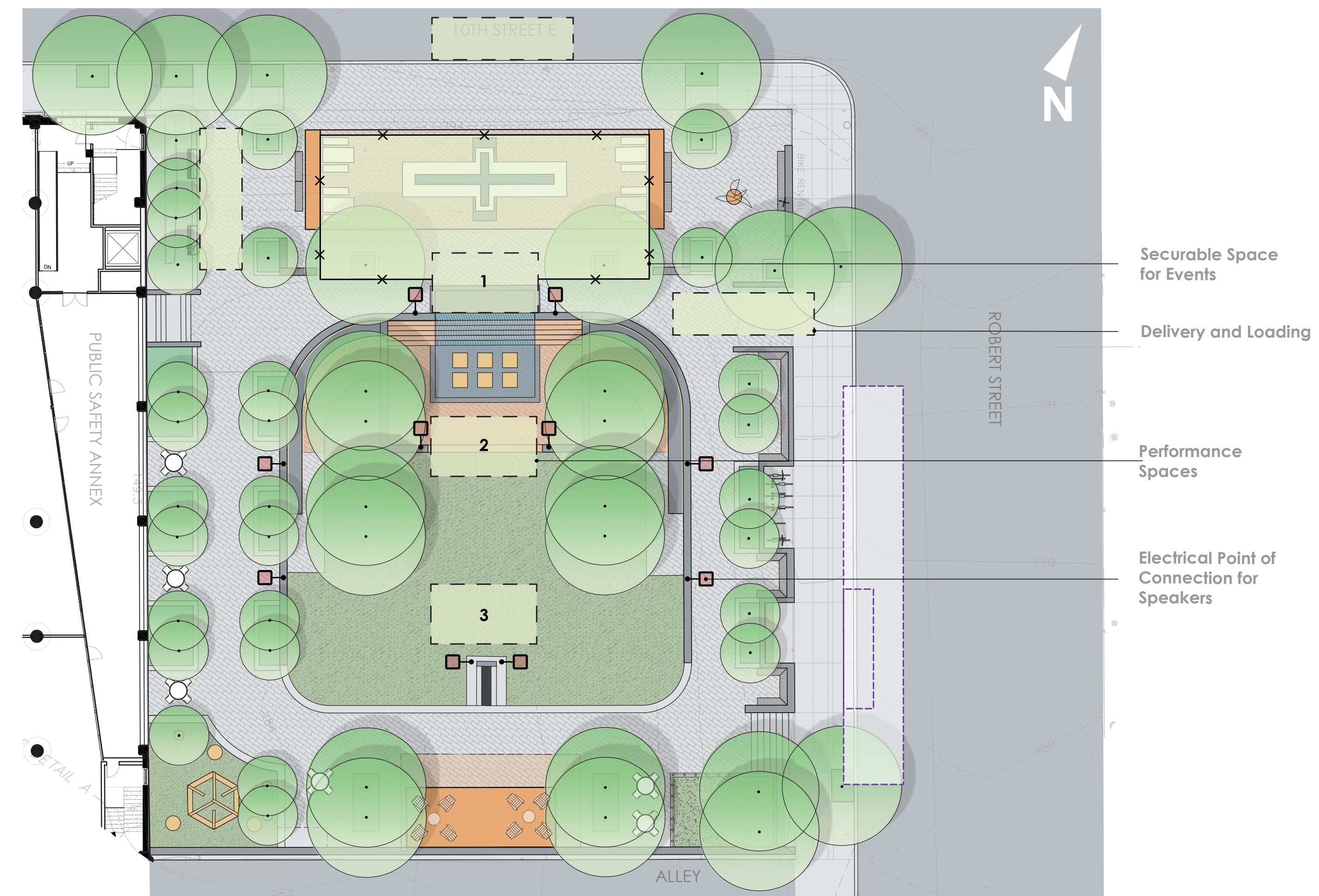
ADVANCED DESIGN CONCEPT PERSPECTIVES

PEDRO PARK



VISIBILITY INTO THE PARK

- Open sight lines throughout the park
- Park lighting is designed for all hours

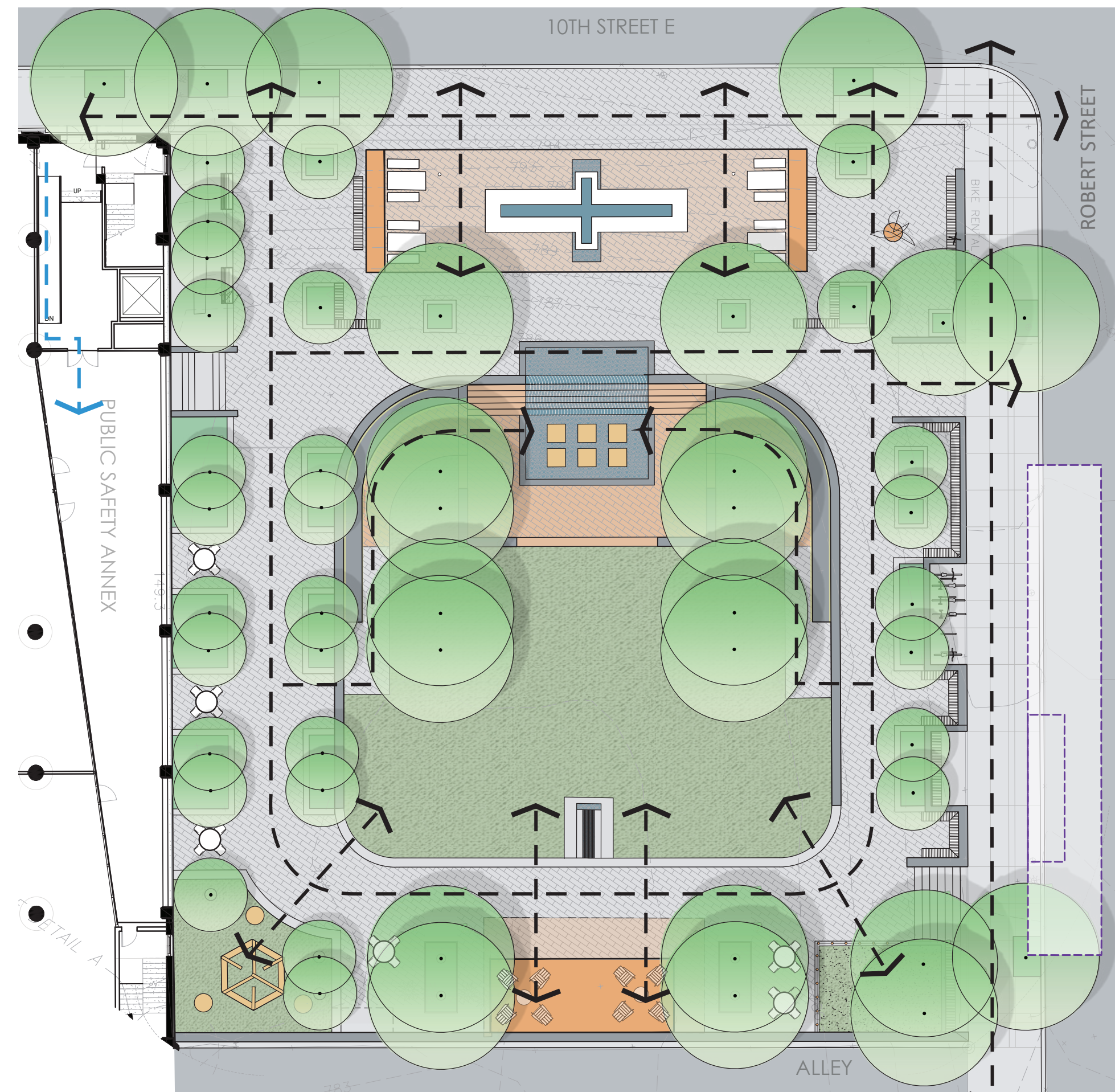


PERFORMANCE & EVENT SPACE

- Flexibility to adapt to small-mid size events
- Considers variety of production & setup needs
- Equipment access from 10th and Robert Streets

ACCESSIBLE ROUTES

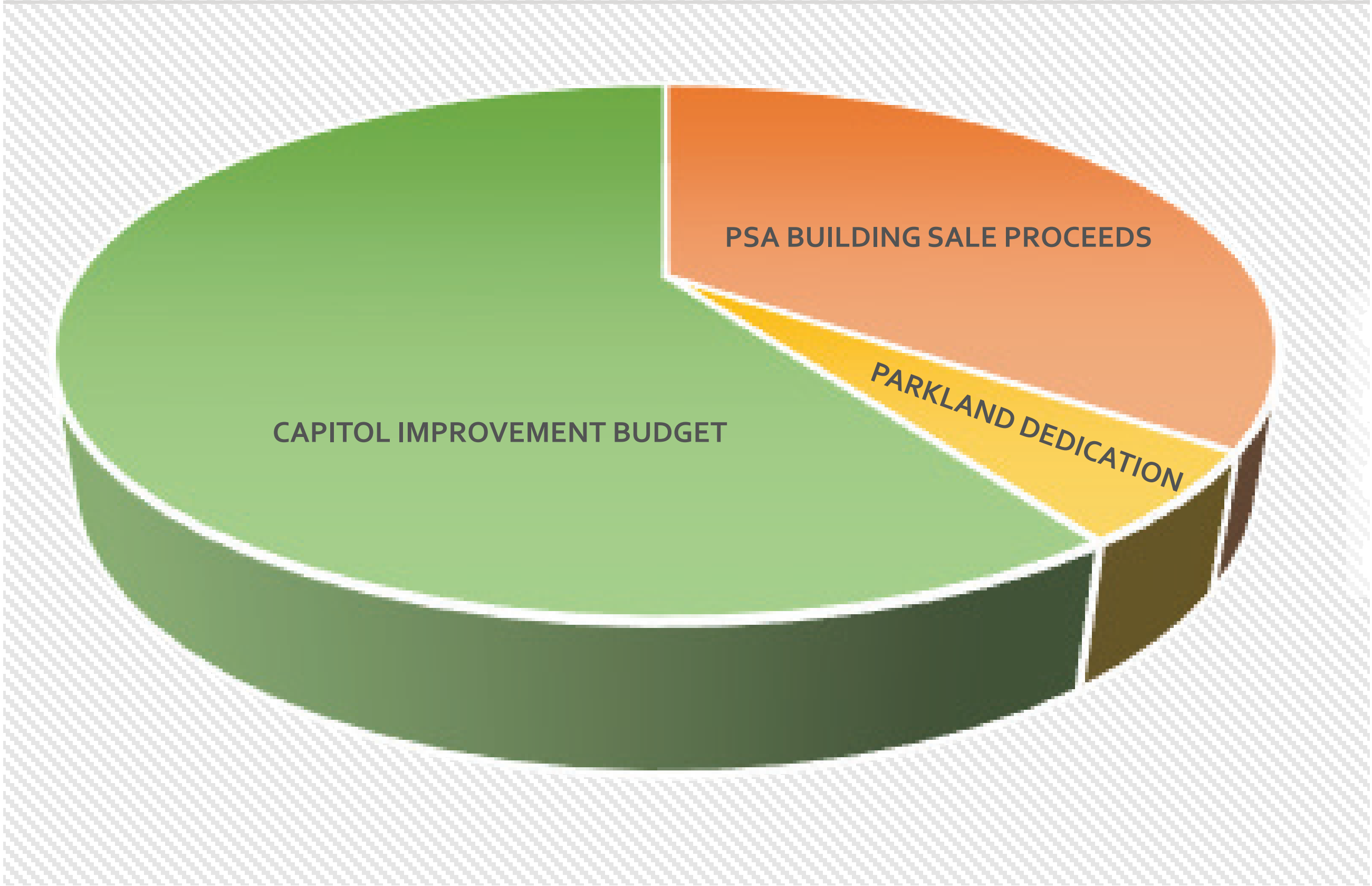
- Park is accessible from 10th and Robert Streets
- Public Safety Annex Building is accessible during business hours from 10th Street E.



FUNDING SOURCES

PEDRO PARK BUDGET

\$3,746,811



Budget includes costs for community engagement, design, engineering, construction, and project contingencies.

5% DOWNTOWN PARKLAND DEDICATION FUNDS

Under the Parkland Dedication Ordinance, any development that increases the number of residential dwelling units, increases the floor area of commercial, industrial, or storage buildings, or any combination thereof, will be required to dedicate land for park space as determined by the City Council or pay a fee in lieu of dedicating land.

35% PUBLIC SAFETY ANNEX (PSA) BUILDING SALE

In 2018, the City Council authorized the vacation and disposal of the former Public Safety Annex building to the Housing and Redevelopment Authority for subsequent redevelopment. If the Public Safety Annex building is sold, sale proceeds would be a part of the Pedro Park budget.

60% CAPITOL IMPROVEMENT BUDGET

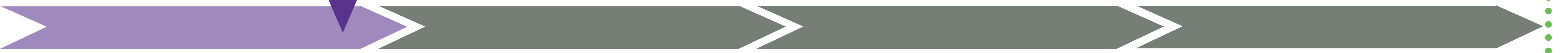
The Capital Improvement Budget (CIB) is designed to provide resources for the City’s long-term capital needs, including repair and construction of sewers, streets, parks, city buildings, housing and economic development.



ANTICIPATED PROJECT SCHEDULE

TENTATIVE COMPLETION 2020

We are here

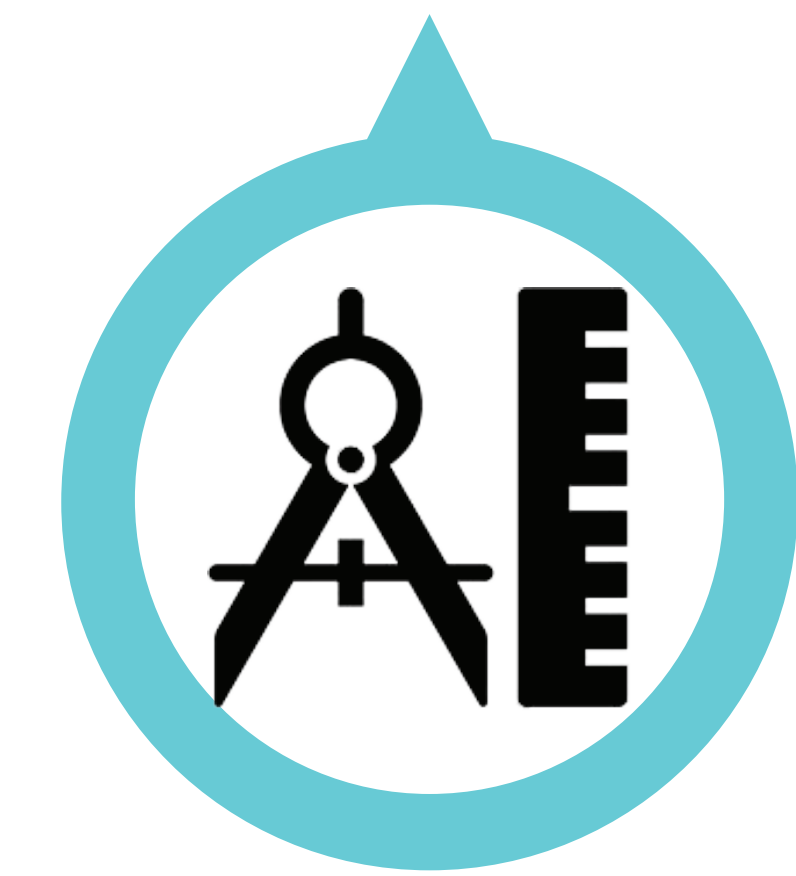


DESIGN ADVISORY COMMITTEE & COMMUNITY OUTREACH

DESIGN DEVELOPMENT & COST ANALYSIS

FINAL DESIGN & CONSTRUCTION DOCUMENTS

PROJECT BIDDING AND CONSTRUCTION



2018-Winter 2019

Spring 2019

Spring 2019

Summer/Fall 2019

- Design Advisory Committee
- Stakeholder Input
- Concept Development

- Design Refinement
- Technical Design
- Value Engineering

- Site Plan Review
- Plans & Specifications
- Final Cost Estimate

- Bid Advertisement & Award
- Permitting
- Construction Activity



PEDRO PARK