



LAND USE COMMITTEE MEETING

St. Anthony Park Community Council

December 6th, 2018

NEW PARK AT WESTGATE





SITE CONTEXT





System
programming needs
Neighborhood needs

Community
programming
layout
amenities

Context
geographic
historic
uses

Saint Paul The Most Livable City in America
Active lifestyles, Vibrant places, Vital Environment, Respond creatively to change, Innovate, connect

Budget
design . engering .
construction

Regulatory
health . safety . welfare
Federal . State . Local

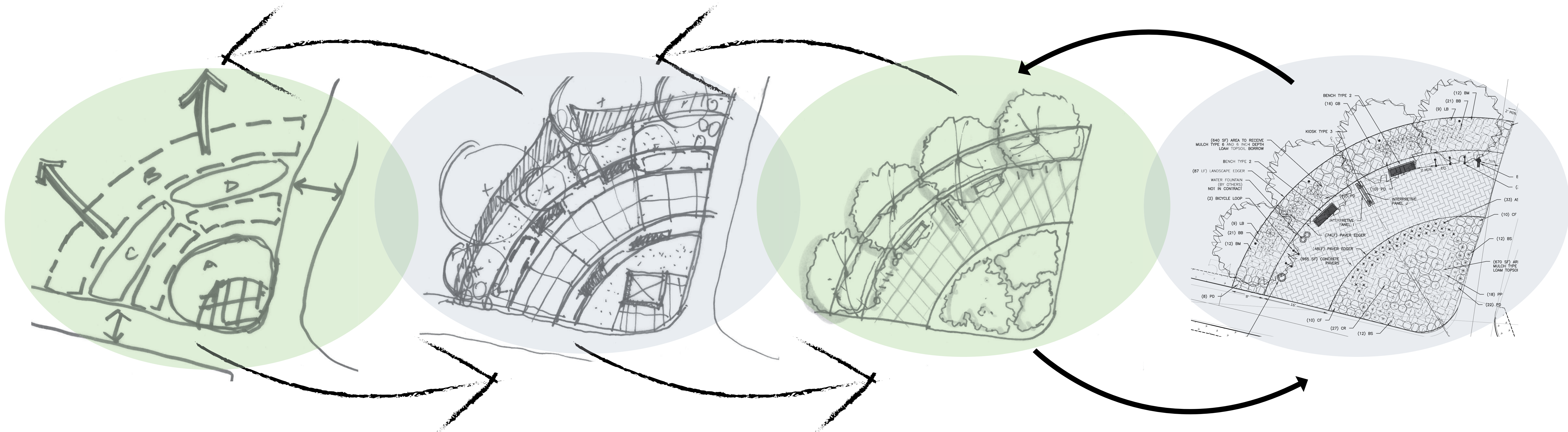
Funding
source requirements

O & M
maintainable
sustainable

DECISION FACTORS

**City of Saint Paul
Parks and Recreation**

NEW PARK AT WESTGATE
St. Anthony Park Community Council - Land Use Committee



- Budget
- Analysis
- Diagram
- Priorities

- Concepts
- Evaluation
- Design iteration

- Design refinement
- Cost feasibility
- Work plan & scope

- Contact documents
- Technical detail
- Value engineering
- Bidding - construction

DESIGN PROCESS



**WHERE WE'VE
BEEN**

**WHERE WE
ARE**

**WHERE WE'RE
GOING**

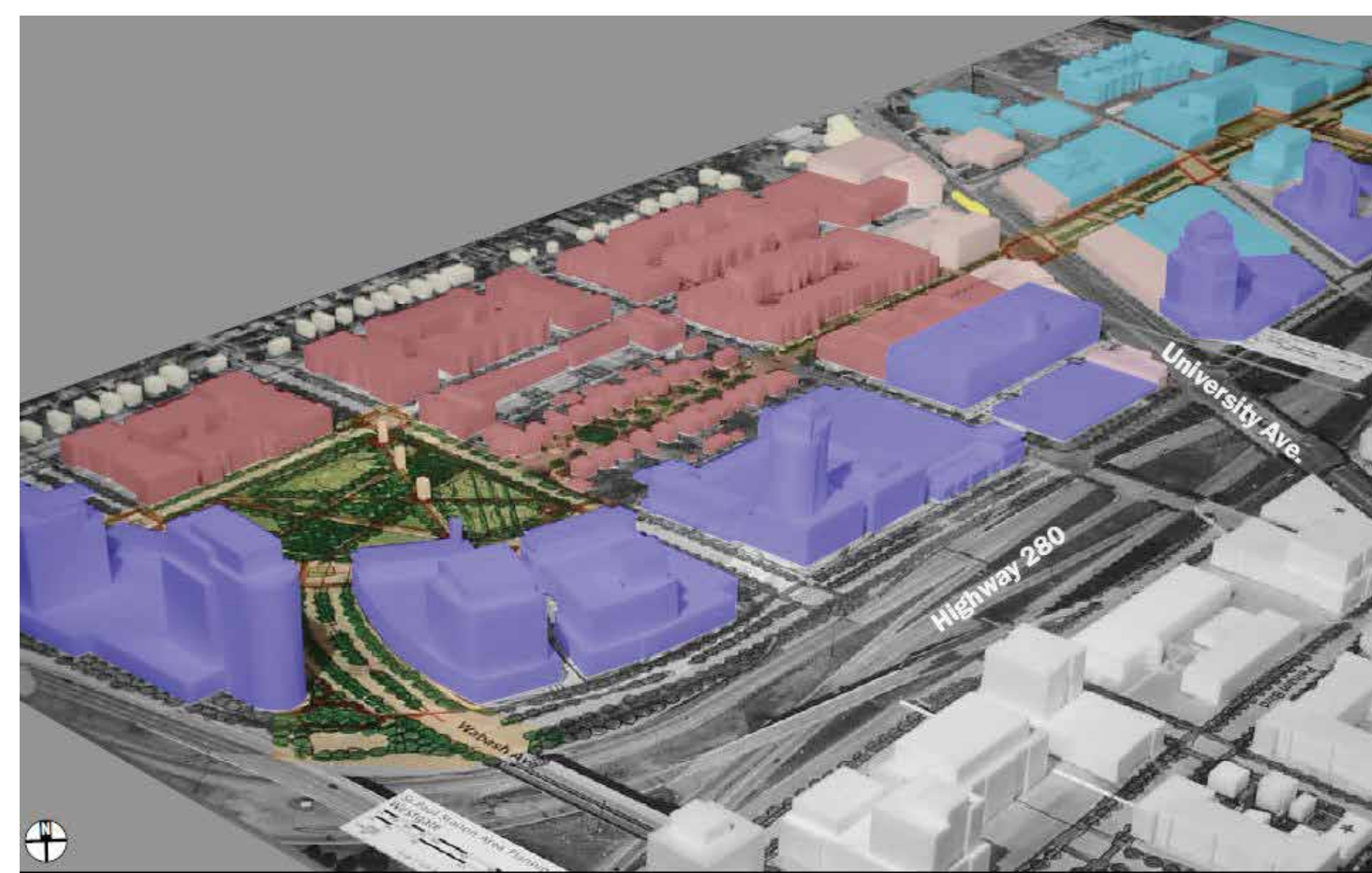
PROJECT PATH

WHERE WE'VE BEEN

WHERE WE ARE

WHERE WE'RE GOING

2008



PLANNING STUDIES

2017





WHERE WE'VE BEEN

WHERE WE ARE

WHERE WE'RE GOING



FLEXIBLE LAWN ALTERNATIVE

- Flexible, sunny lawn space
- Shaded areas with benches and places to sit



PATHWAYS AND ROLLING MOUNDS ALTERNATIVE

- Gentle topography changes create places of play until long-term funding is secured for the park
- Rolling hills and native plants provide a low cost, low maintenance, temporary solution for the neighborhood park



PARK DESIGN CONCEPTS



WHERE WE'VE BEEN

WHERE WE ARE

WHERE WE'RE GOING

MILLBERRY & LEGENDS AT BERRY APARTMENTS

CONSULTANTS

 PLANNING
 CIVIL ENGINEERING
 LAND SURVEYING
 LANDSCAPE ARCHITECTURE
 ENVIRONMENTAL
 7200 Hemlock Lane, Suite 300
 Maple Grove, MN 55369
 763.424.5505
 www.loucksinc.com
 LOUCKS PROJECT NO. 16008.0A

PROJECT TITLE
MILLBERRY & LEGENDS AT BERRY APARTMENTS

ISSUE #	DATE	DESCRIPTION
	01/17/2018	PERMIT SET
8	03/05/2018	CITY SUBMITTAL
9	05/16/2018	CITY SUBMITTAL
10	06/06/2018	CITY SUBMITTAL
11	06/07/2018	CITY SUBMITTAL
	06/11/2018	PRECONSTRUCTION PAGE FLIP
	08/03/2018	ASI-01 - CONTRACT SET
	09/12/2018	ASI-03
	10/04/2018	CITY COMMENTS
	10/08/2018	SEWERS COMMENT
	10/15/2018	DSI APPROVAL
	10/24/2018	CITY COMMENTS

HUD PROJECT #:
 TBD

CERTIFICATION
 I hereby certify that this plan, specification or report was prepared by me or under my direct supervision and that I am a duly Licensed Professional Engineer under the laws of the State of Minnesota.


 PJ Disch, PE

49933
 License Number Date 08/03/2018

DRAWN BY SRT
 CHECKED BY PJD
 COMMISSION NUMBER 1393.113/4

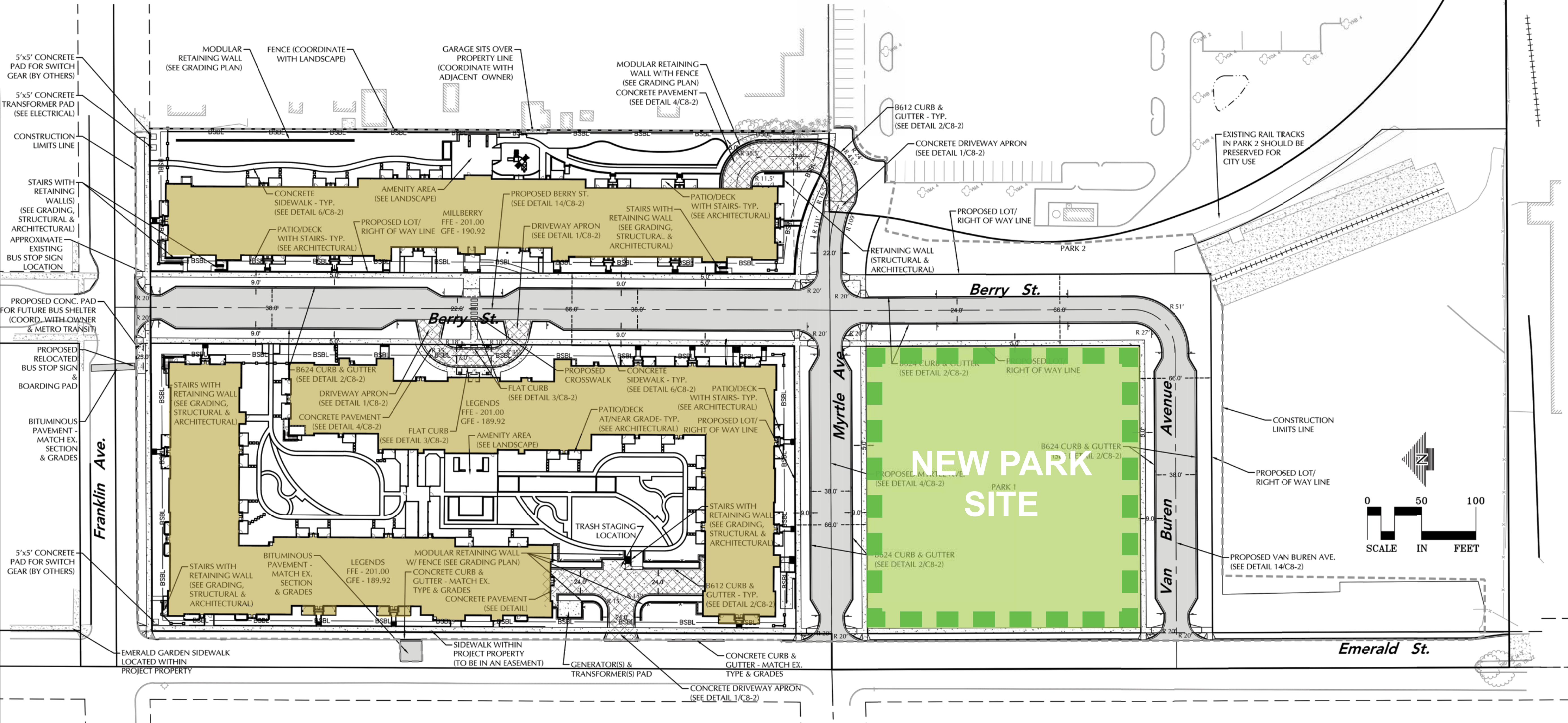
SHEET TITLE

SITE PLAN

SHEET NUMBER

C2-1

© 2017 BKV Group



DOMINIUM DEVELOPMENT



Saint Paul Parks and Recreation

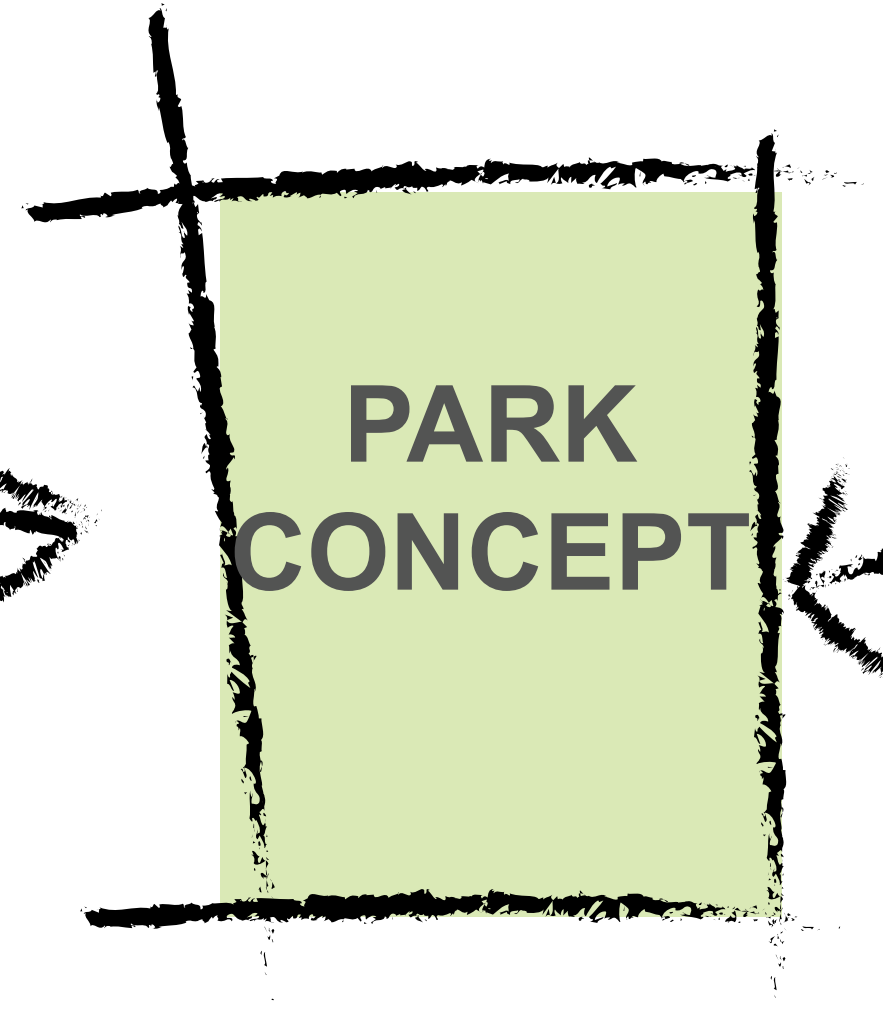
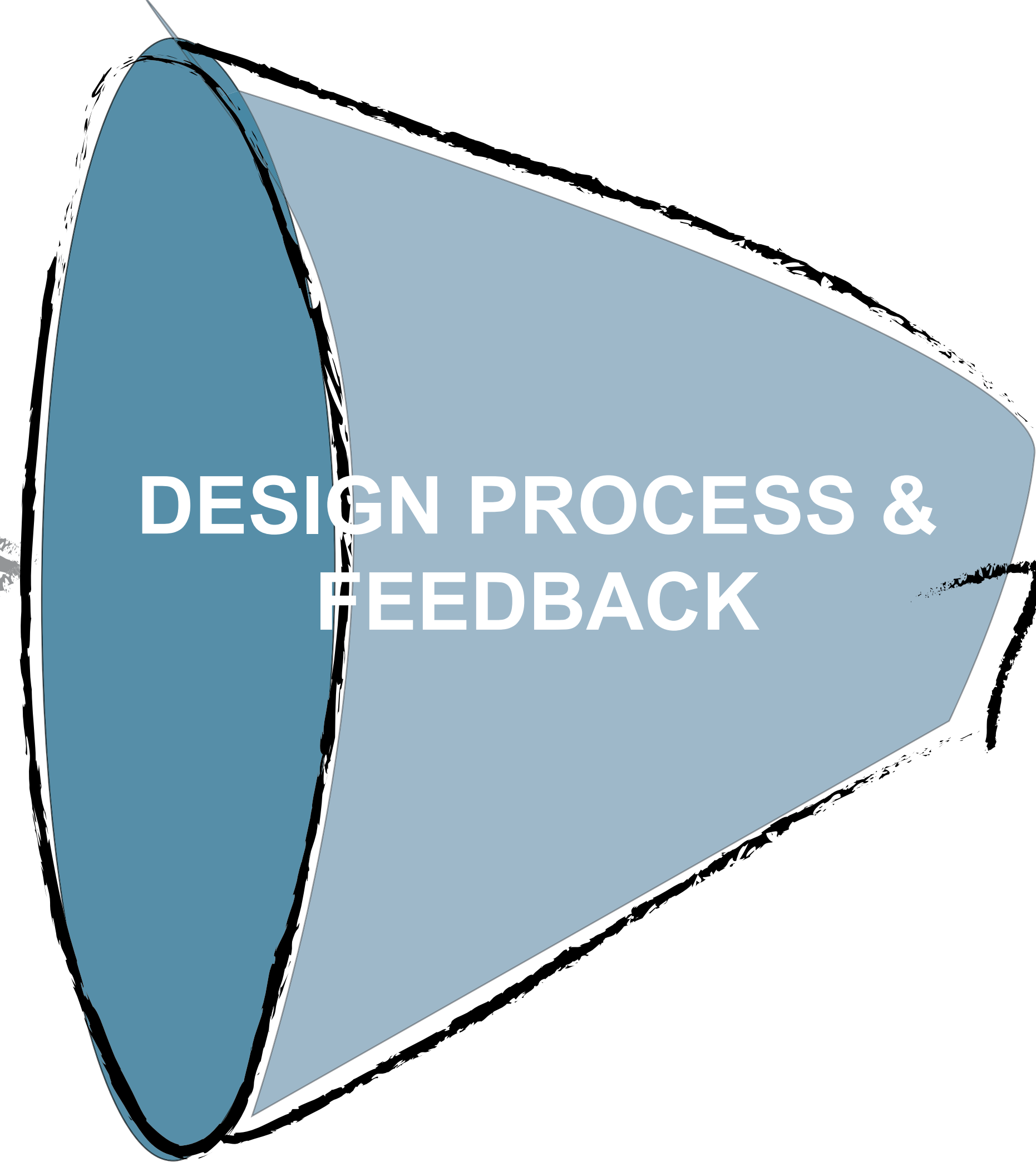
NEW PARK AT WESTGATE
 St. Anthony Park Community Council - Land Use Committee

WHERE WE'VE BEEN

WHERE WE ARE

WHERE WE'RE GOING

- Community Engagement
- Planning Processes
- Adjacent Development
- Site Context
- Construction
- Funding Opportunities



Near-term
Park
Development



Future vision
for full park
Development

DESIGN DEVELOPMENT



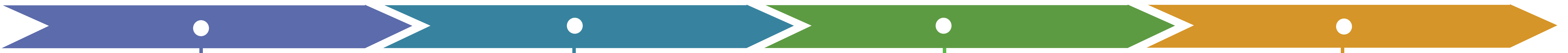


DEC. 2018

WINTER 2018

FALL 2019-2020

DETERMINED WITH FUTURE FUNDING



- **COMMUNITY ENGAGEMENT:** Meeting to develop feedback for advancing park design

- **REFINE CONCEPT:** Design meets near-term opportunities and future park development vision

- **COMMUNITY UPDATE:** Share updated concept design

- **FALL 2019:** Site becomes available, develop construction documents

- **WINTER 2019-'20:** Project out for bid

- **SPRING-FALL 2020:** Initial park construction

- **FUNDING OPPORTUNITIES:** Seek additional resources

- **COMMUNITY ENGAGEMENT:** Feedback on next phase

- **DESIGN & CONSTRUCTION:** Full-build park is developed

- Budget includes design, engineering, and construction
- Prioritization is critical

CURRENT FUNDING AVAILABLE

\$339,191

DEVELOPED PARK ESTIMATED COST

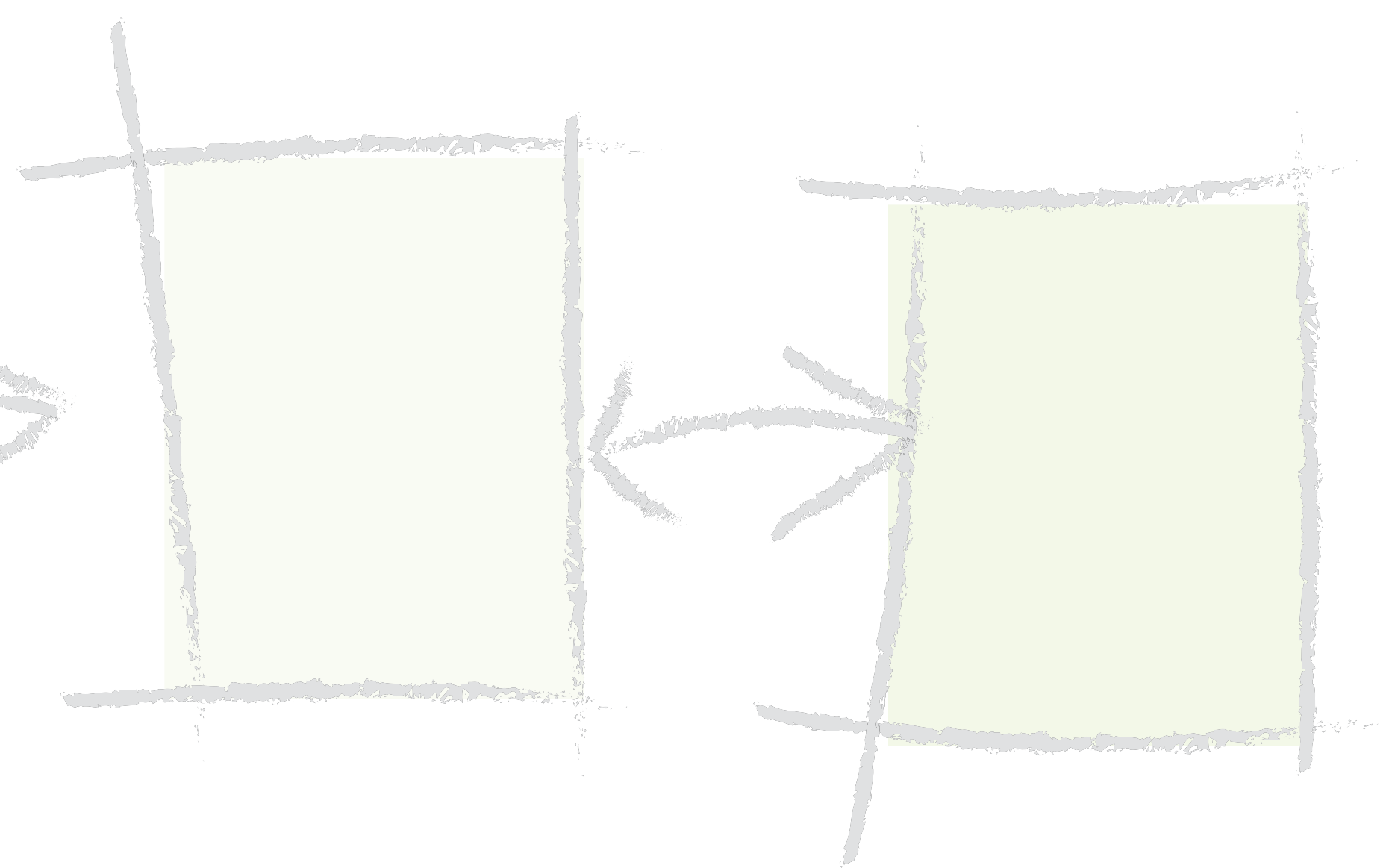
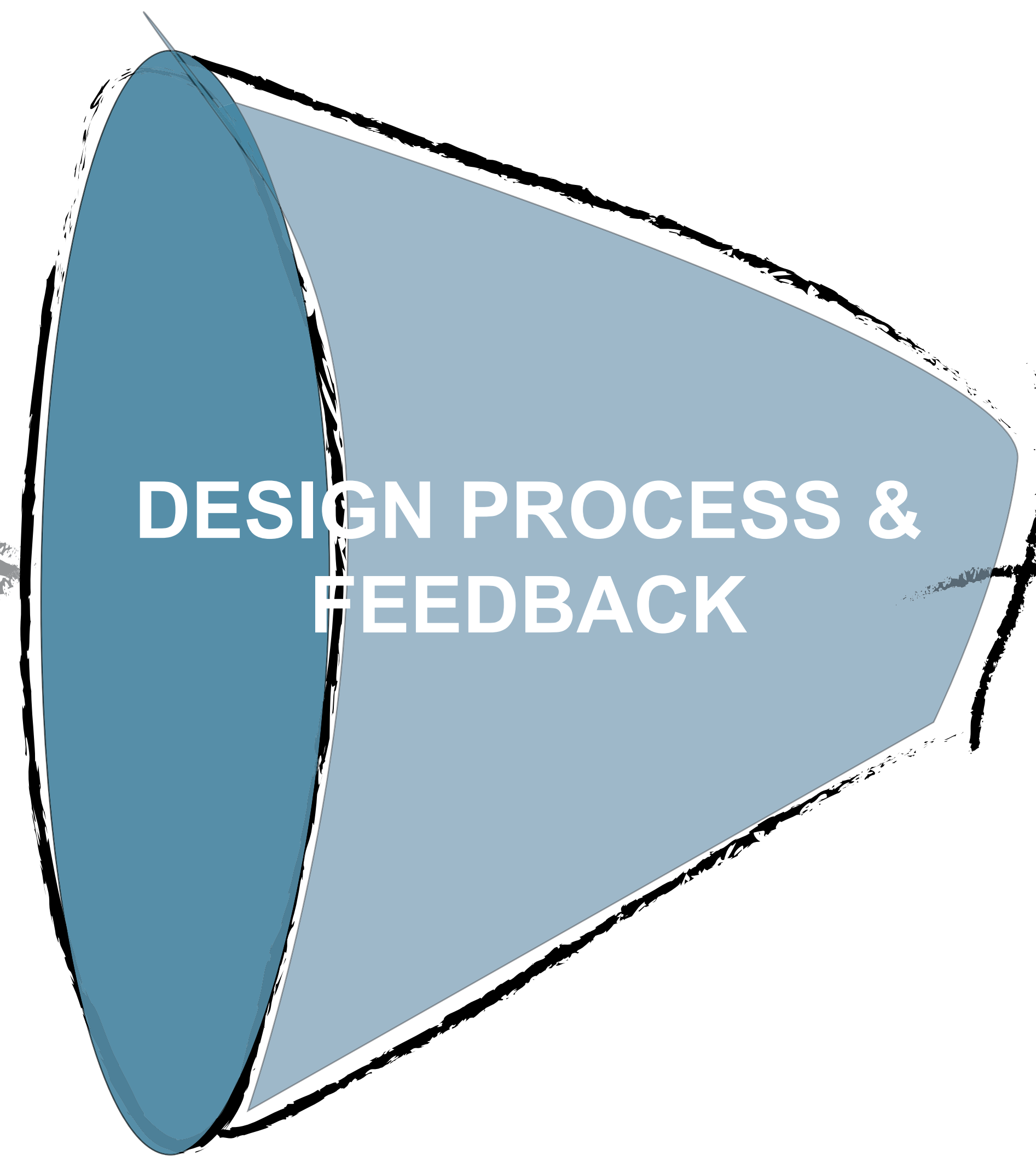
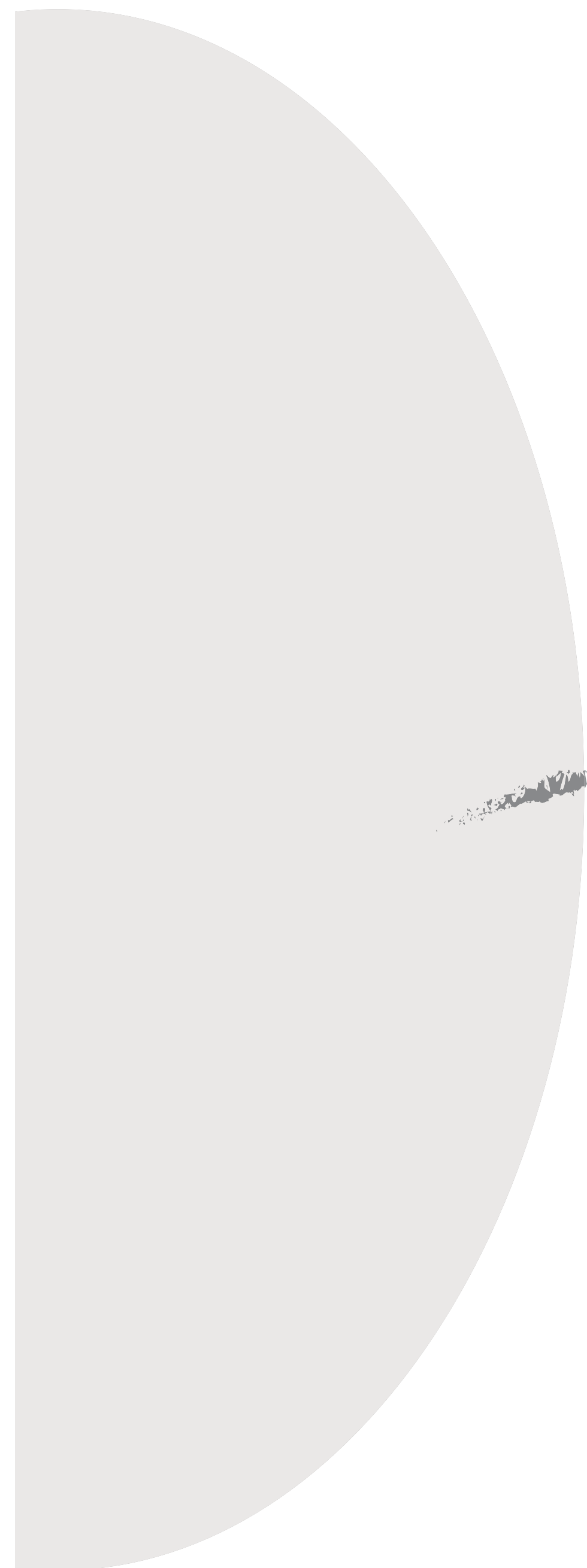
\$1.65M - \$2M

PROJECT TIMELINE & FUNDING

WHERE WE'VE BEEN

WHERE WE ARE

WHERE WE'RE GOING



DESIGN DEVELOPMENT



WHERE WE'VE BEEN

WHERE WE ARE

WHERE WE'RE GOING

FLEXIBLE LAWN



ROLLING MOUNDS



FEEDBACK ON INTERIM PARK CONCEPTS



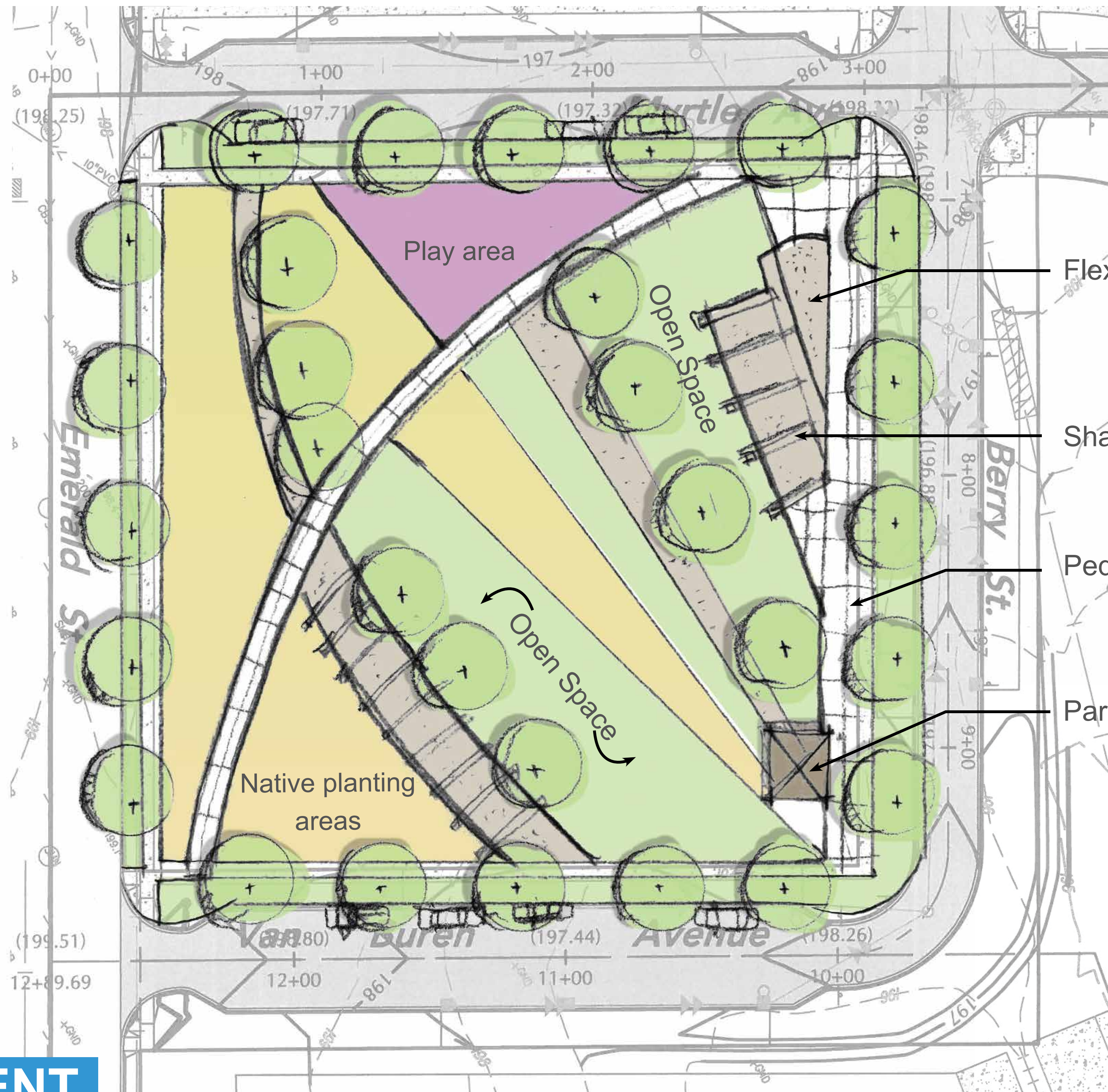
DESIGN DEVELOPMENT

WHERE WE'VE BEEN

WHERE WE ARE

WHERE WE'RE GOING

VISION PARK CONCEPT A



- Flexible seating area
- Shade structure
- Pedestrian promenade
- Park pavilion



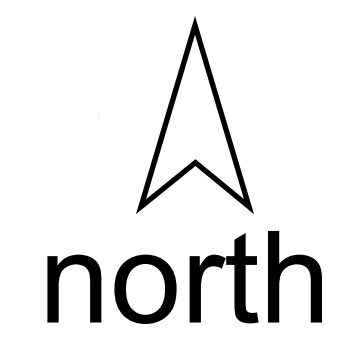
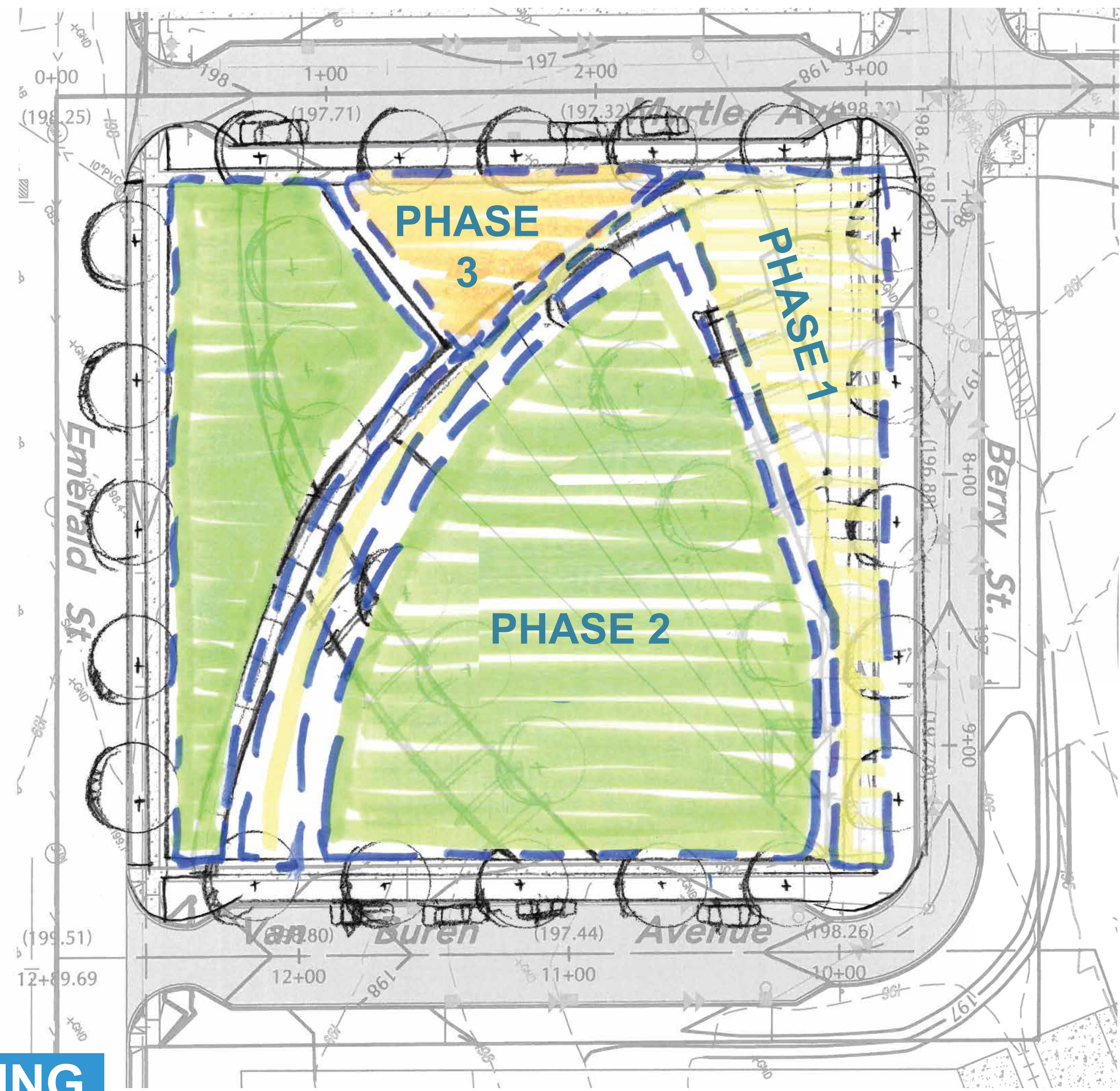
DESIGN DEVELOPMENT

WHERE WE'VE BEEN

WHERE WE ARE

WHERE WE'RE GOING

VISION PARK CONCEPT A



PROJECT PHASING

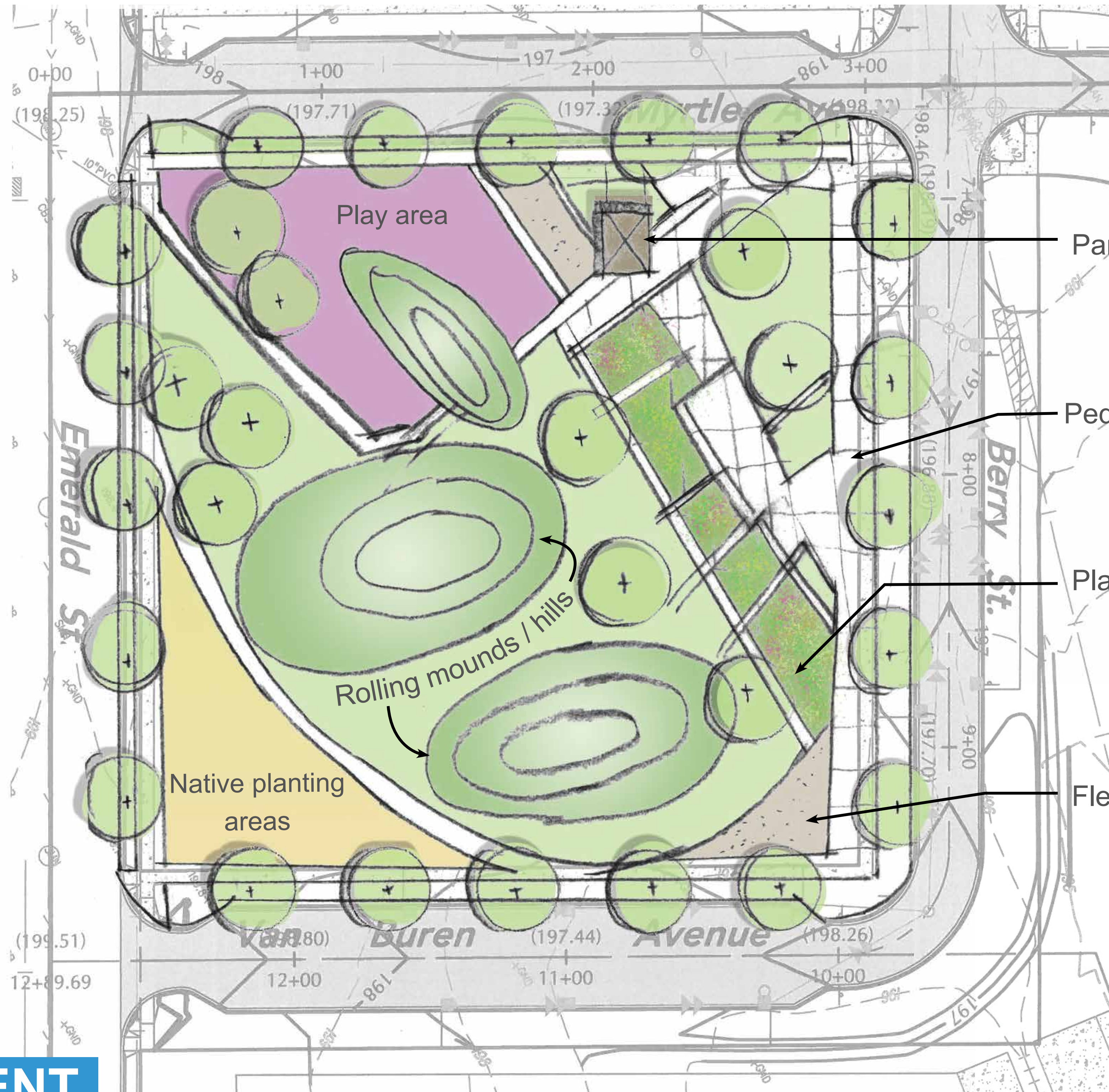


WHERE WE'VE BEEN

WHERE WE ARE

WHERE WE'RE GOING

VISION PARK CONCEPT B



Park pavilion

Pedestrian promenade

Planting areas

Flexible seating area

Play area

Rolling mounds / hills

Native planting areas

DESIGN DEVELOPMENT



Saint Paul Parks and Recreation

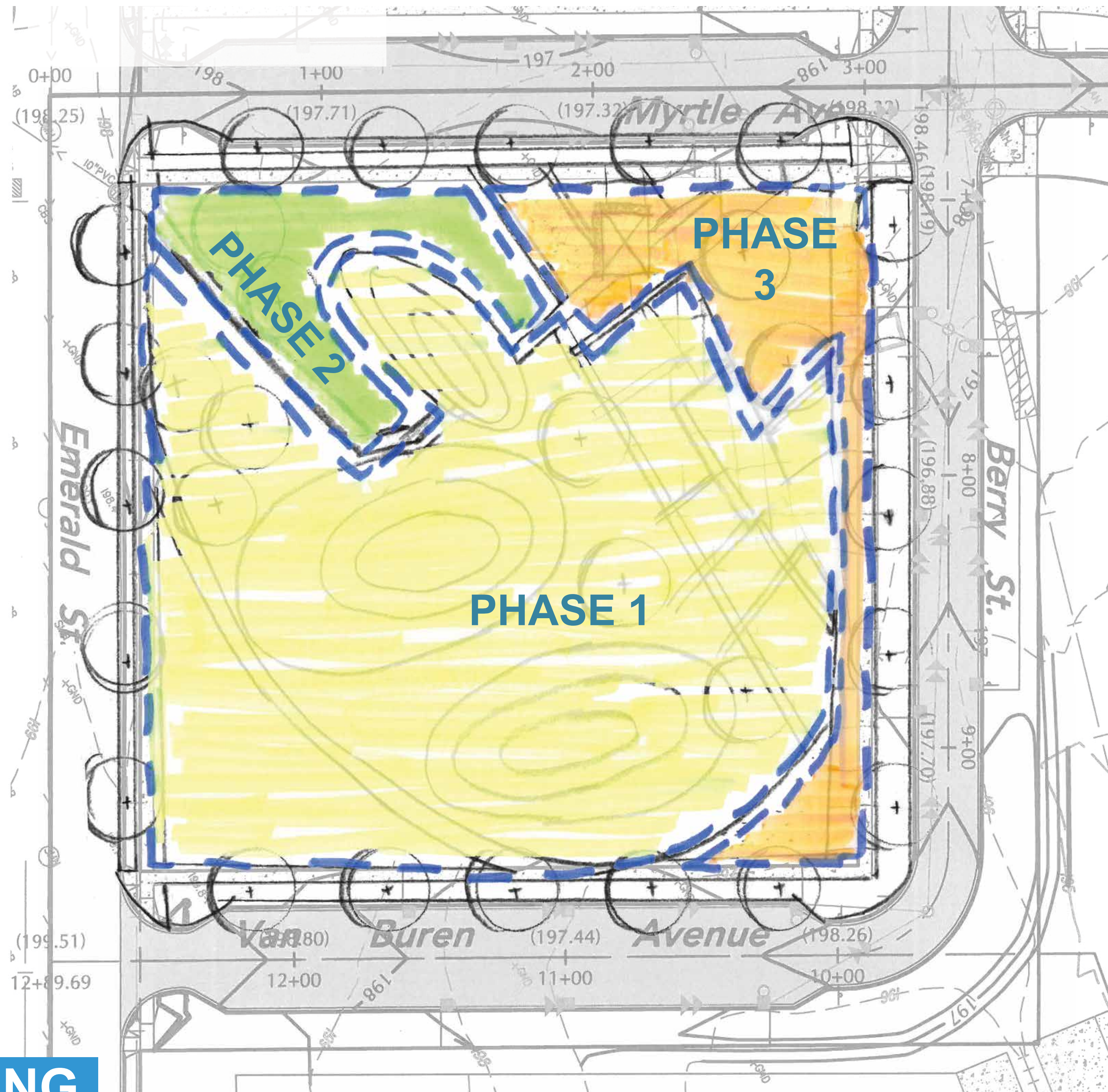
NEW PARK AT WESTGATE
St. Anthony Park Community Council - Land Use Committee

WHERE WE'VE BEEN

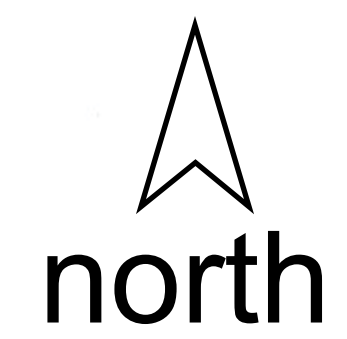
WHERE WE ARE

WHERE WE'RE GOING

VISION PARK CONCEPT B



PROJECT PHASING



WHERE WE'VE BEEN

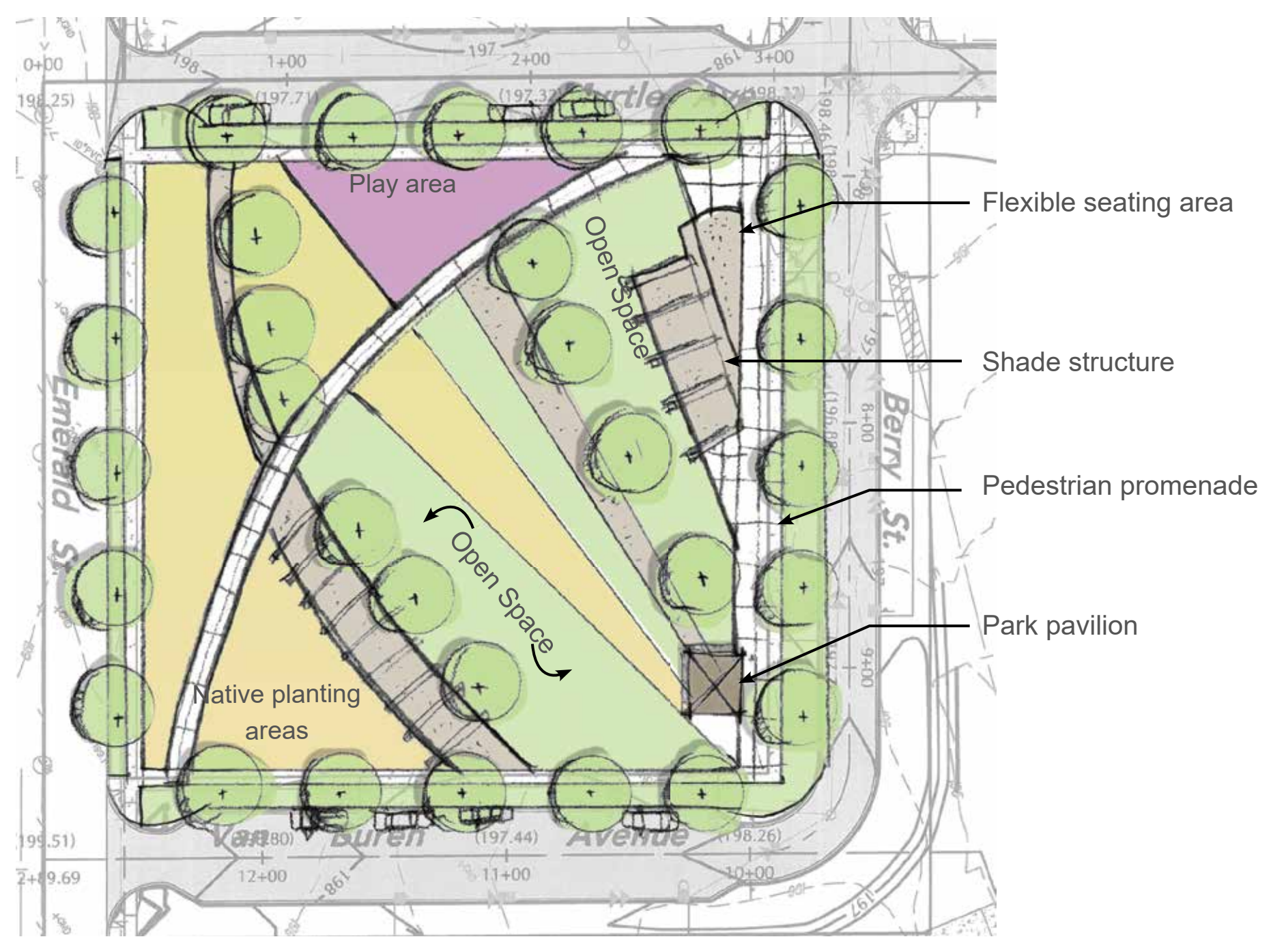
WHERE WE ARE

WHERE WE'RE GOING

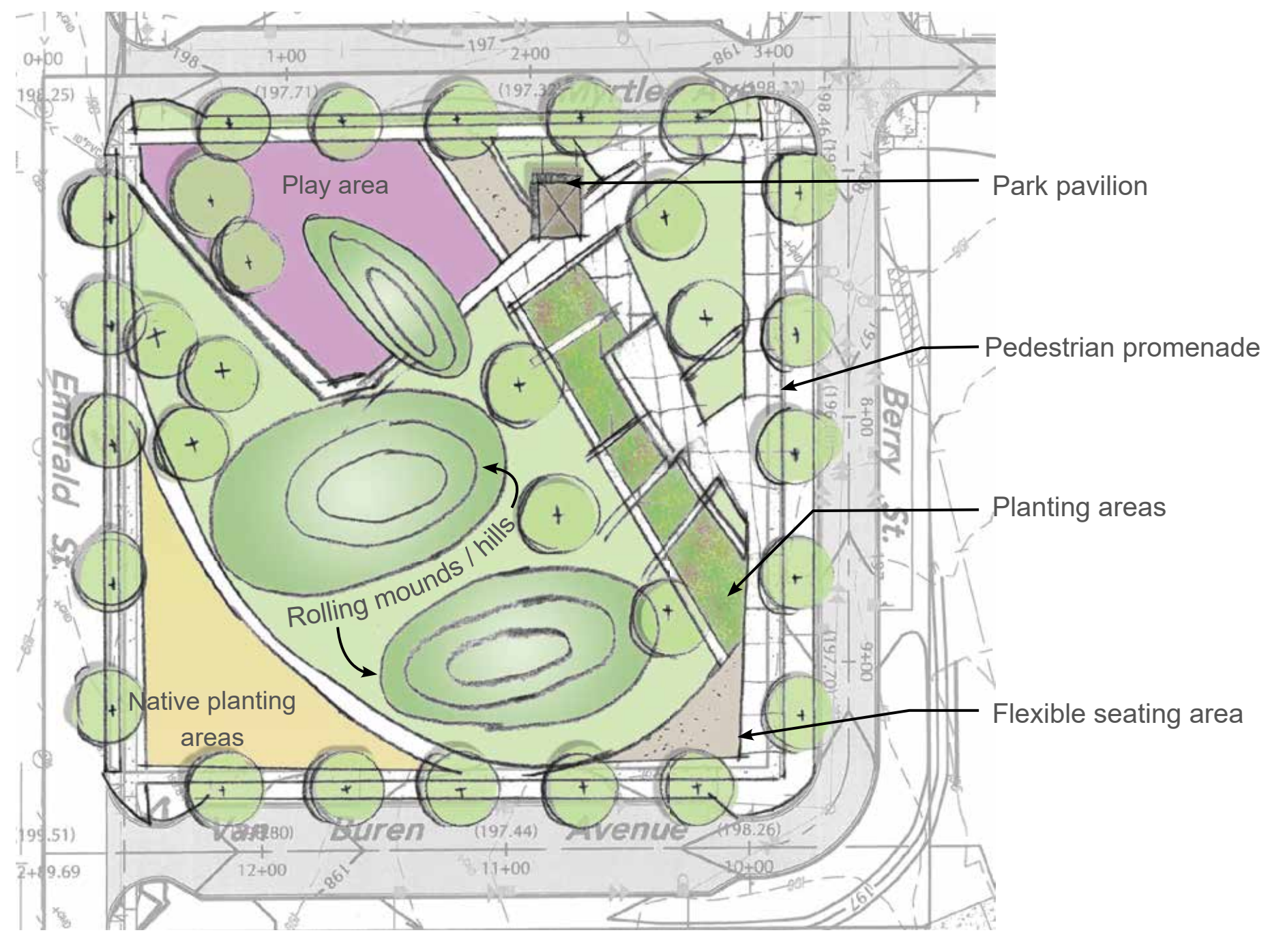
FEEDBACK ON VISION PARK CONCEPTS



CONCEPT A



CONCEPT B



DESIGN DEVELOPMENT

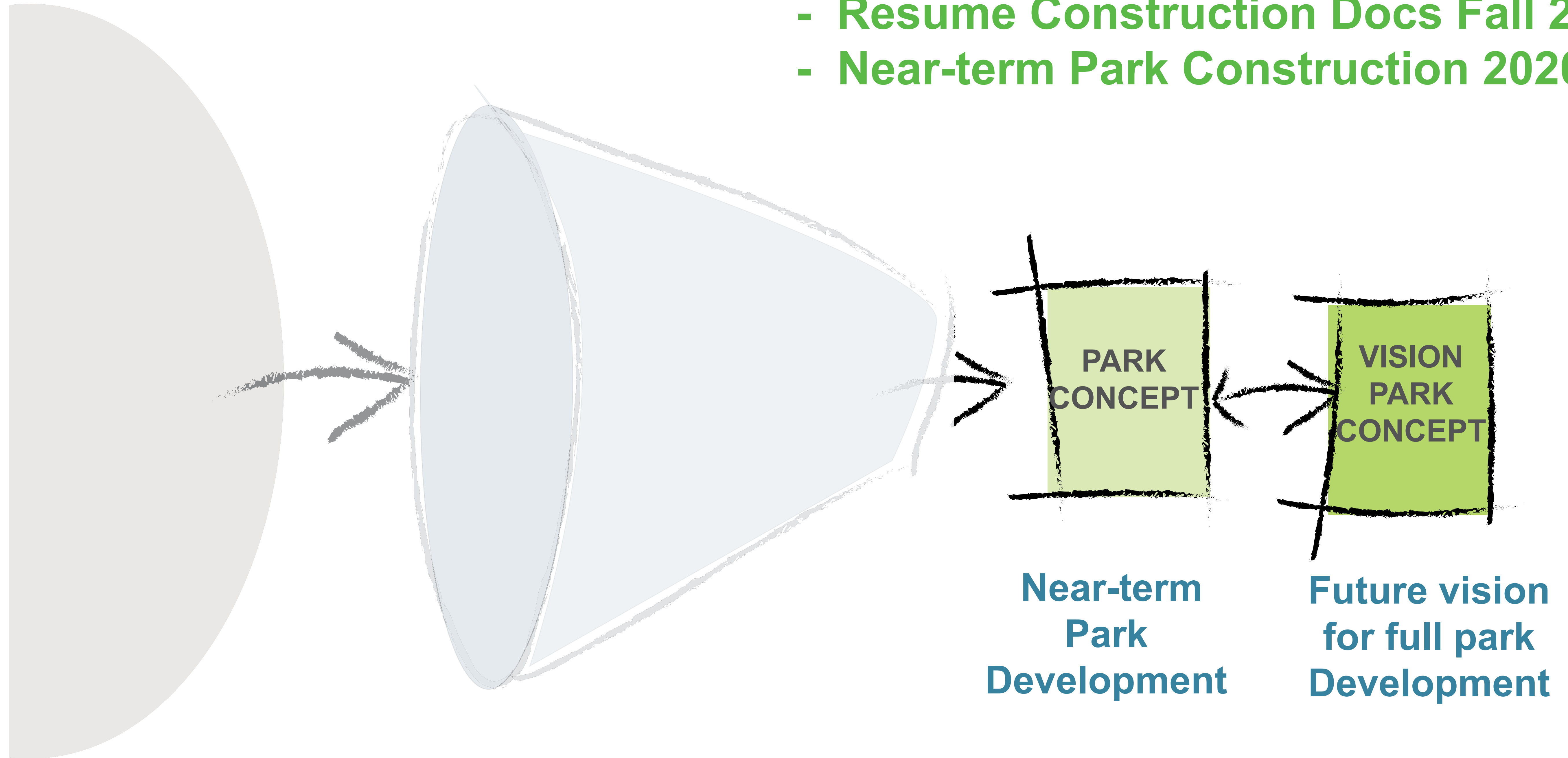


WHERE WE'VE BEEN

WHERE WE ARE

WHERE WE'RE GOING

- Advance Joint Concept Plan
- Community Updates
- Resume Construction Docs Fall 2019
- Near-term Park Construction 2020



NEXT STEPS...





LAND USE COMMITTEE MEETING
St. Anthony Park Community Council
December 6th, 2018

NEW PARK AT WESTGATE

