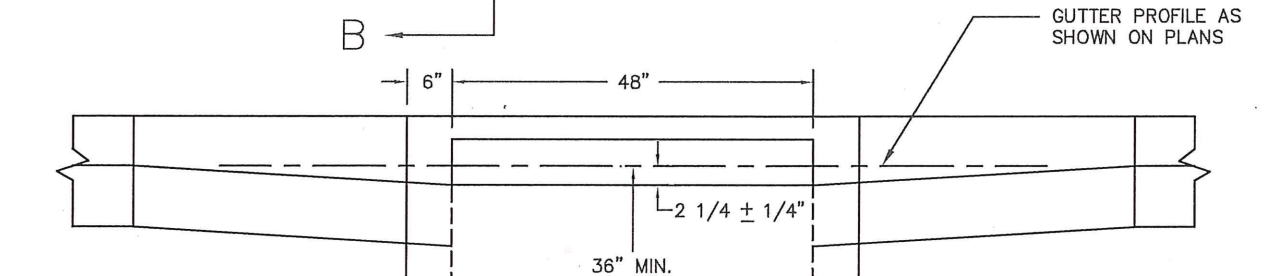
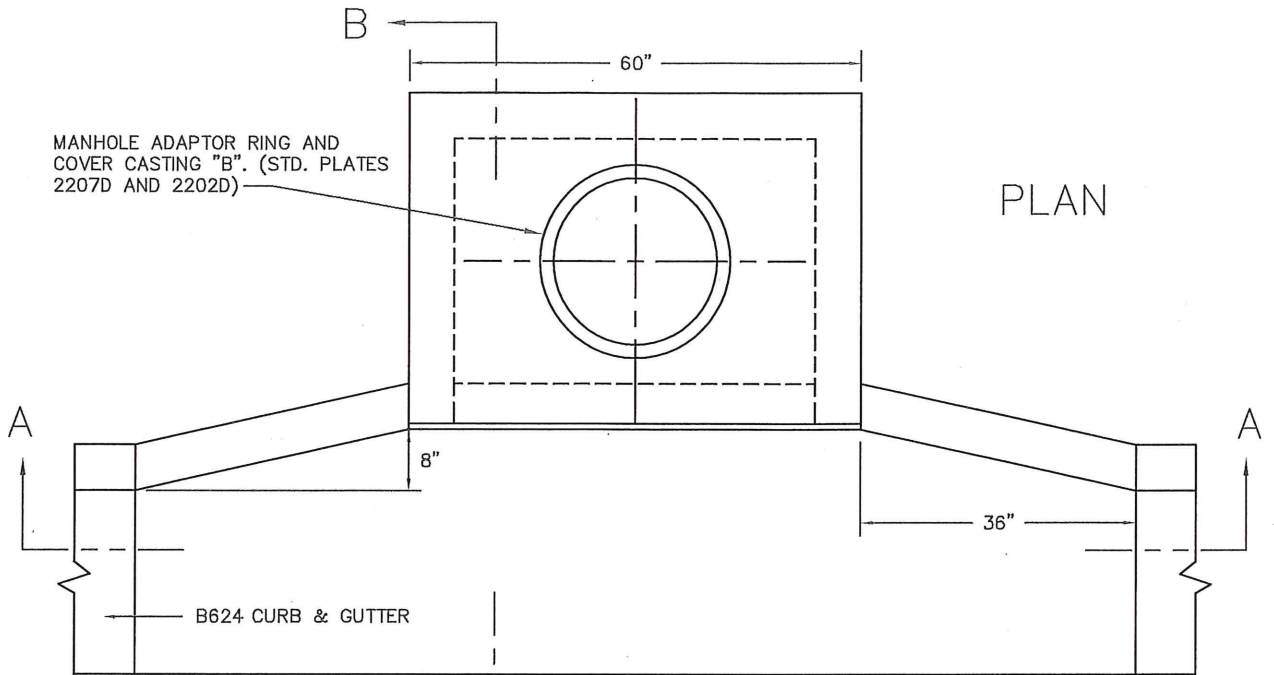


MANHOLE ADAPTOR RING AND COVER CASTING "B". (STD. PLATES 2207D AND 2202D)

PLAN



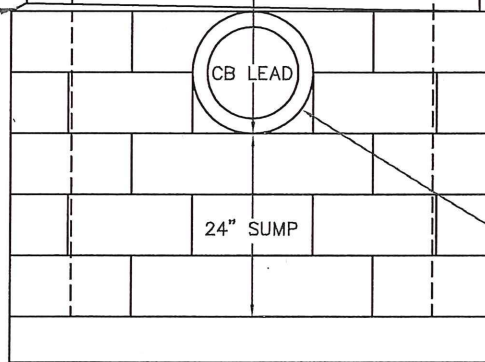
SHIM PRECAST UNIT AS REQ. TO MATCH GUTTER GRADE. 1/2" MORTAR JOINT.

8" X 8" X 16" OR 6" X 8" X 16" SOLID CONCRETE MASONRY UNIT (REFER TO SPECIFICATION SECTION 2506 OF THE ST. PAUL SUPPLEMENTAL SPECIFICATIONS AND ASTM C139) ALL JOINTS SHALL BE 3/8" THICK AND FILLED COMPLETELY WITH MORTAR

SECTION A-A

NOTES:

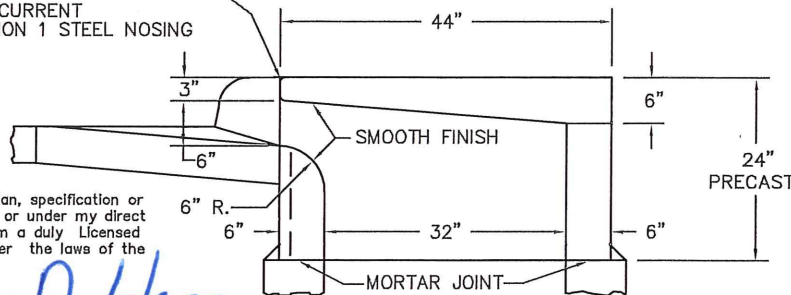
1. PRECAST UNIT SHALL CONFORM TO MN/DOT STD. PLATE 4021F OR CURRENT EXCEPT FOR MANHOLE RING AND COVER
2. FOR USE WITH B624 CURB & GUTTER
3. TO BE USED ONLY WHERE MAJOR UTILITY CONFLICT PROHIBITS USE OF TYPE 7A CATCH BASIN



MN/DOT STD. PLATE 4021J OR CURRENT OPTION 1 STEEL NOSING

6" X 5'-4" X 4'-0" PRECAST BASE

SECTION B-B



I hereby certify that this plan, specification or report was prepared by me or under my direct supervision and that I am a duly Licensed Professional Engineer under the laws of the State of Minnesota

*Aaron D. Hass*  
AARON D. HASS

Date 01-24-2017 Lic. No. 26424

APPROVED *2-2-2017*  
*Taylor N. Kurt*  
CITY ENGINEER

CITY OF ST. PAUL  
DEPARTMENT OF PUBLIC WORKS

CATCH BASIN, TYPE 2A

Date of Revision  
JAN. 2017

Standard Plate No.  
2003F