

Sam Morgan Regional Trail Segments 1 and 4 Reconstruction

Transportation Committee Update | October 2023



SAINT PAUL
MINNESOTA

PARKS AND RECREATION DEPARTMENT
DESIGN AND CONSTRUCTION DIVISION

SAM MORGAN REGIONAL TRAIL RECONSTRUCTION



MARCH APRIL MAY JUNE JULY AUGUST SEPTEMBER OCTOBER NOVEMBER DECEMBER JANUARY FEBRUARY MARCH APRIL MAY JUNE JULY AUGUST

PROJECT START

GRAND OPENING

WE ARE HERE

INVENTORY AND ANALYSIS

DESIGN DEVELOPMENT
30% PLANS 60% PLANS 90% PLANS 100% PLANS

CONSTRUCTION DOCUMENTS

REVIEWS/ APPROVALS

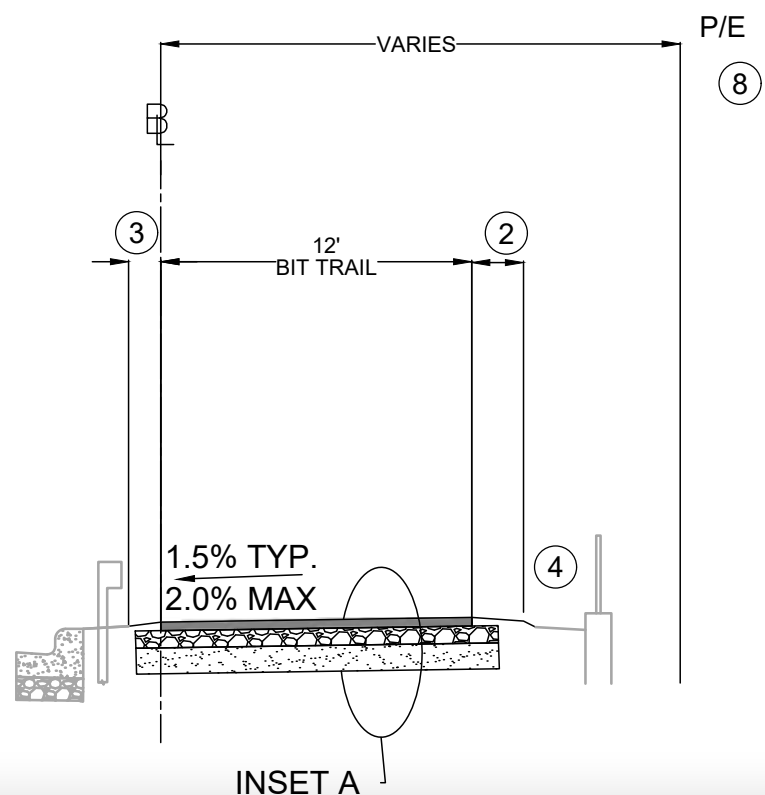
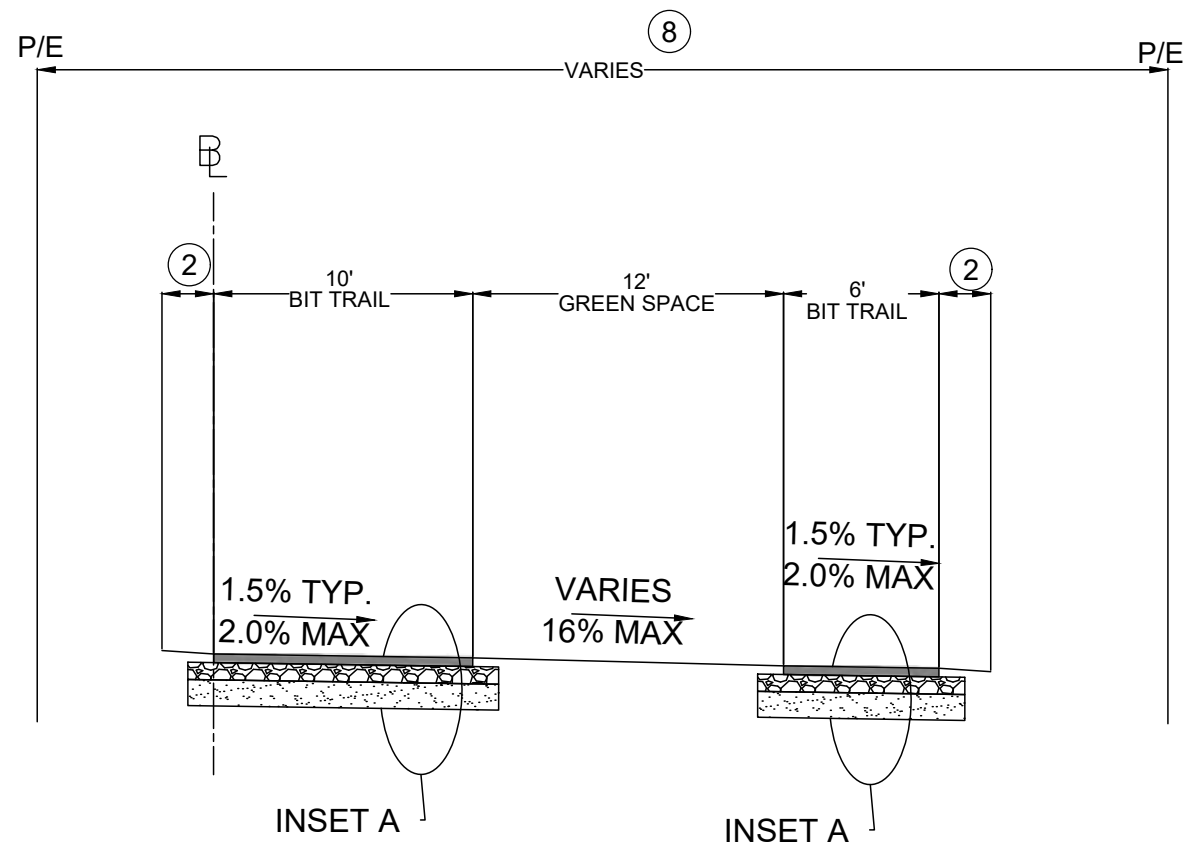
BIDDING/ CONTRACTING

CONSTRUCTION

Trail Overview



Trail Details



Separated Trails

10' Two-way bike trail
5' Two-way pedestrian trail

Combined Trails

12' Two-way trail for bicyclists and pedestrians

Other conditions

Some sections of trail will be no less than 10' where conditions (guardrail, slopes, etc) don't permit wider trails

Section of trail along Shepard Road will be a 12' combined trail to eliminate fencing requirement.

Trail - Highlight areas



35E underpass

Add lighting in tunnel

Remove excess pavement - restore with turf and add trees

Trail - Highlight areas



Otto Avenue

- Add 6' concrete walk around greenspace
- Selective clearing for views
- Benches
- Replace drinking fountain
- Interpretive signage
- Additional tree planting
- Update APS signal at Shepard/Otto
- Evaluating bumping out curb to shorten pedestrian crossing

Trail - Highlight areas

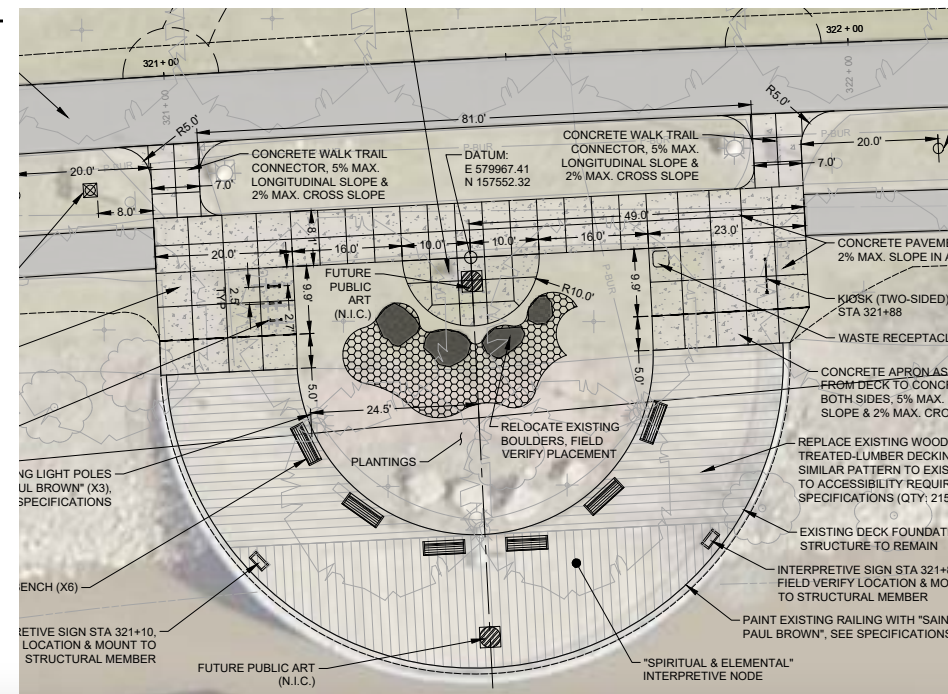
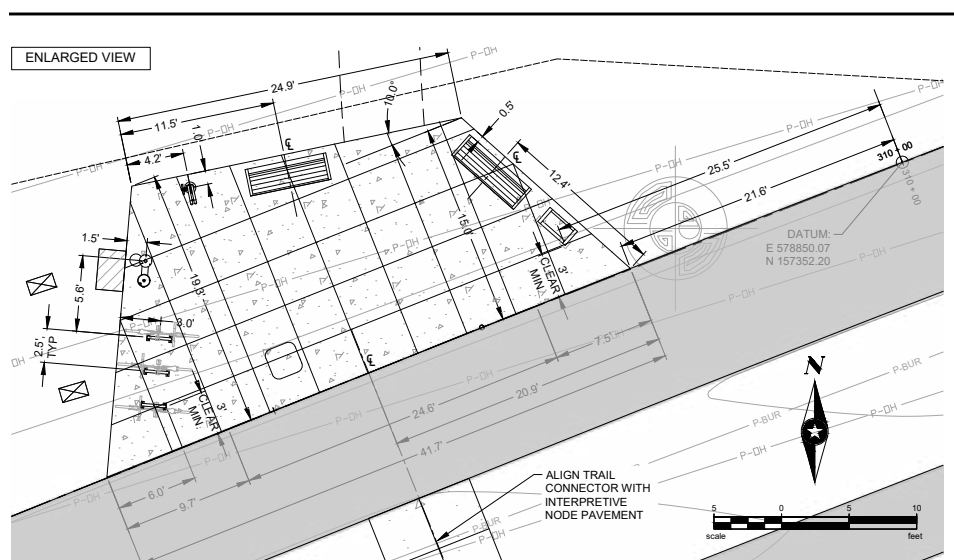


Lower Landing

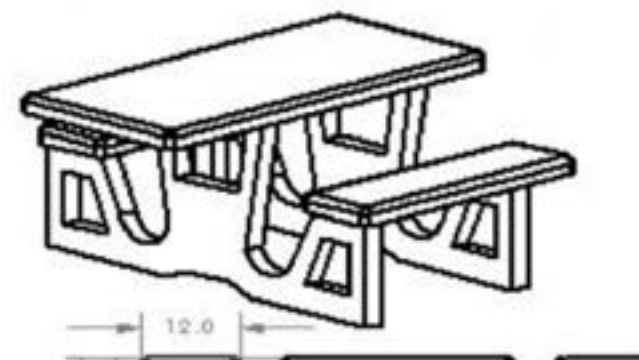
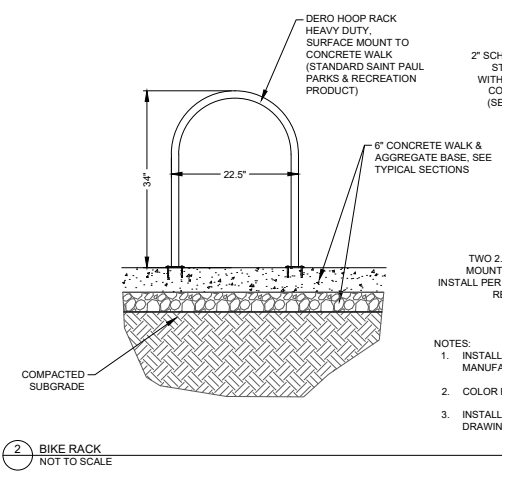
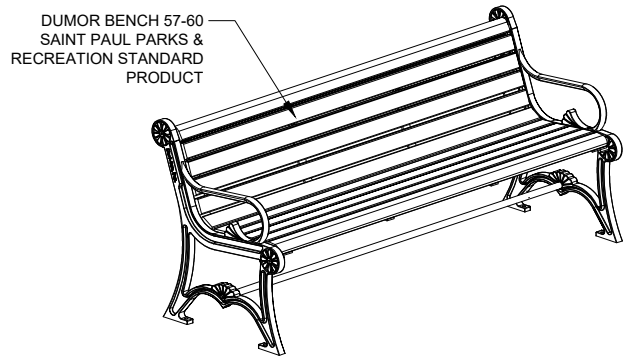
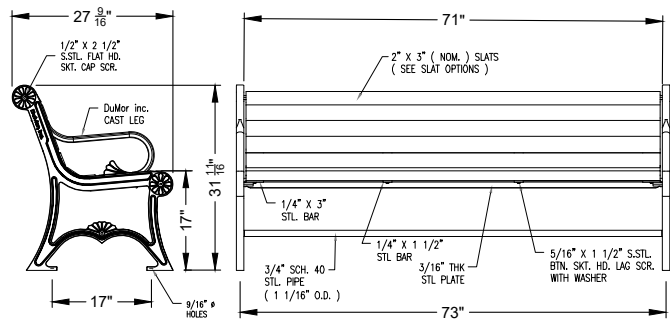
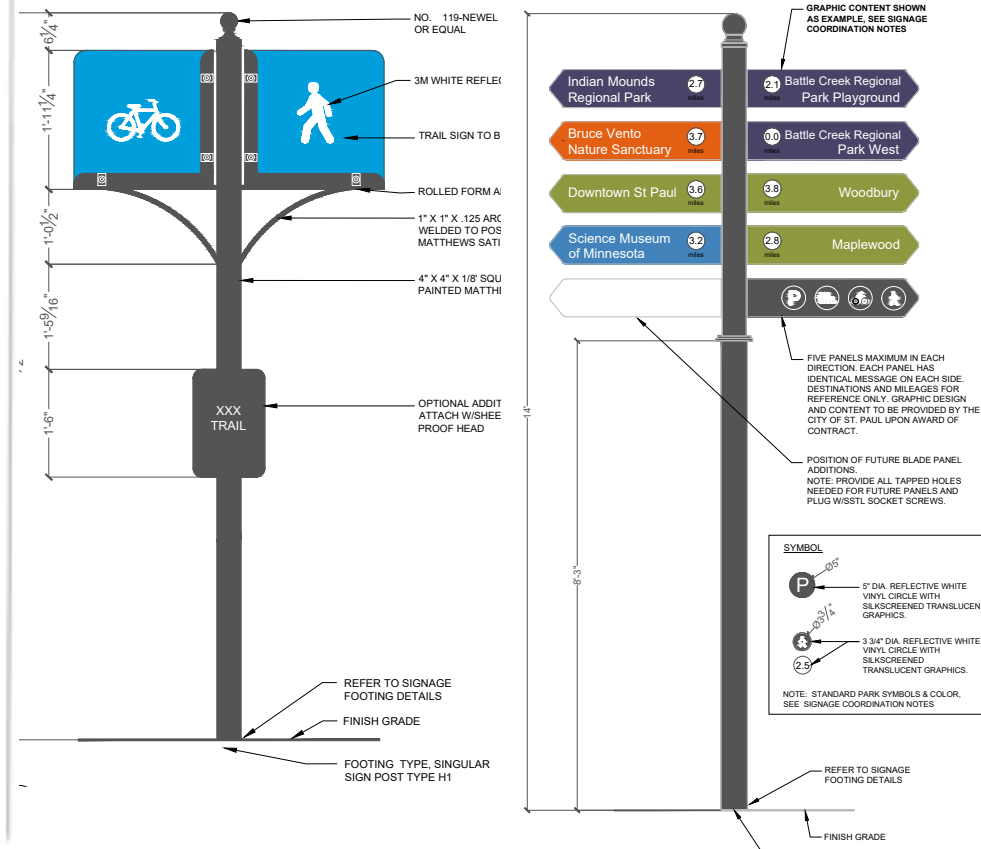
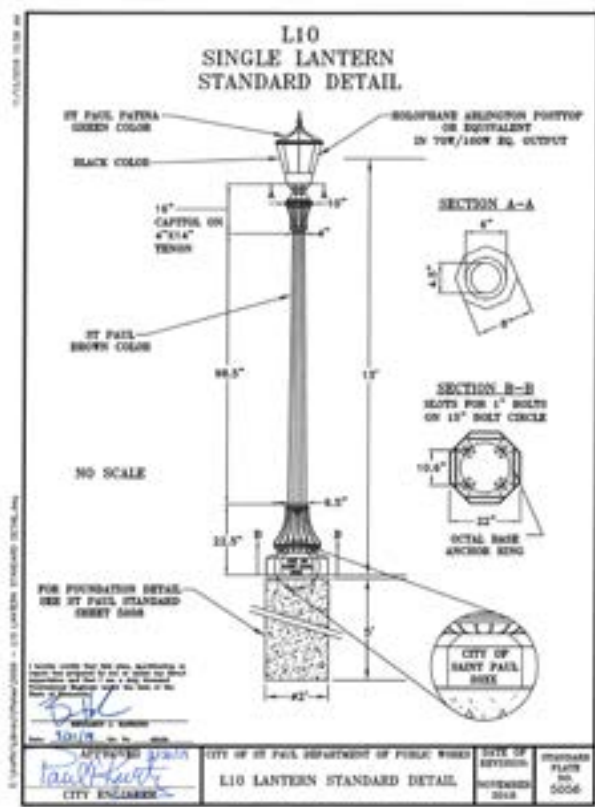
Add Nodes

- Benches
- Bike racks
- Interpretive signage
 - + Park overview
 - + Community
 - + Transportation
 - + River/water
 - + Spirituality
 - + Geology
 - + Ecology

Additional tree planting



Trail Amenities



Amenities

Lighting

- Standard St. Paul Pathway lighting
- High Access Hand Hole to reduce likelihood of wire theft

Signage

- Trail signs
- Trail directional signs
- Interpretive signage

Benches

- Standard park bench with metal ends and recycled slats

Bike racks

- Hoop racks

Picnic Tables

- Standard Park concrete picnic table

Drinking Fountains

Landscaping

Thank you - questions?



SAINT PAUL
MINNESOTA

PARKS AND RECREATION DEPARTMENT
DESIGN AND CONSTRUCTION DIVISION

SAM MORGAN REGIONAL TRAIL RECONSTRUCTION

