



Duluth and Case Recreation Center Play Area Improvements

August 2023



SAINT PAUL
MINNESOTA

PARKS AND RECREATION DEPARTMENT
DESIGN AND CONSTRUCTION DIVISION

**DULUTH AND CASE RECREATION CENTER PLAY AREA
PAYNE-PHALEN COMMUNITY COUNCIL MONTHLY MEETING
AUGUST 2023**

TODAY'S AGENDA

WHERE WE'VE BEEN

**Community Engagement
and Design Development**

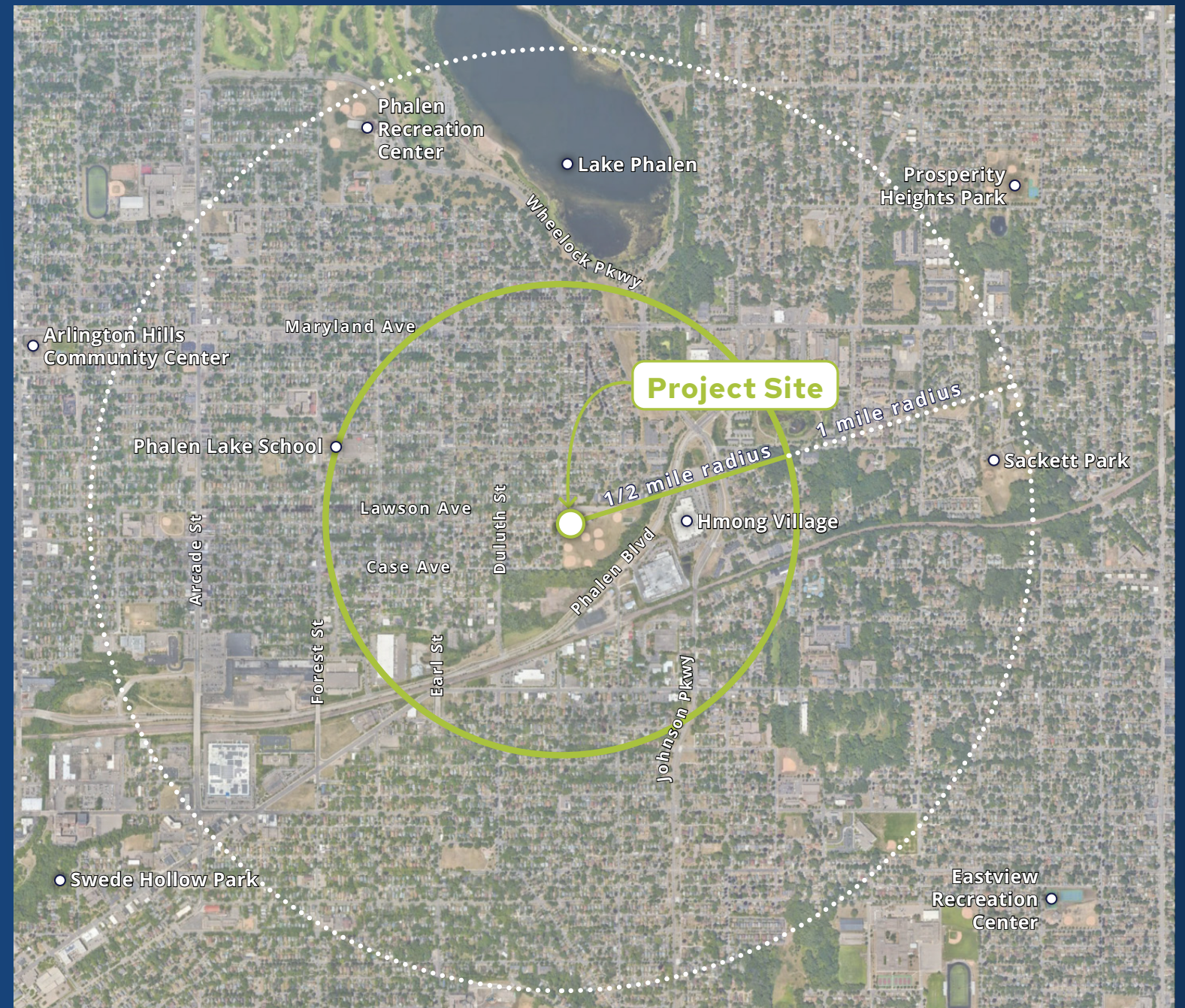
WHERE WE ARE

**Play Area Concept
and Equipment**

WHERE WE'RE GOING

**Ongoing Project Process
and Construction**

PROJECT COMPLETION



Project Overview

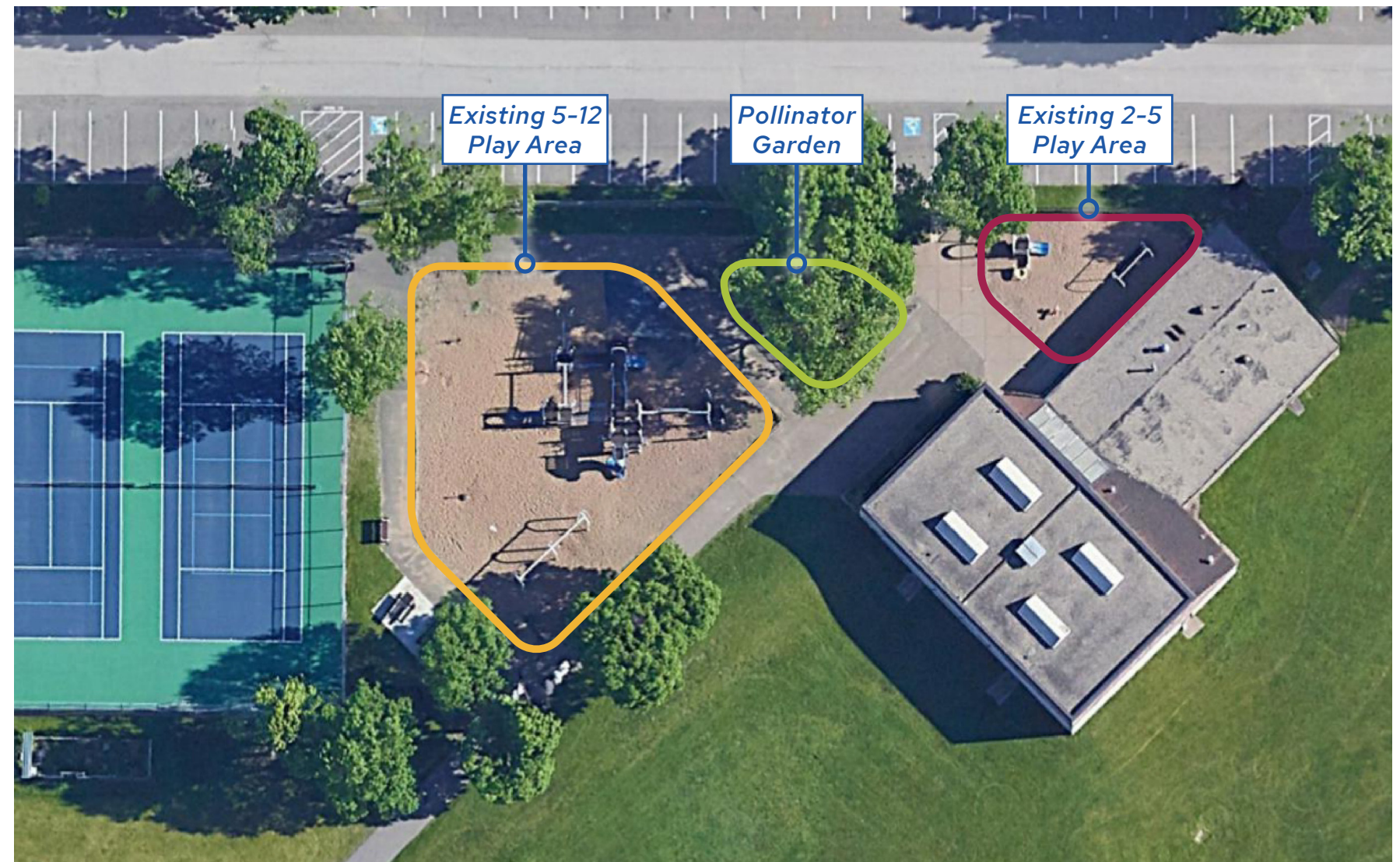
Play Area Renovation will include:

- New Play Equipment
- Play Surfacing
- Site Furnishings*
- Landscaping*

**As budget allows*

Note: Renovation of the Recreation Center is not included in the scope of this project.

Existing Play Area



WHERE WE'VE BEEN: Community Engagement

ENGAGEMENT EVENTS

- Dinner with Santa at Duluth and Case
- Holiday Outdoor Fun and Games at Duluth and Case
- Project website with online survey
- "Rec Check" after school engagement with kids
- Safe Summer Nights at Duluth and Case



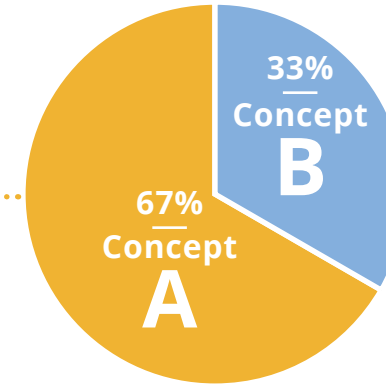
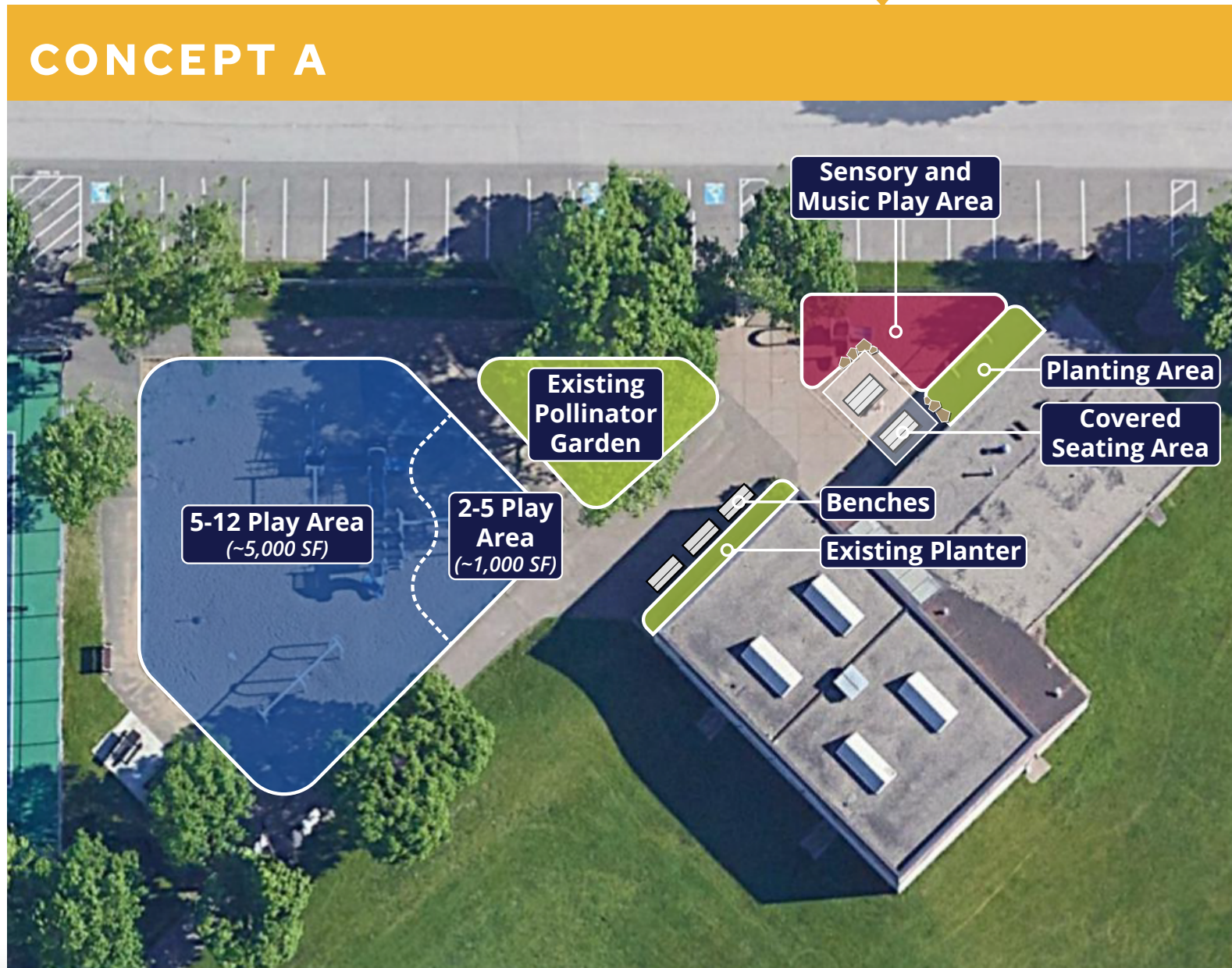
OVERALL FEEDBACK THEMES

- Existing play area seems old - desire for new equipment including big slides, ziplines, swings, and more preschool equipment.
- Preferred concepts that allowed for easier supervision of multiple age groups
- Desire for mulch play surface
- Desire for more shade and seating
- Desire for additional greenspace

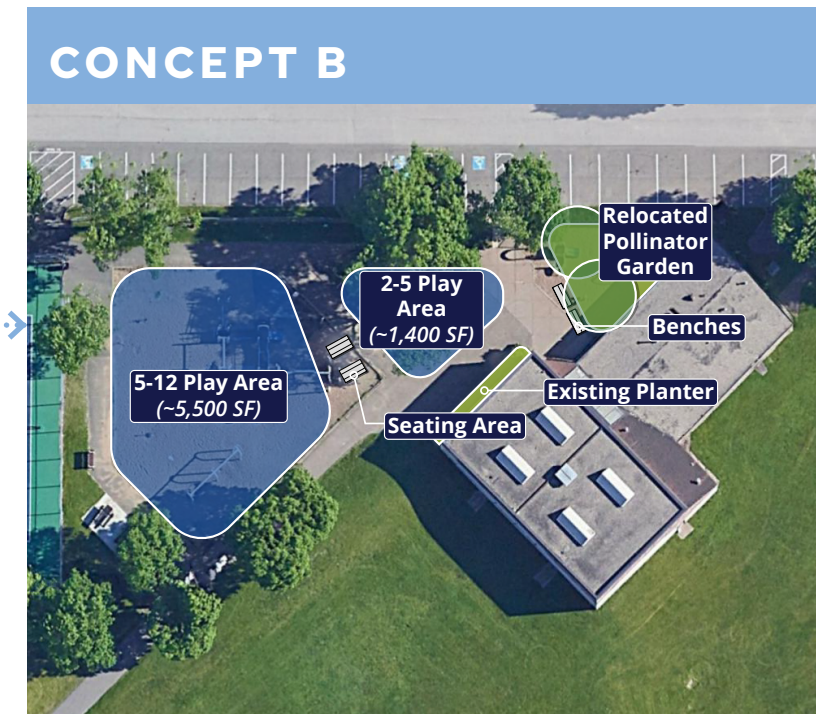
WHERE WE'VE BEEN: Community Engagement

SURVEY #2 DECEMBER 2022 - FEBRUARY 2023

CONCEPT A



CONCEPT B



What do you like about Concept A?

- Play areas close to one another so supervision of multiple age children is easier
- Covered seating area
- Layout and seating options
- Makes good use of space; seems visually appealing

What do you like about Concept B?

- Pollinator Garden location
- More play area
- The parent bench is in the middle of the play areas

WHERE WE'VE BEEN: Community Engagement

REC CHECK FEEDBACK | APRIL 2023

EQUIPMENT | CONCEPT A



EQUIPMENT | CONCEPT B

Students generally preferred Concept B, with some components from Concept A



WHERE WE ARE: Play Area Concept and Equipment



WHERE WE ARE: Play Area Concept and Equipment



VIEW OF PLAY AREA FROM THE WEST



WHERE WE ARE: Play Area Concept and Equipment



WHERE WE'RE GOING: Ongoing Project Process and Construction

PROJECT TIMELINE

WHERE WE'VE BEEN



WHERE WE ARE



WHERE WE'RE GOING



2023

2024

WINTER

SPRING

SUMMER

FALL

WINTER

SPRING

SUMMER

Inventory, Analysis, and Research

Schematic Design

Design Development

Construction Documents

Bidding

Construction

Dinner with Santa
Holiday Fun and Games Event

Rec Check
Engagement with Students

Safe Summer
Nights Event

August PPCC Meeting

Target Opening Date - Summer 2024

WE ARE HERE

WHERE WE'RE GOING: Ongoing Project Process and Construction

PUBLIC ART IDEAS

What we heard from community members:

Please list any public artists, art themes, or art items you'd like to see incorporated into the play area:

- Botany/pollinator theme
- Indigenous artists, artists of color, earth artists, art with a POSITIVE message
- Hmong and/or African American Art
- Mural
 - ◇ It would be nice to see a children's mural on the building
 - ◇ I think we should do a mural
 - ◇ Multicultural mural of children playing together with a positive vibe and bright colors



NEXT STEPS

- Continue engagement through project website and community outreach
- Continue public art process
- Identify project priorities that align with available funding
- Develop Construction Documents
- Bidding/Construction 2023-2024
- Target Opening Date Summer 2024

Stay Engaged!

Check out the project website
for information and updates:

<https://www.stpaul.gov/departments/parks-and-recreation/design-construction/current-projects/play-area-projects>



Katie Hamerlinck (she/her)

Landscape Architect | Project Manager

City of Saint Paul Parks and Recreation

katie.hamerlinck@ci.stpaul.mn.us |

651.266.6414

