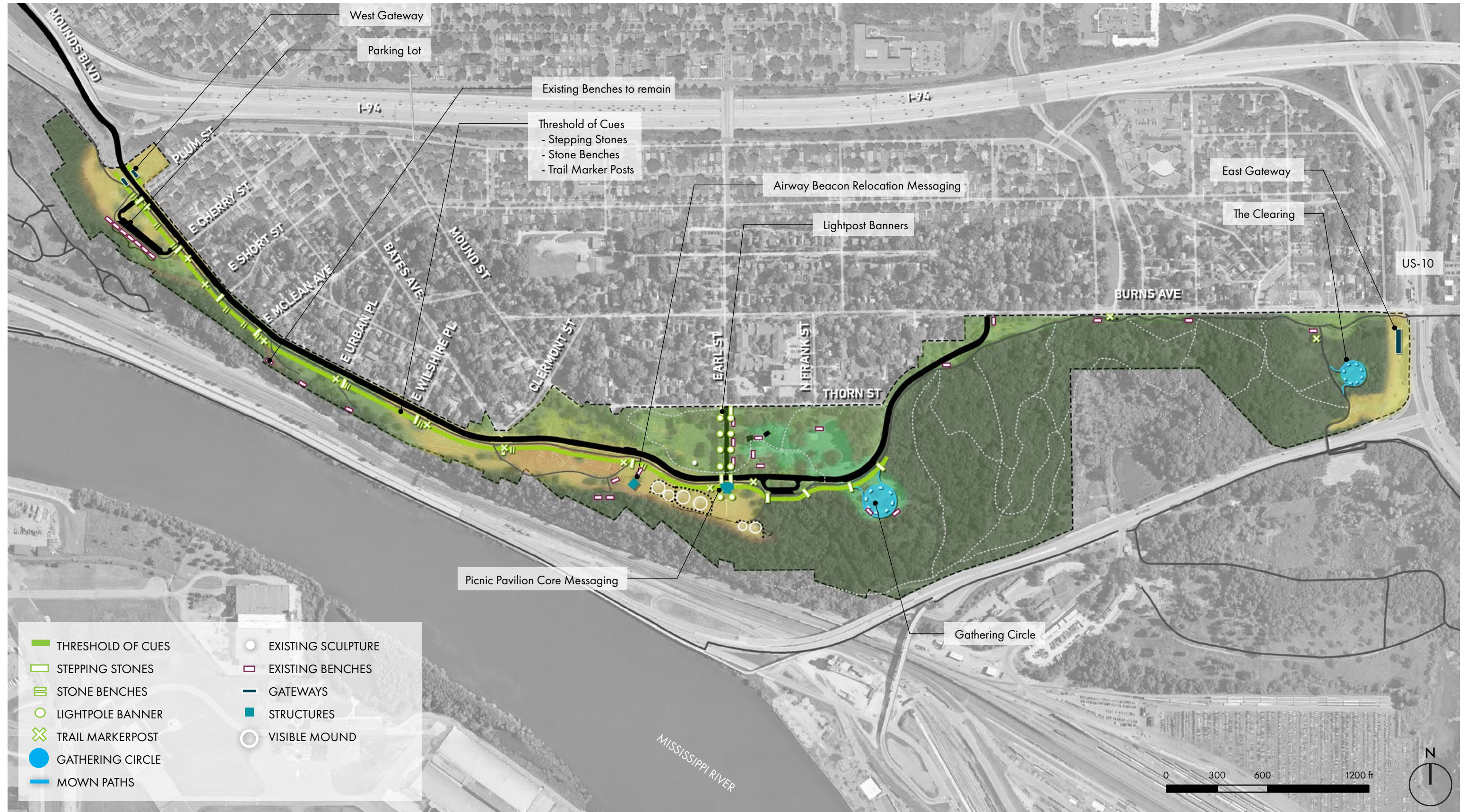


PHASE 1 MESSAGING / CLS PROPOSED FEATURES



PHASE 1 MESSAGING / PROPOSED FEATURES



- 1 THRESHOLD OF CUES - PLANTING
- 2 THRESHOLD OF CUES - MESSAGING
- 3 GATHERING CIRCLE
- 4 GATEWAYS

PHASE 1 MESSAGING / PROPOSED FEATURES



1. THRESHOLD OF CUES:
PLANTING



2. THRESHOLD OF CUES:
MESSAGING

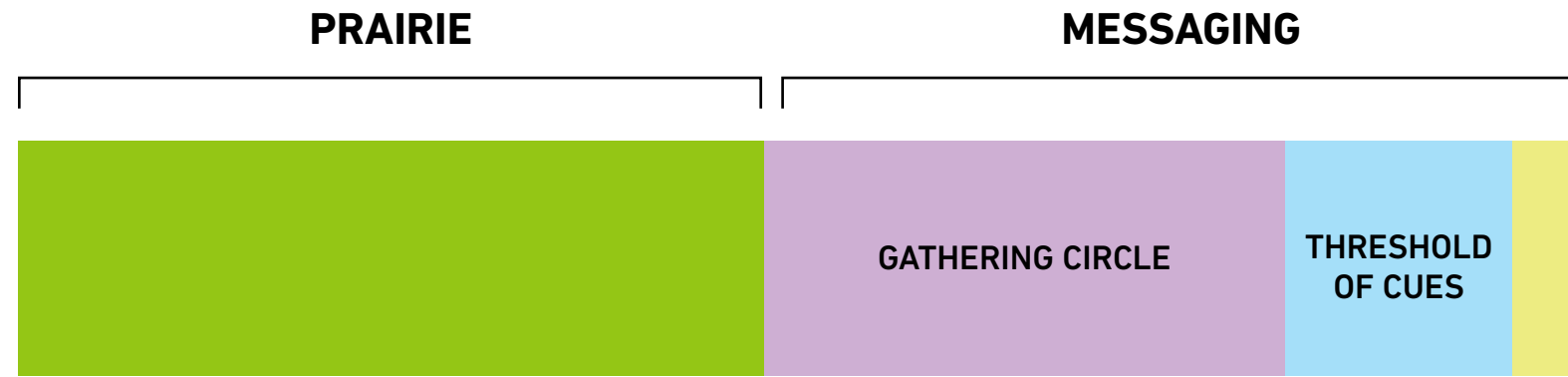


3. GATHERING CIRCLE



4. GATEWAYS

PHASE 1 MESSAGING / PROPOSED FEATURES

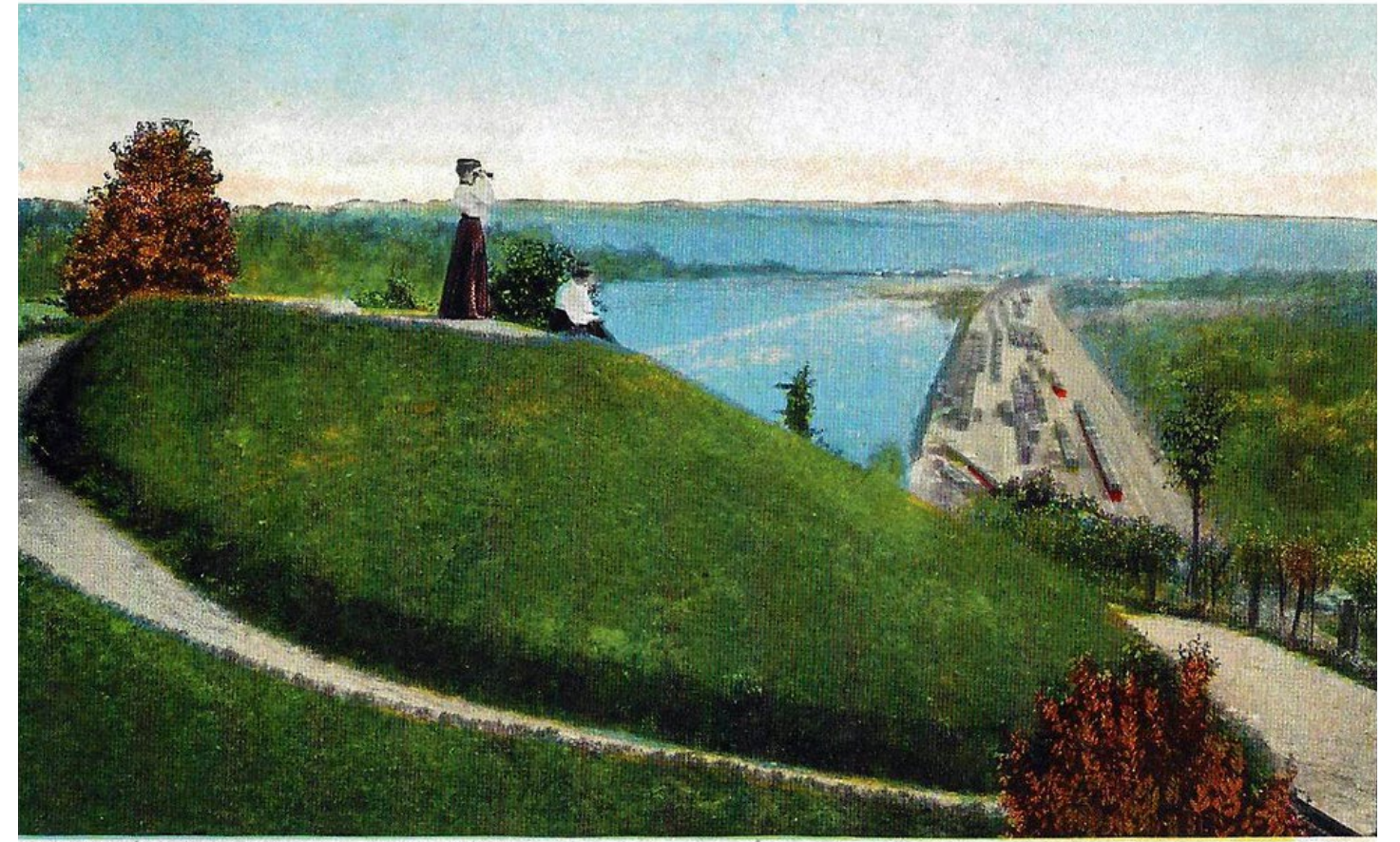


50 / 50 APPROACH
approach preferred by THPOs

WHY PRAIRIE RESTORATION MATTERS



PRE-SETTLEMENT PRAIRIE



INDIAN MOUND PARK, ST. PAUL, MINN.

20TH CENTURY



You are in
a cemetery.

THIS IS A CEMETERY
INDIAN MOUNDS PARK
CITY OF SAINT PAUL
DIVISION OF PARKS AND RECREATION



WHY PRAIRIE RESTORATION MATTERS

1. THIS IS A SACRED BURIAL PLACE

Prairie re-establishment acknowledges the sacredness of this site, honoring what was here historically and acknowledging the destruction that has occurred over time

2. CHANGING PERCEPTION

One of the key goals of messaging for the CLS was to help change perception of this site from a park to a cemetery, with prairie reestablish as central to that messaging

3. DAKOTA GUIDANCE

The recommendation and preference from the THPO's has been to prioritize the introduction of prairie

ADDRESSING KEY CONCERNS

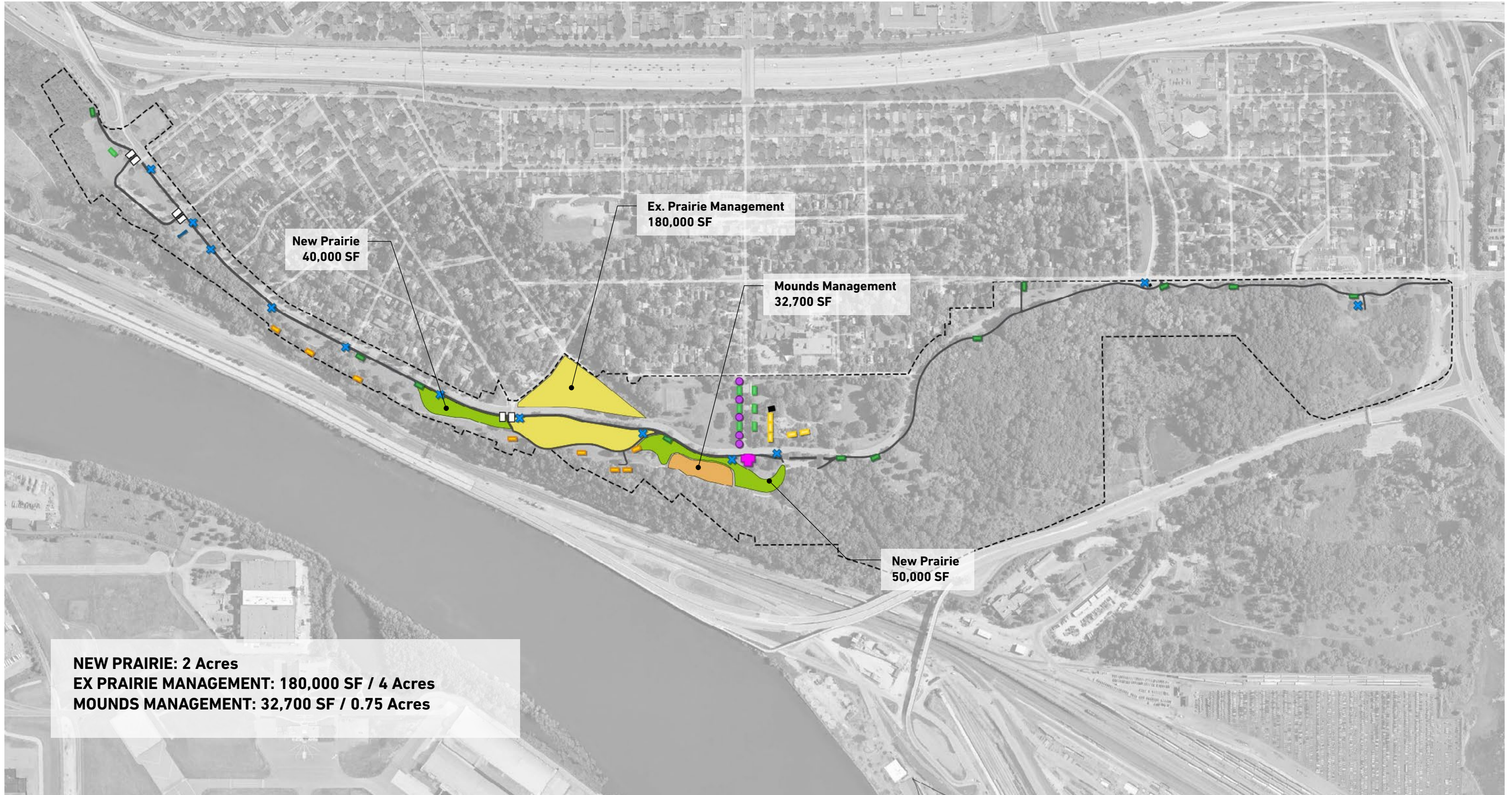
1. MAINTENANCE

The project proposes a plan for long term maintenance including clear guidance and reserved funding for 3 year warranty and maintenance of existing prairie

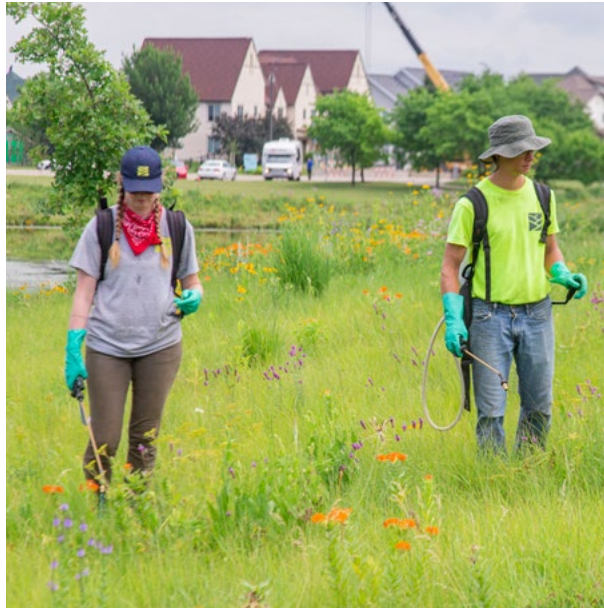
2. LOSS OF RECREATION SPACE

Proposed prairie removes underutilized lawn, but creates new concentrated and beautiful public gathering spaces

PHASE 1 MESSAGING / PRAIRIE RESTORATION



PRAIRIE RESTORATION / PREFERRED APPROACH



SITE PREP
Herbicide applied through several applications in fall prior to planting



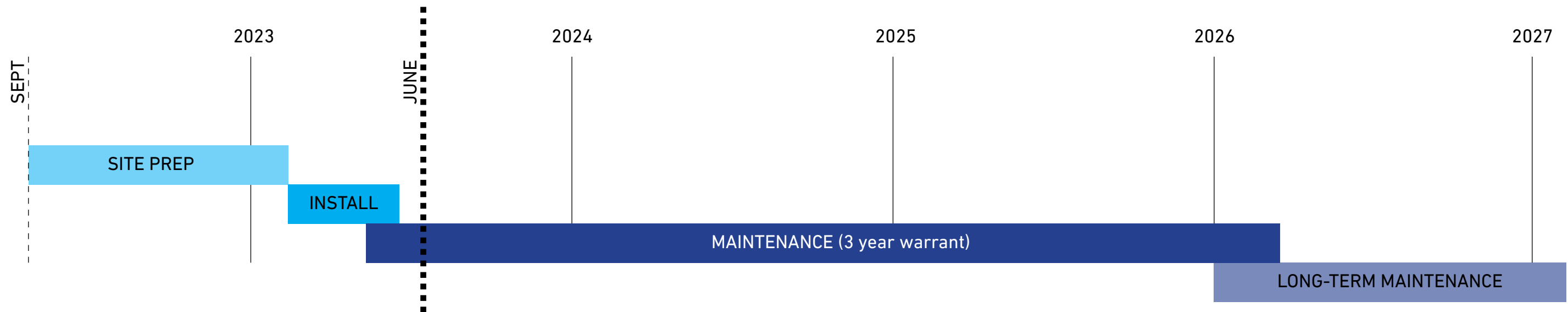
INSTALL
Drill into sprayed turf with little to no soil disturbance (2" drill)- Light Harrow if needed in areas inaccessible to Drill



Plugs interspersed with seed mix



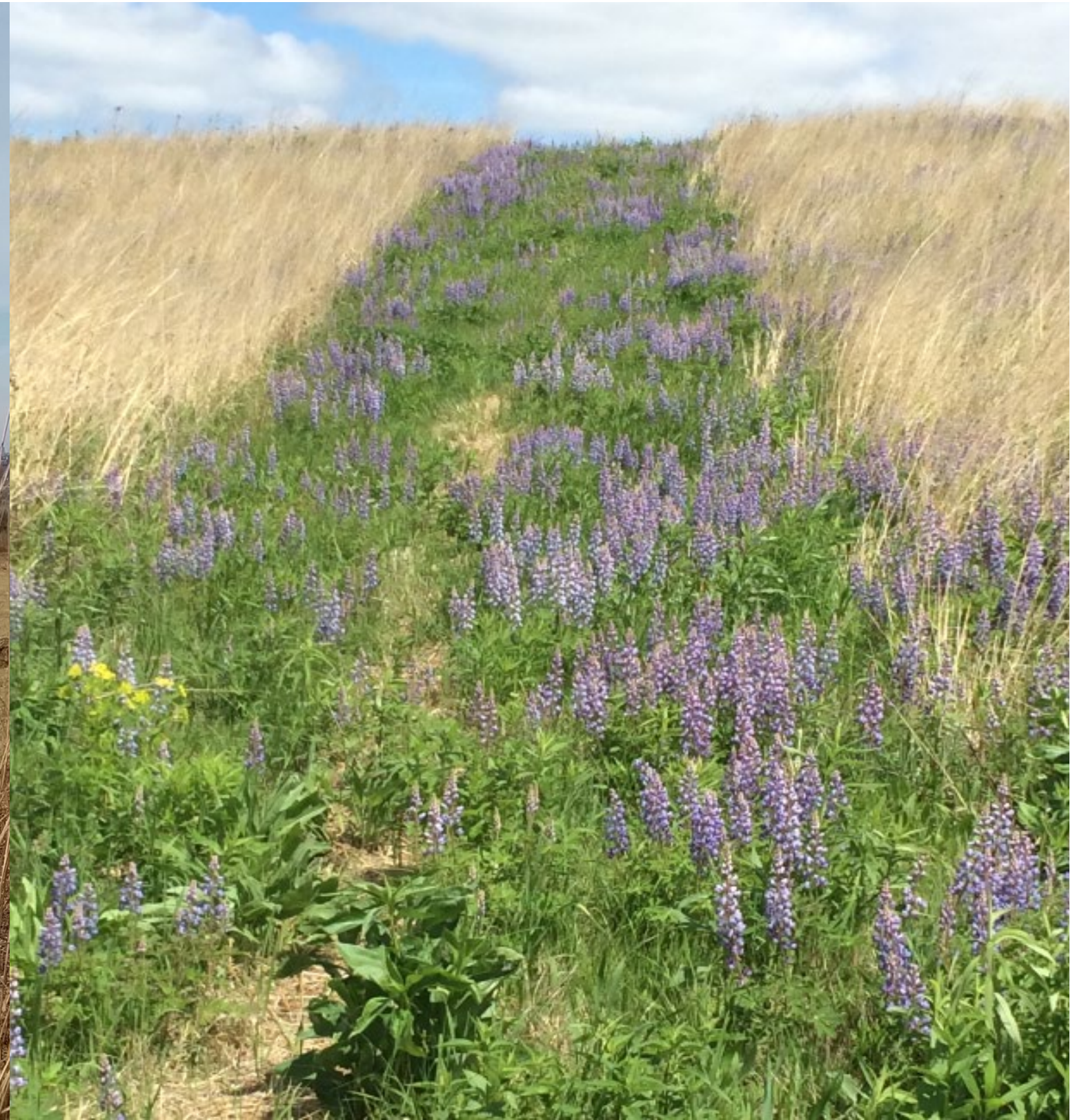
MAINTENANCE
Annual controlled burns, hand weeding, mowing, and occasional herbicide



PRAIRIE RESTORATION / MAINTENANCE APPROACHES



Pilot Knob haying



Positive impacts of haying

PRAIRIE RESTORATION / MAINTENANCE APPROACHES

Maintenance for reduced disturbance



Prairie grazing



Soil cover and erosion control



Haying machine



Braemar lost disturbance seeding



Haying effects



Hayed vs. Unhayed

PRAIRIE RESTORATION / PRAIRIE SEED MIX

PERENNIALS

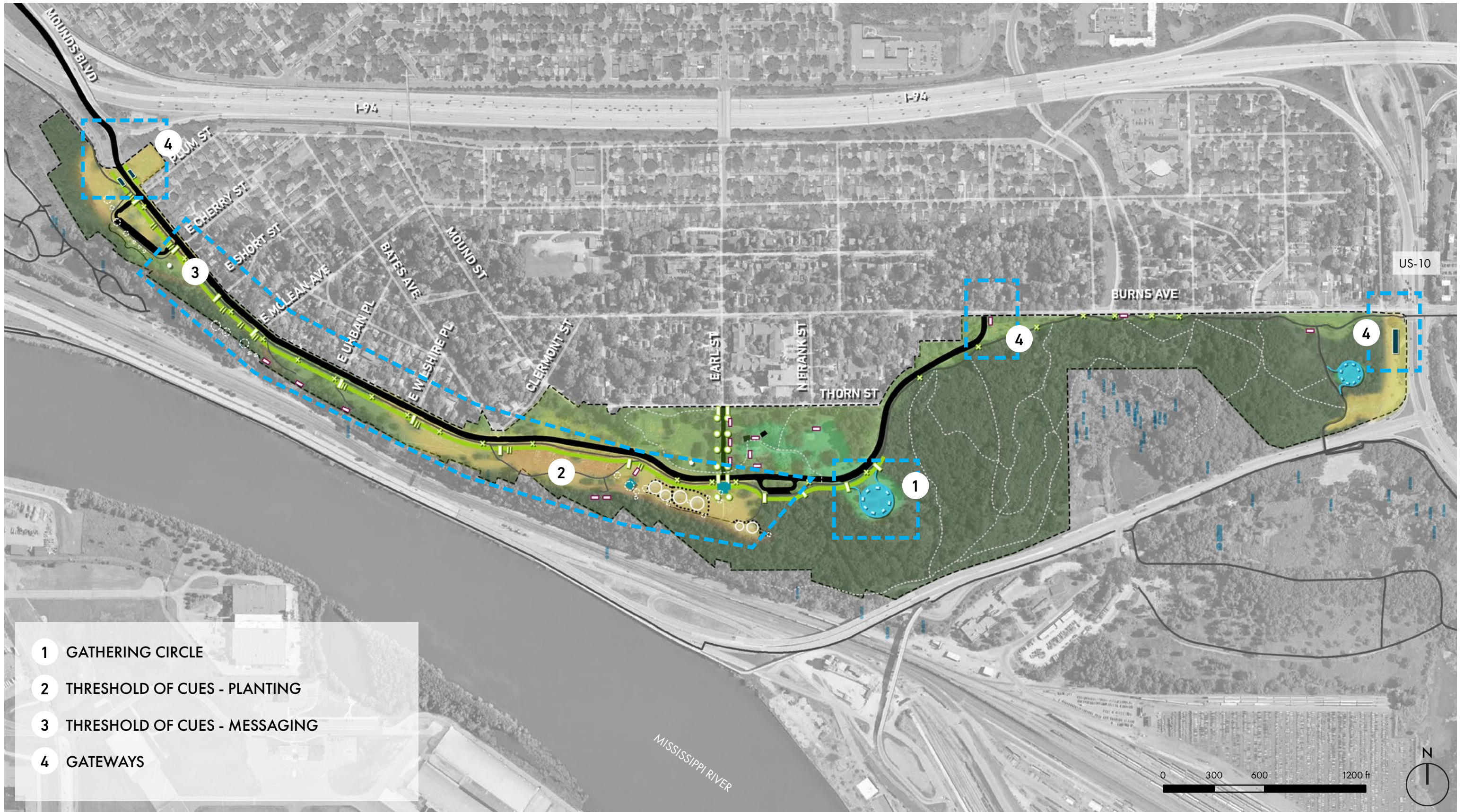
- Yarrow
- Fragrant Hyssop
- Leadplant
- Prairie Sage
- Common Milkweed
- Butterflyweed
- Canada Milkvetch
- White Wild Indigo
- Partridge Pea
- White Prairie Clover
- Purple Prairie Clover
- Prairie Cinquefoil
- Narrow-leaved Purple Coneflower
- Cream Gentian
- Maximilian Sunflower
- Common Oxeye
- Meadow Blazing Star
- Wild Lupine
- Round-headed Bush Clover
- Wild bergamot
- Spotted Beebalm
- Large-flowered Penstemon
- Mountain Mint
- Long-headed Coneflower
- Yellow Coneflower
- Prairie Rose
- Black-eyed Susan
- Early Figwort
- Compass Plant
- Gray Goldenrod
- Stiff Goldenrod
- Showy Goldenrod
- Smooth Aster
- Azure Aster
- New England Aster
- Western Spiderwort
- Blue Vervain
- Hoary Vervain
- Culver's Root
- Heart-leaved Alexanders

GRASSES

- Big Bluestem
- Sideoats Grama
- Blue Grama
- Plains Oval Sedge
- Canada Wild Rye
- Virginia Wild Rye
- June Grass
- Switchgrass
- Little Bluestem
- Indian Grass
- Prairie Dropseed



PHASE 1 MESSAGING / PROPOSED FEATURES



ADDITIONAL FEATURE STUDIES



1. GATHERING CIRCLE



2. THRESHOLD OF CUES:
PLANTING



2. THRESHOLD OF CUES:
MESSAGING



4. GATEWAYS

ADDITIONAL FEATURE STUDIES

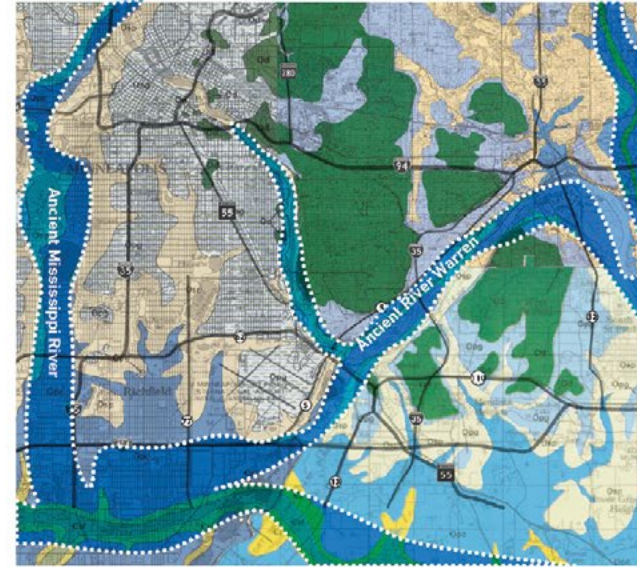
CLS Key Themes

GEOLOGIC TIME

Evidence of the events that shaped this valley is still visible in today's landscape. The Mississippi River has spent the last 12,000 years carving cliffs into the ancient rocks. These cliffs of soft, white sandstone (called the St. Peter Sandstone) are the lithified remains of the expansive beaches of an Ordovician sea that covered the mid-west 450 million years ago. Deep time is at the surface, within view. The spiritual and cultural significance of this place is tied to the geology of the bluff — scrubbed by glaciers and worn by rivers and weather—in places, right through bedrock.

KEY SUBTHEMES + STORIES

- Imnīžaska, "White Cliffs" referring to the limestone + sandstone bluffs (erosion, scouring, carving, terracing of the bluffs and river valley over time)
- Glaciers and the River Warren
- Wakháŋ Thípi + the Spiritual Significance of Caves
- Influence on patterns of vegetation and landforms
- Floods creating/shaping the tectonics of the river valley
- Karst, Caves and Springs



Bedrock geology, ancient river



Wakháŋ Thípi

ECOSYSTEMS OF IMNĪŽASKA

The back and forth tension between natural systems and human intervention is easily observed in today's landscape. Two centuries ago, the river valley featured many different landscapes. On the high ground above the rivers there was a mix of upland prairie and small groves of bur oaks interspersed with brush prairie. In places there were probably thickets of shrubby dogwood, sumac, and edible fruits and nuts. Fires, occurring naturally or set by the Dakota, helped maintain this mix. In the river valley were well-developed floodplain forests. Extensive areas of wet prairie and marshlands surrounded shallow lakes and ponds.

KEY SUBTHEMES + STORIES

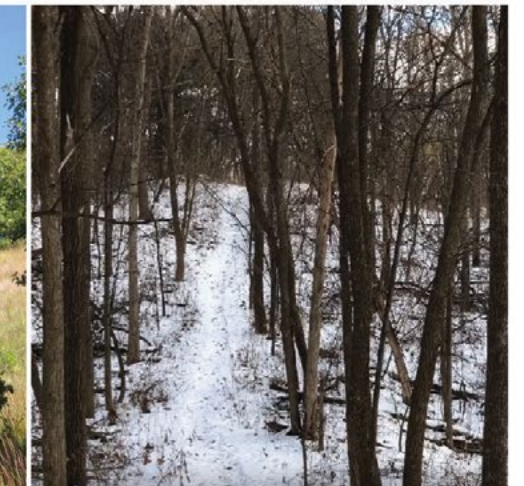
- Culturally Significant Plants (Protection, Healing, Sustenance)
- Native Habitat (Bluff and Floodplain)
- Altered Hydrology (streams, creeks and underground lakes)
- Historic Vegetation
- Human Effects on the River, Bluffs and Mounds
- Wood that fueled the river valley
- Pollution Sites



Tall Grass Prairie



Oak Savanna



Oak Basswood Forest

ADDITIONAL FEATURE STUDIES / RECLAIMED MATERIALS INVENTORY

Images from Historic Stone



Kasota Limestone



Limestone offcuts



Limestone offcuts



Limestone architecture pieces

ADDITIONAL FEATURE STUDIES / RECLAIMED MATERIALS INVENTORY

Images from Historic Stone



Circular stone



Large stone offcuts



Platteville Sandstone



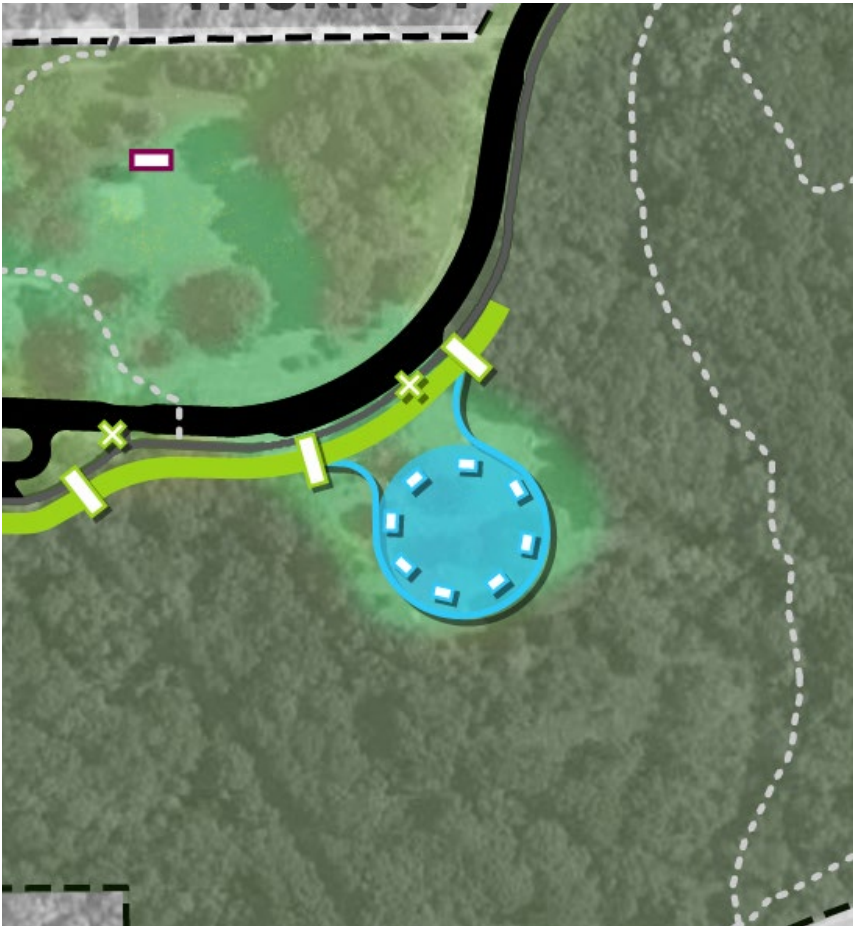
Limestone Boulders

ADDITIONAL FEATURE STUDIES / GATHERING CIRCLE

Proposed Gathering Circle from CLS



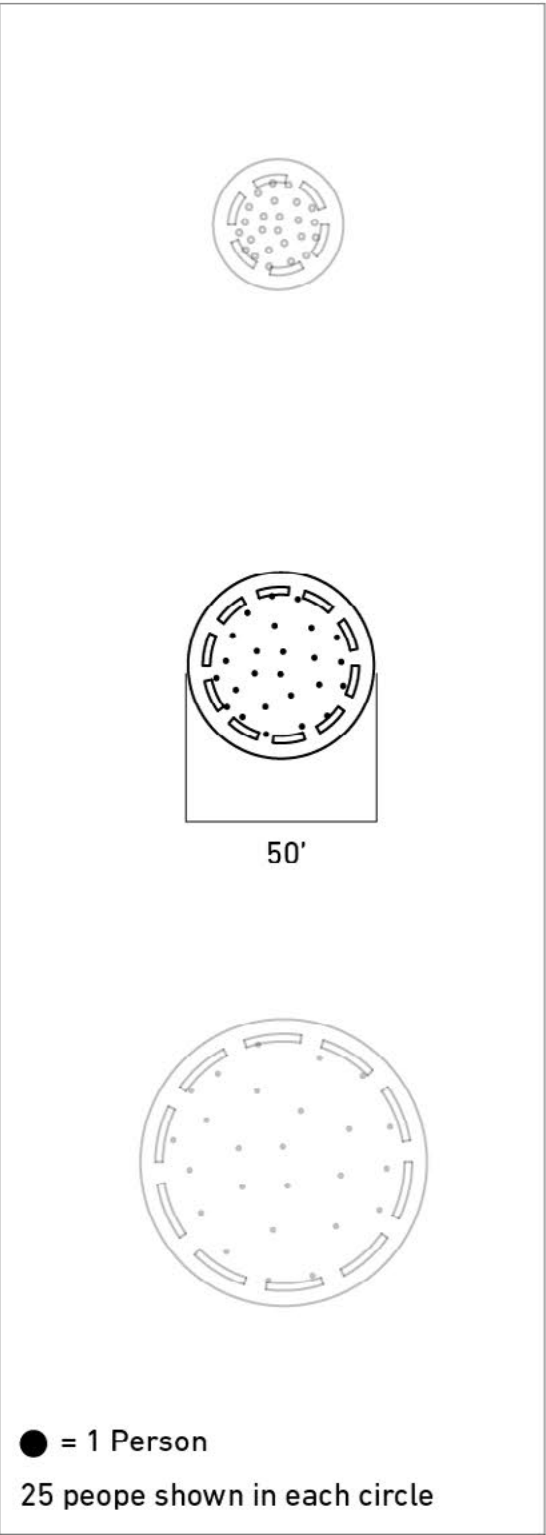
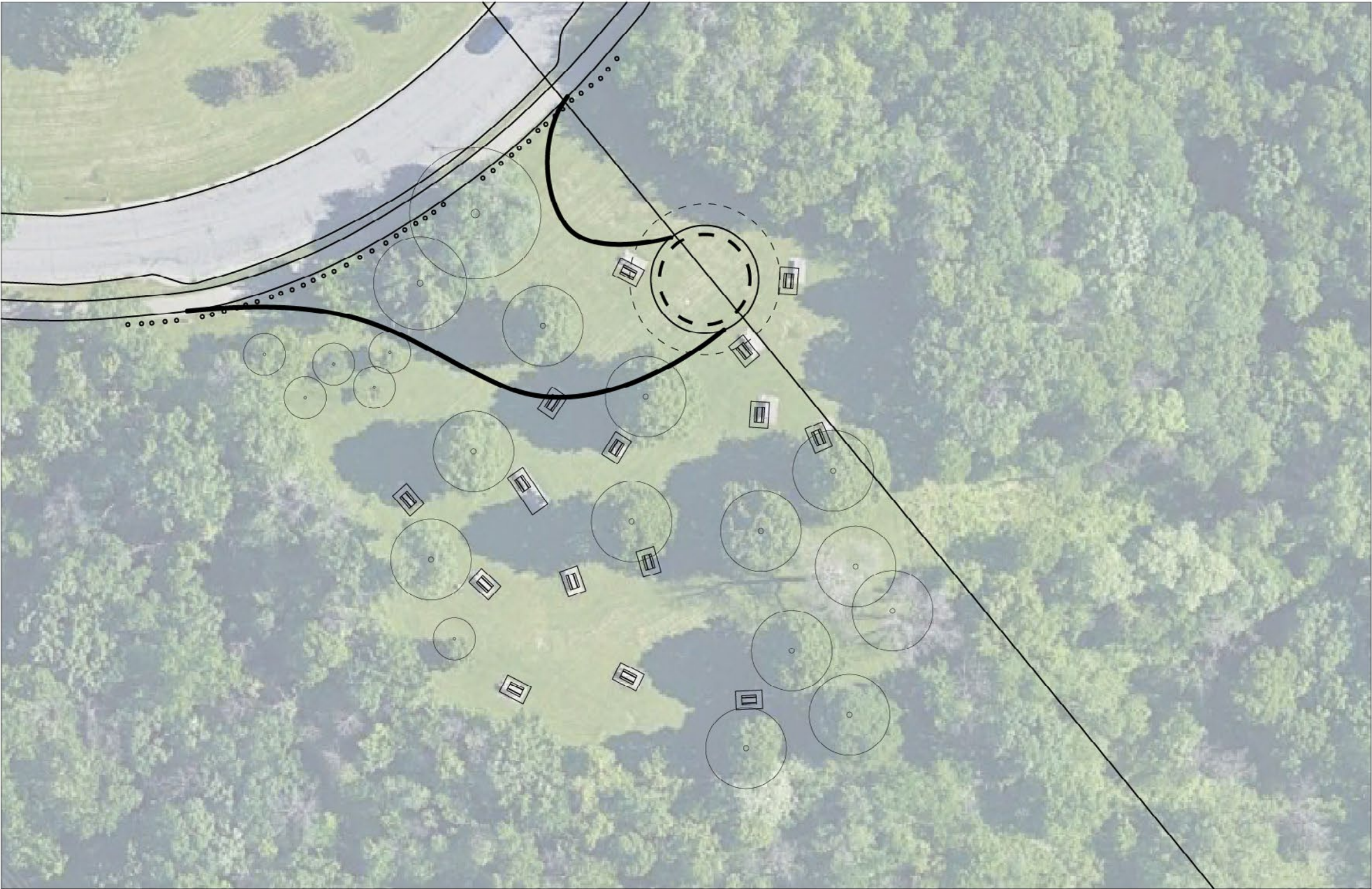
Fort Snelling Wokiksuye Gathering Circle



Proposed location of Gathering Circle in CLS

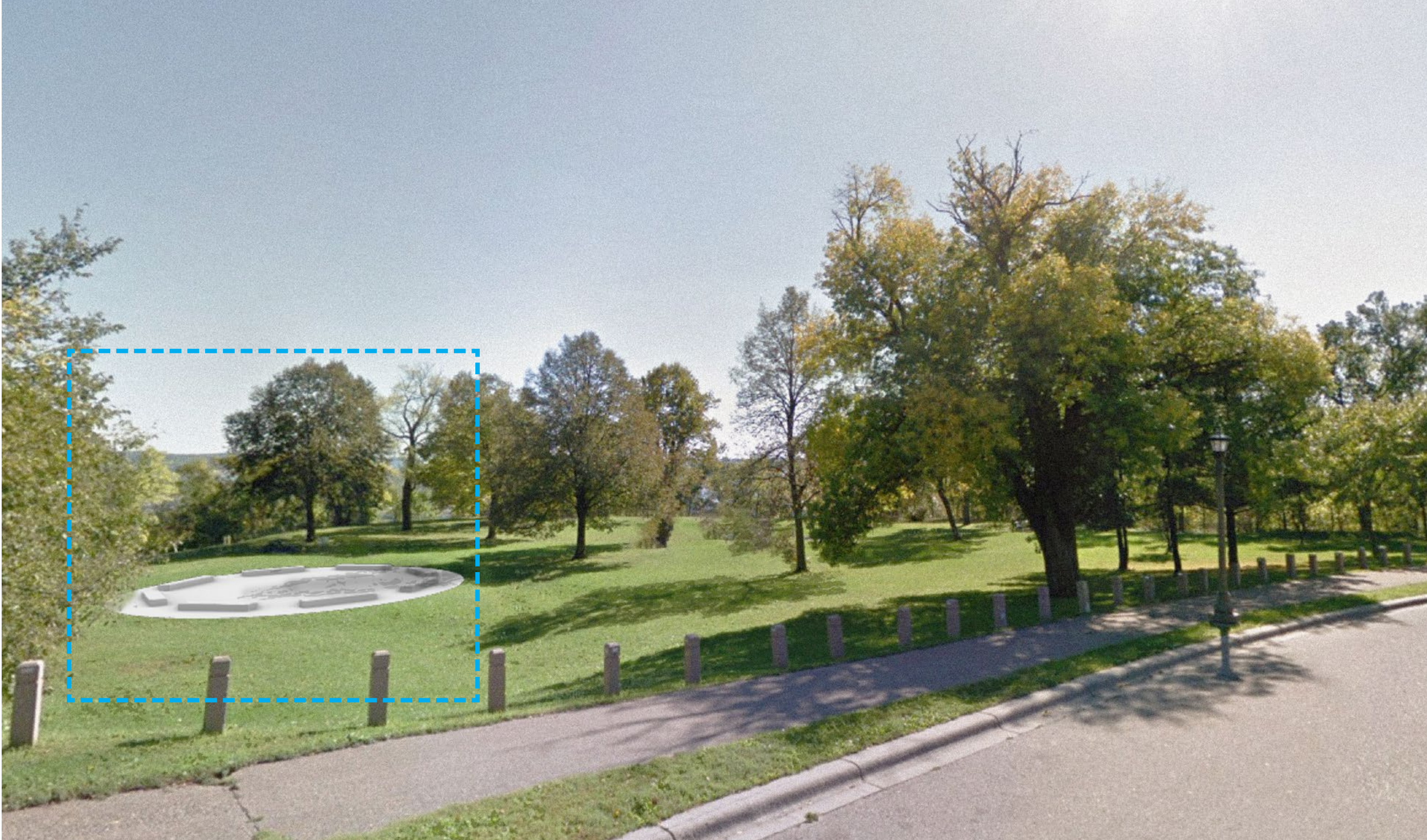
ADDITIONAL FEATURE STUDIES / GATHERING CIRCLE

Study 01 / Small Circle



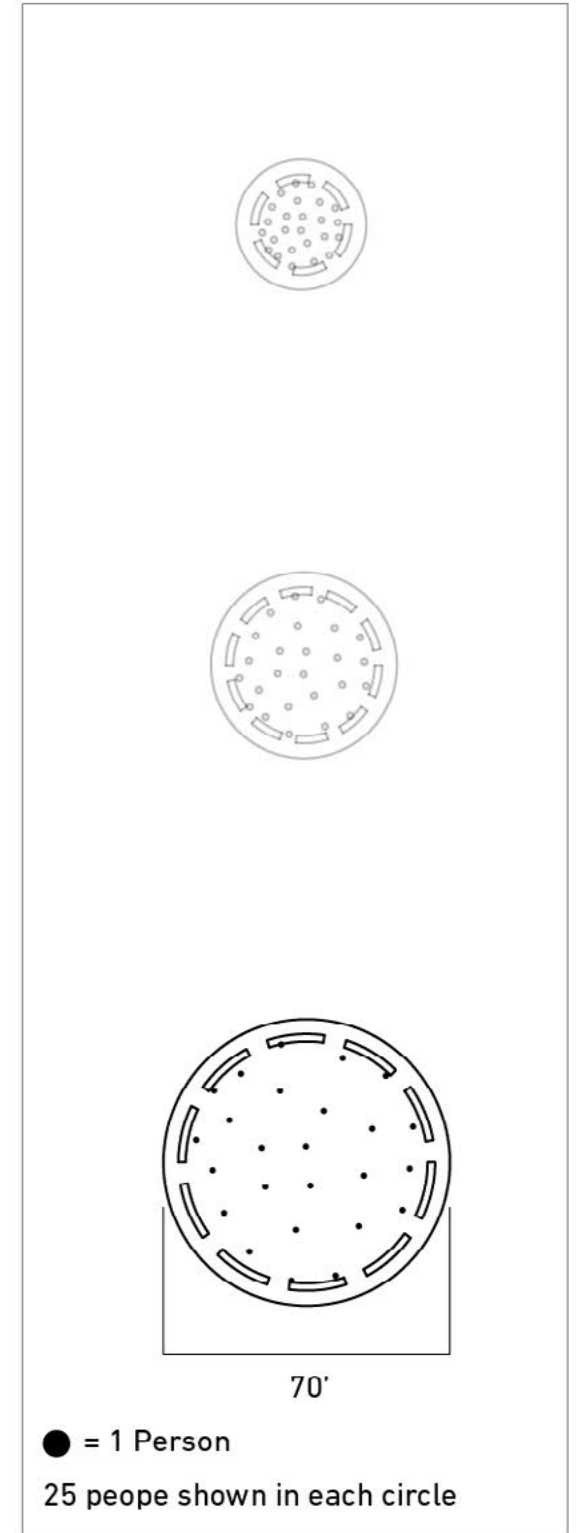
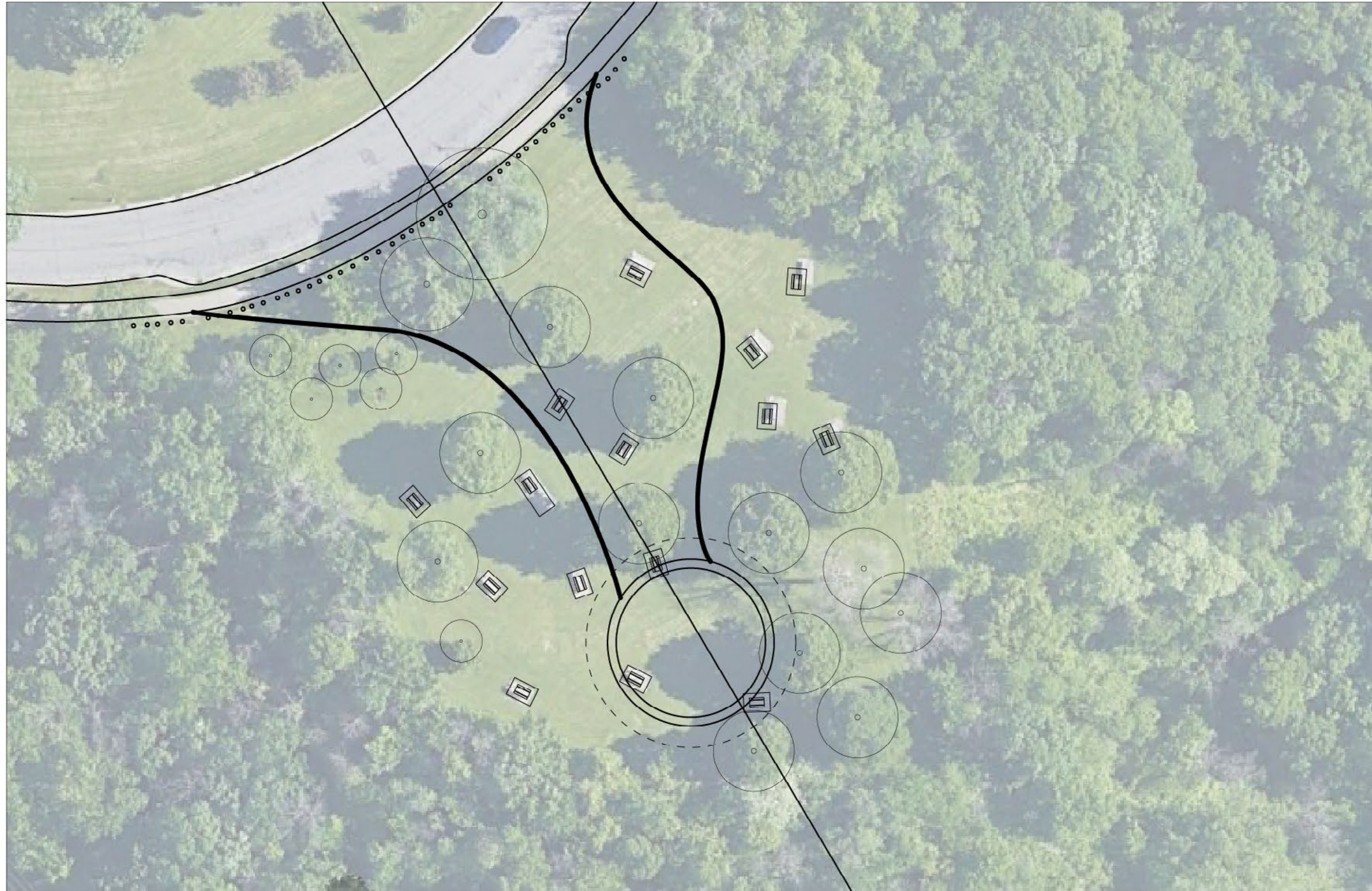
ADDITIONAL FEATURE STUDIES / GATHERING CIRCLE

Study 01 / Small Circle



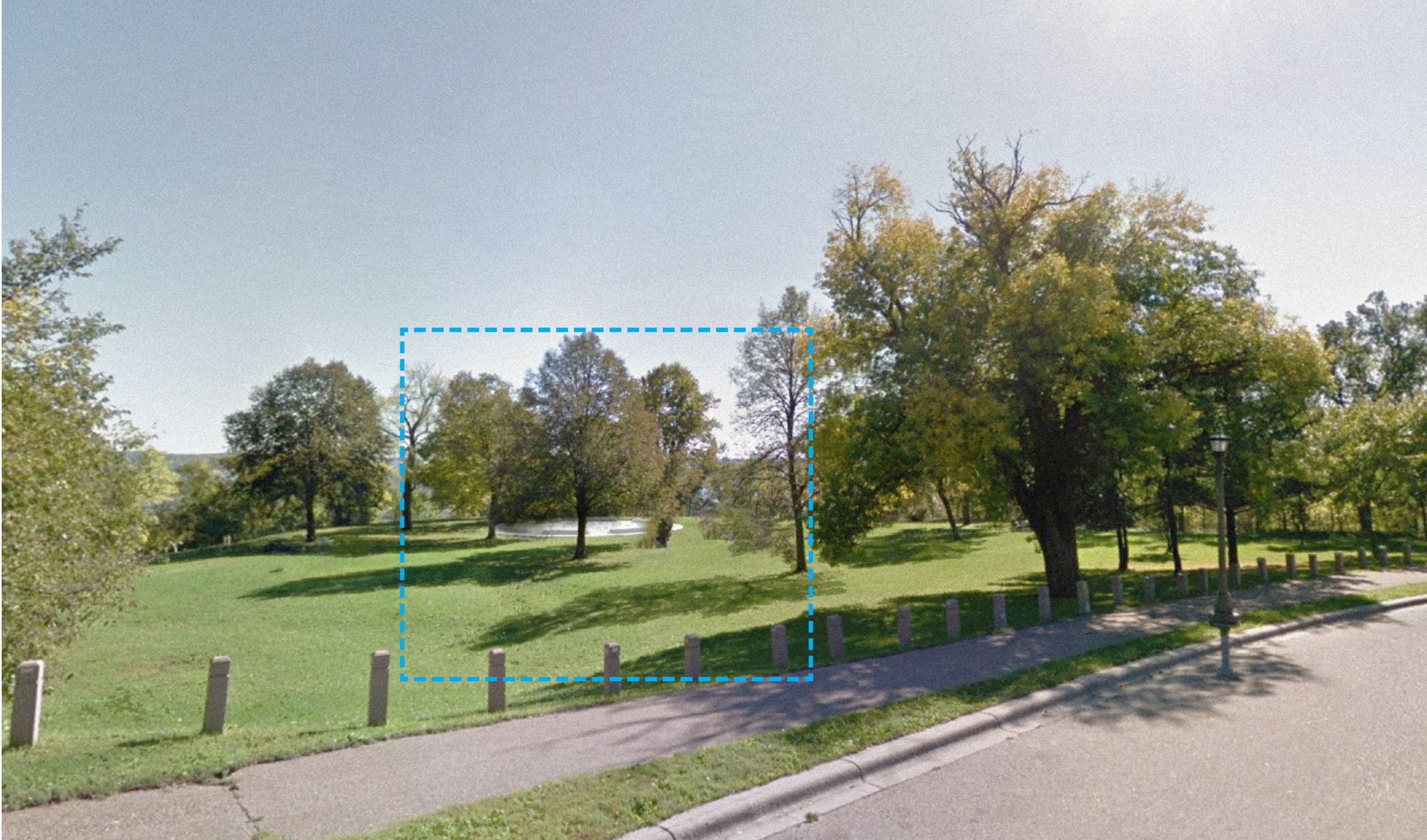
ADDITIONAL FEATURE STUDIES / GATHERING CIRCLE

Study 02 / Large Circle



ADDITIONAL FEATURE STUDIES / GATHERING CIRCLE

Study 02 / Large Circle



ADDITIONAL FEATURE STUDIES / THRESHOLD OF CUES

Proposed Features from CLS



Stepping Stones



Plant identification signage



Stone benches split by trees



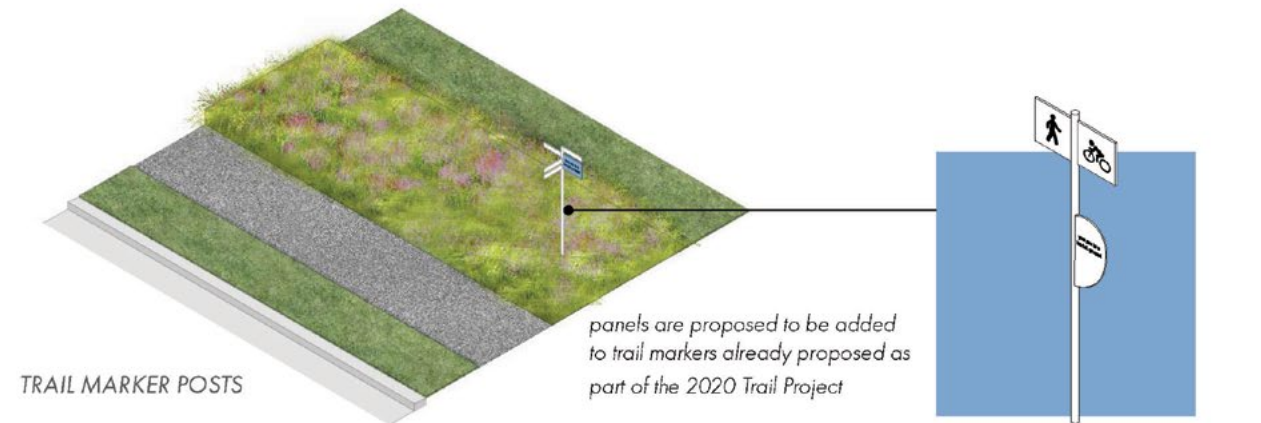
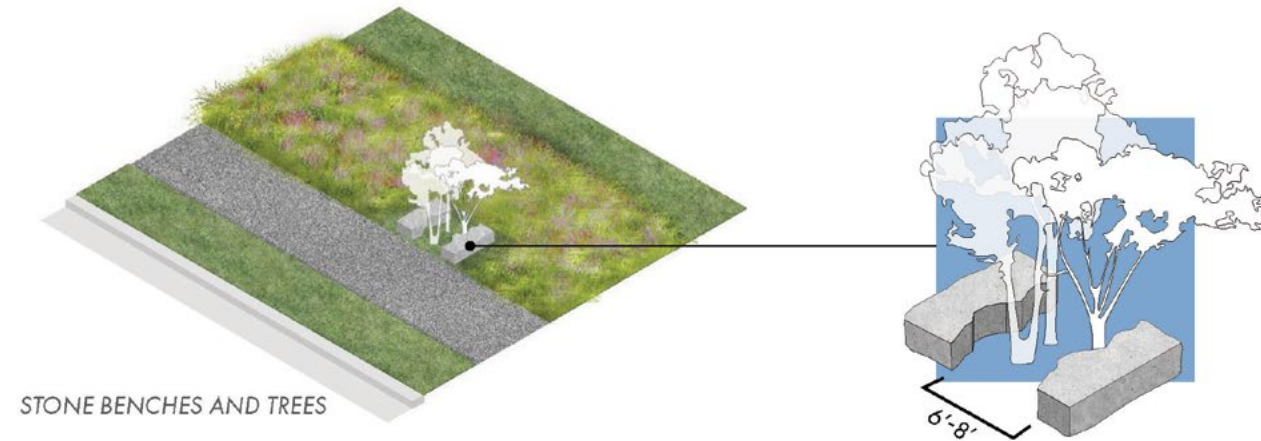
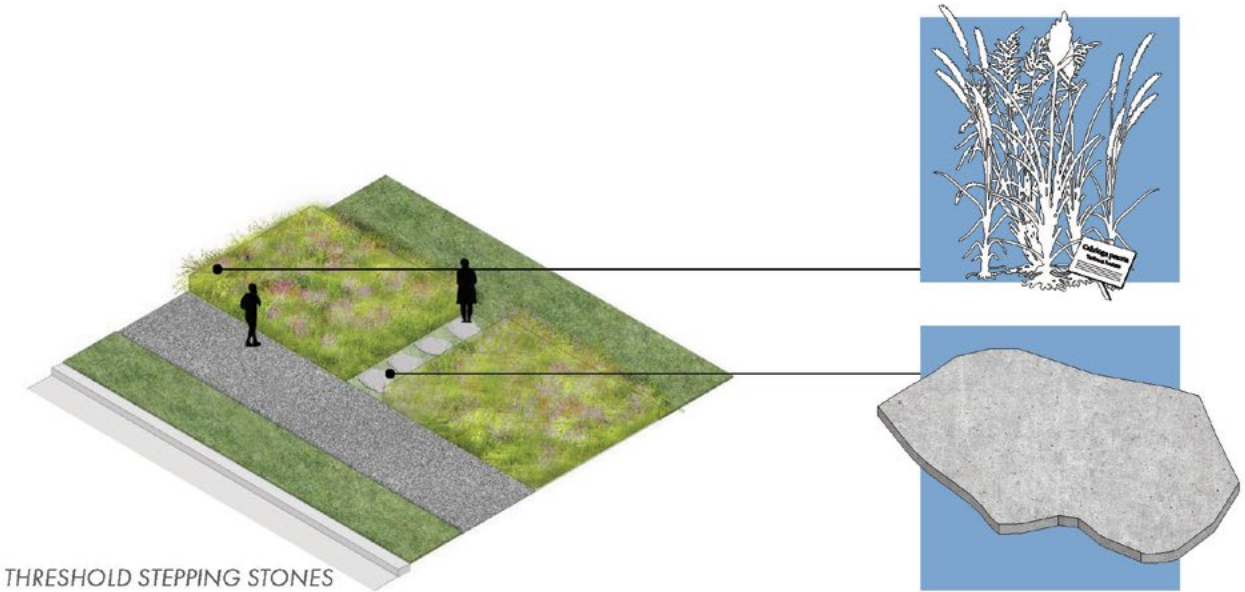
Messaging attached to stone benches



Expanded messaging on trail marker posts



Signage attachment



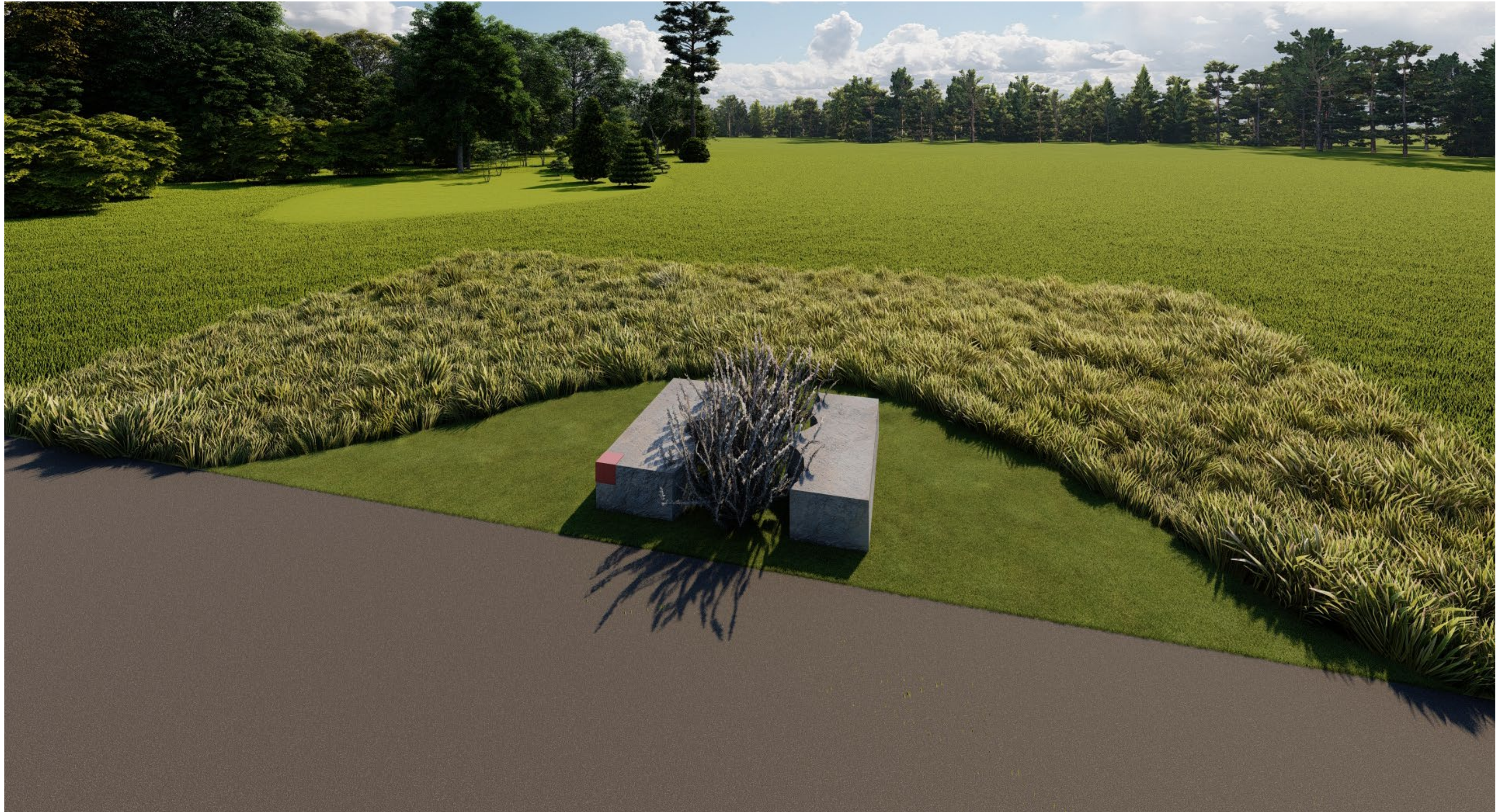
ADDITIONAL FEATURE STUDIES / THRESHOLD OF CUES

Study 01



ADDITIONAL FEATURE STUDIES / THRESHOLD OF CUES

Study 01



ADDITIONAL FEATURE STUDIES / THRESHOLD OF CUES

Study 01



ADDITIONAL FEATURE STUDIES / THRESHOLD OF CUES

Study 01



PHASE 1 MESSAGING / WEST GATEWAY



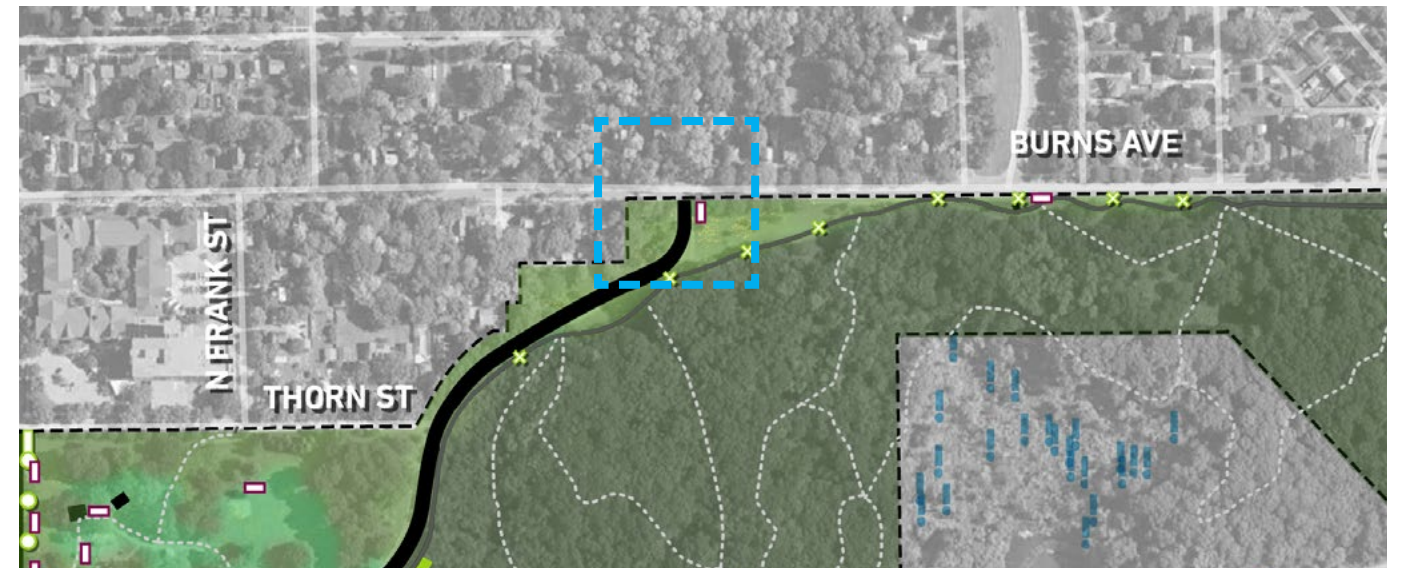
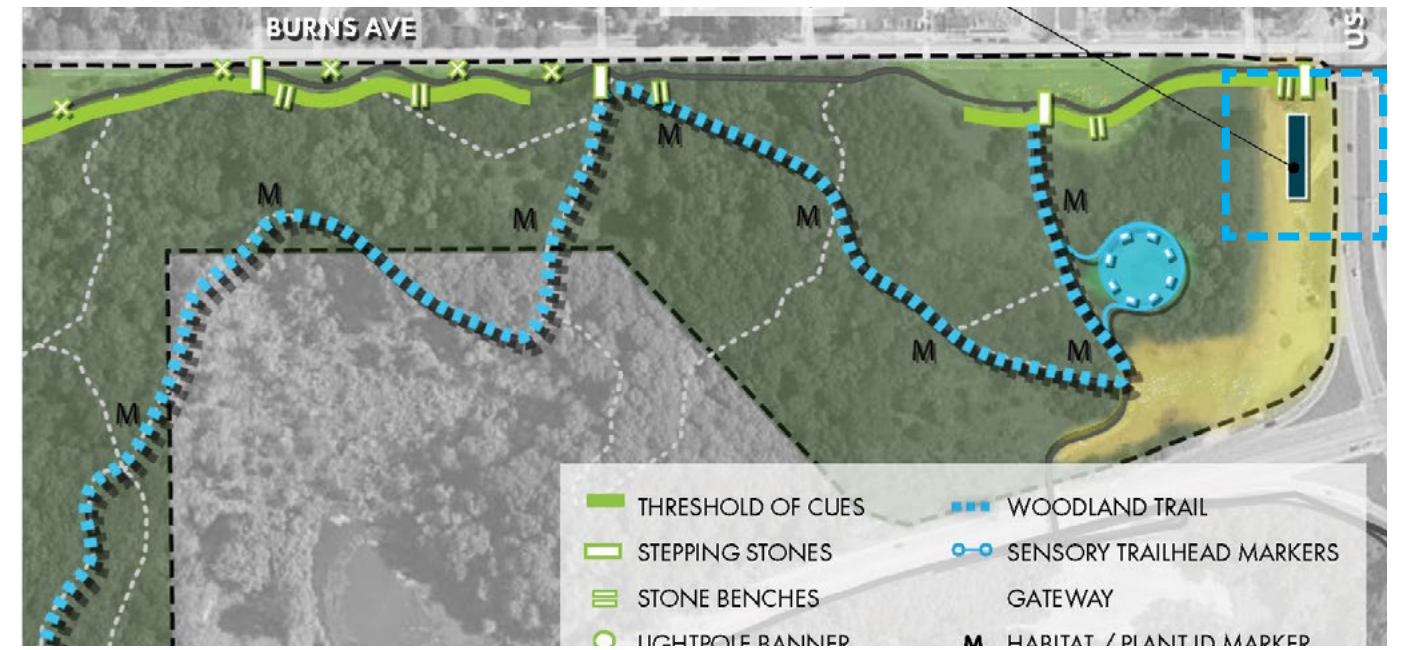
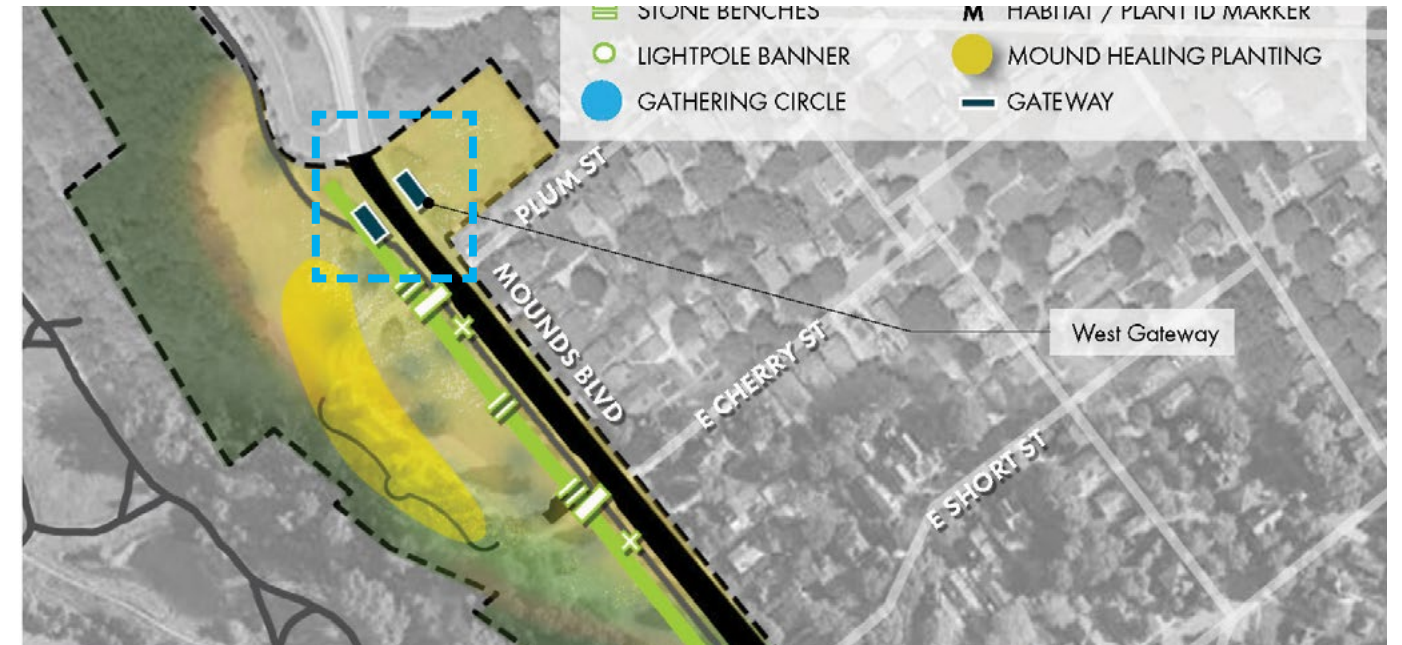
View from Mounds Blvd at Commercial Street, looking East



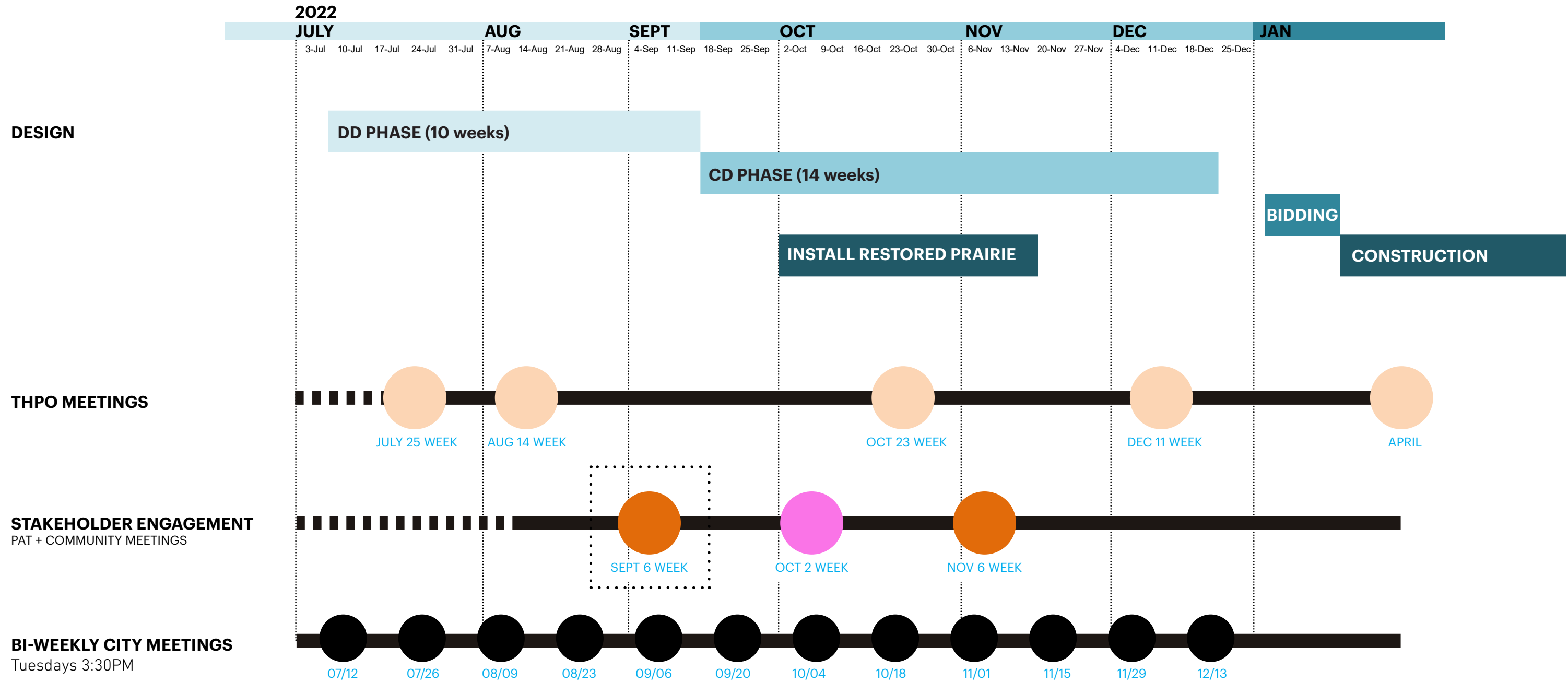
"Parade" by Mike Rathbun

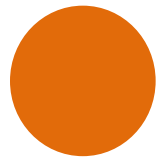


"Question Everything" by Virgil Abloh



PHASE 1 MESSAGING SCHEDULE





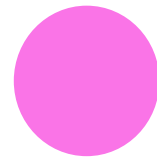
PAT MEETING 1 / Sept 6 week
DD PHASE

**KICK-OFF EVENT / INFORMATIONAL
IN-PERSON OR VIRTUAL?**

MEMBERS:
TBD

GOALS

- + Introduce team
- + Update on Immediate Acknowledgment messaging
- + Summarize Cultural Landscape Study proposal for Phase 1
- + Gather feedback on project scope



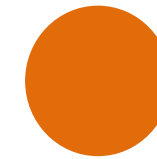
COMMUNITY MEETING / Oct 2 week
CD PHASE

**TOWNHALL / ON SITE?
PARTICIPATORY EVENT (SPRAY PAINTED
STENCILS OR ALIGN W/ BEGINNING
OF PLANTING RESTORATION?)**

PATRICIPANTS:
1. PAT Members
2. Mounds Neighborhood Community
3. Local/Regional Dakota Community

GOALS

- + Introduce team + project
- + Give community a sense of the project scope and intention of Phase 1
- + Give opportunity to respond to design proposals
- + Engage on site



PAT MEETING 2 / Nov 6 week
CD PHASE

**ON-SITE POP-UP MEMORIAL + VR
EXPERIENCE**

MEMBERS:
TBD

GOALS

- + Provide update on design progress and design install
- + Solicit feedback to specific
- + Inform students and faculty about the memorial, process and timeline