

MEETING AGENDA



1. Introductions (10 minutes)

- Introduce design team + project history

2. Phase I Design Updates (30 minutes)

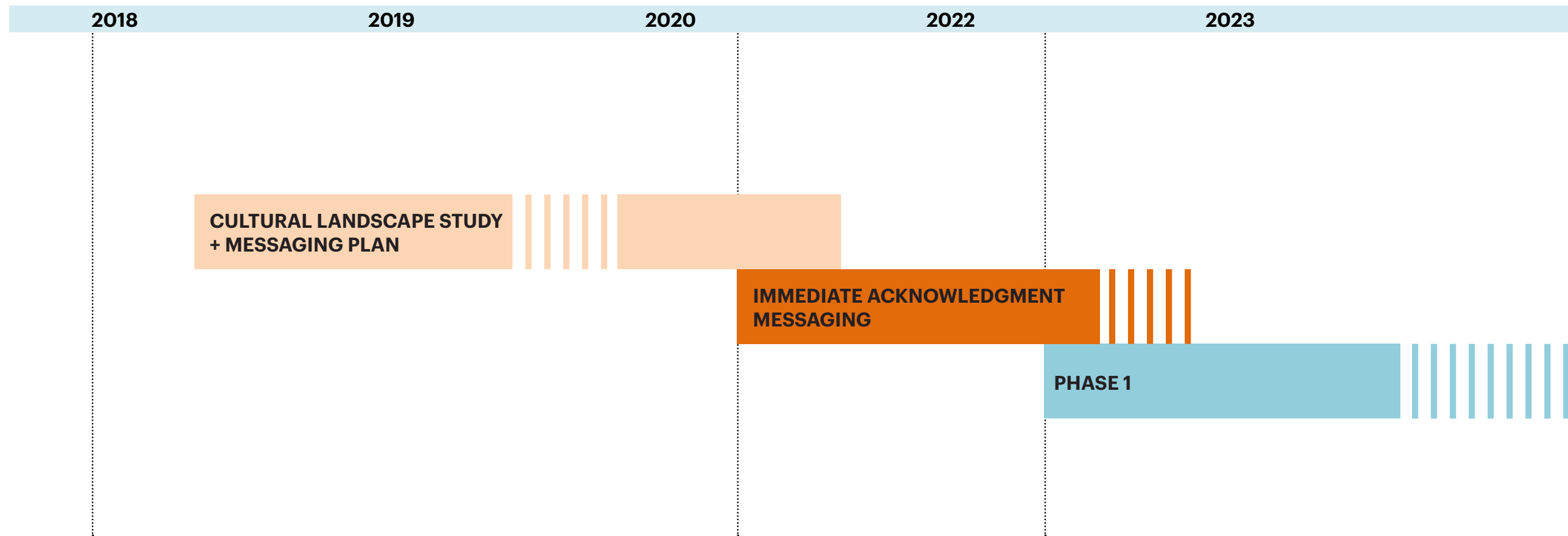
- Review overall site approach
- Review proposed approach to prairie
- Review design studies for gathering circle and messaging

3. Community Discussion (40 minutes)

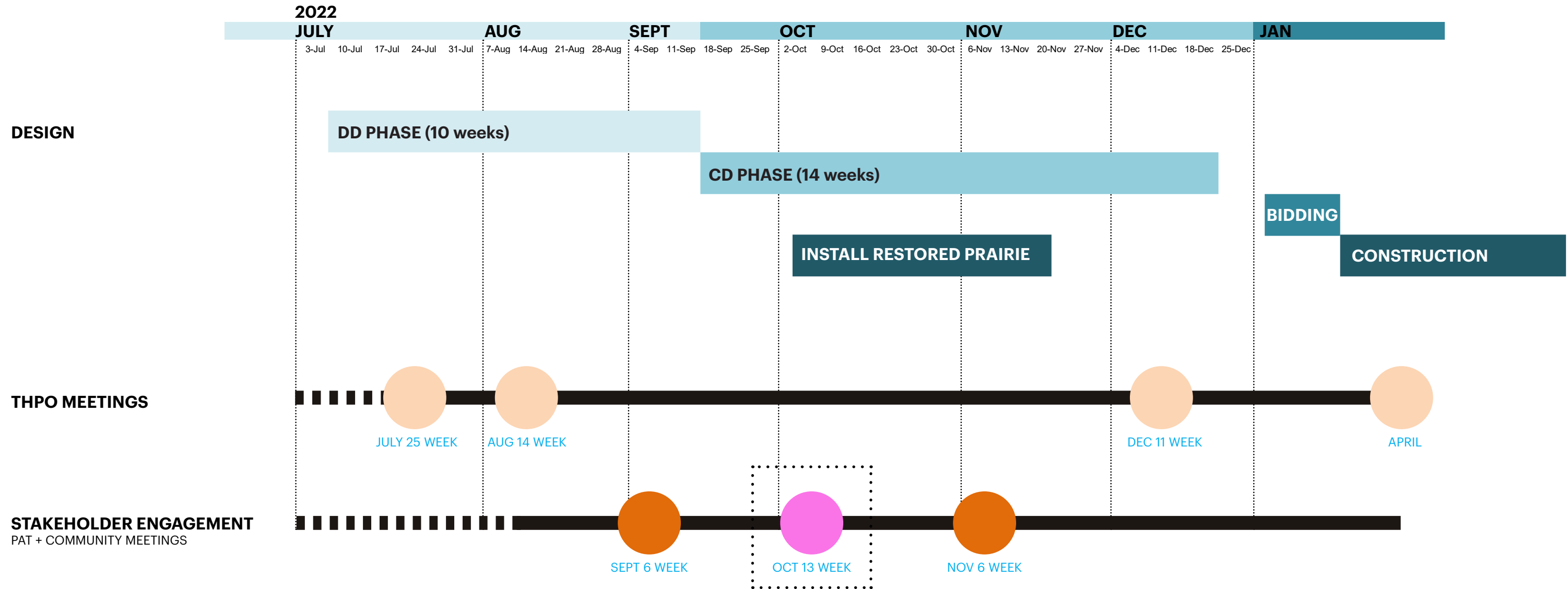
- Key Questions + Comments

4. Conclusions + Next Steps (10 minutes)

PROJECT TIMELINE



PHASE 1 MESSAGING SCHEDULE



**THIS IS A
SACRED
BURIAL PLACE**

KEY MESSAGES

WHAT IS THIS PLACE ABOUT? WHAT DOES THIS PLACE MEAN?

Key Messages across the site answer the questions, “What is this place about?” and “What does this place mean?” Messaging has the capacity to hold many different stories and to answer these questions by weaving stories and ideas together along a common thread throughout the site. Messages are intended to teach, to expand a visitor’s capacity to imagine what this place was and could be, and to communicate complex — and at times challenging or painful stories — to increase empathy and understanding. Key messages also help to convey what activities are appropriate in a sacred place that has been historically misused.

“THIS IS A BURIAL PLACE AND OUR ANCESTORS ARE STILL HERE”
IS THE OVERARCHING MESSAGE FOR THE INDIAN MOUNDS LANDSCAPE.

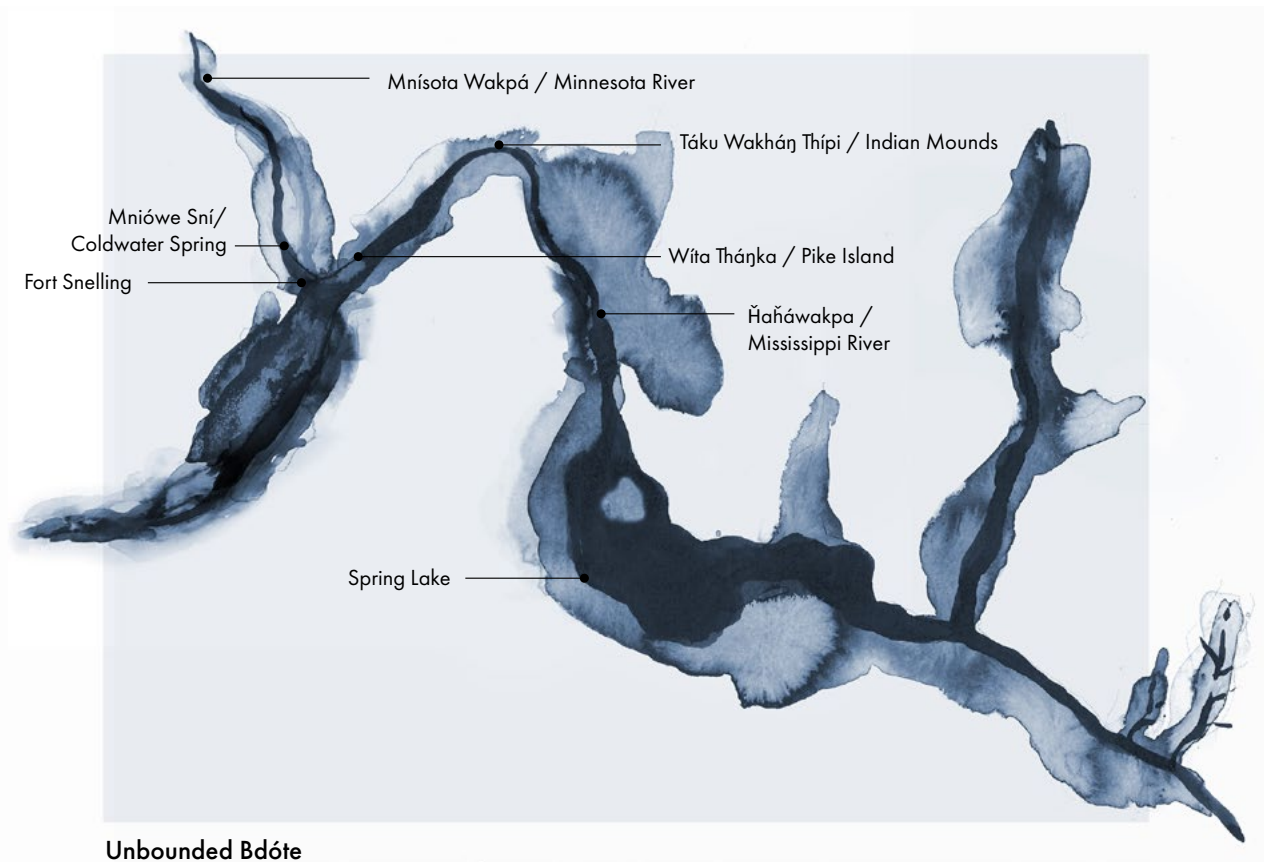
This place is not a park. It is a sacred burial place that has existed here for thousands of years. Communicating the sacredness and boundlessness of this place will be done through a variety of messages and features that aim to build respect and restore dignity. Returning community relationship to this place to that of a place of burial and not a park will require education, time, and willingness. Messaging will help to educate and encourage visitors to respect this place. Through time this messaging will shift as the perception of this place slowly evolves.

The six key messages help connect people to the site through stories, sensory experiences and new perspectives. The messages embrace a world view where edges, hard lines and delineations do not exist to help dissolve the idea that the place of burial ends where the neighborhood begins. They are a reminder that this is not a park, it is a sacred place. The six key messages are:

RESPECT + HONOR
MITÁKUYE OWÁSIN
DAKOTA LAND
POWER OF PLACE
GEOLOGIC TIME
ECOSYSTEMS OF IMNÍŽASKA

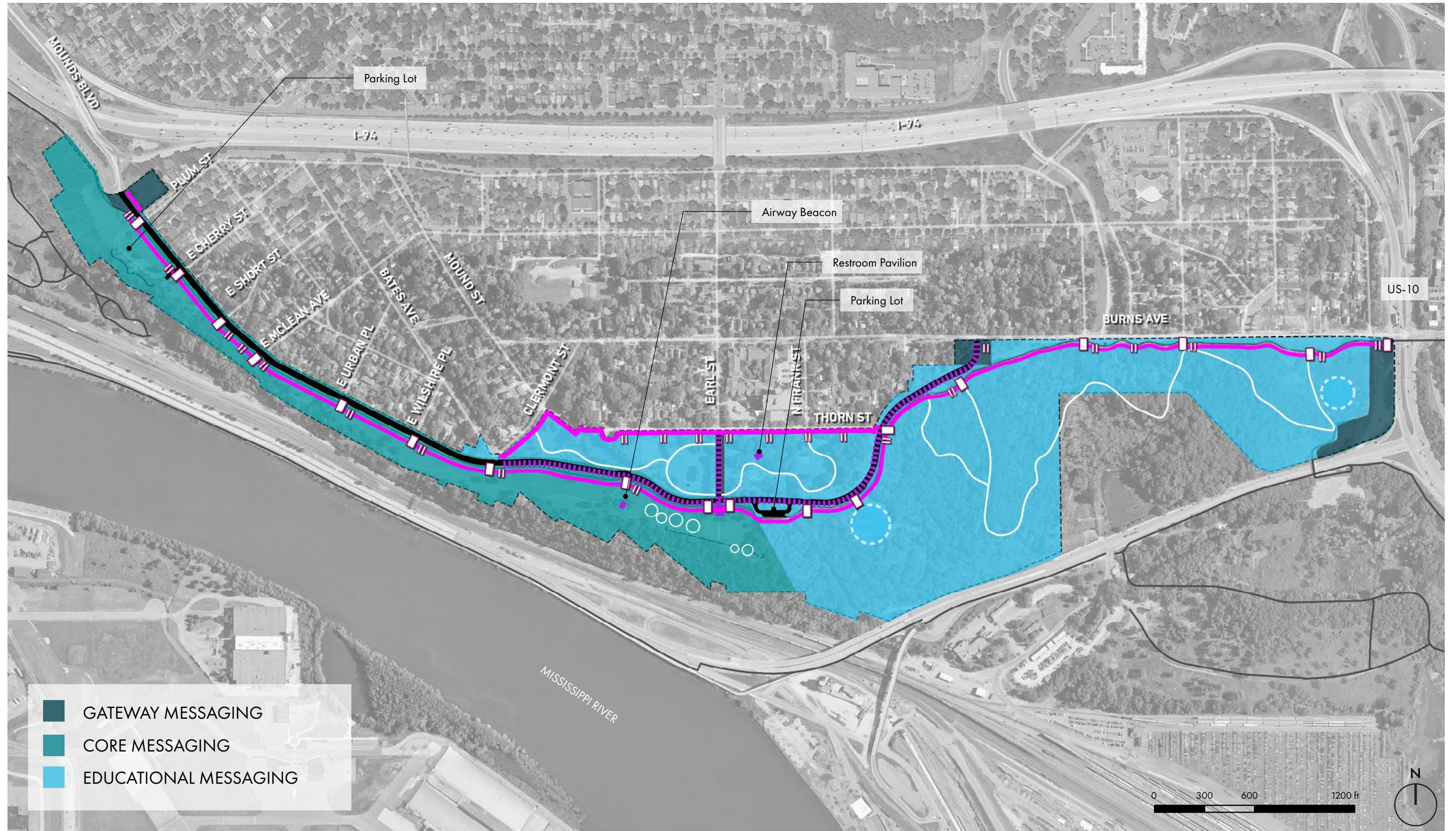
Indigenous ways of seeing differ from western culture. In the time before western colonization, rigid boundaries did not exist. Without dams, rivers flooded their banks into wetlands, without fences, animals and people moved freely across large swaths of land. With differing worldviews between cultures and ethnicities, perhaps the most difficult message to convey is that the burial ground does not end at the property edge. Like water that is not neatly contained by the banks drawn on a map, this sacred land continues beyond the boundaries of the property, spanning the bluffs along the rivers of this region.

In western culture, edges are important visual cues that communicate the end of one thing and the beginning of another. The importance and power of rigid boundaries are also closely tied to indications of ownership, another concept that does not translate to an Indigenous worldview. Western cemeteries use fences, boundaries, walls, and edges to signify the sacred. Cross-cultural expressions of a place of burial landscape become essential tools to communicate significance and sacredness to people unfamiliar with an Indigenous worldview.

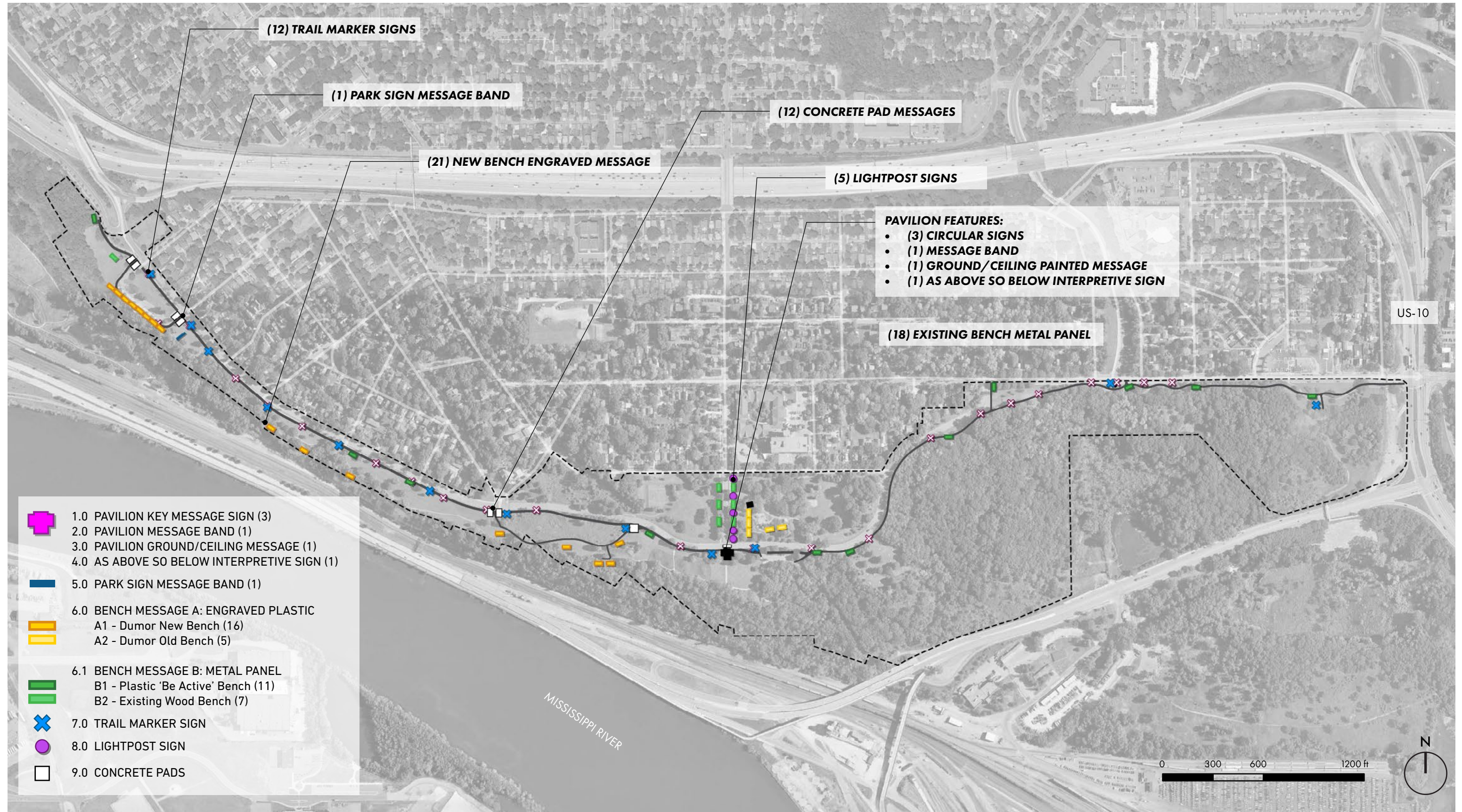


Unbounded Bdóte

CULTURAL LANDSCAPE STUDY / AREA MESSAGING



IMMEDIATE ACKNOWLEDGMENT MESSAGING PLAN



IMMEDIATE ACKNOWLEDGMENT FEATURES



IMMEDIATE ACKNOWLEDGMENT FEATURES



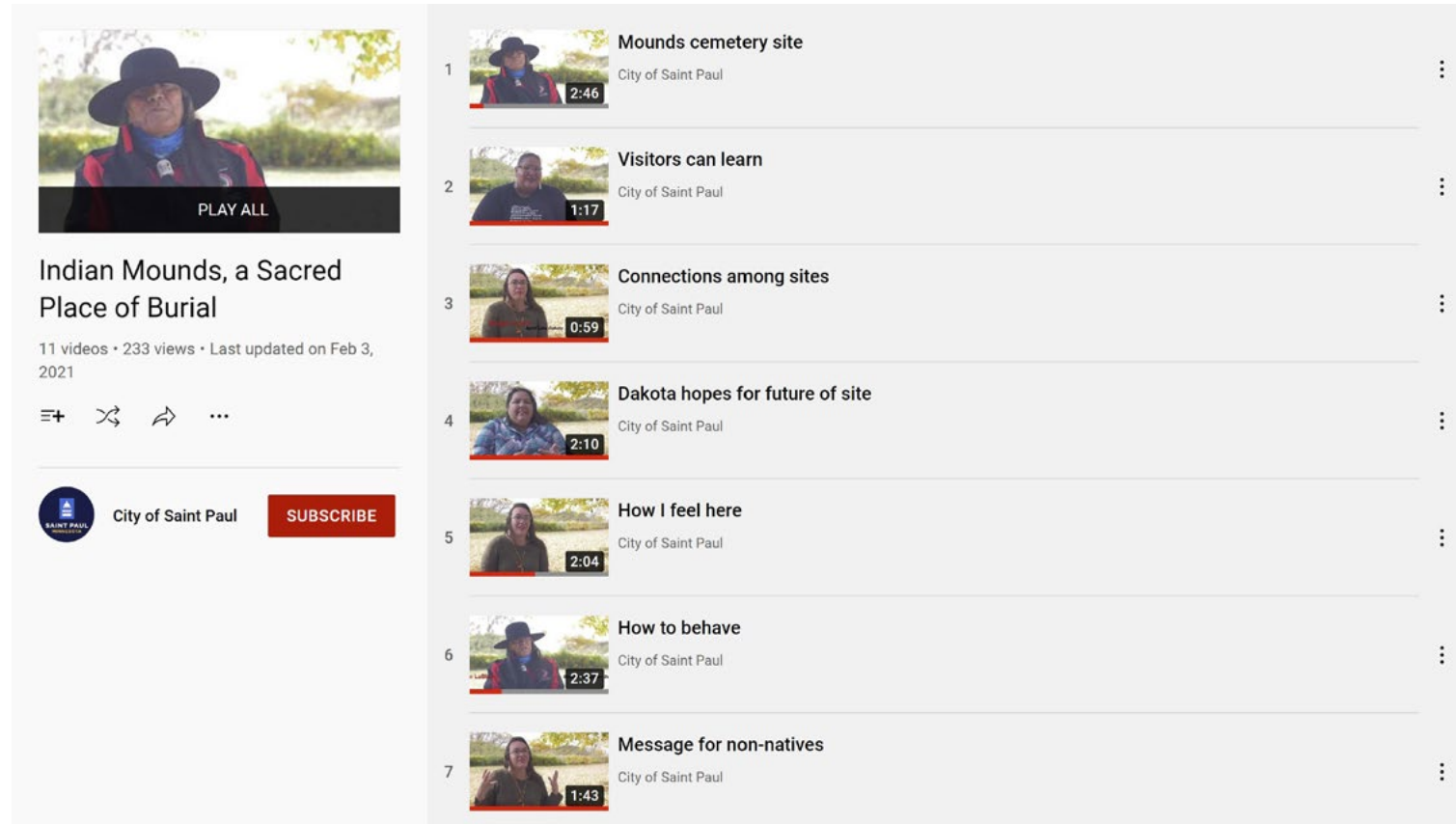


You are in
a cemetery.

THIS IS A CEMETERY
INDIAN MOUNDS PARK
CITY OF SAINT PAUL
DIVISION OF PARKS AND RECREATION



IMMEDIATE ACKNOWLEDGMENT FEATURES



Digital Media - Stories and messages to be added to signage



Sandblasting - Dakota artist designed templates

MEETING AGENDA

1. Introductions (10 minutes)

- Introduce design team + project history



2. Phase I Design Updates (30 minutes)

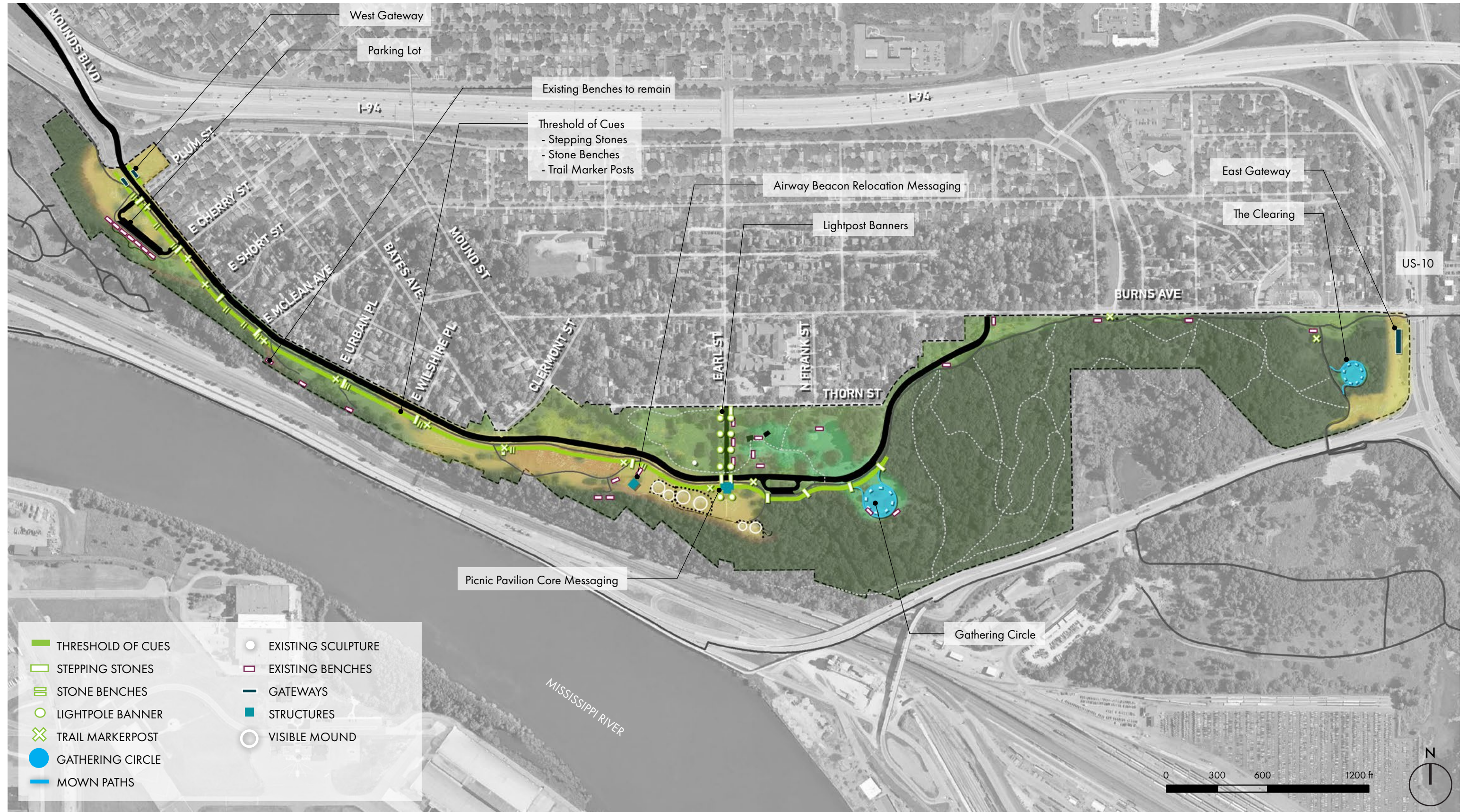
- Review overall site approach
- Review proposed approach to prairie
- Review design studies for gathering circle and messaging

3. Community Discussion (40 minutes)

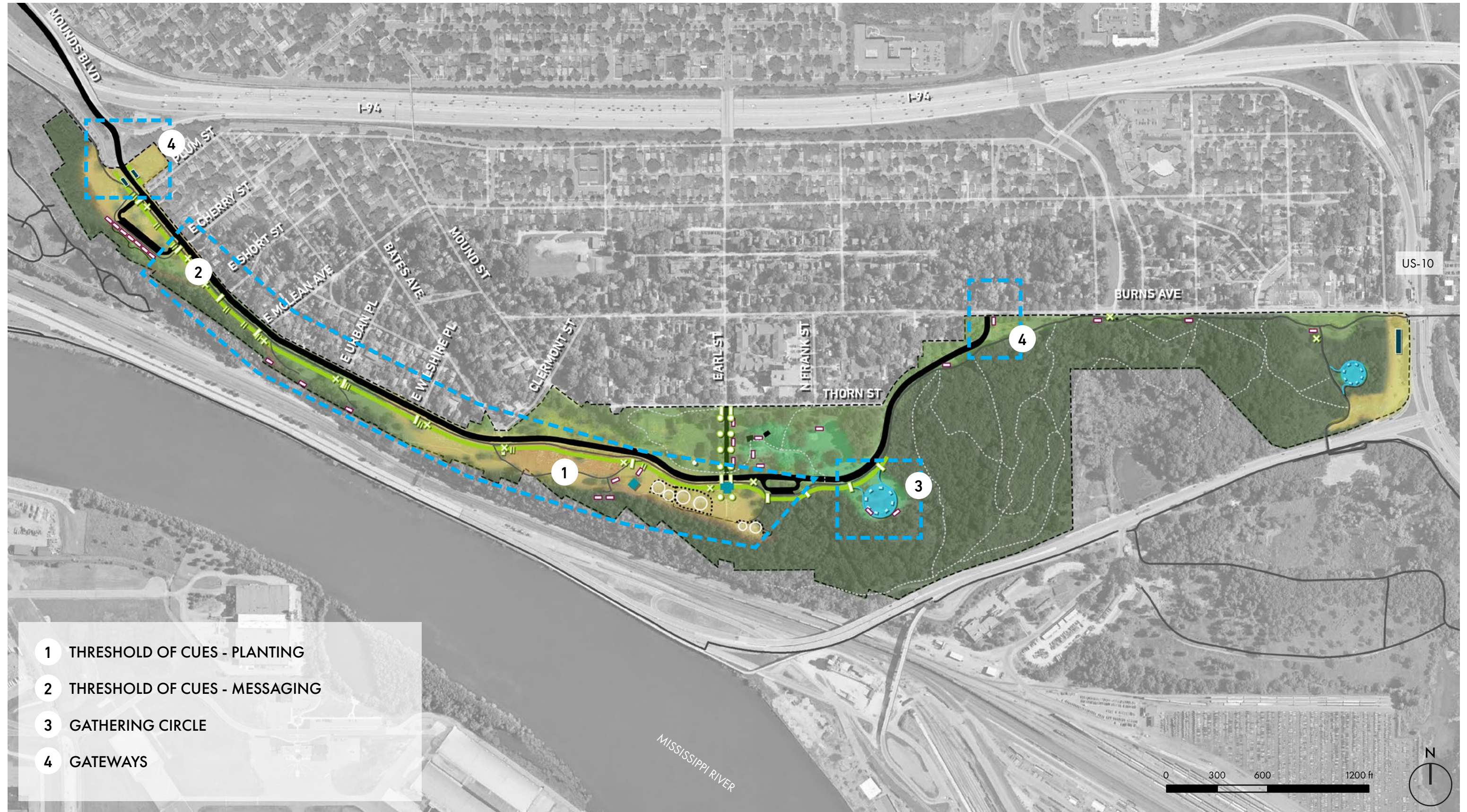
- Key Questions + Comments

4. Conclusions + Next Steps (10 minutes)

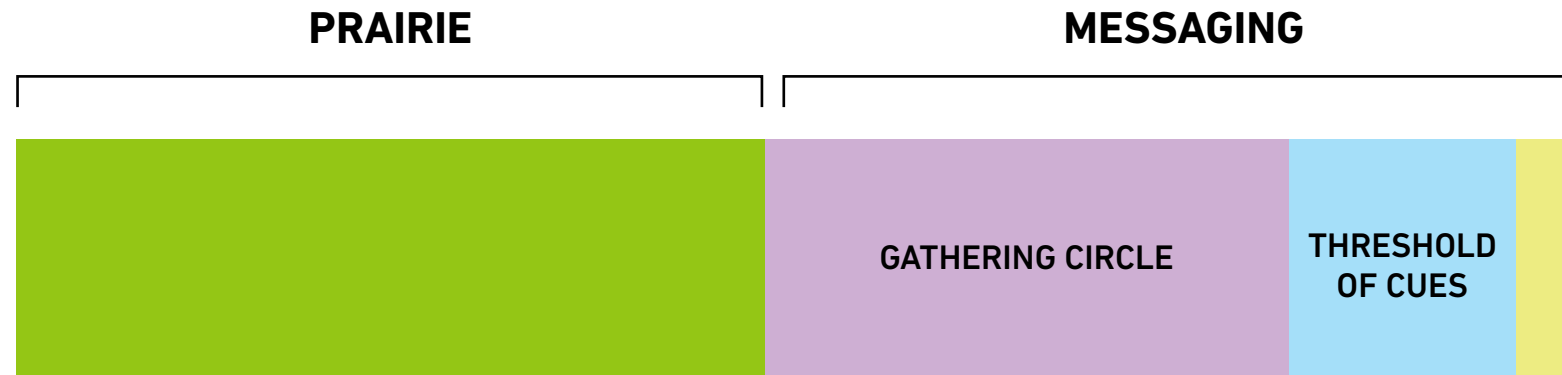
PHASE 1 MESSAGING / CLS PROPOSED FEATURES



PHASE 1 MESSAGING / PROPOSED FEATURES



PHASE 1 MESSAGING / PROPOSED FEATURES



50 / 50 APPROACH
approach preferred by THPOs



1. PRAIRIE



2. GATHERING CIRCLE

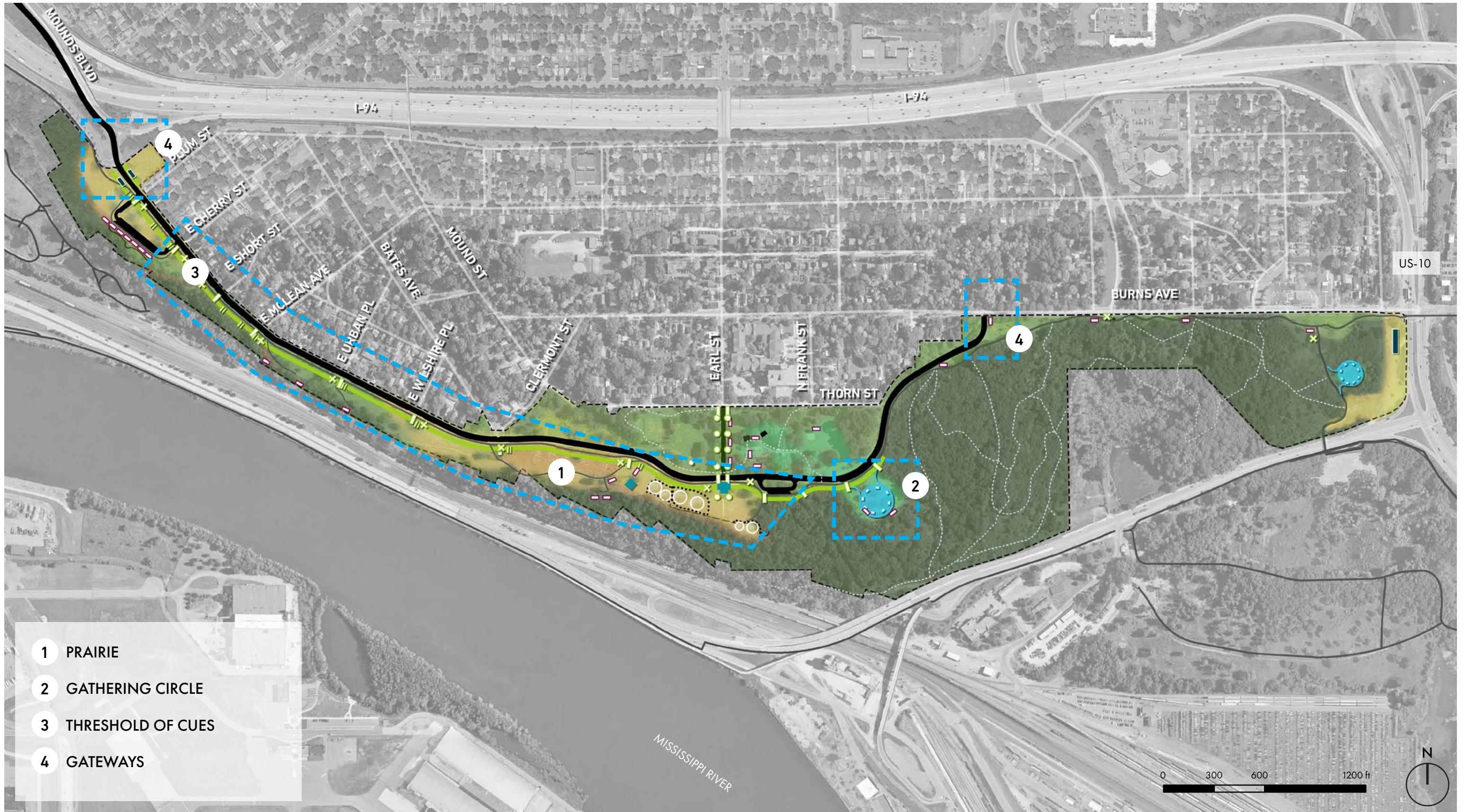


3. THRESHOLD OF CUES



4. GATEWAYS

PHASE 1 MESSAGING / PLAN



PHASE 1 MESSAGING / PRAIRIE



1. PRAIRIE



2. GATHERING CIRCLE

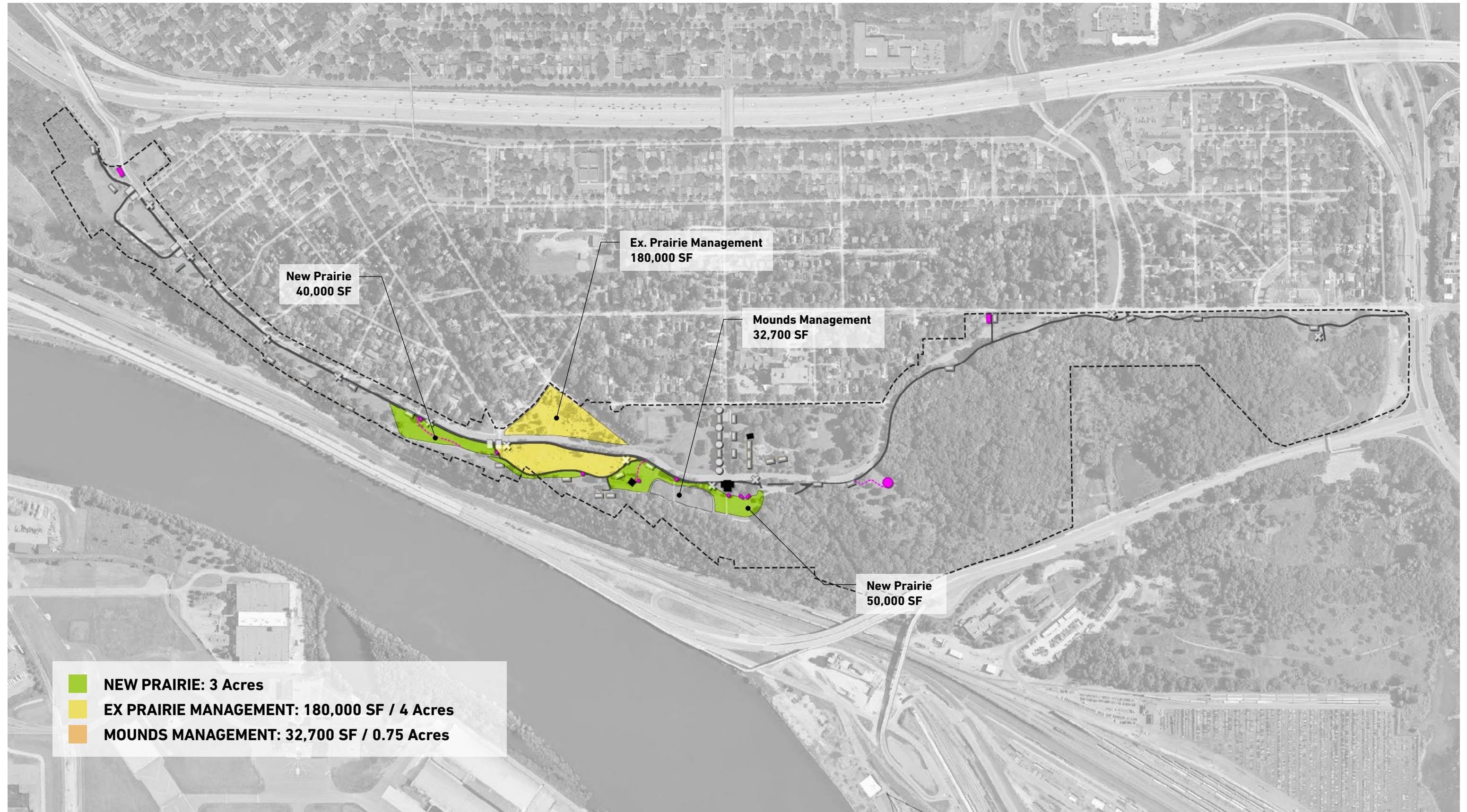


3. THRESHOLD OF CUES



4. GATEWAYS

PHASE 1 MESSAGING / PRAIRIE



WHY PRAIRIE RESTORATION MATTERS

1. THIS IS A SACRED BURIAL PLACE

Prairie re-establishment acknowledges the sacredness of this site, honoring what was here historically and acknowledging the destruction that has occurred over time

2. CHANGING PERCEPTION

One of the key goals of messaging for the CLS was to help change perception of this site from a park to a cemetery, with prairie reestablish as central to that messaging

3. DAKOTA GUIDANCE

The recommendation and preference from the THPO's has been to prioritize the introduction of prairie

ADDRESSING KEY CONCERNS

1. MAINTENANCE

The project proposes a plan for long term maintenance including clear guidance and reserved funding for 3 year warranty and maintenance of existing prairie

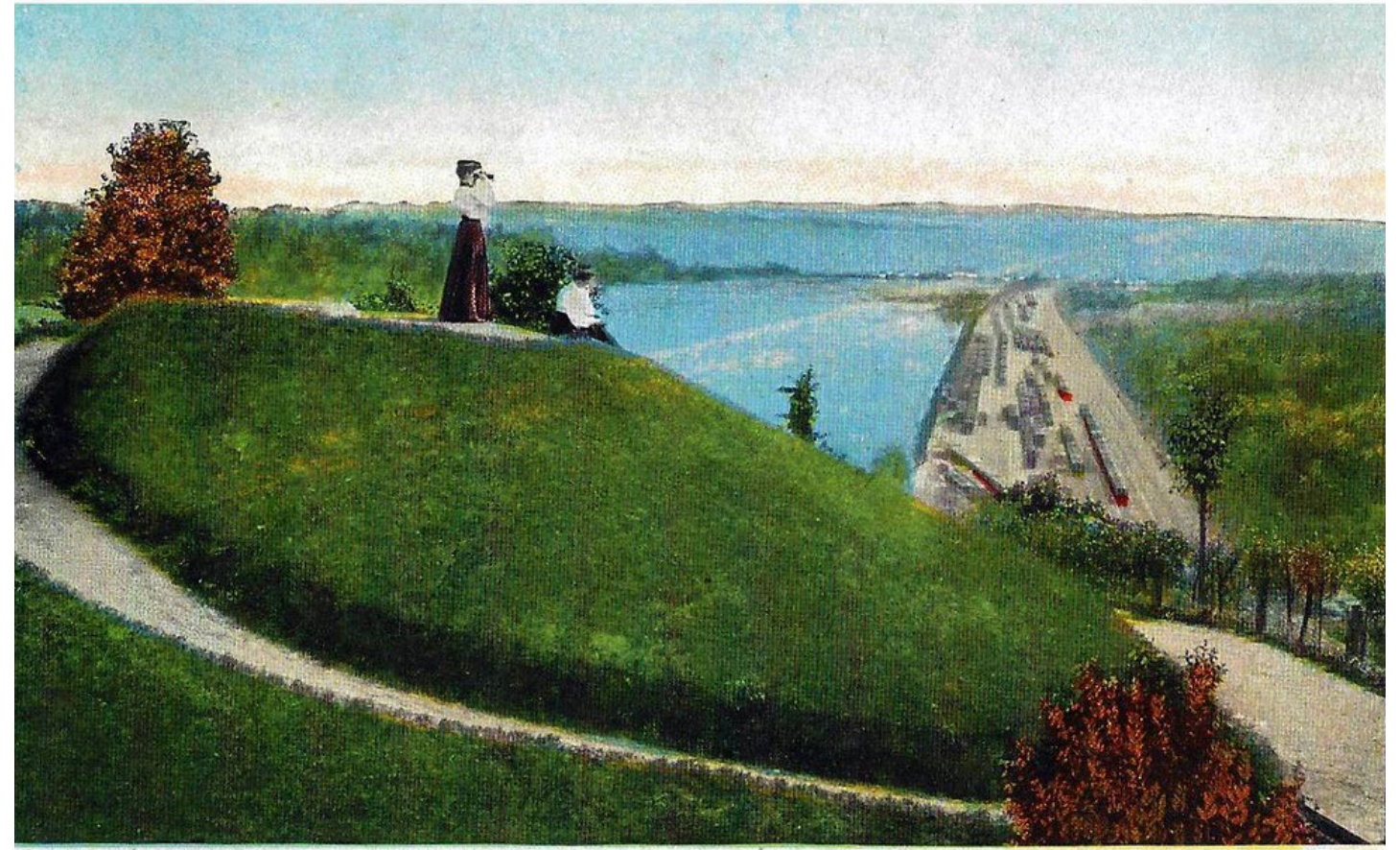
2. REPLACING PASSIVE LAWN SPACE

Proposed prairie removes underutilized lawn, but creates new concentrated and beautiful public gathering spaces

PHASE 1 MESSAGING / PRAIRIE
WHY PRAIRIE RESTORATION MATTERS



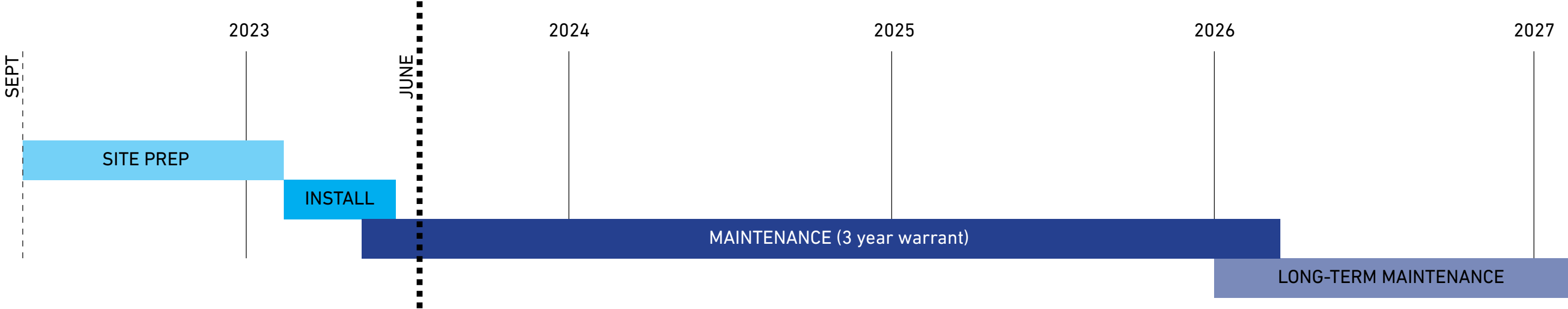
PRE-SETTLEMENT PRAIRIE



INDIAN MOUND PARK, ST. PAUL, MINN.

20TH CENTURY

PRAIRIE RESTORATION SCHEDULE



PRAIRIE RESTORATION / PRAIRIE EXAMPLES



Prairie in July



Mown Path through Prairie

PRAIRIE RESTORATION / PRAIRIE SEED MIX

PERENNIALS

- Yarrow
- Fragrant Hyssop
- Leadplant
- Prairie Sage
- Common Milkweed
- Butterflyweed
- Canada Milkvetch
- White Wild Indigo
- Partridge Pea
- White Prairie Clover
- Purple Prairie Clover
- Prairie Cinquefoil
- Narrow-leaved Purple Coneflower
- Cream Gentian
- Maximilian Sunflower
- Common Oxeye
- Meadow Blazing Star
- Wild Lupine
- Round-headed Bush Clover
- Wild bergamot
- Spotted Beebalm
- Large-flowered Penstemon
- Mountain Mint
- Long-headed Coneflower
- Yellow Coneflower
- Prairie Rose
- Black-eyed Susan
- Early Figwort
- Compass Plant
- Gray Goldenrod
- Stiff Goldenrod
- Showy Goldenrod
- Smooth Aster
- Azure Aster
- New England Aster
- Western Spiderwort
- Blue Vervain
- Hoary Vervain
- Culver's Root
- Heart-leaved Alexanders

GRASSES

- Big Bluestem
- Sideoats Grama
- Blue Grama
- Plains Oval Sedge
- Canada Wild Rye
- Virginia Wild Rye
- June Grass
- Switchgrass
- Little Bluestem
- Indian Grass
- Prairie Dropseed



PHASE 1 MESSAGING / PRAIRIE



PHASE 1 MESSAGING / GATHERING CIRCLE



1. PRAIRIE



2. GATHERING CIRCLE



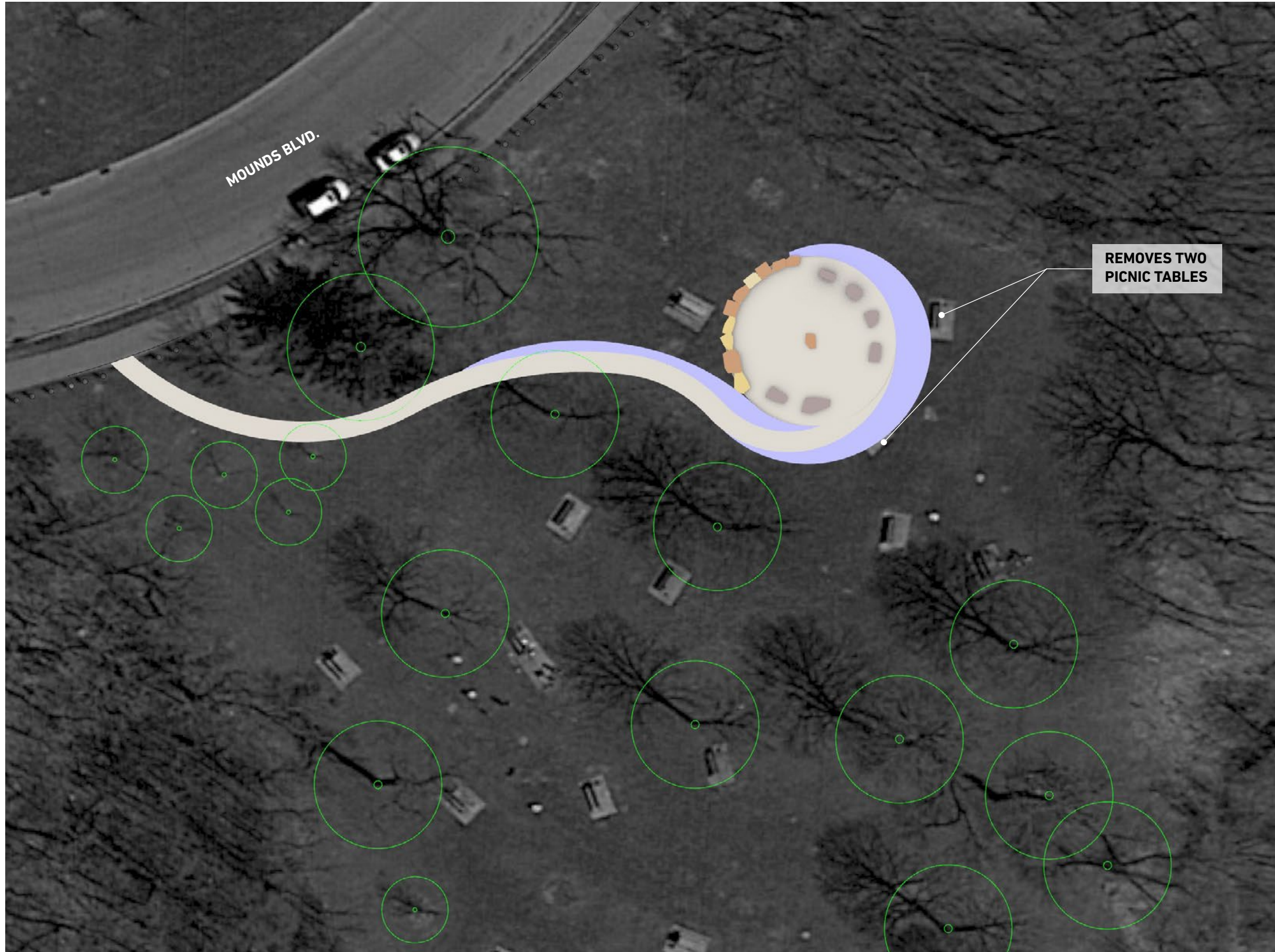
3. THRESHOLD OF CUES



4. GATEWAYS

PHASE 1 MESSAGING / GATHERING CIRCLE

PROPOSED PLAN



KEY THEMES

Power of Place
Geologic Time

PROGRAMMING

Ceremony
Teaching / Education
Gathering

Seats 30-35

PHASE 1 MESSAGING / GATHERING CIRCLE

PROPOSED FEATURES FROM CLS

MESSAGING PLAN

KEY MESSAGE THEMES

SIX PRIMARY THEMES

GEOLOGIC TIME

Evidence of the events that shaped this valley is still visible in today's landscape. The Mississippi River has spent the last 12,000 years carving cliffs into the ancient rocks. These cliffs of soft, white sandstone (called the St. Peter Sandstone) are the lithified remains of the expansive beaches of an Ordovician sea that covered the mid-west 450 million years ago. Deep time is at the surface, within view. The spiritual and cultural significance of this place is tied to the geology of the bluff — scrubbed by glaciers and worn by rivers and weather—in places, right through bedrock.

KEY SUBTHEMES + STORIES

- Imnīzaska, "White Cliffs" referring to the limestone + sandstone bluffs (erosion, scouring, carving, terracing of the bluffs and river valley over time)
- Glaciers and the River Warren
- Wakhán Thípi + the Spiritual Significance of Caves
- Influence on patterns of vegetation and landforms
- Floods creating/shaping the tectonics of the river valley
- Karst, Caves and Springs

ECOSYSTEMS OF IMNĪŽASKA

The back and forth tension between natural systems and human intervention is easily observed in today's landscape. Two centuries ago, the river valley featured many different landscapes. On the high ground above the rivers there was a mix of upland prairie and small groves of bur oaks interspersed with brush prairie. In places there were probably thickets of shrubby dogwood, sumac, and edible fruits and nuts. Fires, occurring naturally or set by the Dakota, helped maintain this mix. In the river valley were well-developed floodplain forests. Extensive areas of wet prairie and marshlands surrounded shallow lakes and ponds.

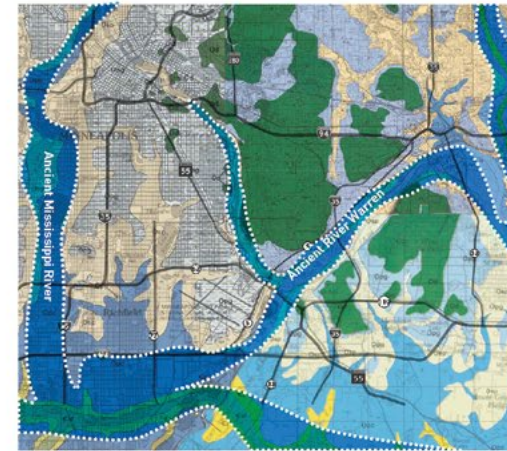
KEY SUBTHEMES + STORIES

- Culturally Significant Plants (Protection, Healing, Sustenance)
- Native Habitat (Bluff and Floodplain)
- Altered Hydrology (streams, creeks and underground lakes)
- Historic Vegetation
- Remnant and Protected Ecological Communities
- Human Effects on the River, Bluffs and Mounds
- Wood that fueled the river valley
- Pollution Sites

6.12

INDIAN MOUNDS CULTURAL LANDSCAPE STUDY AND MESSAGING PLAN

MESSAGING PLAN



Bedrock geology, ancient river



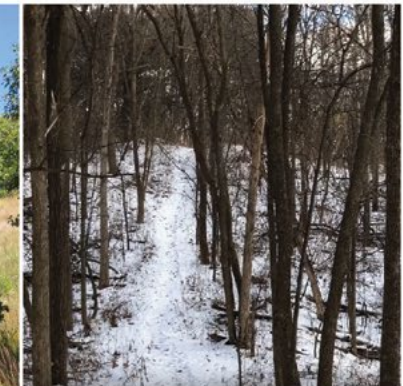
Wakhán Thípi



Tall Grass Prairie



Oak Savanna



Oak Basswood Forest

INDIAN MOUNDS CULTURAL LANDSCAPE STUDY AND MESSAGING PLAN

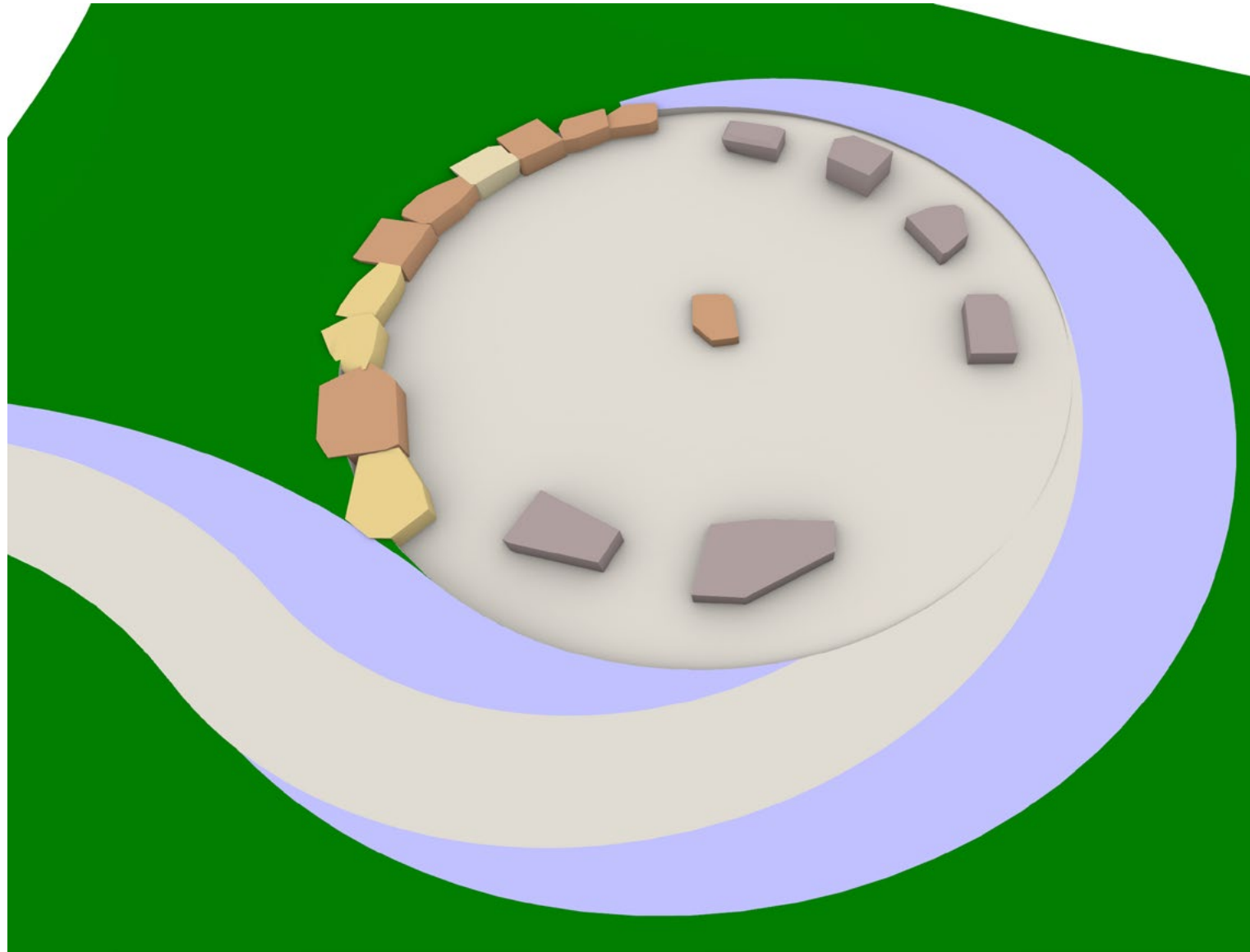
6.13

PHASE 1 MESSAGING / GATHERING CIRCLE
STONE INVENTORY FROM ST. PAUL

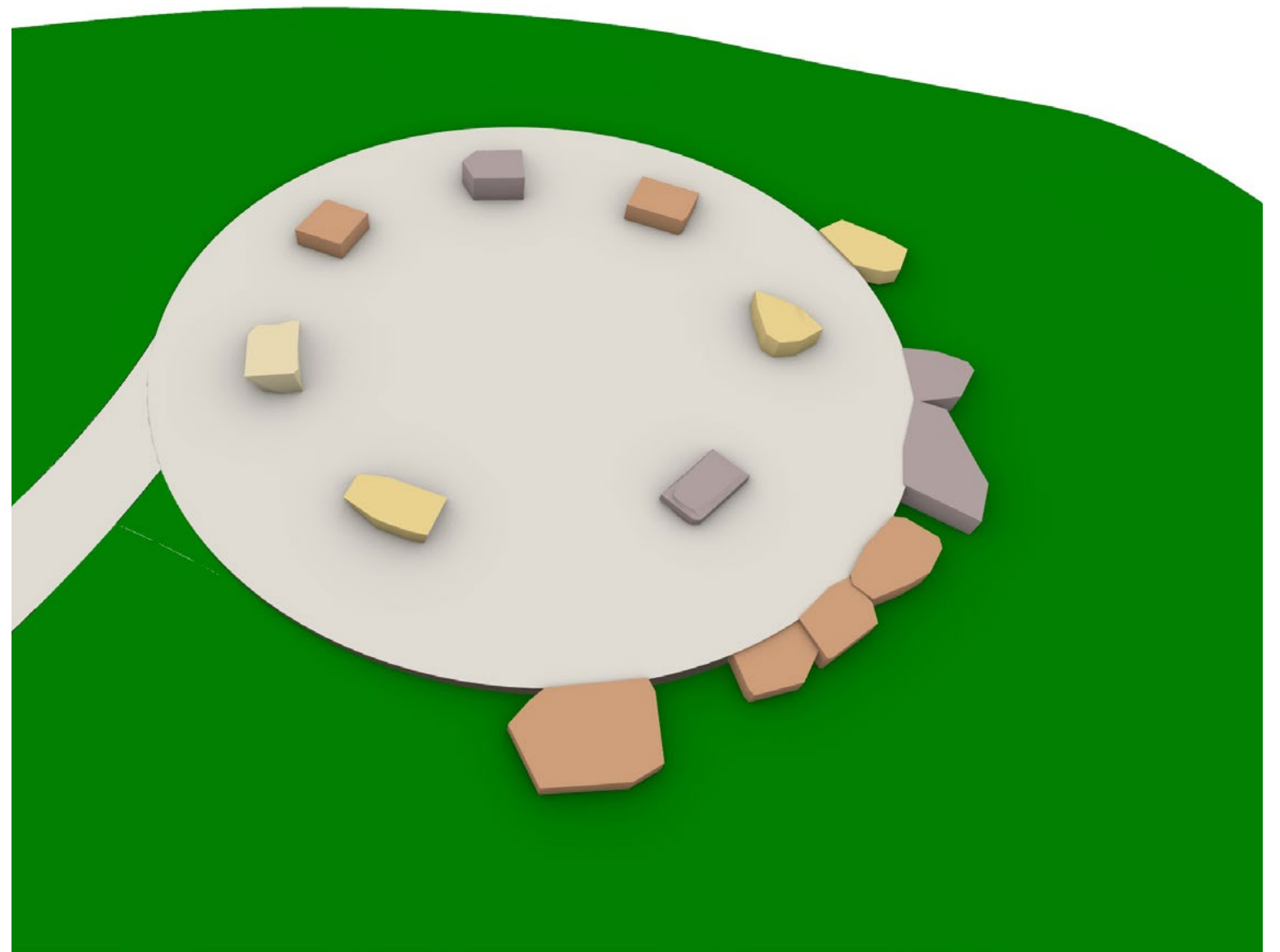


PHASE 1 MESSAGING / GATHERING CIRCLE

STONE INVENTORY FROM ST. PAUL



STUDY 01



STUDY 02

PHASE 1 MESSAGING / THRESHOLD OF CUES



1. PRAIRIE



2. GATHERING CIRCLE



3. THRESHOLD OF CUES



4. GATEWAYS

PHASE 1 MESSAGING / THRESHOLD OF CUES

KEY FEATURES



KEY THEMES

Mitákuye Oyás'in
Respect and Honor
Dakota Land

PHASE 1 MESSAGING / THRESHOLD OF CUES

PROPOSED FEATURES FROM CLS



Stepping Stones



Plant identification signage



Stone benches split by trees



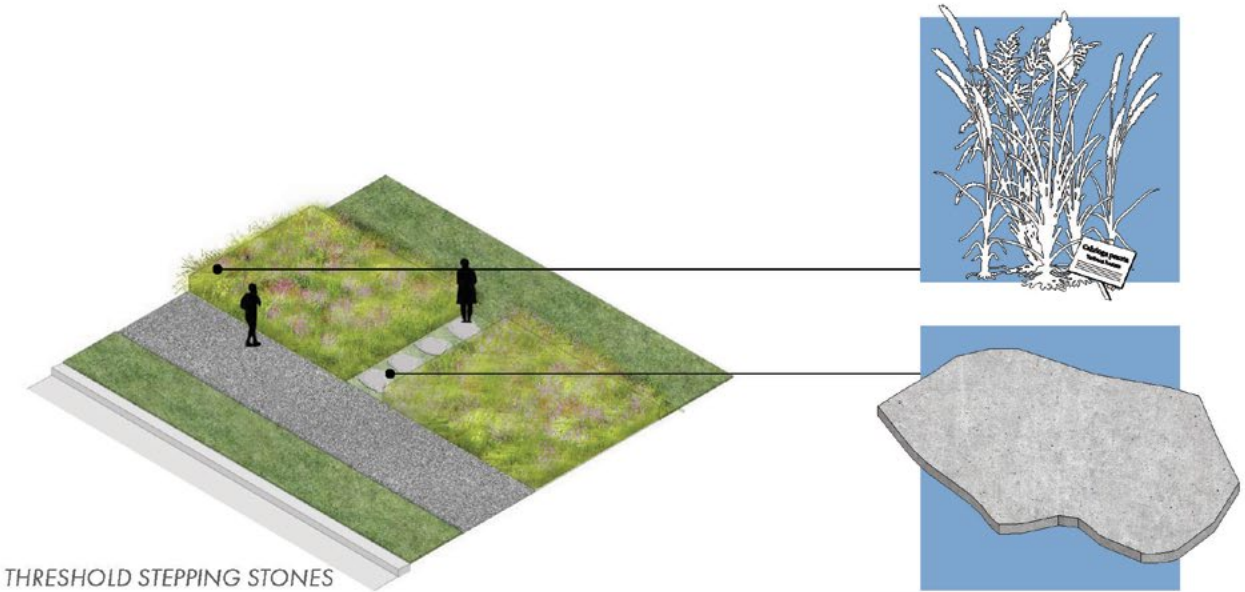
Messaging attached to stone benches



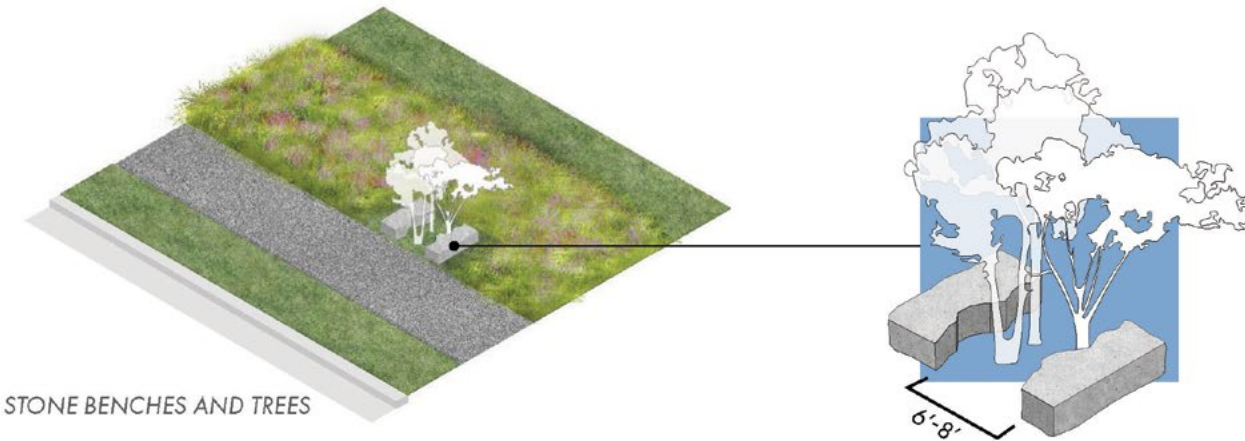
Expanded messaging on trail marker posts



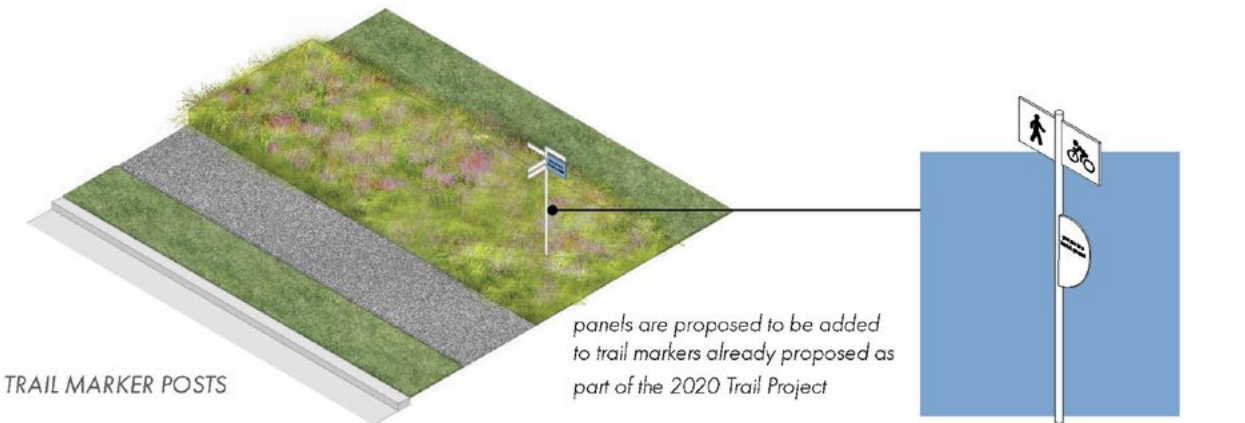
Signage attachment



THRESHOLD STEPPING STONES



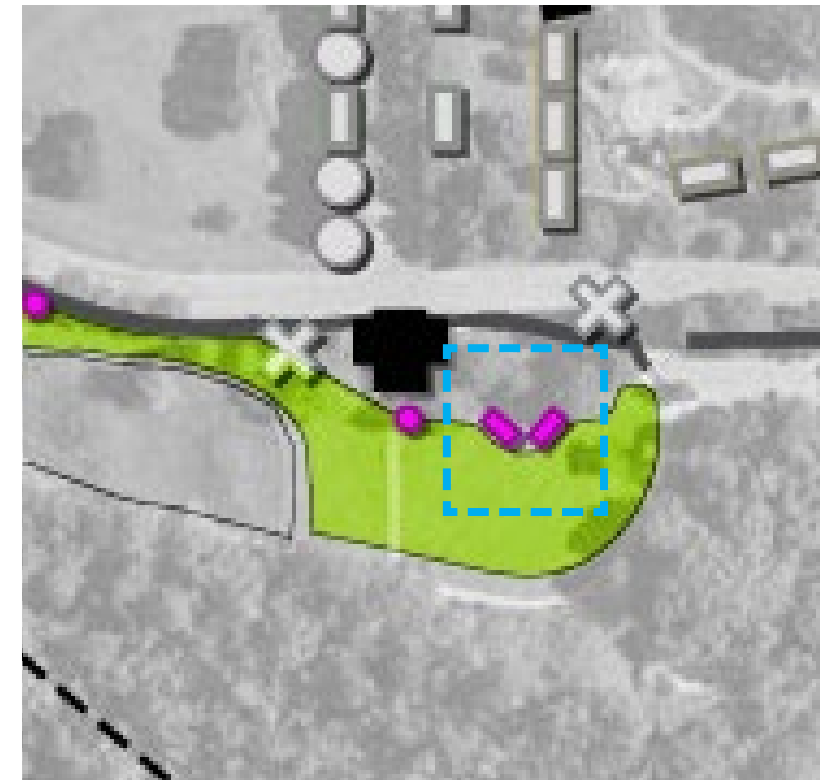
STONE BENCHES AND TREES



TRAIL MARKER POSTS

panels are proposed to be added to trail markers already proposed as part of the 2020 Trail Project

PHASE 1 MESSAGING / THRESHOLD OF CUES
PAVILION SEATING STUDIES



STUDY 01



STUDY 02



STUDY 03

PHASE 1 MESSAGING / THRESHOLD OF CUES

STONE INVENTORY FROM ST. PAUL



Limestone pieces for plant ID messaging

PHASE 1 MESSAGING / GATEWAYS



1. PRAIRIE



2. GATHERING CIRCLE

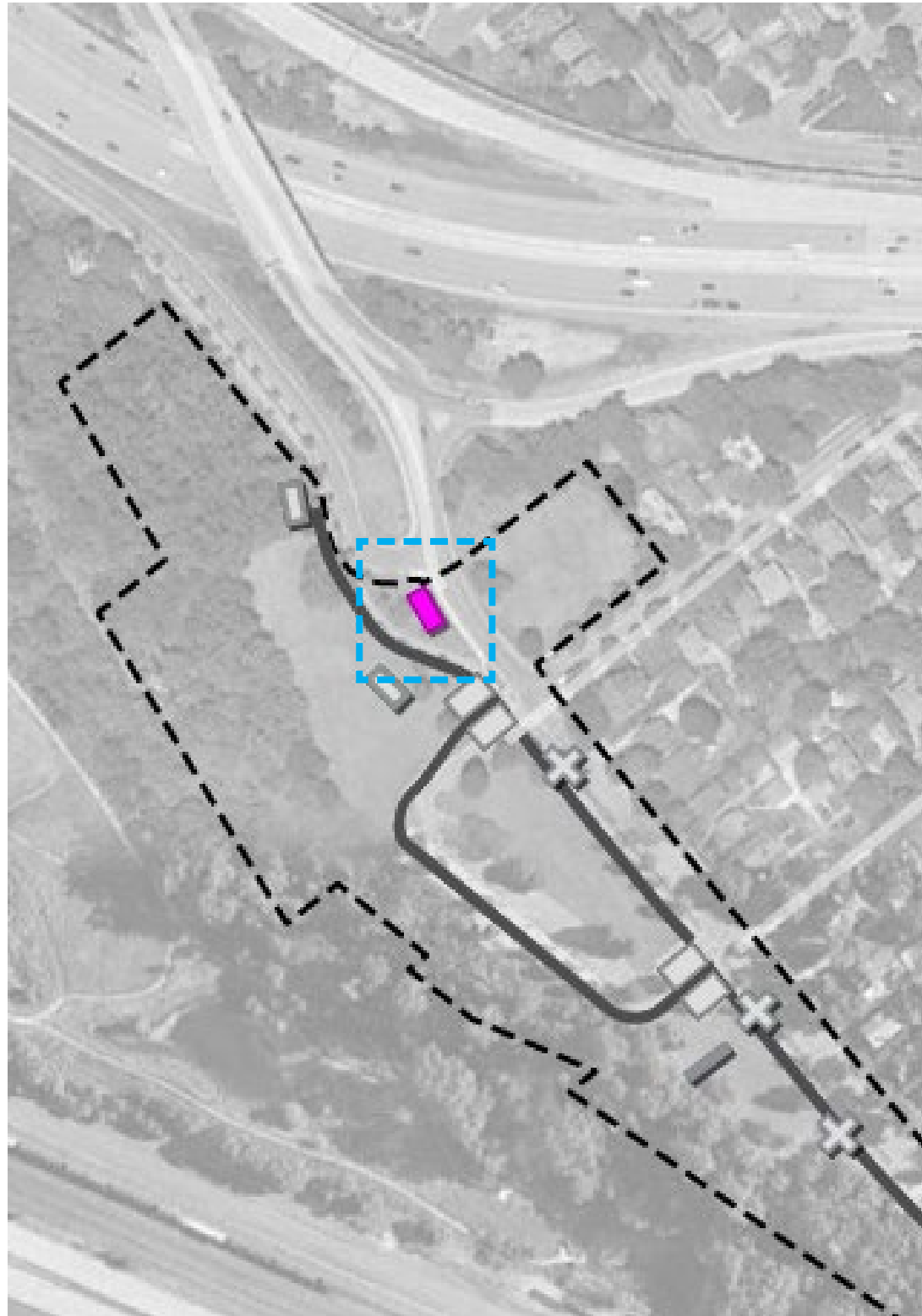


3. THRESHOLD OF CUES



4. GATEWAYS

PHASE 1 MESSAGING / GATEWAYS



West Gateway



East Gateway

KEY THEMES
Respect and Honor
Dakota Land

PHASE 1 MESSAGING / GATEWAYS
STONE INVENTORY FROM ST. PAUL



Granite Curb Pieces



PHASE 1 MESSAGING / GATEWAYS

GATEWAY STUDIES



STUDY 01



STUDY 02

MEETING AGENDA

1. Introductions (10 minutes)

- Introduce design team + project history

2. Phase I Design Updates (30 minutes)

- Review overall site approach
- Review proposed approach to prairie
- Review design studies for gathering circle and messaging



3. Community Discussion (40 minutes)

- Key Questions + Comments

4. Conclusions + Next Steps (10 minutes)

QUESTIONS + COMMENTS

- 1. What proposed features resonate with you? How do you anticipate using them?**
- 2. Which of the messages or themes resonate with you?**
- 3. How do you wish to engage with this site? Are you interested in involvement in future prairie maintenance?**
- 4. What spaces do you currently access? Is access to the airway beacon or other spaces important to you?**

QUESTIONS + COMMENTS

**If you have additional questions or comments related to this work,
please email Ellen Stewart:**

ellen.stewart@ci.stpaul.mn.us

MEETING AGENDA

1. Introductions (10 minutes)

- Introduce design team + project history

2. Phase I Design Updates (30 minutes)

- Review overall site approach
- Review proposed approach to prairie
- Review design studies for gathering circle and messaging

3. Community Discussion (40 minutes)

- Key Questions + Comments



4. Conclusions + Next Steps (10 minutes)

PHASE 1 MESSAGING / PROJECT SCHEDULE

