

North End Community Center

2022 Project Restart - Progress Update

March 30, 2022

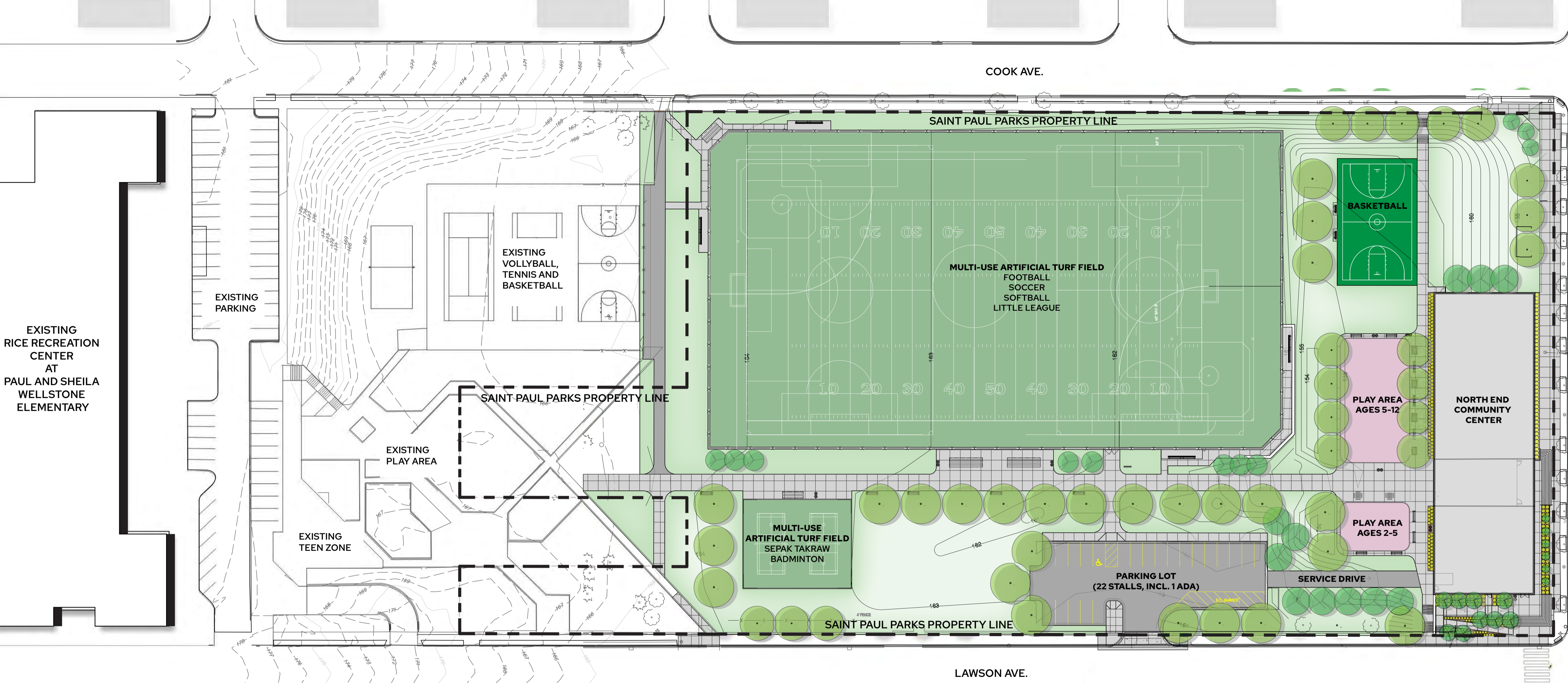


SNOW
KREILICH
ARCHITECTS

EXISTING CONDITIONS - FRITZ KLARK PARK



LANDSCAPE PLAN - NORTH END COMMUNITY CENTER

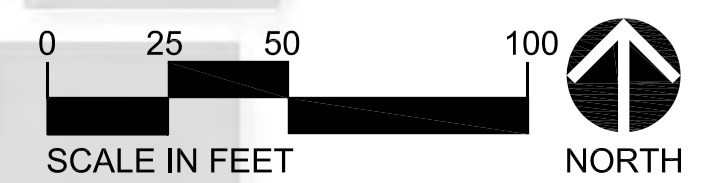


MARION ST.

W. WOODBRIDGE ST.

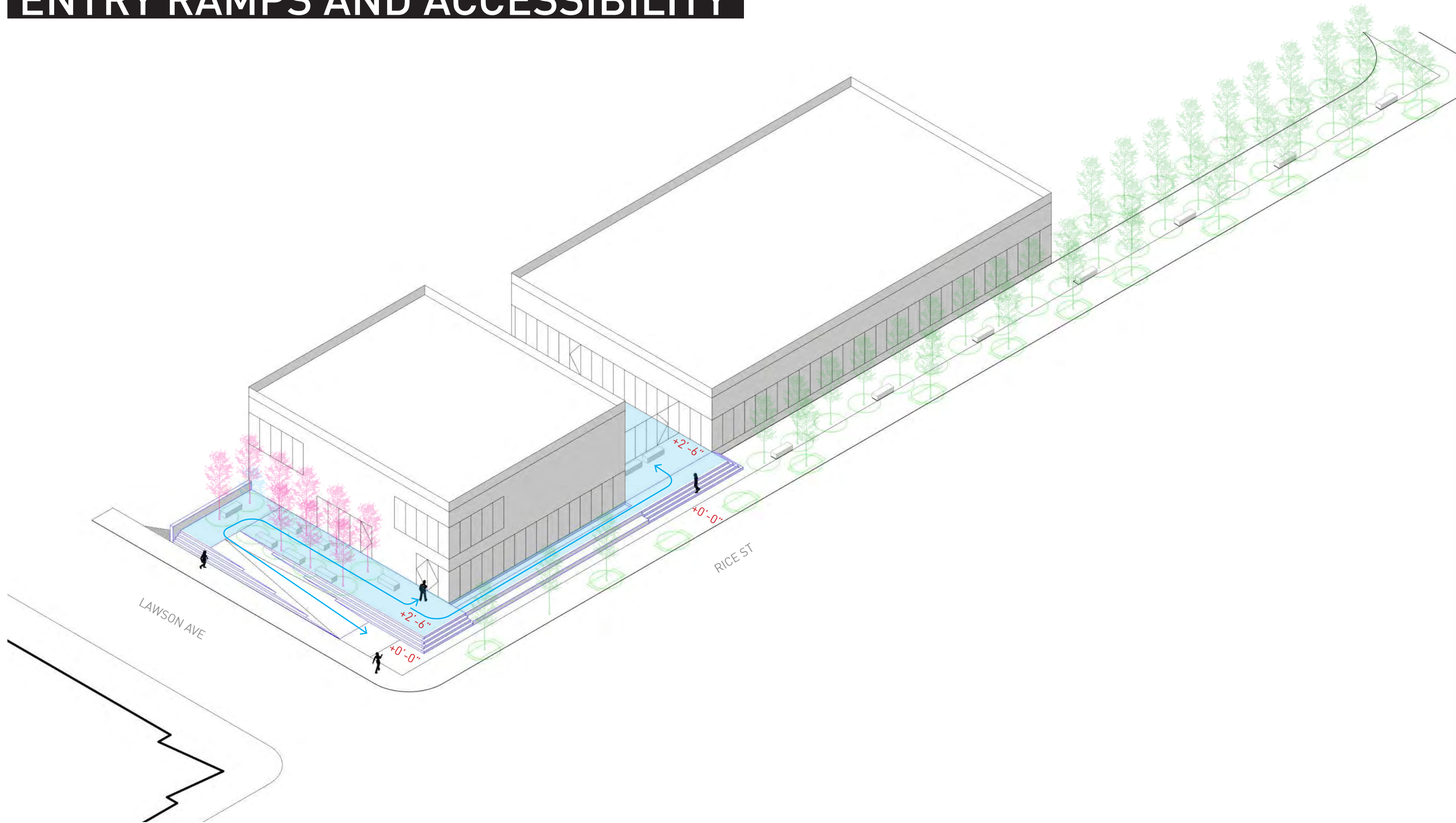
ALBEMARLE ST.

RICE ST.

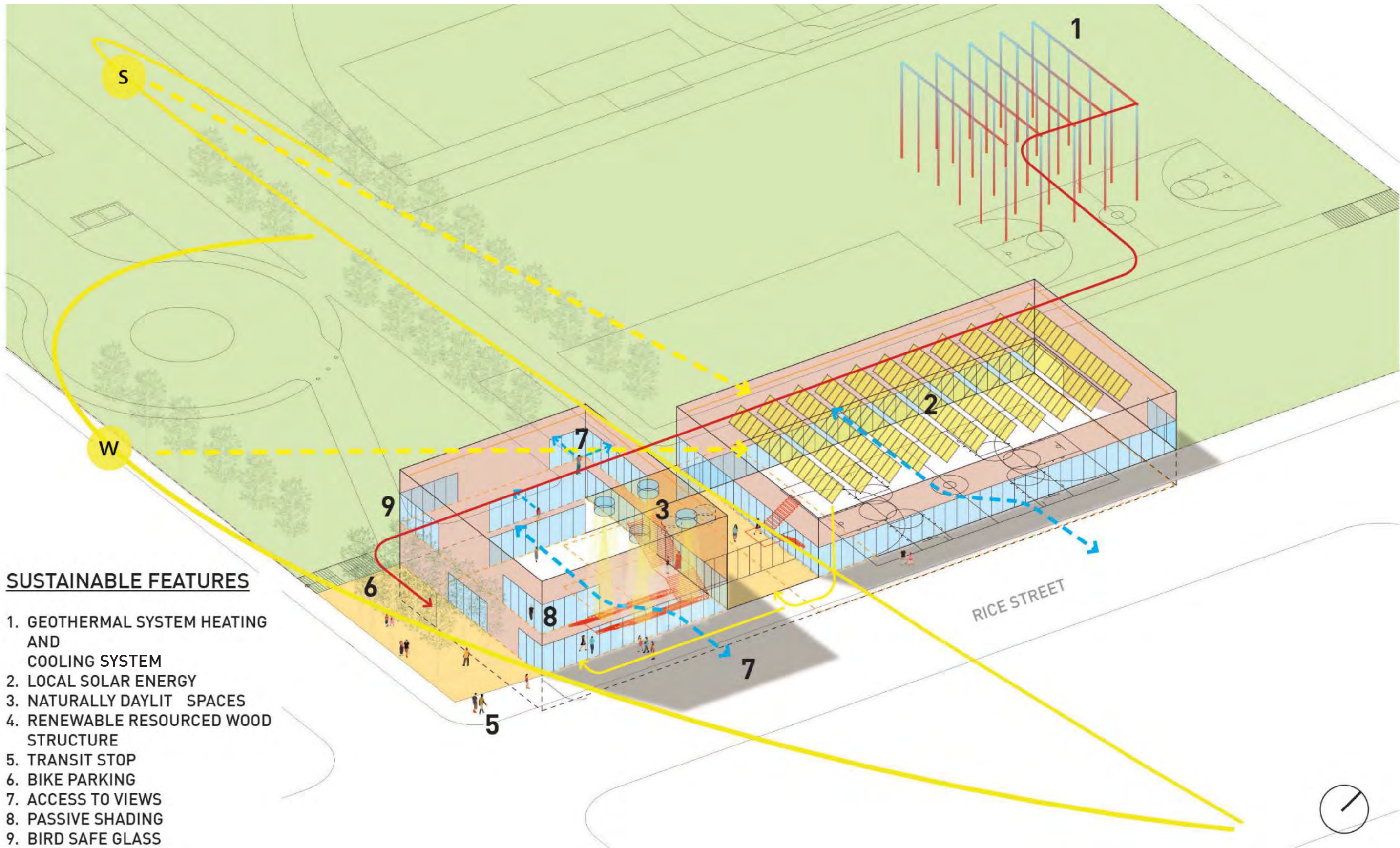


SAINT PAUL Parks and Recreation
Parks and Recreation Department
400 City Hall Annex
25 West Street
Saint Paul, MN 55102

ENTRY RAMPS AND ACCESSIBILITY



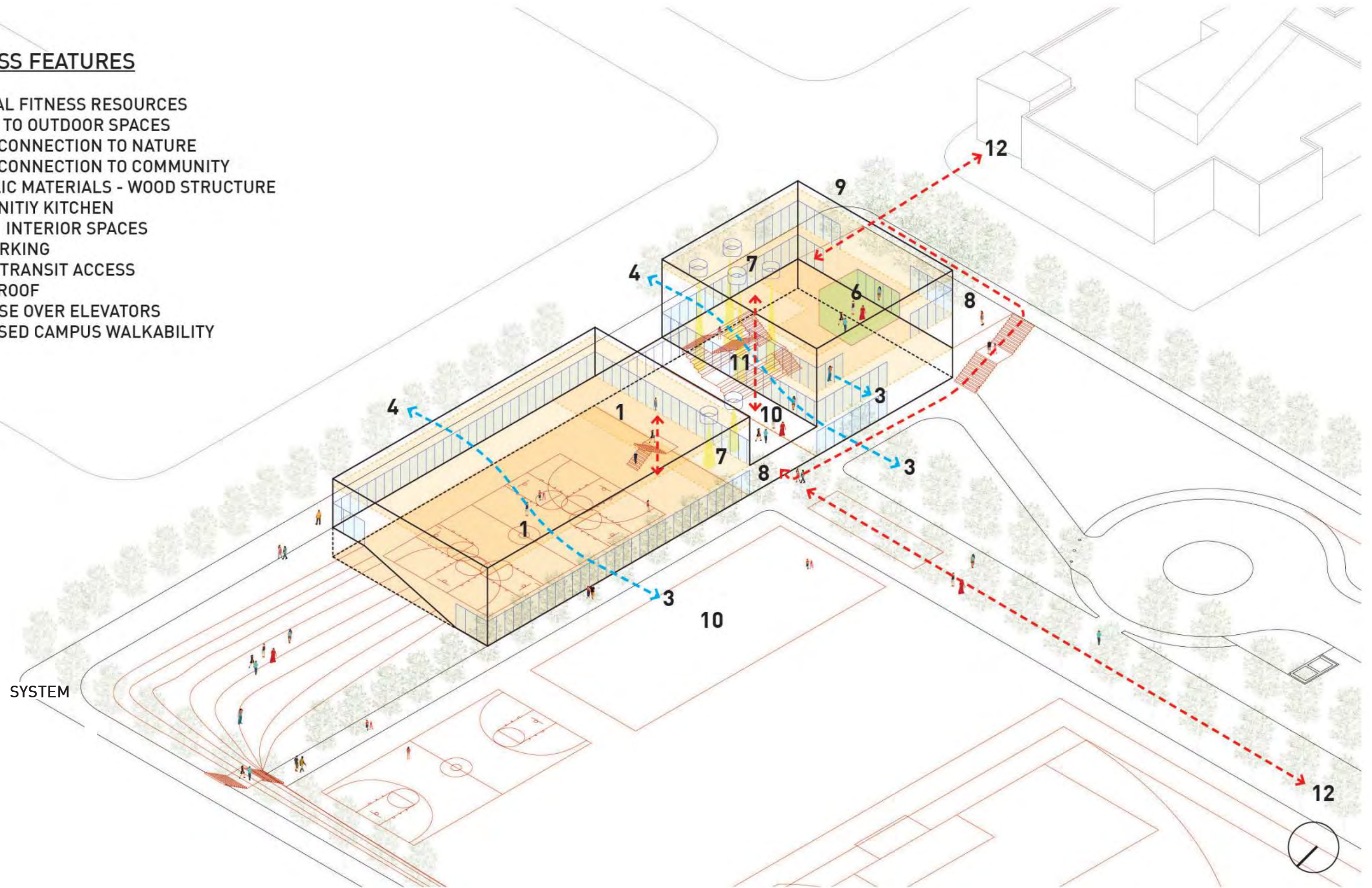
SUSTAINABLE FEATURES



SUSTAINABLE FEATURES

WELLNESS FEATURES

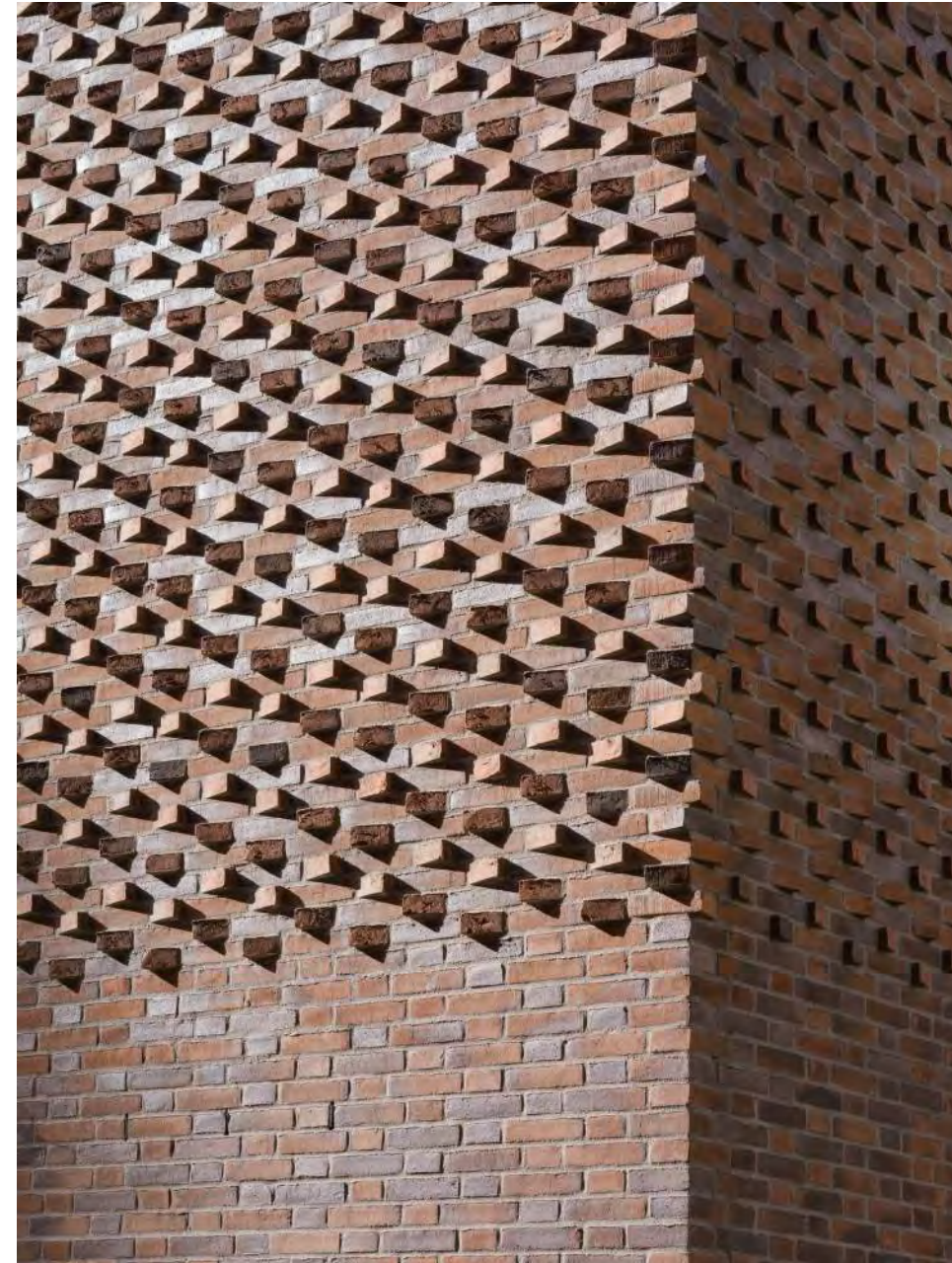
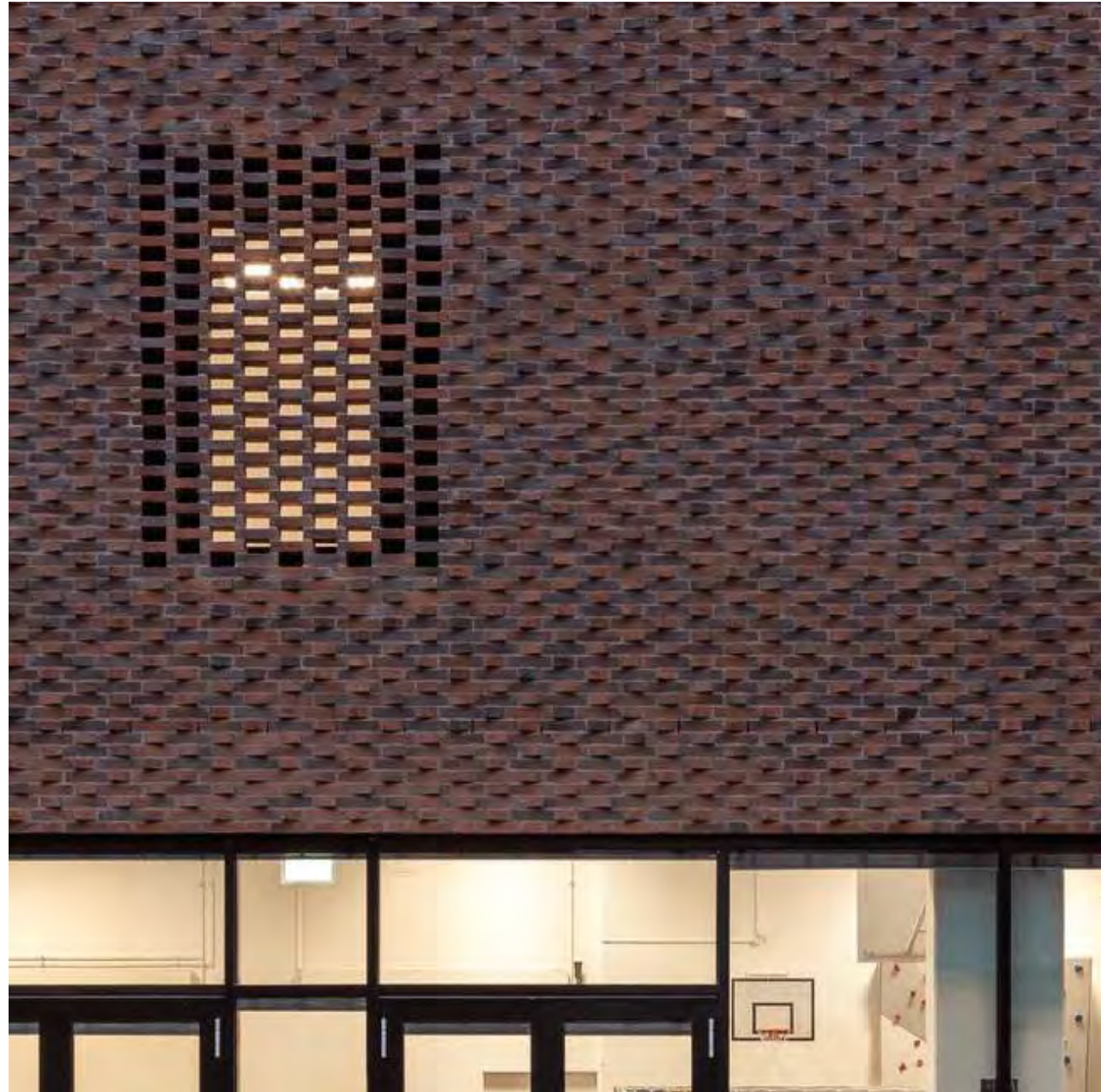
1. PHYSICAL FITNESS RESOURCES
2. ACCESS TO OUTDOOR SPACES
3. VISUAL CONNECTION TO NATURE
4. VISUAL CONNECTION TO COMMUNITY
5. BIOPHILIC MATERIALS - WOOD STRUCTURE
6. COMMUNITY KITCHEN
7. DAYLIT INTERIOR SPACES
8. BIKE PARKING
9. PUBLIC TRANSIT ACCESS
10. GREEN ROOF
11. STAIR USE OVER ELEVATORS
12. INCREASED CAMPUS WALKABILITY



LAWSON PLAZA



MASONRY



COURTYARD



COURTYARD



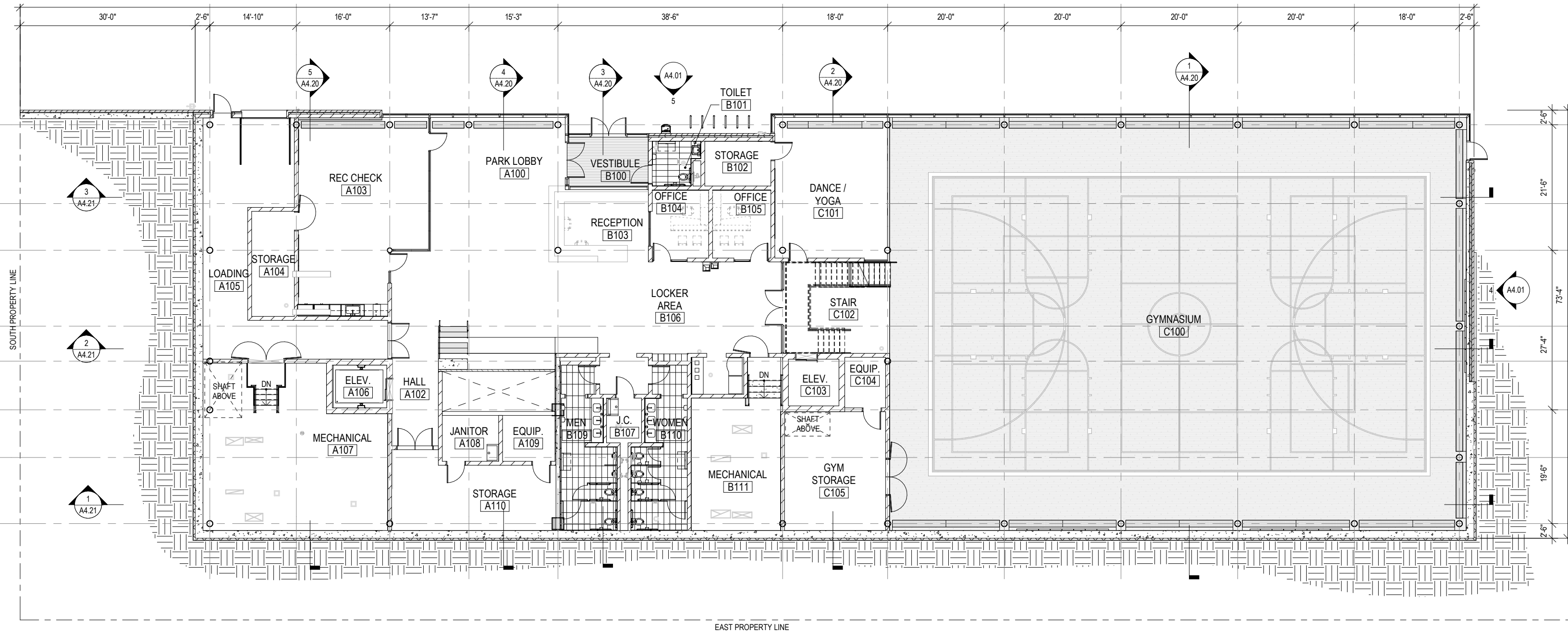
COURTYARD



PARK ENTRY

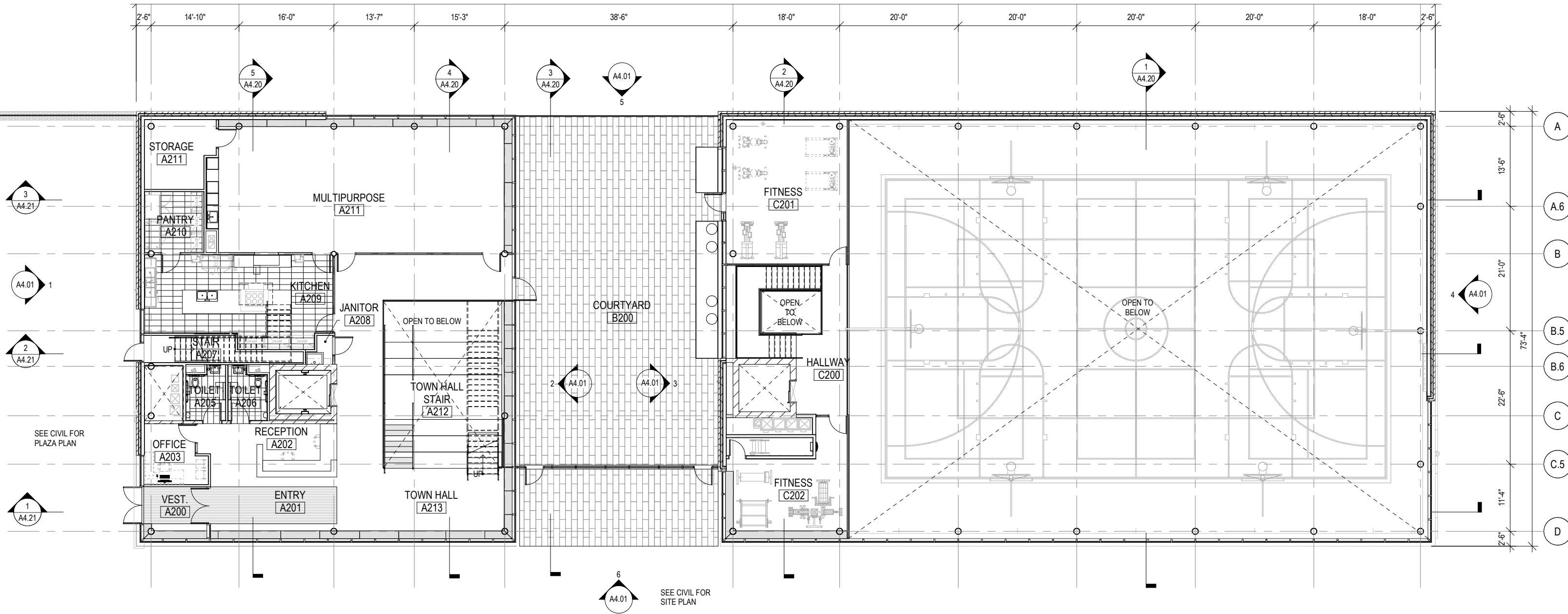


LOWER LEVEL FLOOR

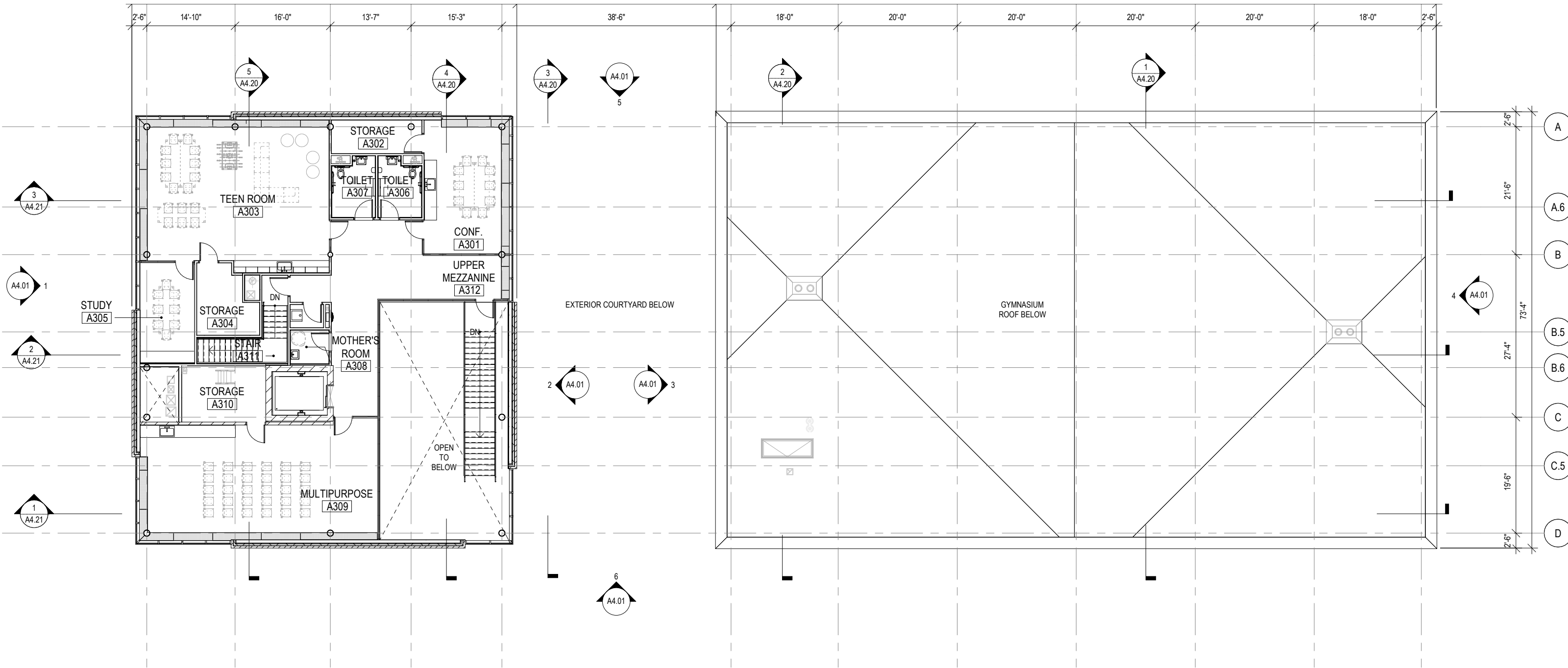


EAST PROPERTY LINE

MAIN LEVEL FLOOR



UPPER LEVEL FLOOR



TOWN HALL



KITCHEN



TOWN HALL



GYMNASIUM



GYMNASIUM



GYMNASIUM

