

PRELIMINARY TRAIL ALIGNMENTS

POINT DOUGLAS REGIONAL TRAIL



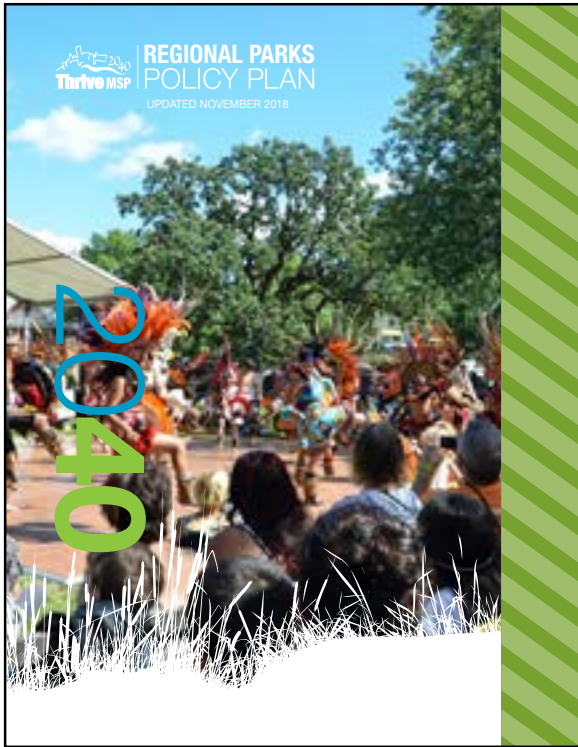
SUBMITTED BY THE CITY OF SAINT PAUL
DEPARTMENT OF PARKS & RECREATION
JANUARY 2020



SAINT PAUL
MINNESOTA

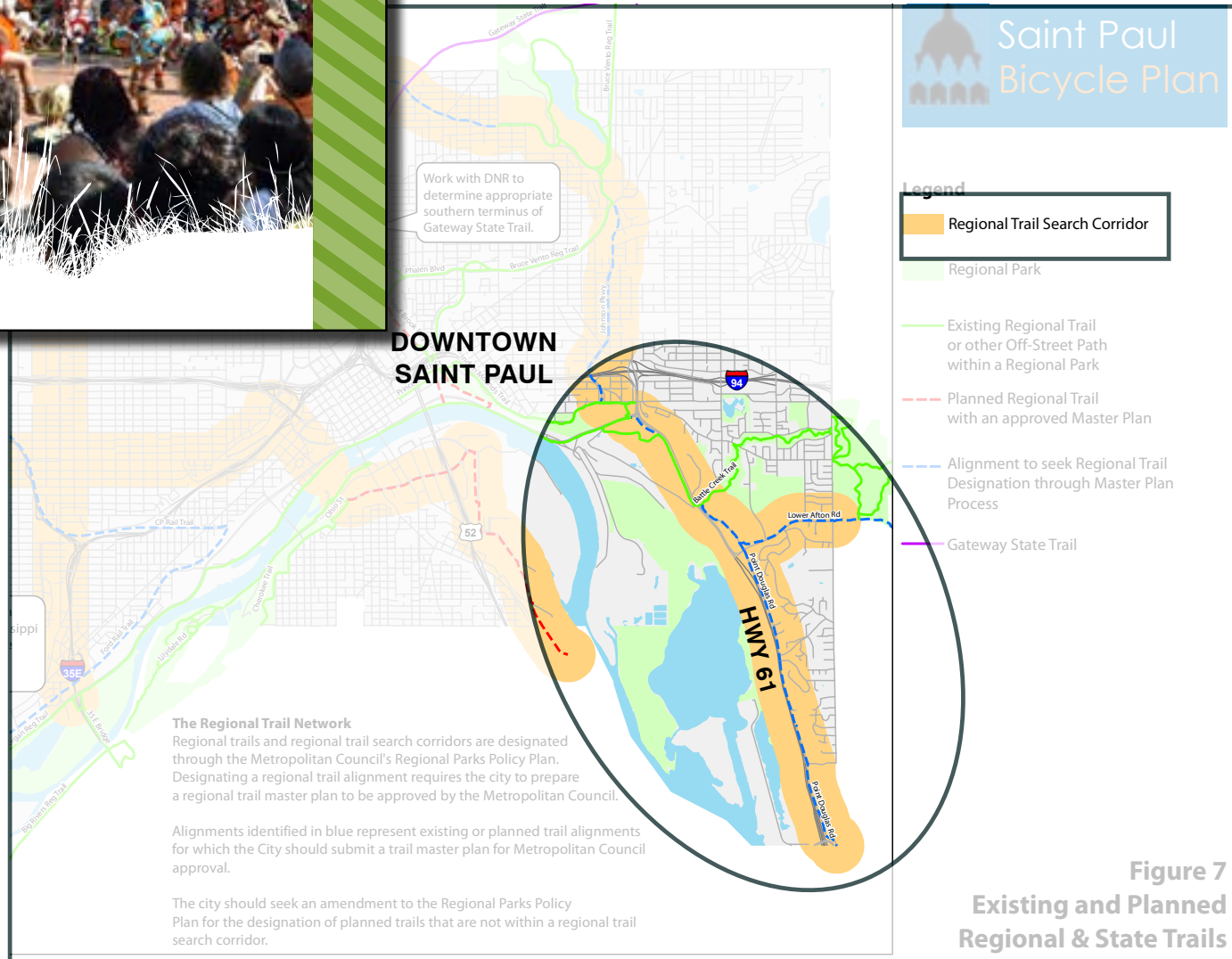
SCHEDULE

- Mar 2020 Survey
- Oct Release Opportunity and Constraints Presentation - Virtual
- Nov Transportation Committee Review
- Dec Release Preliminary Trail Alignment Presentation – Virtual
- Feb 2021 Release Preferred Trail Alignment Presentation - Virtual**
- Feb Parks and Rec Commission & Transportation Committee Approval
- Mar Draft Master Plan Document
- April St Paul City Council Approval
- May Met Council Approval
- Jun Final Master Plan Document

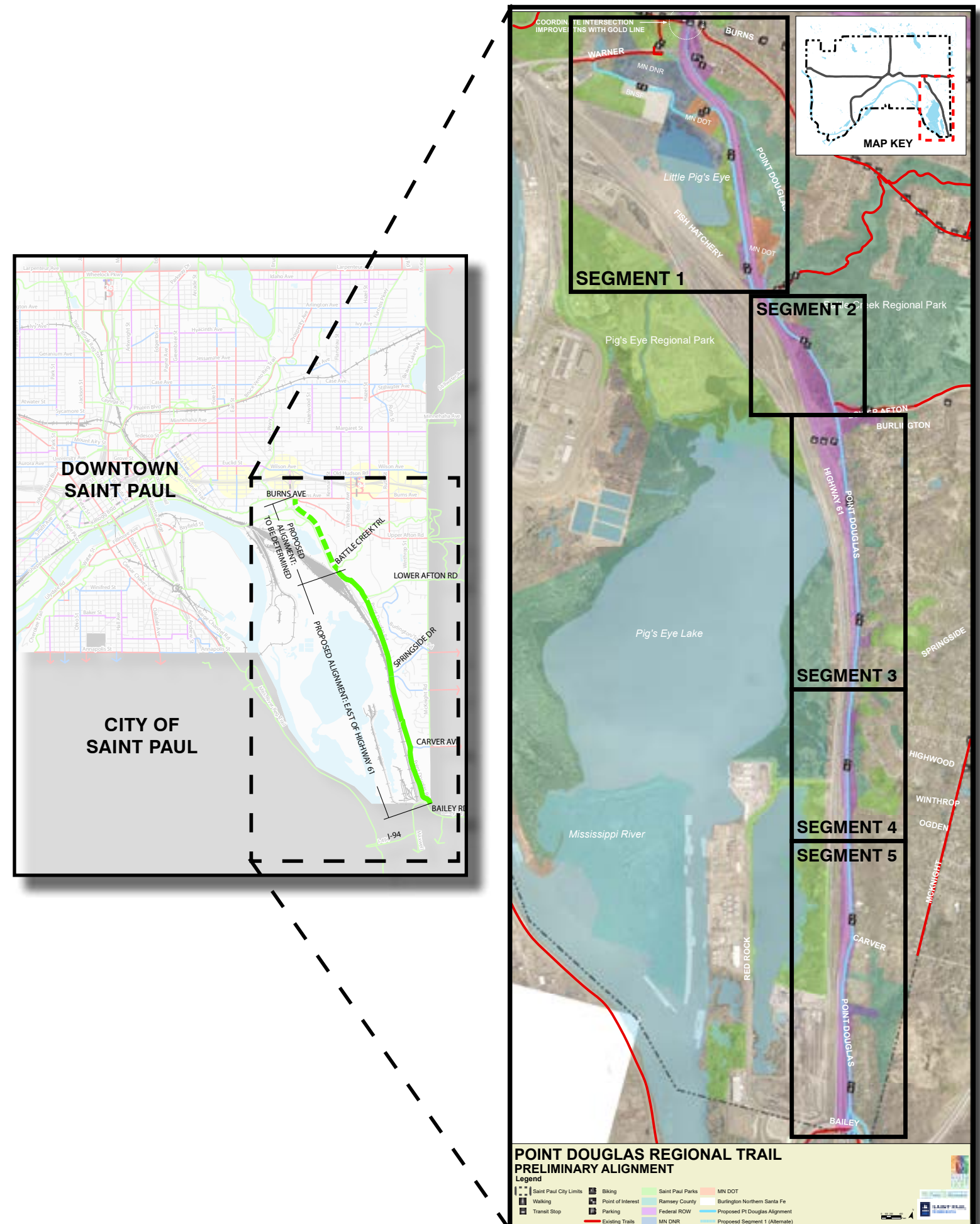


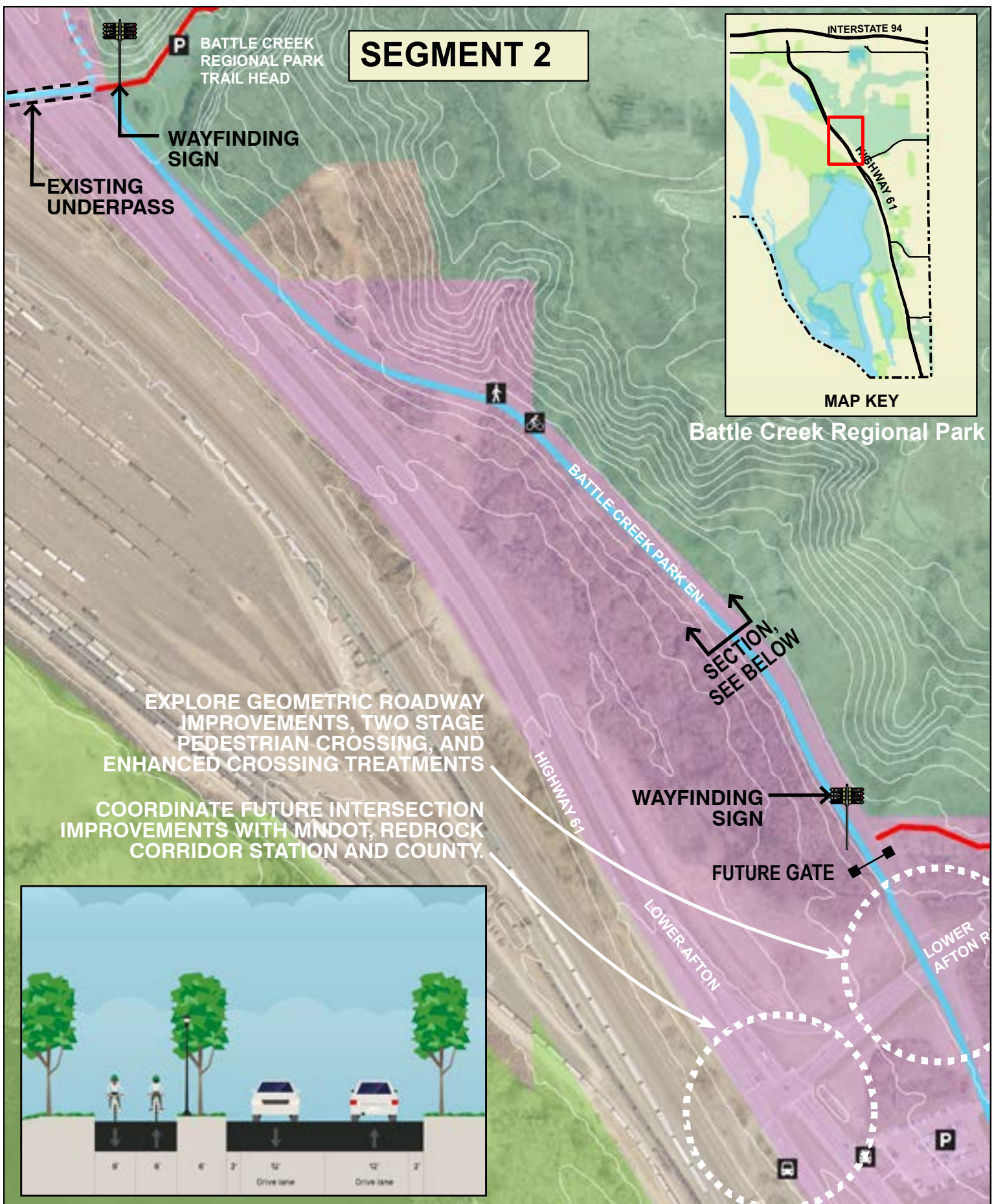
PROJECT PURPOSE

- POINT DOUGLAS WAS IDENTIFIED AS REGIONAL TRAIL SEARCH CORRIDOR BY METROPOLITAN COUNCIL
- TO PLAN A CONTINUOUS PROTECTED, OFF-STREET TRAIL
- IMPROVE SAFETY, ACCESSIBILITY, & CONNECTIVITY
- TO ENGAGE THE COMMUNITY



PROJECT LOCATION





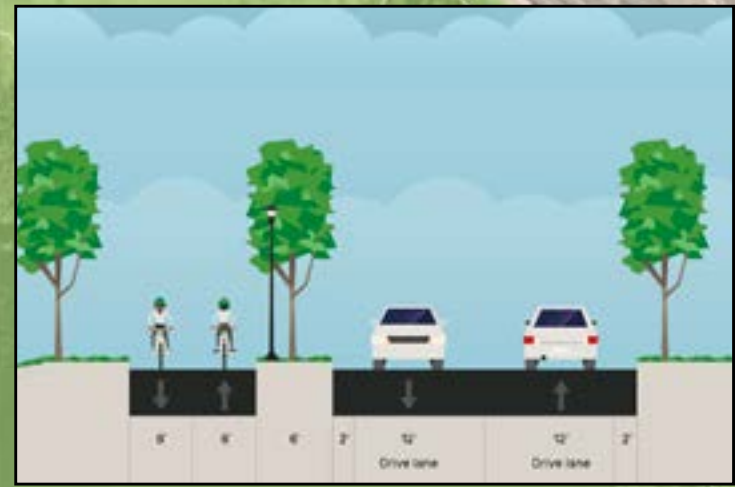
SEGMENT 2



Battle Creek Regional Park

EXPLORE GEOMETRIC ROADWAY IMPROVEMENTS, TWO STAGE PEDESTRIAN CROSSING, AND ENHANCED CROSSING TREATMENTS

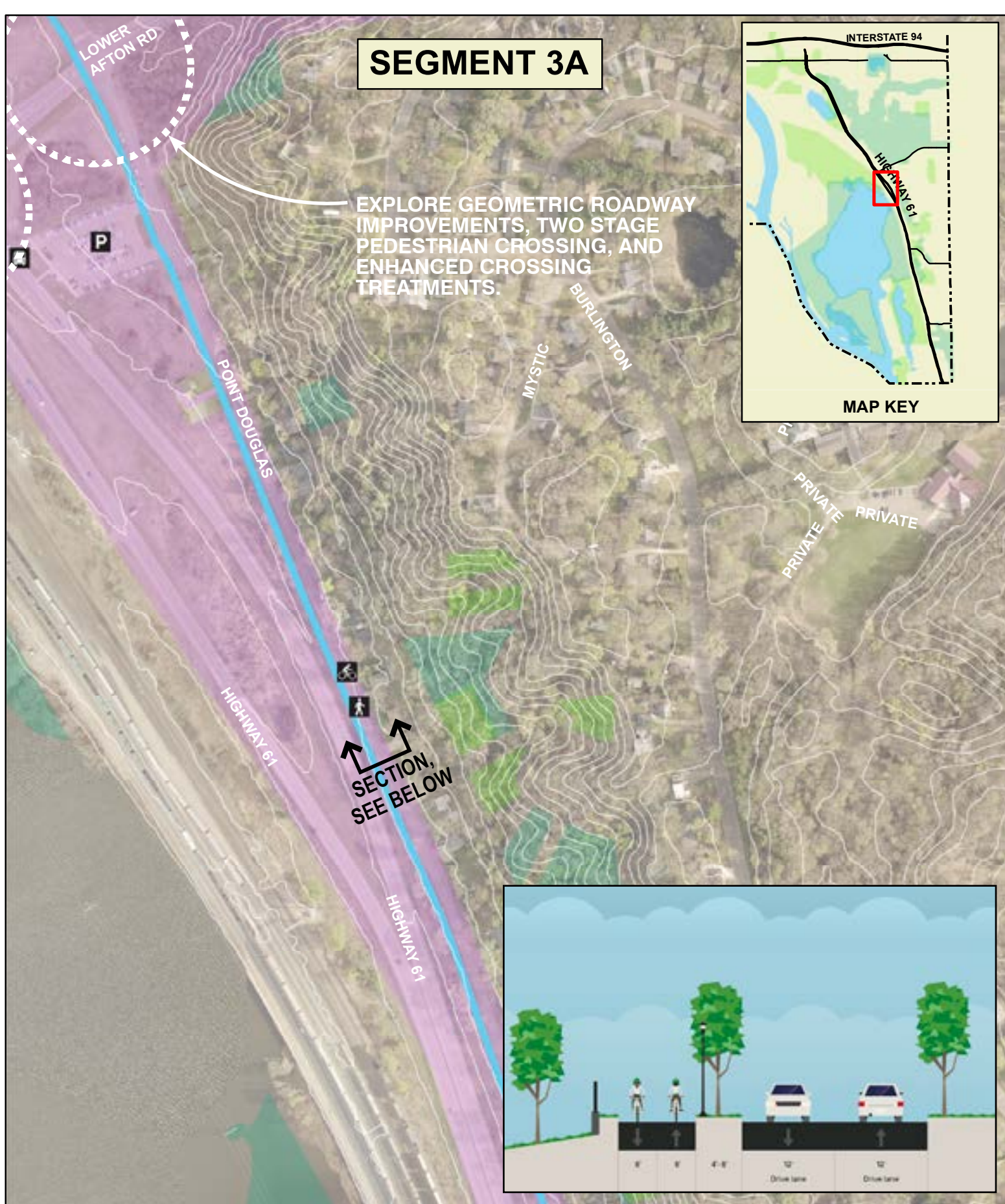
COORDINATE FUTURE INTERSECTION IMPROVEMENTS WITH MNDOT, REDROCK CORRIDOR STATION AND COUNTY.



POINT DOUGLAS REGIONAL TRAIL PRELIMINARY ALIGNMENT SEGMENT 2

0 150 300 600 Feet

Walking	Transit Stops	Saint Paul Parks	Proposed Pt Douglas Trail Alignment
Parking	Existing Trails	Ramsey Co.	Proposed Segment 1 (Alternate)
Biking	Federal ROW	City Boundary	10' Contour Lines

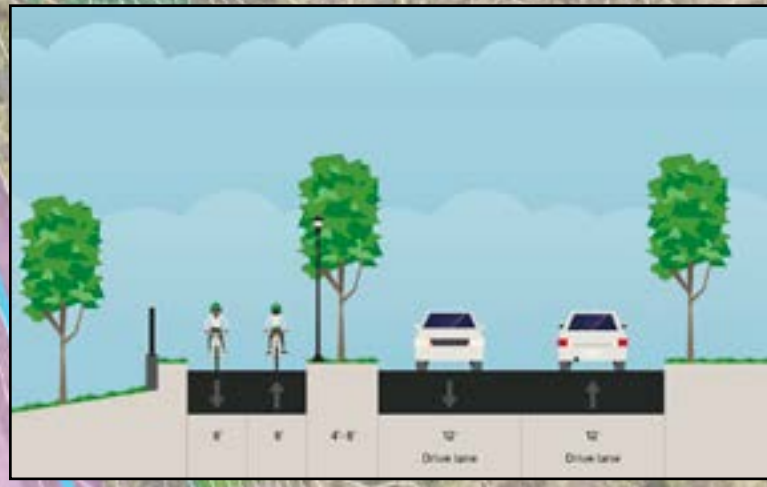


SEGMENT 3A



EXPLORE GEOMETRIC ROADWAY IMPROVEMENTS, TWO STAGE PEDESTRIAN CROSSING, AND ENHANCED CROSSING TREATMENTS.

SECTION, SEE BELOW

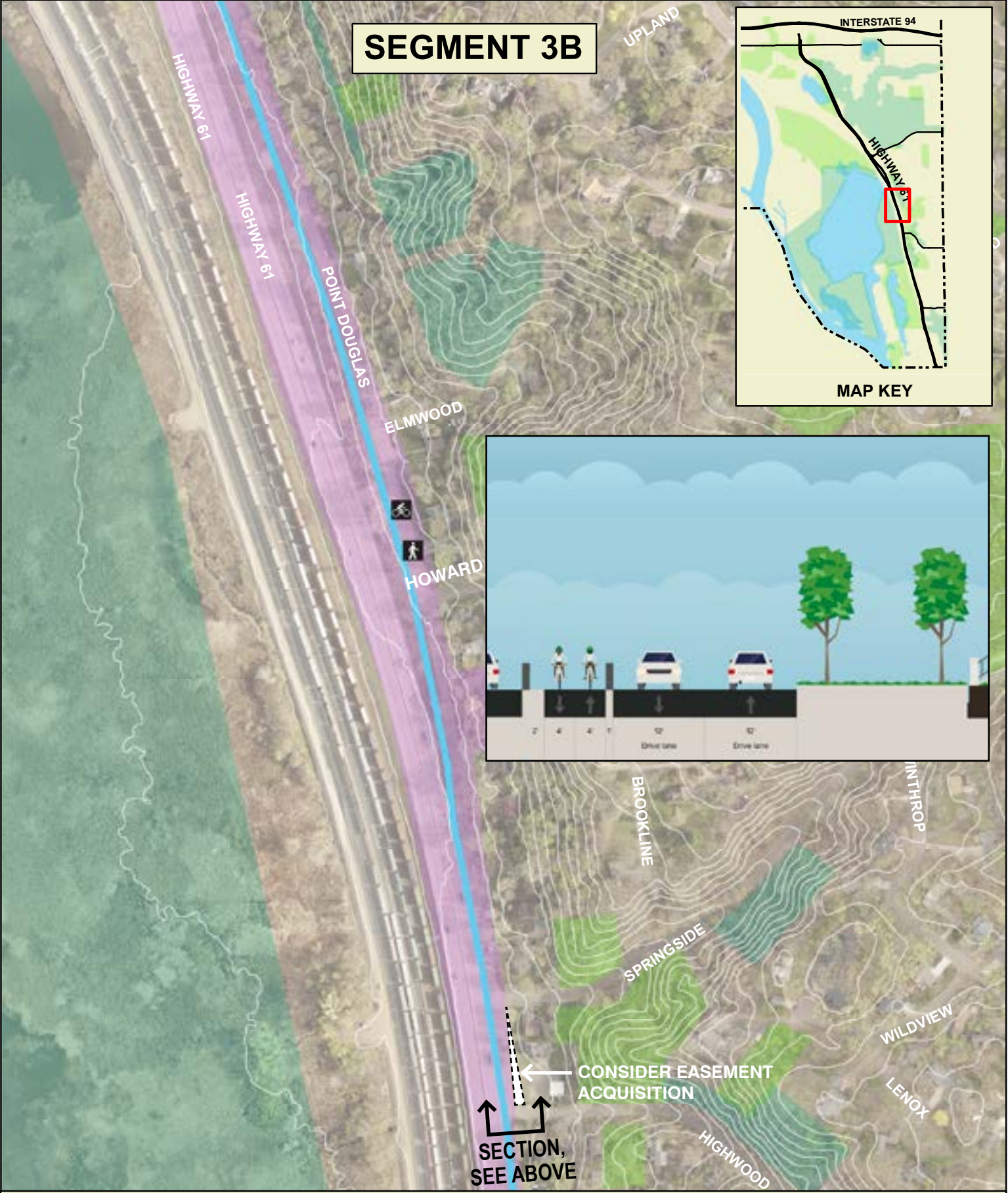


POINT DOUGLAS REGIONAL TRAIL PRELIMINARY ALIGNMENT SEGMENT 3A

0 150 300 600 Feet

Walking	Transit Stops	Ramsey Co.	Proposed Pt Douglas Trail Alignment
Parking	Federal ROW	City Boundary	10' Contour Lines
Biking	Saint Paul Parks	City Boundary	Proposed Pt Douglas Trail Alignment

SEGMENT 3B



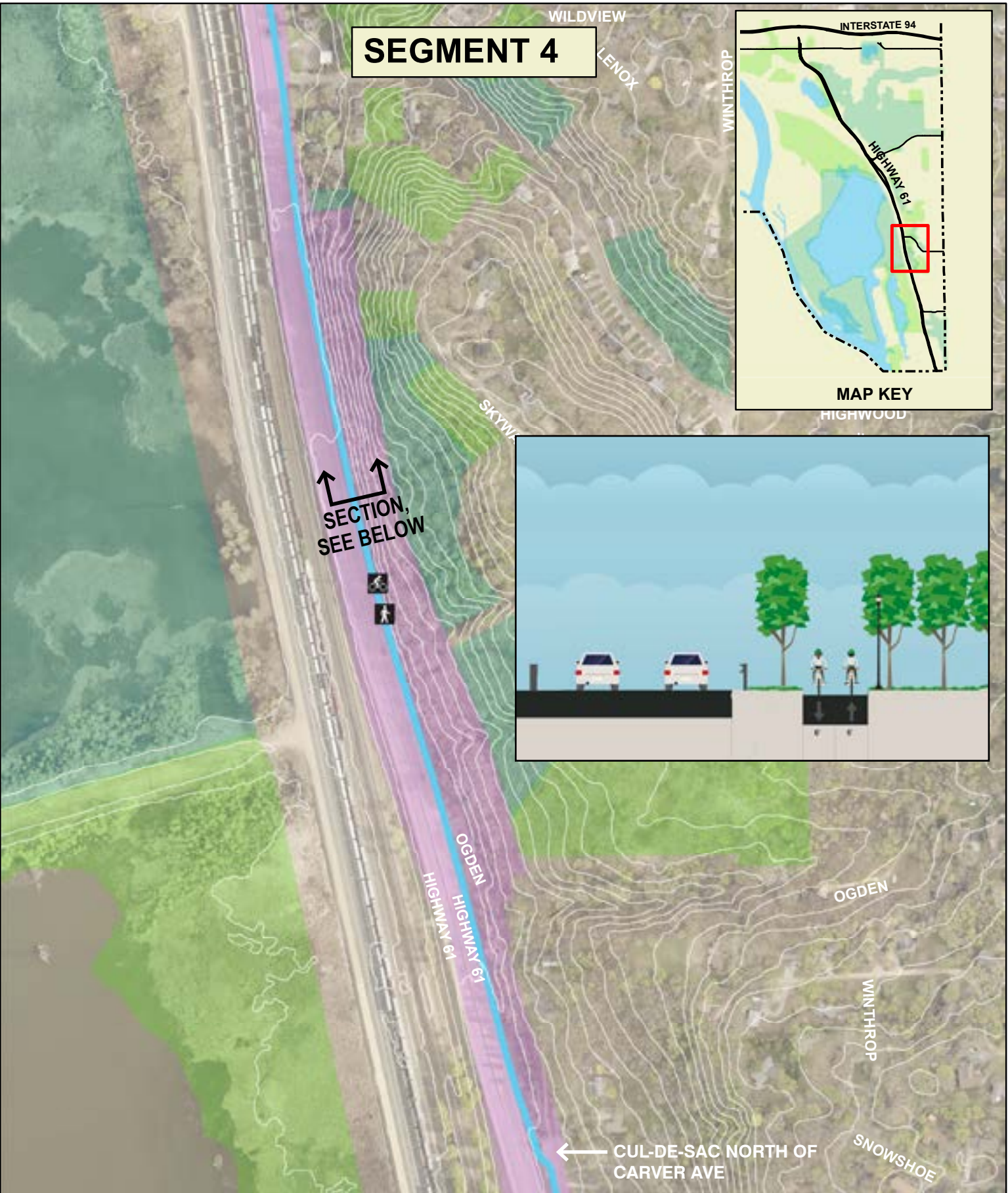
**POINT DOUGLAS REGIONAL TRAIL
PRELIMINARY ALIGNMENT
SEGMENT 3B**

0 150 300 600 Feet

Legend

- Walking
- Biking
- Federal ROW
- Saint Paul Parks
- Ramsey Co.
- City Boundary
- 10' Contour Lines
- Proposed Pt Douglas Trail Alignment

SEGMENT 4

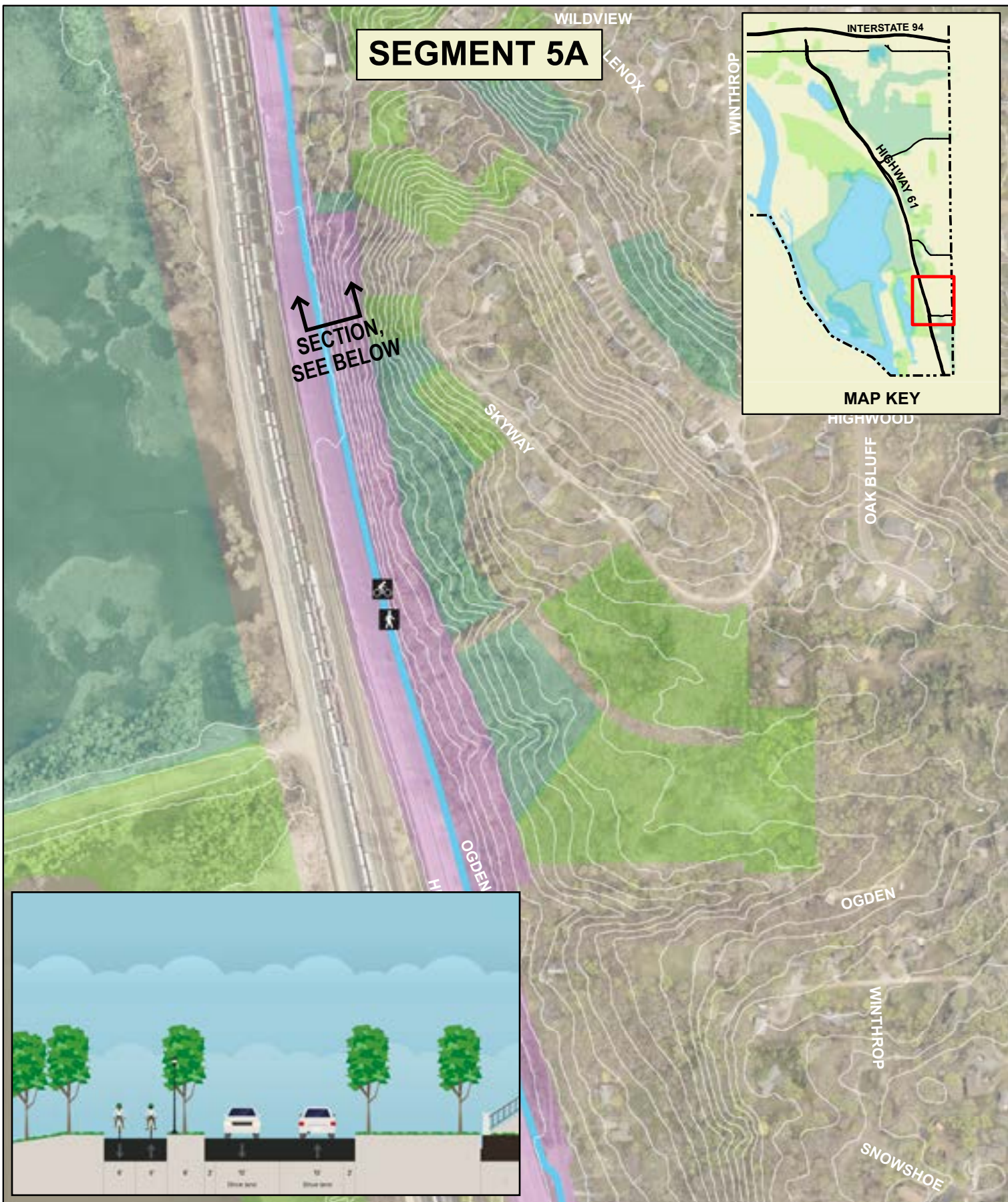


**POINT DOUGLAS REGIONAL TRAIL
PRELIMINARY ALIGNMENT
SEGMENT 4**

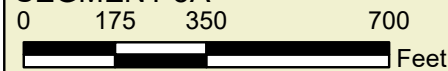
0 175 350 700 Feet

Legend

- Walking
- Biking
- Federal ROW
- Saint Paul Parks
- Ramsey Co.
- City Boundary
- 10' Contour Lines
- Proposed Pt Douglas Trail Alignment

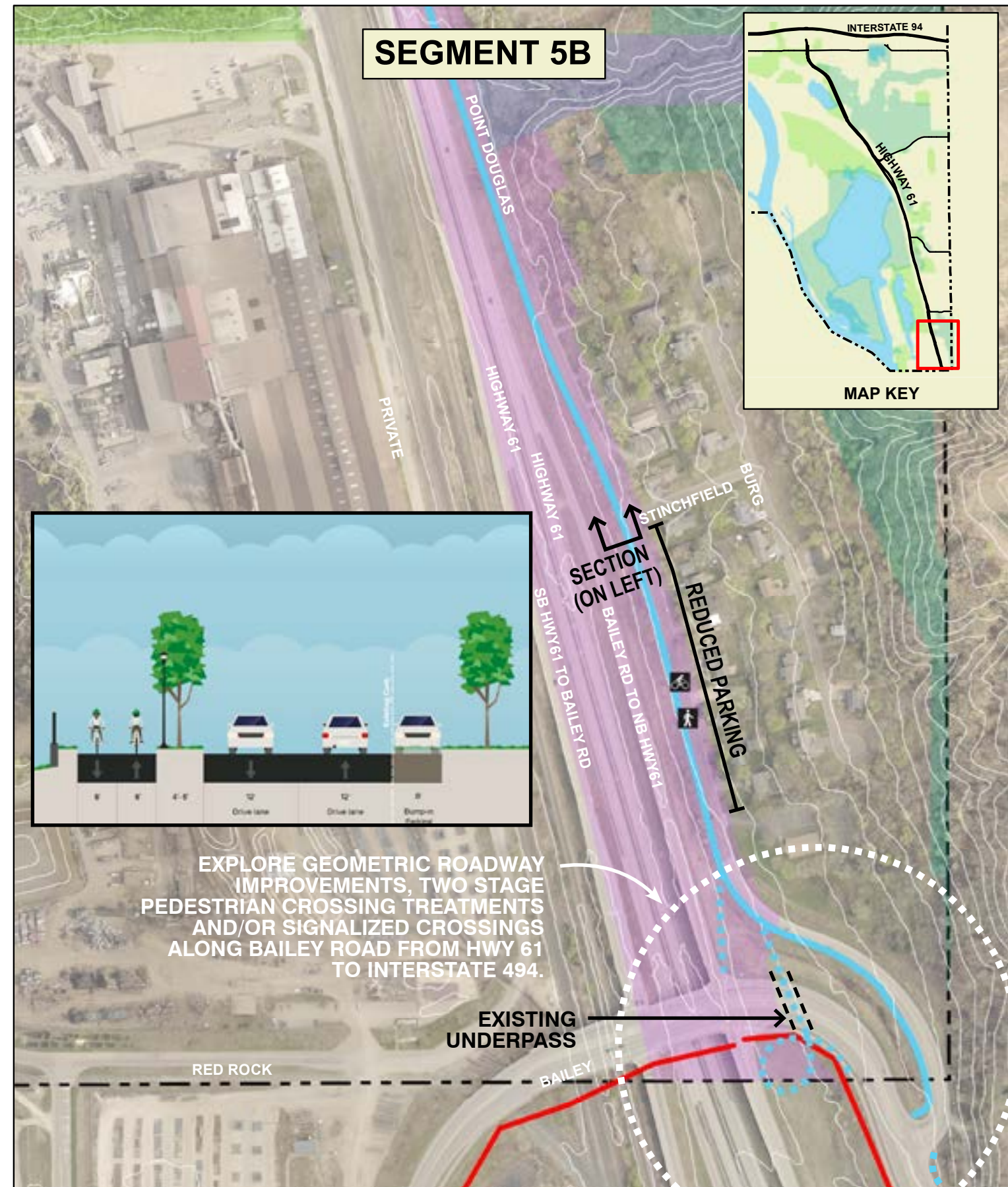


**POINT DOUGLAS REGIONAL TRAIL
PRELIMINARY ALIGNMENT
SEGMENT 5A**



Legend

- Walking
- Biking
- Federal ROW
- Saint Paul Parks
- Ramsay Co.
- City Boundary
- 10' Contour Lines
- Proposed Pt Douglas Trail Alignment



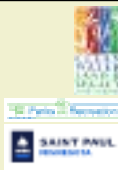
EXPLORE GEOMETRIC ROADWAY IMPROVEMENTS, TWO STAGE PEDESTRIAN CROSSING TREATMENTS AND/OR SIGNALIZED CROSSINGS ALONG BAILEY ROAD FROM HWY 61 TO INTERSTATE 494.

**POINT DOUGLAS REGIONAL TRAIL
PRELIMINARY ALIGNMENT
SEGMENT 5B**



Legend

- Walking
- Biking
- Existing Trails
- Federal ROW
- Saint Paul Parks
- Ramsay Co.
- City Boundary
- 10' Contour Lines
- Proposed Pt Douglas Trail Alignment
- Bailey Rd Alternate Trail Alignment



NEXT STEPS

- FOCUS GROUPS
- DEVELOP PREFERRED TRAIL ALIGNMENT
- TENTATIVE SCHEDULE (*Italics = Public Review Periods*)

Mar 2020	Survey
Oct	Release Opportunity and Constraints Presentation - Virtual
<i>Nov</i>	<i>Public Review Period</i>
<i>Nov</i>	<i>Public Review Period</i>
<i>Nov</i>	<i>Transportation Committee Review</i>
Dec	Release Preliminary Trail Alignment Presentation – Virtual
Jan 2021	<i>30-Day Public Review Period</i>
Feb	Release Preferred Trail Alignment Presentation - Virtual
<i>Feb</i>	<i>30-Day Public Review Period</i>
Feb	Parks and Rec Commission & Transportation Committee Approval
<i>Mar</i>	<i>Draft Master Plan Document</i>
<i>Mar</i>	<i>30-Day Public Review Period</i>
April	St Paul City Council Approval
May	Met Council Approval
Jun	Final Master Plan Document

Project Manager: Brett Hussong

Phone: 651-266-6420

Email: brett.hussong@ci.stpaul.mn.us



**SAINT PAUL
MINNESOTA**

