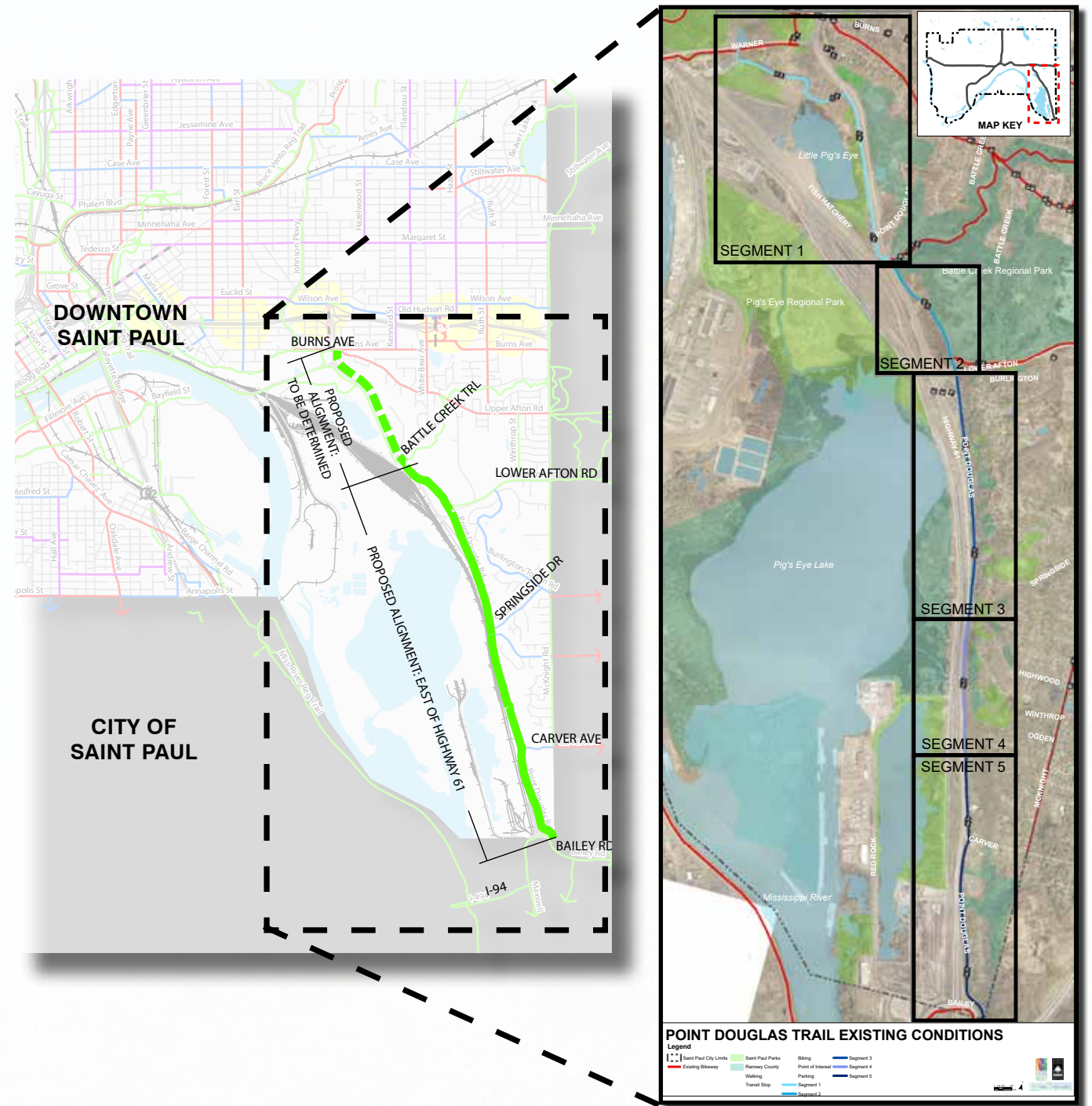
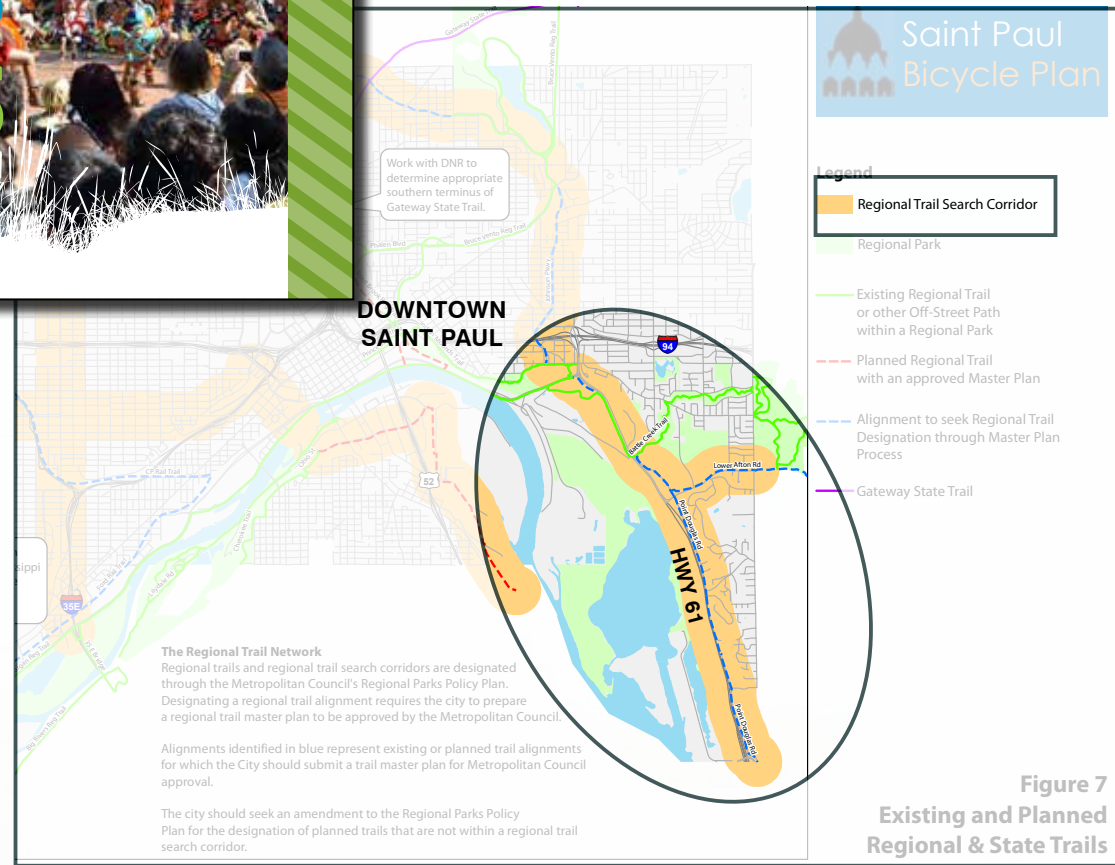


# Regional Trail Master Plan **POINT DOUGLAS**

**Project Manager**  
Brett Hussong, Landscape Architect  
brett.hussong@ci.stpaul.mn.us  
651-266-6420

# PROJECT SCOPE

- Engage the community
- Plan a continuous off-street trail connection between Saint Paul and Washington County along Point Douglas Road
- Increase safety, accessibility, awareness & connectivity
- Complete committee, city and Met Council approvals to seek future design and implementation funding



# PROJECT TIMELINE

## PHASE I: Corridor Evaluation

- Community Engagement
- Existing Conditions Review
- Analysis & Opportunities Study



**FALL  
2020**

**SPRING  
2021**



## PHASE II: Design & Direction

- Community and Technical Advisory Group Meetings
- Intersection & Transition Areas Study
- Design Alternatives
- Operations & Maintenance Planning
- Public Comment Period
- Preferred Cross-Sections & Prioritized Design Guidelines

**SUMMER  
2021**



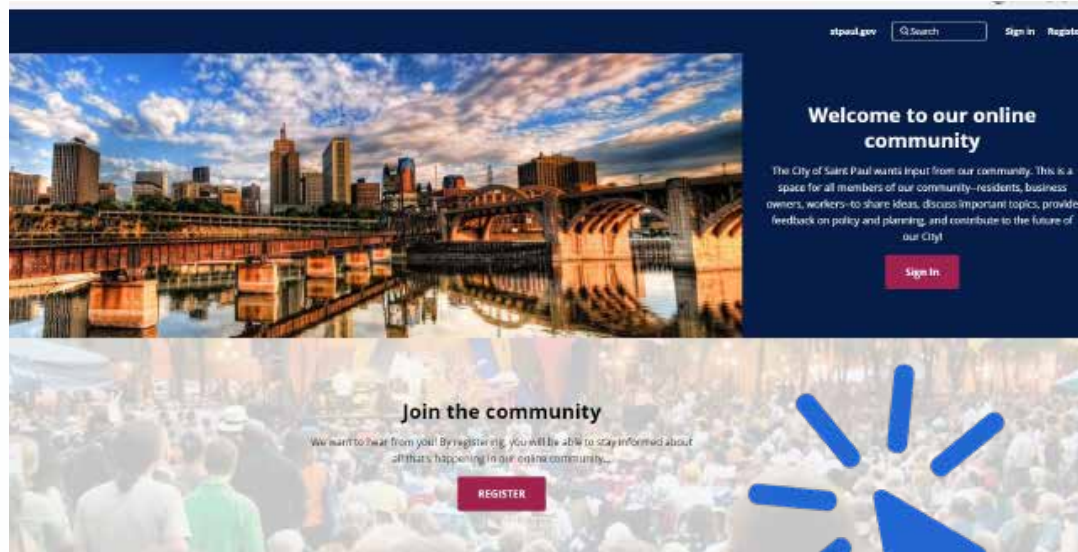
## PHASE III: Final Master Plan & Approvals

- Final Plan Development
- Approvals: Saint Paul Commissions, City Council, Metropolitan Council



**FALL 2021**

# COMMUNITY ENGAGEMENT



## Advisory Committee Members

Jane Prince - Ward 7 City Council Member  
Stephanie Harr - Ward 7 Legislative Aide  
Betsy Mowry Voss - Southeast Community Organization Ex Dir.  
Ben Karp - Ramsey County  
Connor Schaefer - Washington County  
Melissa Barnes - MnDOT Metro North Area Manager  
Nicholas Olson - MnDOT North Area Engineer  
Jacob Rueter - MnDOT Mississippi River Trail  
Jim Levitt - DNR East Metro Fisheries Asst. Manager  
Gina Bonsignore - DNR Regional Planner  
Lauren Degennaro - National Park Service  
Colleen O'Conner Toberman - Friends of the Mississippi River  
Nicole Soderholm - Ramsey-Washington Metro Watershed  
Angie Tillges - Great River Passage Initiative  
Bonnie & John Watkins - District 1 Resident  
Melissa Wenzel - District 1 Board Member  
Peter Wickert - District 1 Resident

## Public Hearing Date & Location:

October 8, 2020. Virtual presentation  
December 7, 2020. Virtual presentation  
January 25, 2021 South East Side Community Meeting  
October 2021. 30-day virtual review of master plan document.

## Date & Location:

December 2020 Horn of Africa Community of USA  
March 22, 2021 Parks and Recreation Youth Commission

Advisory

COMMUNITY  
REVIEW

FOCUS  
GROUPS

# EQUITY ANALYSIS



Residential mailer

## Race & Ethnicity (2015-2019)

White	10,379	43.7%
Of Color	13,378	56.3%
Black or African American alone	6,060	25.5%
American Indian and Alaskan Native alone	suppressed	
Asian or Pacific Islander alone	5,326	22.4%
Other alone	suppressed	
Two or more races alone	1,026	4.3%
Hispanic or Latino	2,085	8.8%

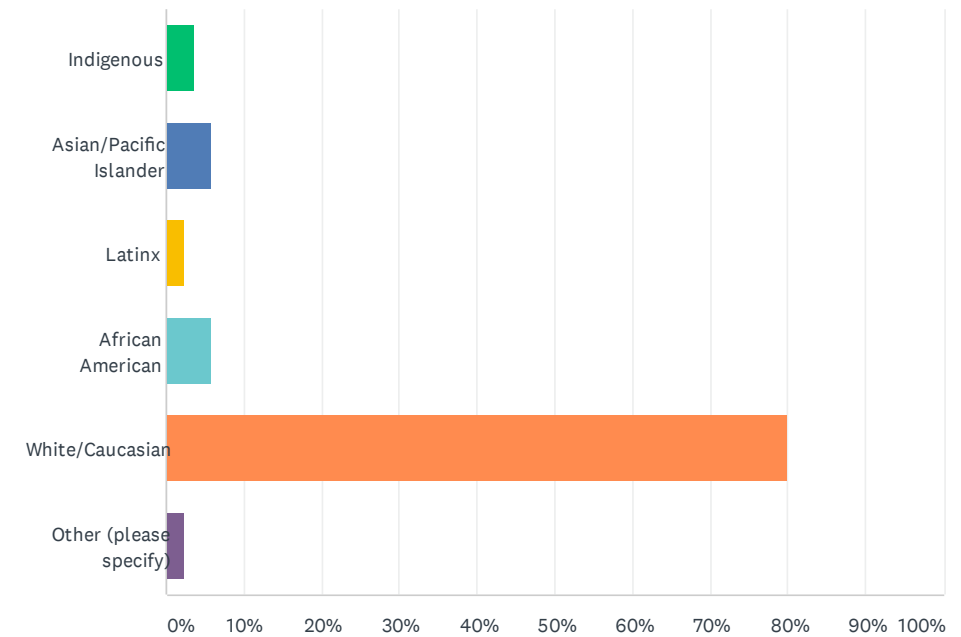
District 1 Demographics



**PARKS AND RECREATION DEPARTMENT**  
 DESIGN AND CONSTRUCTION DIVISION

## Q1 Please self-identify your race/ethnicity

Answered: 85 Skipped: 2

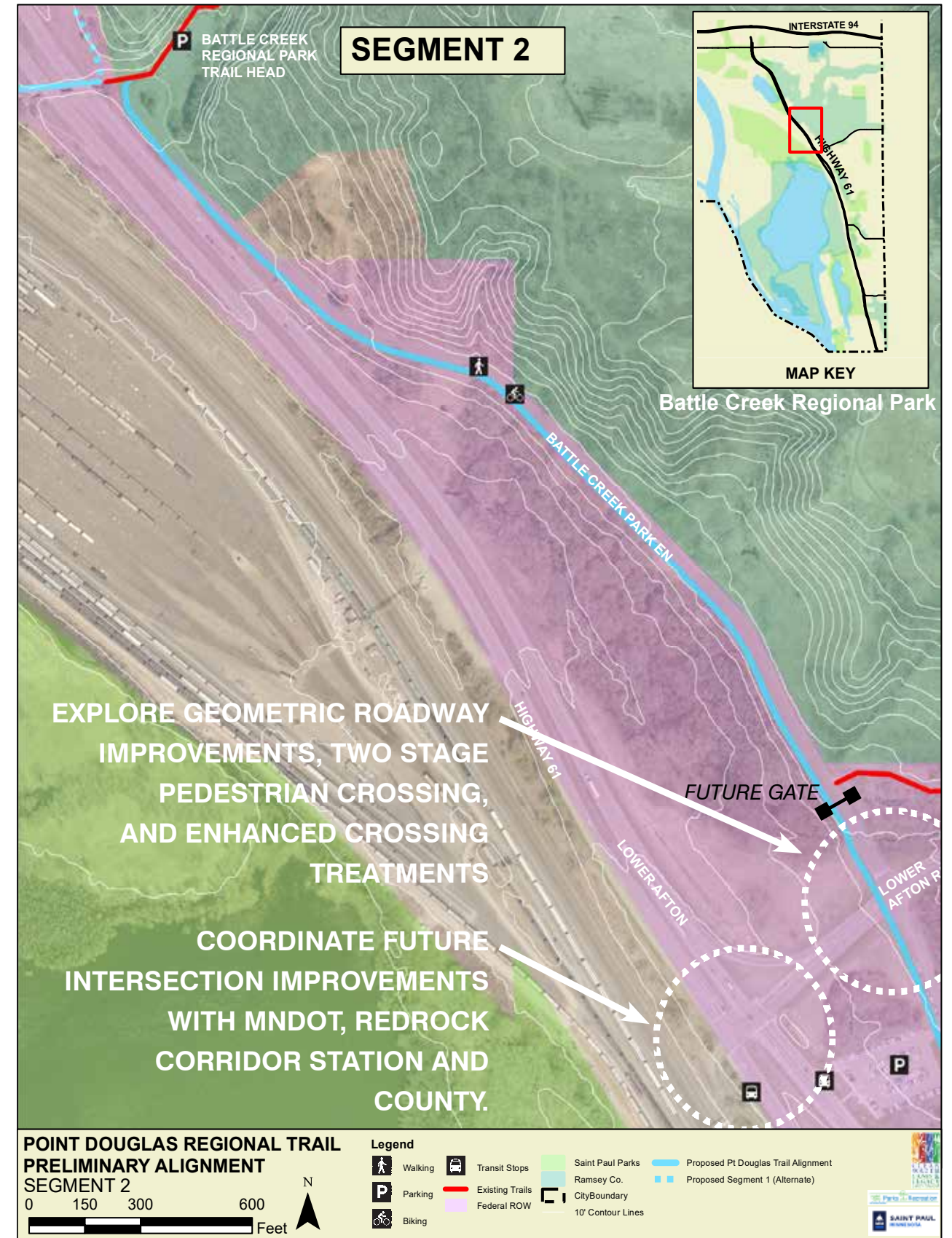
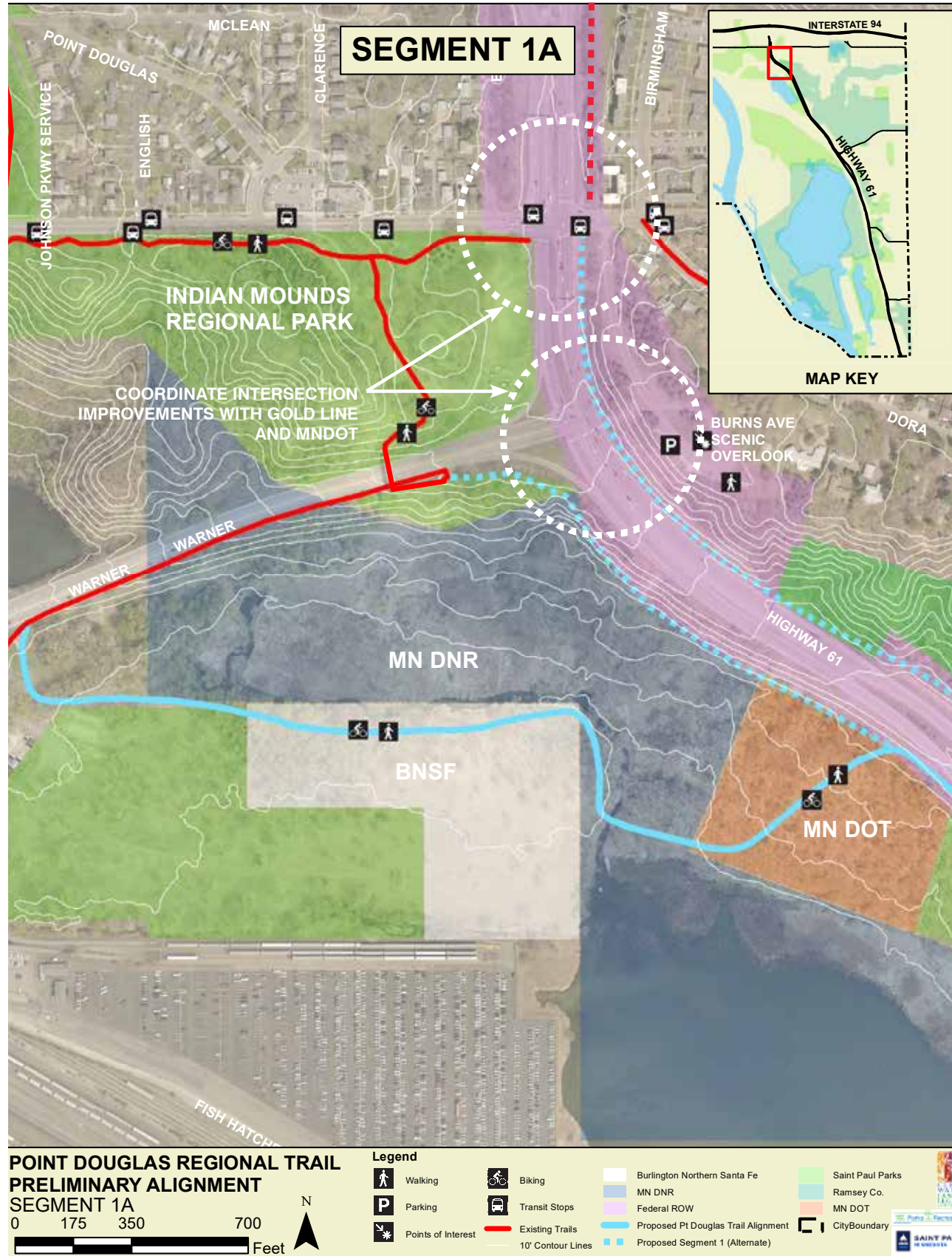


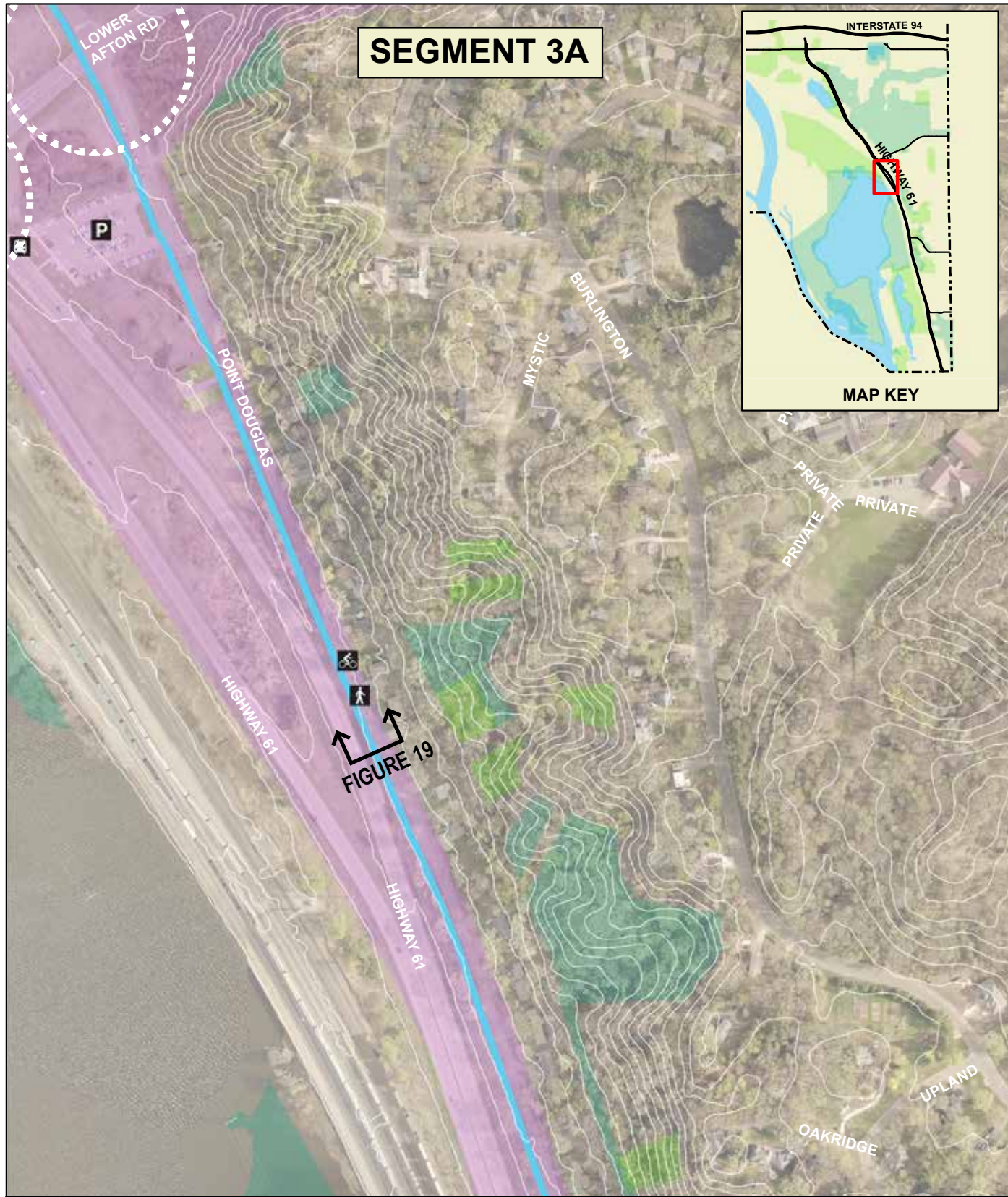
ANSWER CHOICES	RESPONSES	Count
Indigenous	3.53%	3
Asian/Pacific Islander	5.88%	5
Latinx	2.35%	2
African American	5.88%	5
White/Caucasian	80.00%	68
Other (please specify)	2.35%	2
<b>TOTAL</b>		<b>85</b>

The following are recommendations from the community and action items to consider:

- Extend community engagement to reach out to a more diverse group of people and to gain more insight into how people perceive and use the trail.
- Promote trail to increase awareness throughout community and organize a grand opening to celebrate a shared public amenity.
- Increase safety by improving lighting, surfacing and separation from vehicle traffic.
- Increase demand and access by providing amenities such as lighting, benches, signage, shade and drinking fountains.

# MASTER PLAN DRAFT CORRIDOR





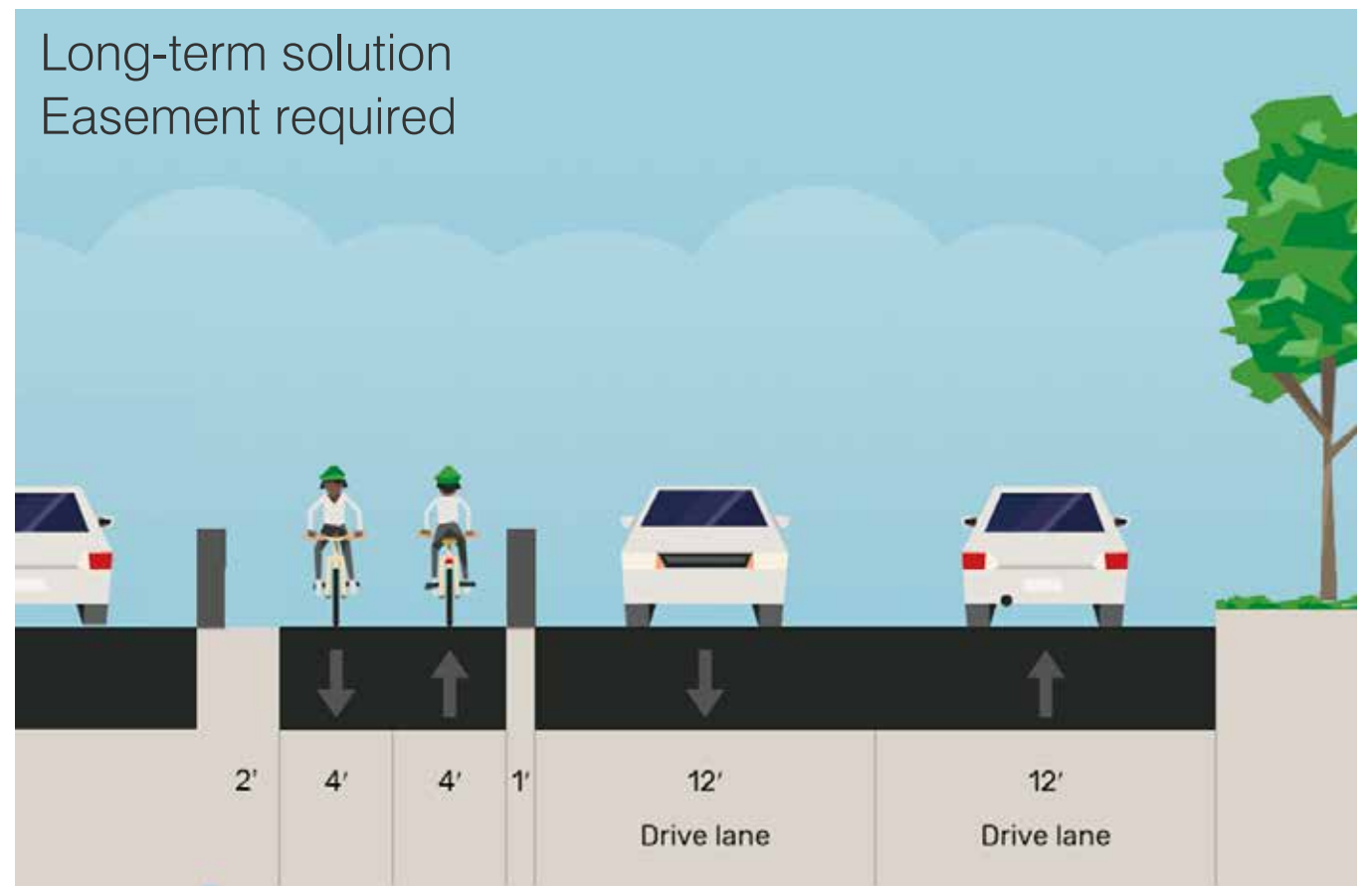
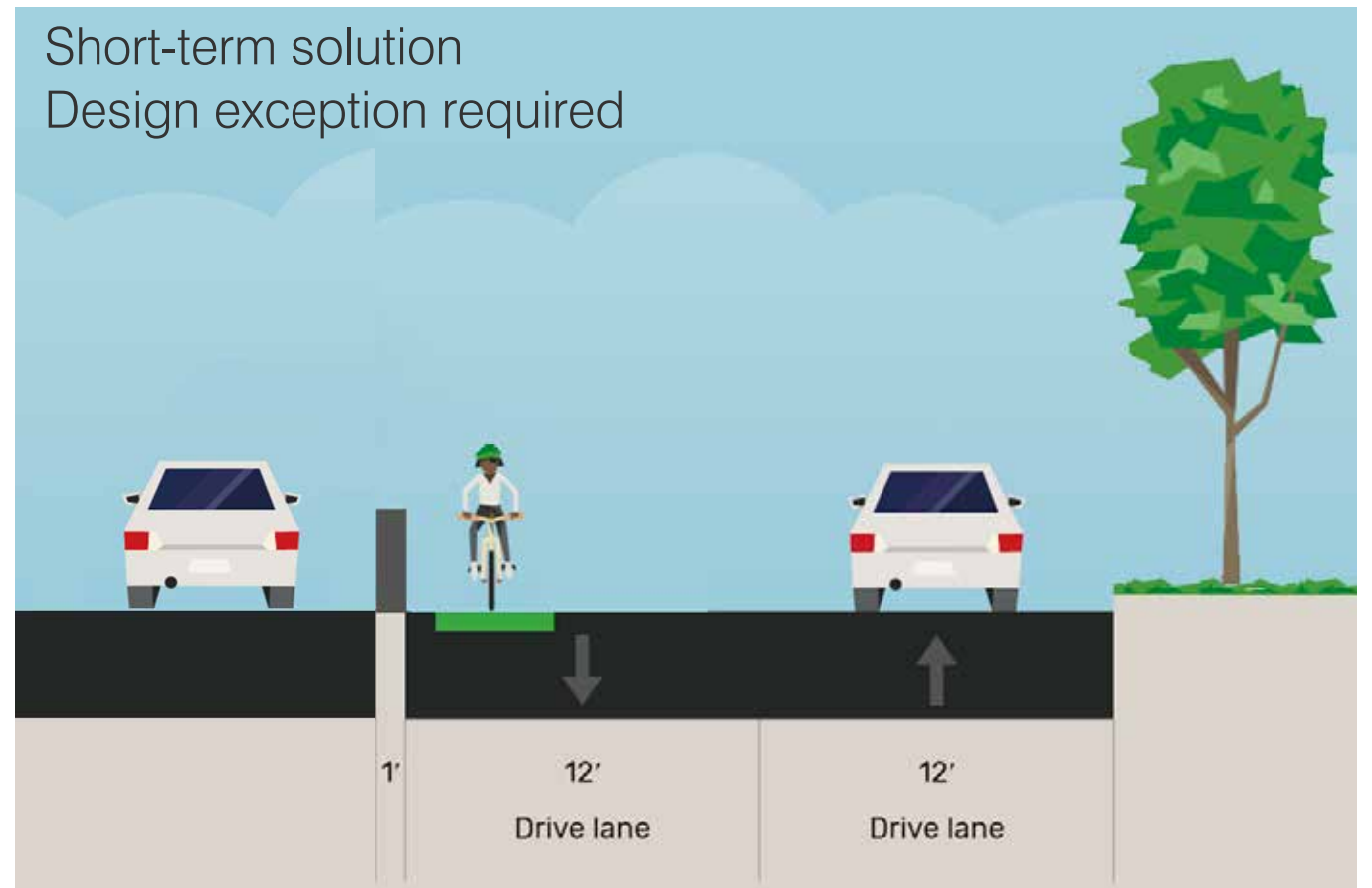
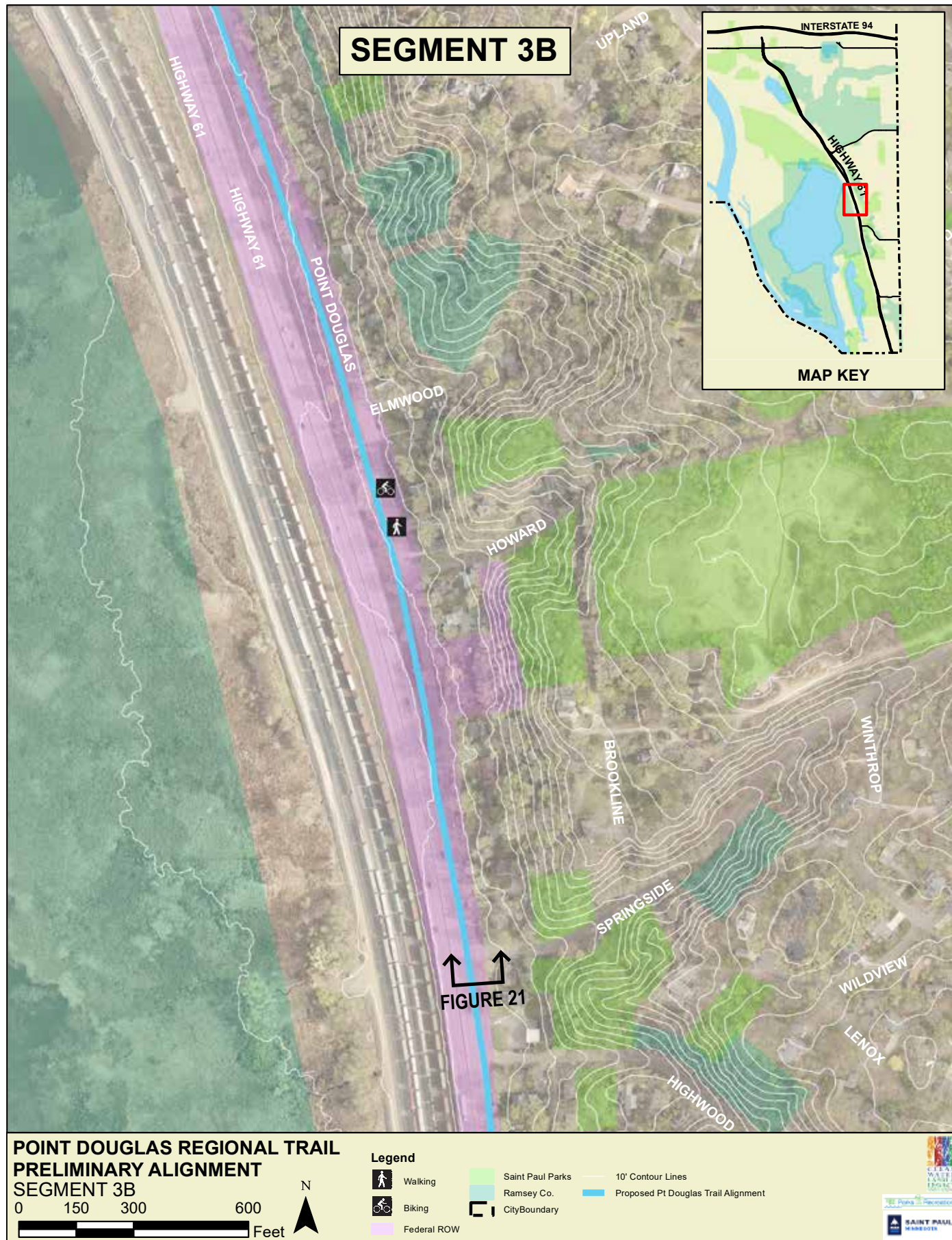
**POINT DOUGLAS REGIONAL TRAIL  
PRELIMINARY ALIGNMENT  
SEGMENT 3A**

0 150 300 600 Feet

**Legend**

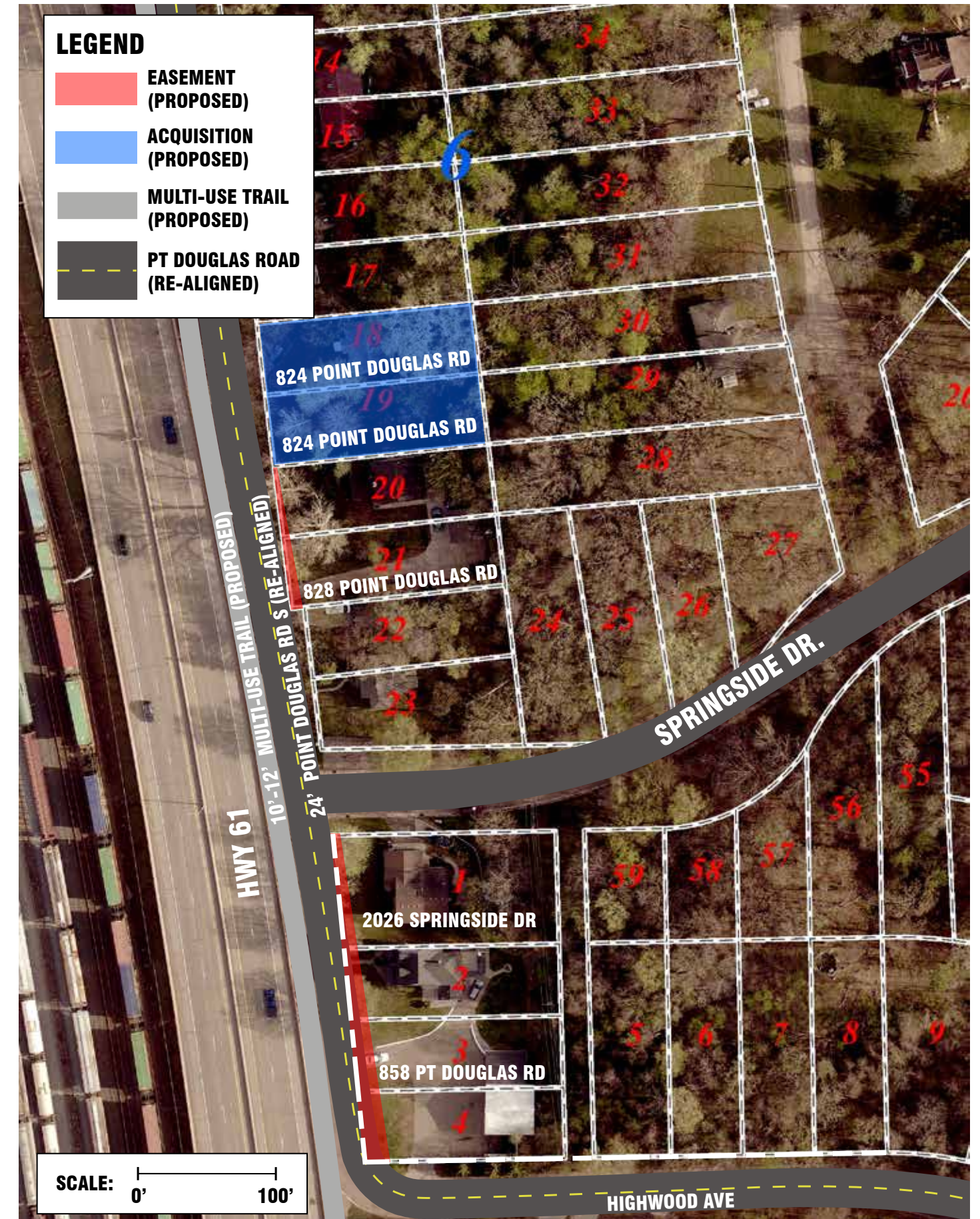
- Walking
- Transit Stops
- Ramsey Co.
- City Boundary
- 10' Contour Lines
- Parking
- Federal ROW
- Saint Paul Parks
- Proposed Pt Douglas Trail Alignment
- Biking

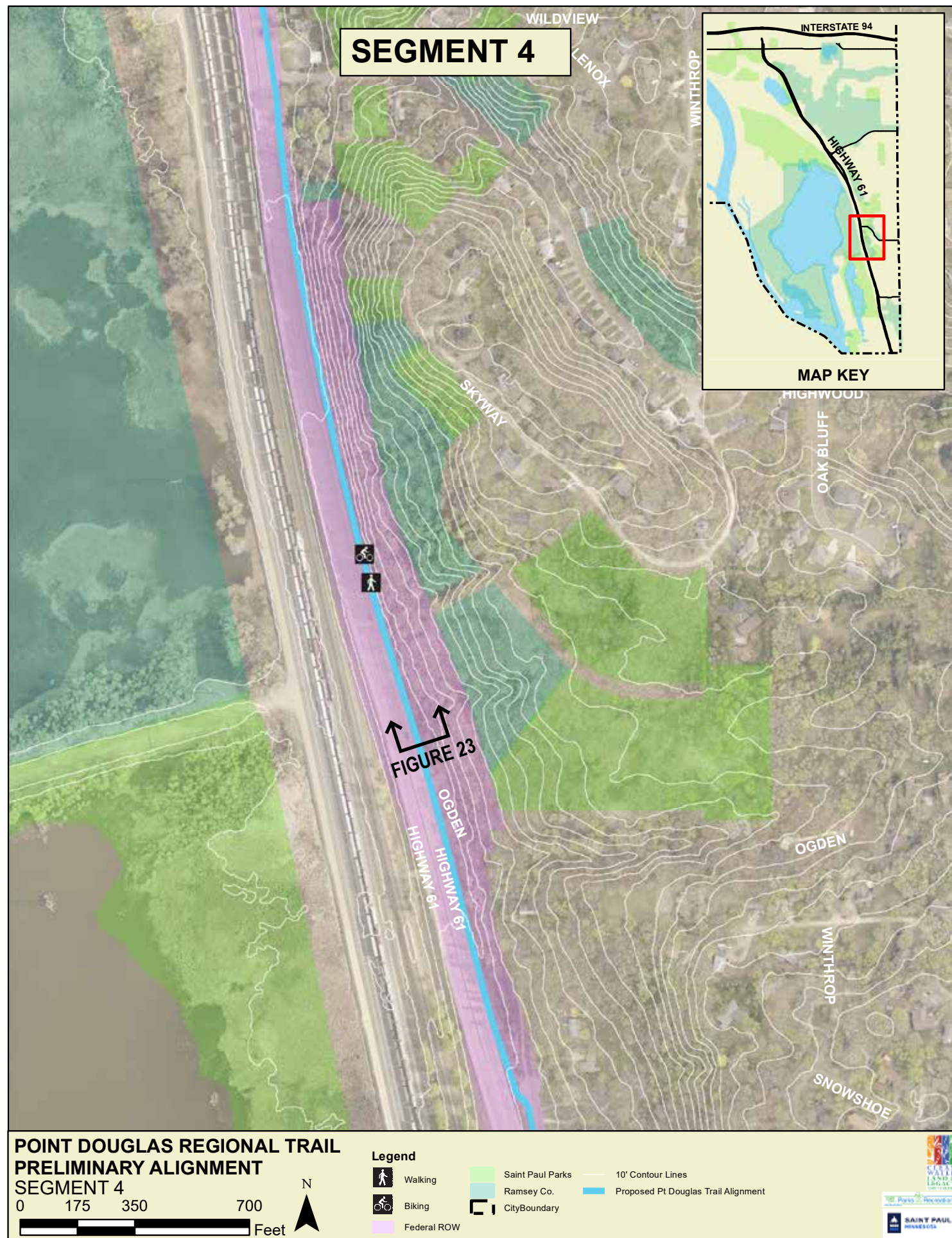






# BOUNDARIES & ACQUISITIONS

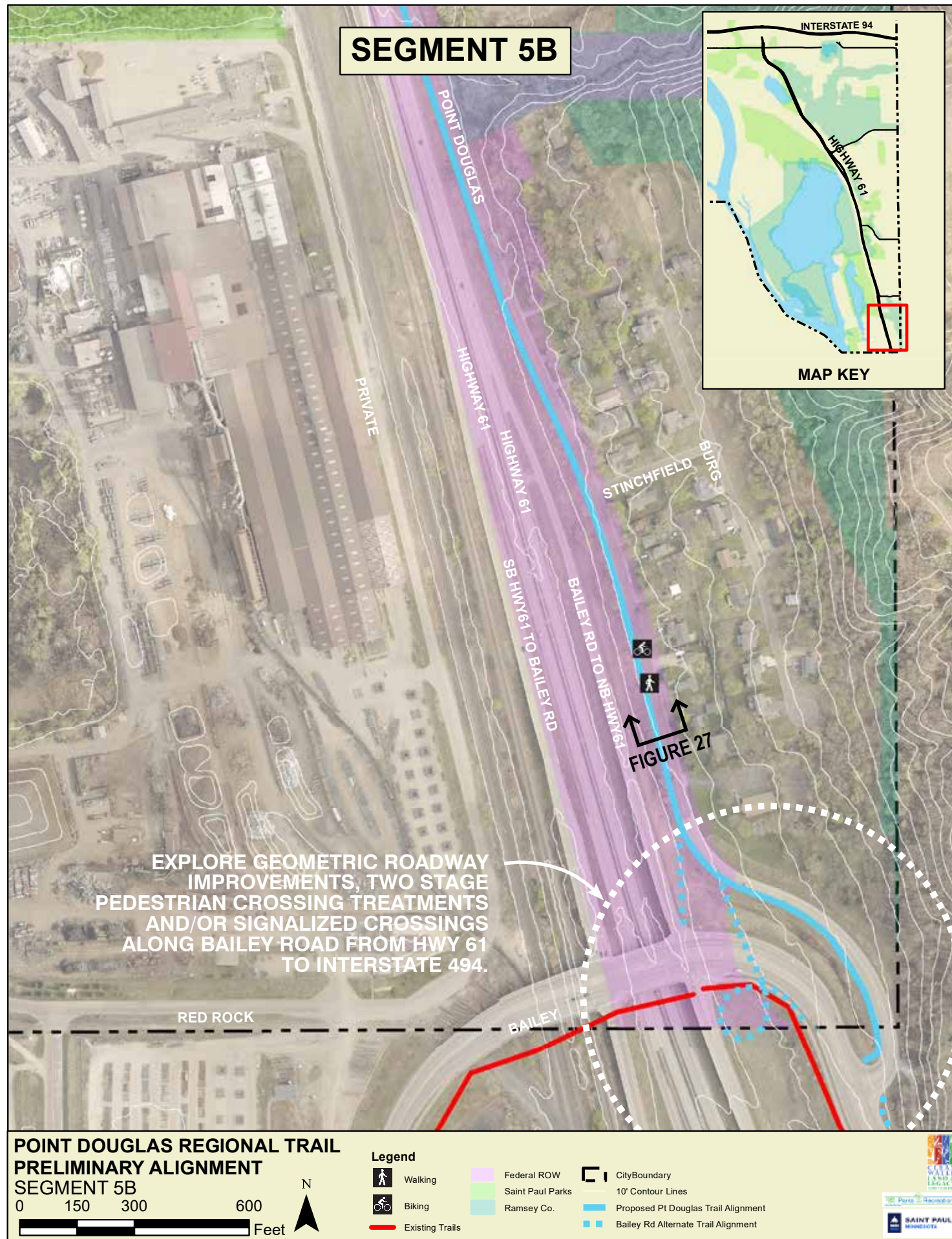




Segment 4 typical section. 12'-0" trail to replace existing 8'-0" trail, new vegetation buffer & pedestrian lights.



Segment 4 looking north. Notice existing 8'-0" trail.

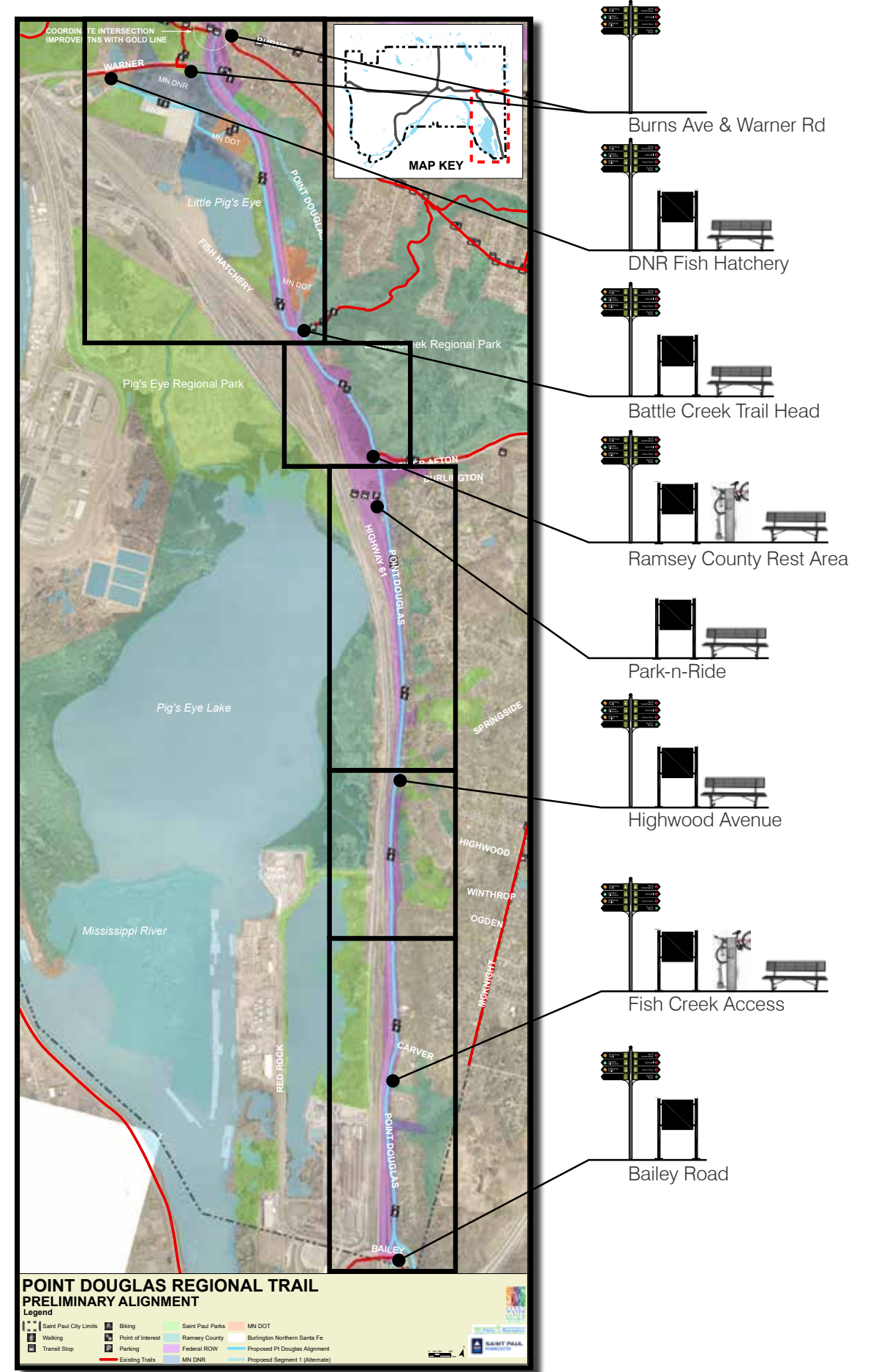
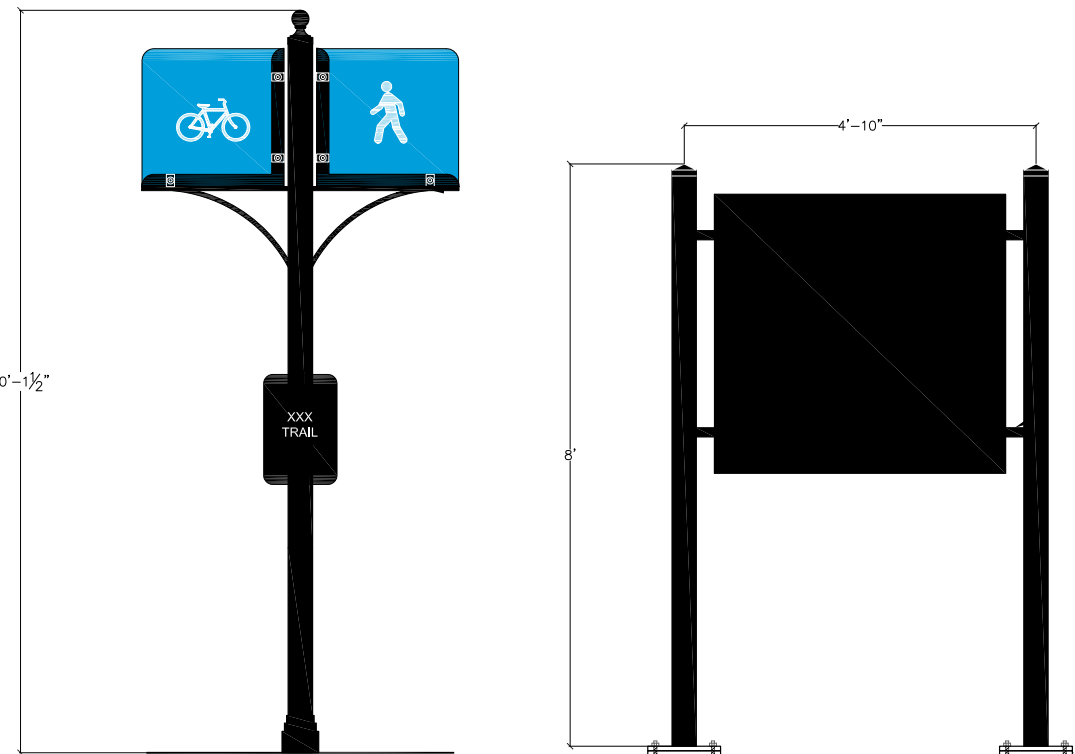
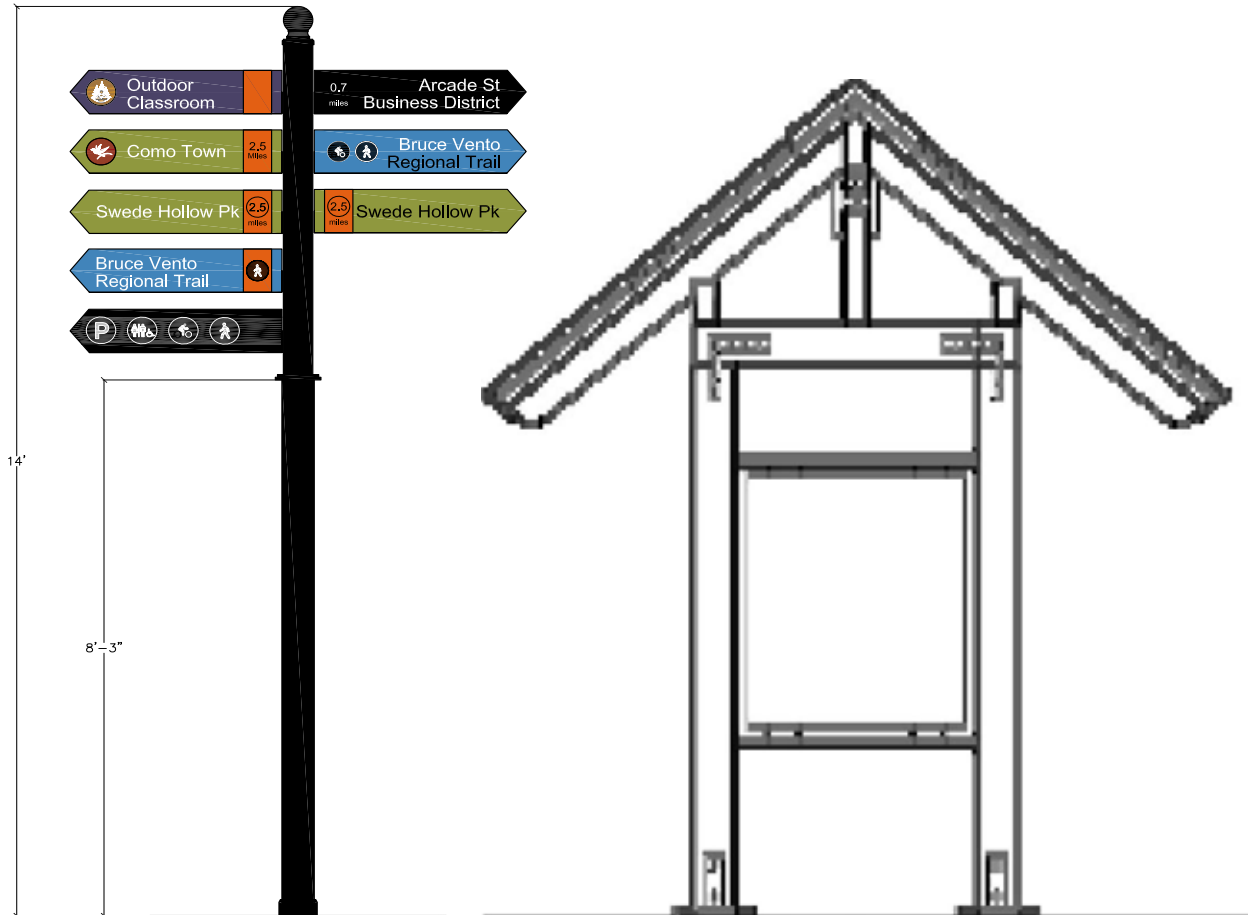


Point Douglas Rd south of Stinchfield Street.



Segment 5B typical section south of Stinchfield St.

# PUBLIC SERVICES



# COST ESTIMATE

SUMMARY	
SEGMENT	COST
SEGMENT 2	\$470,151.70
LOWER AFTON ROAD CROSSING CONCEPT 1 (BASE)	\$120,213.00
SEGMENT 3A	\$1,024,539.28
SEGMENT 3B CONCEPT 1 (BASE)	\$895,312.28
SEGMENT 4	\$578,605.65
SEGMENT 5A	\$549,085.25
SEGMENT 5B	\$1,089,280.75
BAILEY ROAD CONCEPT 1 (BASE)	\$209,351.35
Construction Costs	\$4,936,539.25
20% Contingency	\$987,307.85
20% Non-Construction Cost	\$1,184,769.42
<b>TOTAL PROJECT COST BASE COST</b>	<b>\$7,108,616.52</b>
ALTERNATES	COST
ADD ALTERNATE: LOWER AFTON ROAD CROSSING CONCEPT 2	\$510,272.75
ADD ALTERNATE: SEGMENT 3B CONCEPT 2	\$1,327,555.48
DEDUCT ALTERNATE: BAILEY ROAD CONCEPT 2	-\$244,265.18

Cost estimate by segment. Costs based upon 2021 pricing and does not account for inflation.

**Next Steps:**

October	Transportation Committee (Approved on Oct 4th)
October	Parks & Rec Commission (Scheduled for Oct 14th)
November	30-Day Public Review
November	St Paul City Council Approval
December	Met Council Approval
Spring	Submit Project for 2022 Regional Solicitation

# Regional Trail Master Plan

# **POINT DOUGLAS**

**Project Manager**

Brett Hussong, Landscape Architect  
brett.hussong@ci.stpaul.mn.us  
651-266-6420

**Project Website**

[www.stpaul.gov/PointDouglasTrail](http://www.stpaul.gov/PointDouglasTrail)

