

PRELIMINARY TRAIL ALIGNMENTS

POINT DOUGLAS REGIONAL TRAIL



SUBMITTED BY THE CITY OF SAINT PAUL
DEPARTMENT OF PARKS & RECREATION
DECEMBER 2020



SAINT PAUL
MINNESOTA

AGENDA

1. INTRODUCTION: SECOND OF TWO ONLINE PRESENTATIONS
2. PROJECT PURPOSE & OVERVIEW
3. PREFERRED ALIGNMENTS
4. NEXT STEPS & SCHEDULE



PROJECT PURPOSE

- POINT DOUGLAS WAS IDENTIFIED AS REGIONAL TRAIL SEARCH CORRIDOR BY METROPOLITAN COUNCIL
- TO PLAN A CONTINUOUS PROTECTED, OFF-STREET TRAIL
- IMPROVE SAFETY, ACCESSIBILITY, & CONNECTIVITY
- TO ENGAGE THE COMMUNITY

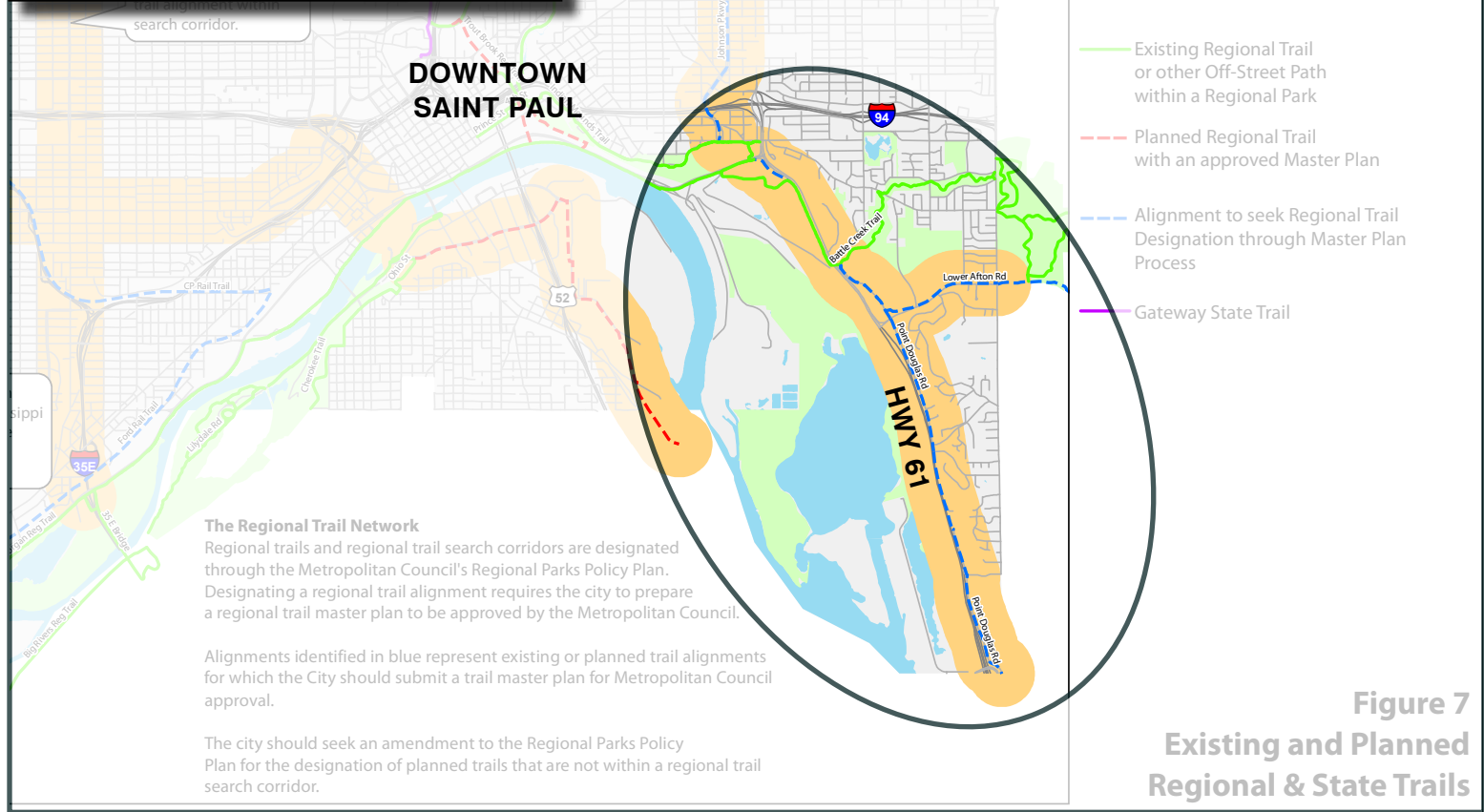
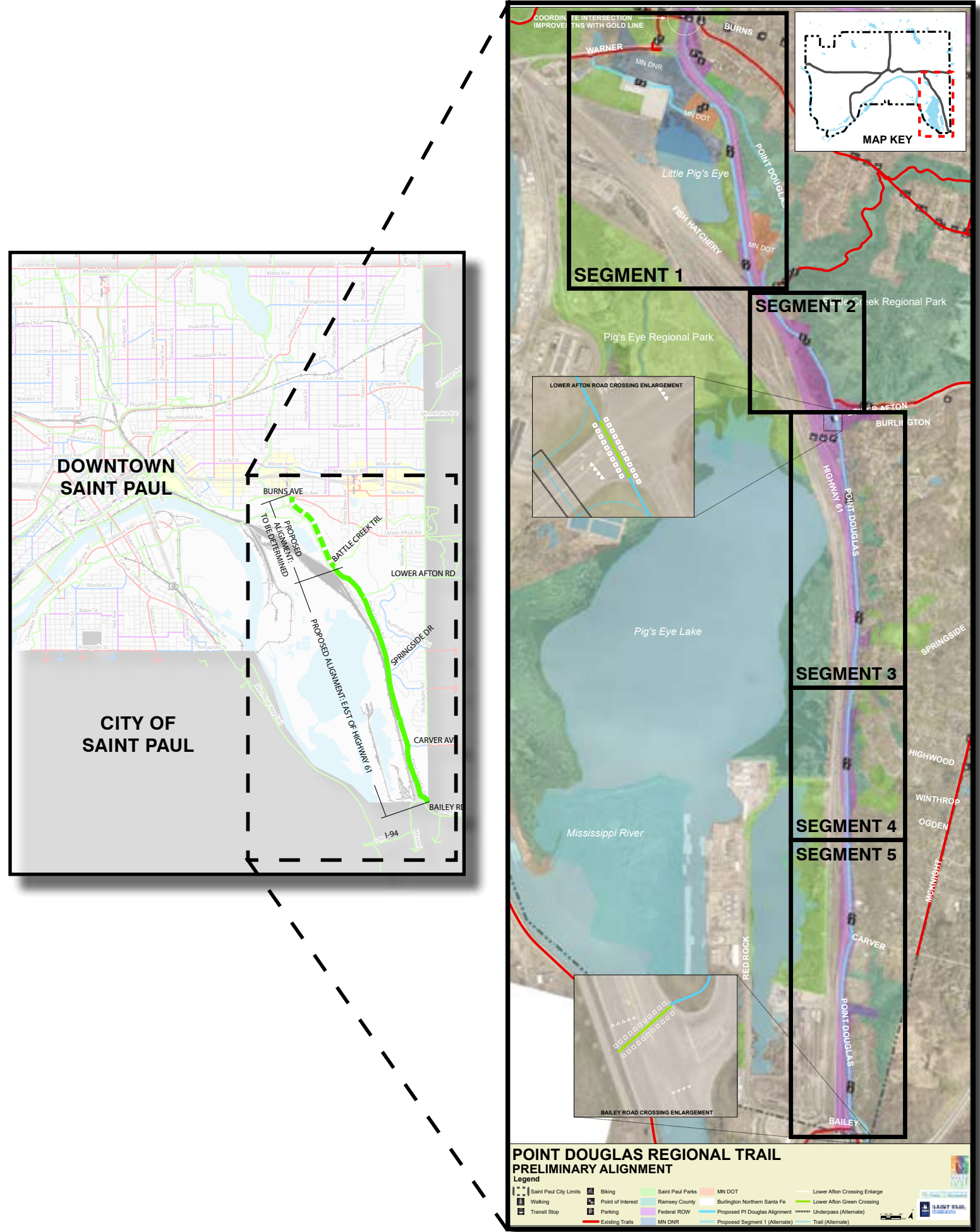
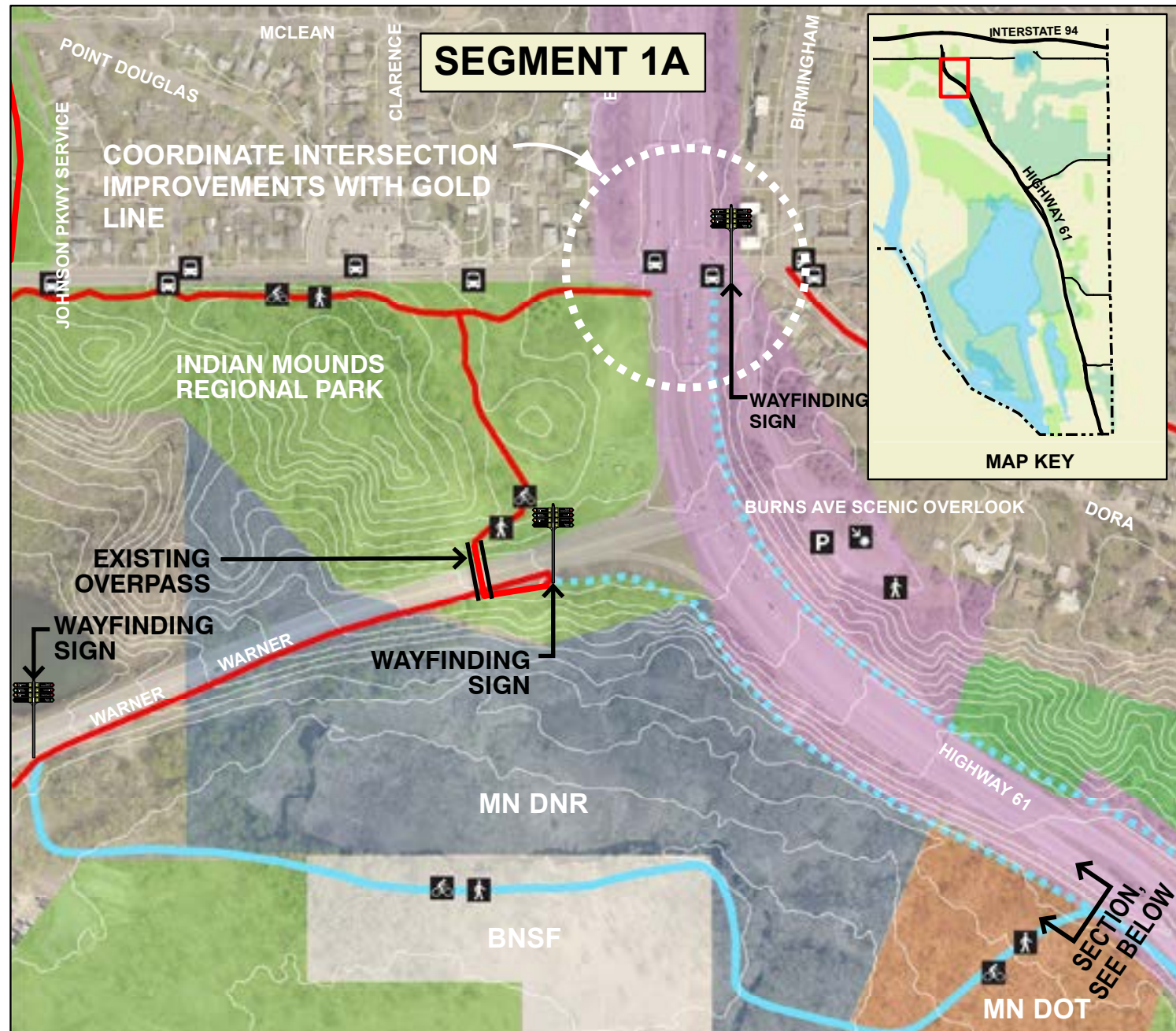


Figure 7
Existing and Planned
Regional & State Trails

PROJECT LOCATION



PRELIMINARY ALIGNMENTS



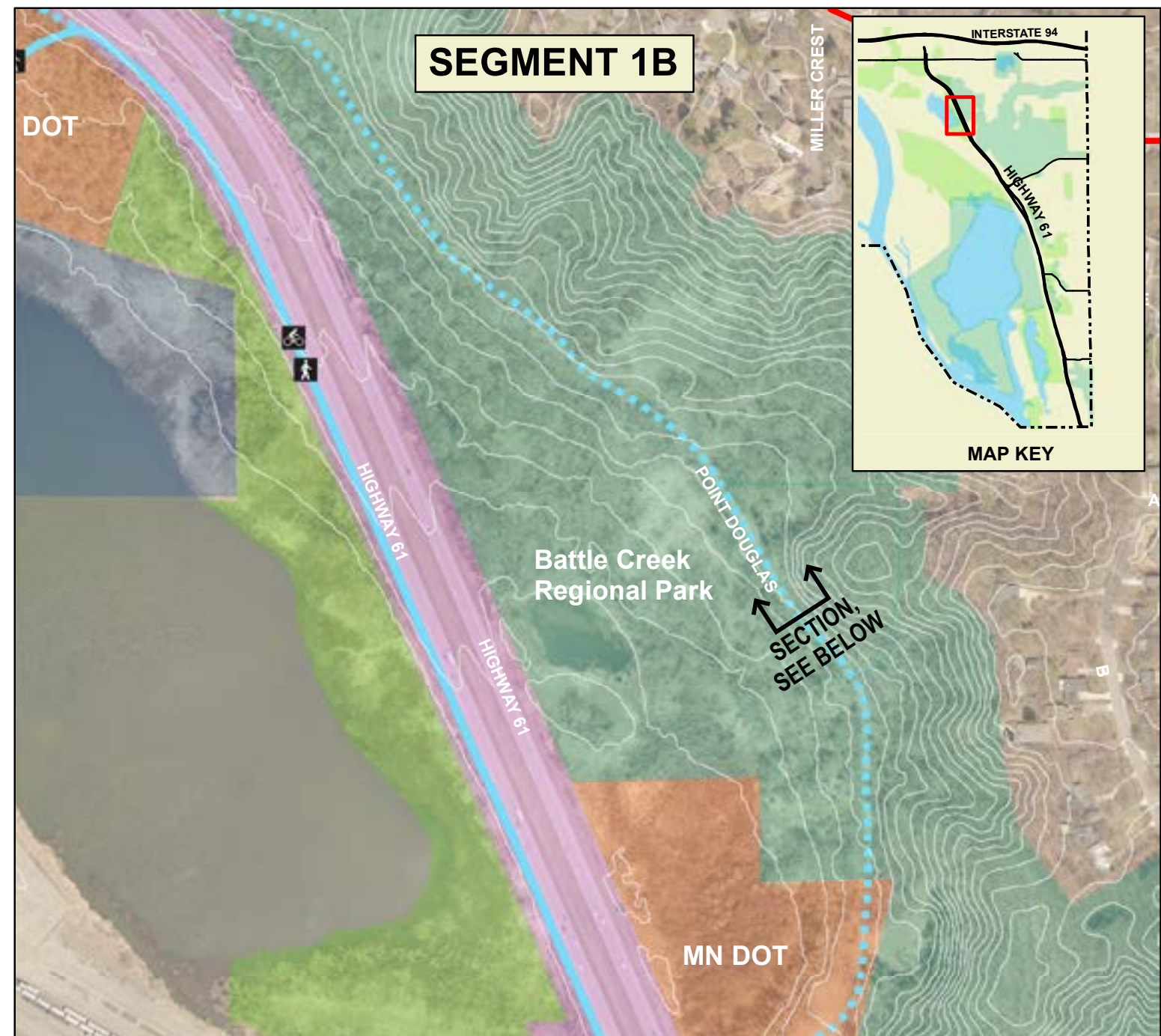
Segment 1A section on west side of Hwy 61.



POINT DOUGLAS REGIONAL TRAIL PRELIMINARY ALIGNMENT SEGMENT 1A

0 175 350 700 Feet

Walking	Biking	Burlington Northern Santa Fe	Saint Paul Parks
Parking	Transit Stops	MN DNR	Ramsey Co.
Points of Interest	Existing Trails	Federal ROW	MN DOT
	Proposed Pt Douglas Trail Alignment	City Boundary	
	Proposed Segment 1 (Alternate)		



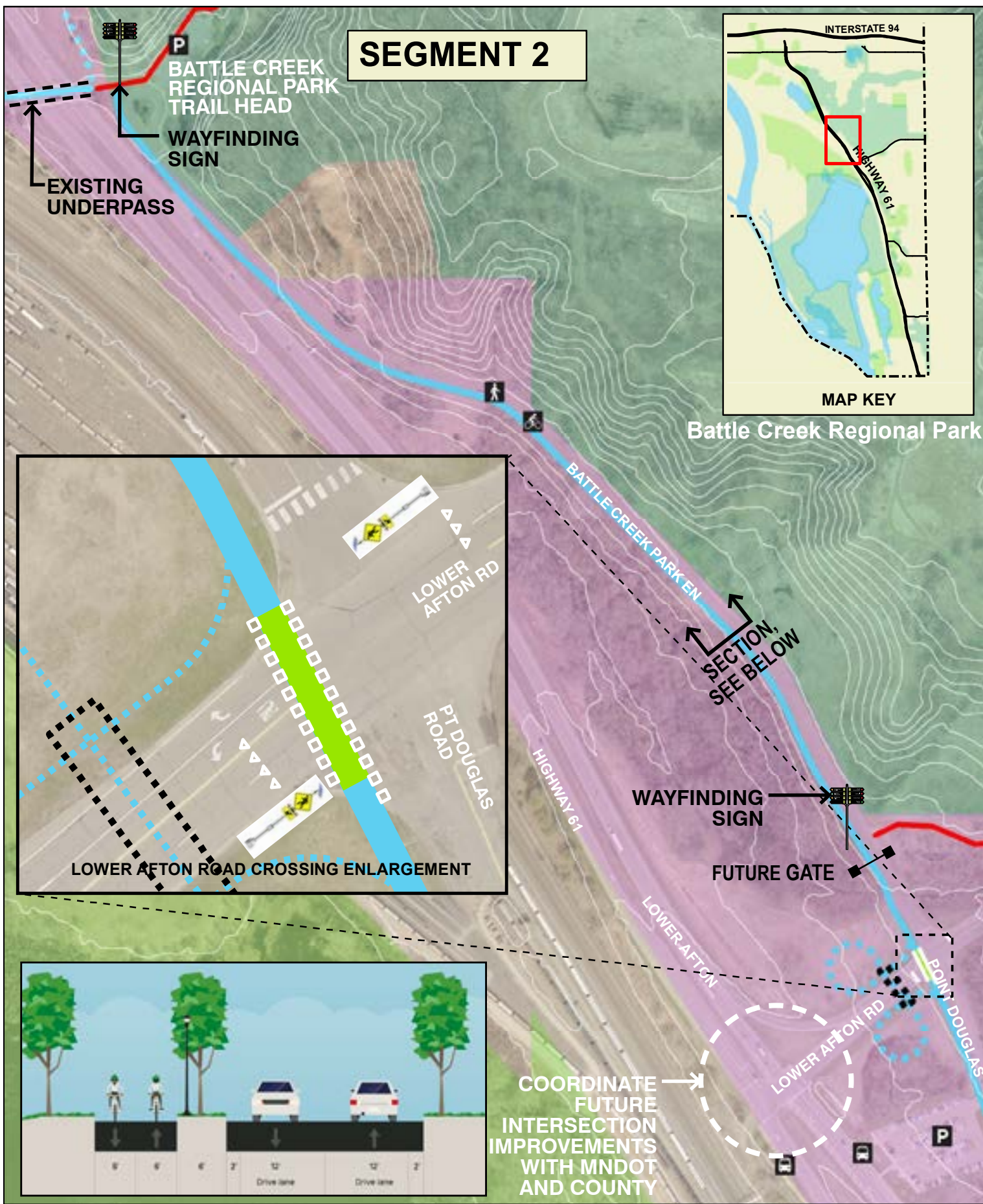
Segment 1B section on east side of Hwy 61.



POINT DOUGLAS REGIONAL TRAIL PRELIMINARY ALIGNMENT SEGMENT 1B

0 175 350 700 Feet

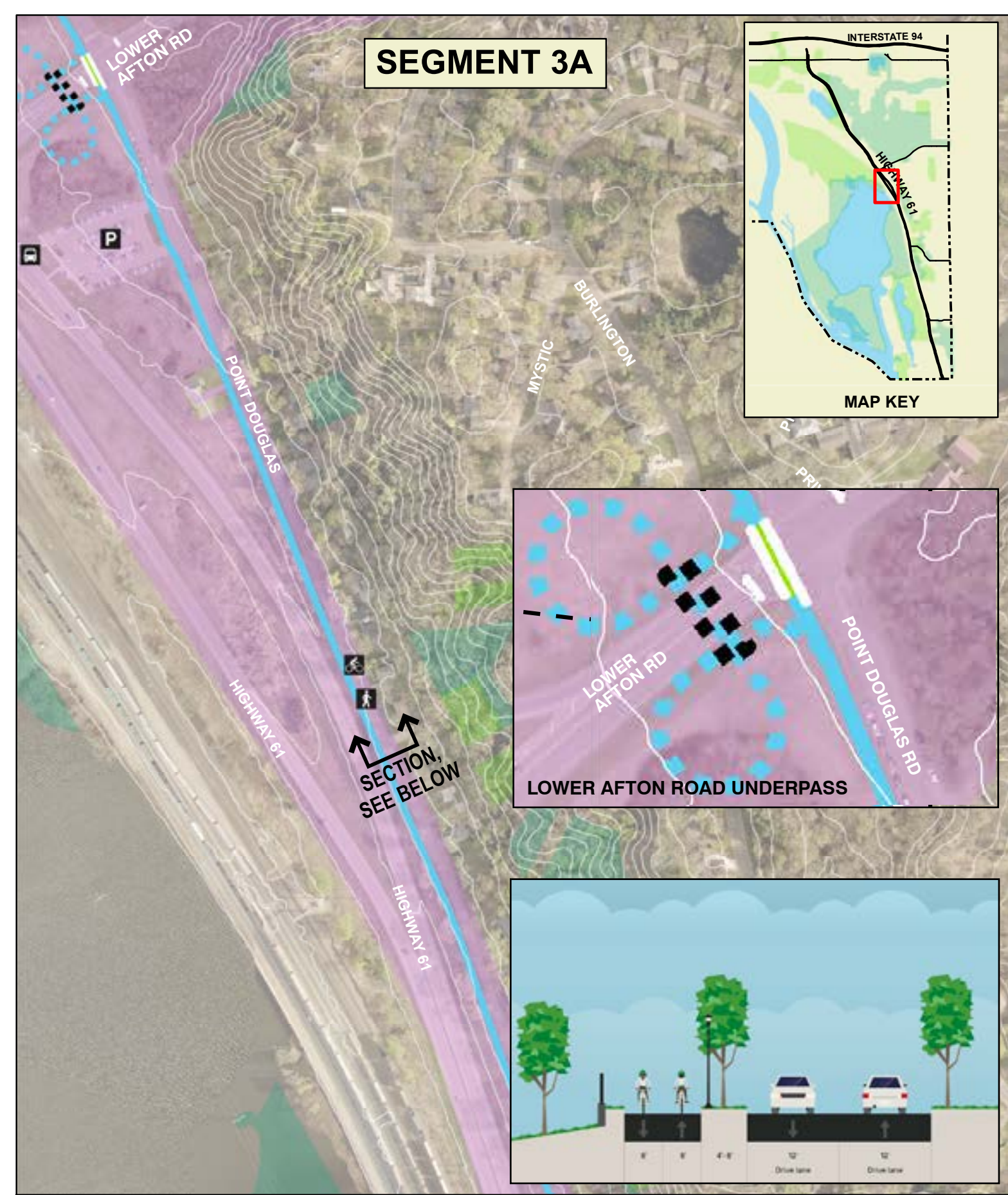
Walking	Biking	MN DOT	Saint Paul Parks
Parking	Existing Trails	Federal ROW	Ramsey Co.
Points of Interest	Proposed Pt Douglas Trail Alignment	MN DNR	City Boundary
	Proposed Segment 1 (Alternate)		



POINT DOUGLAS REGIONAL TRAIL PRELIMINARY ALIGNMENT SEGMENT 2

0 150 300 600 Feet

Legend	Walking	Transit Stops	Ramsey Co. City Boundary	Lower Afton Green Crossing
Parking	Existing Trails	Federal ROW	10' Contour Lines	Proposed Pt Douglas Trail Alignr
Biking	Saint Paul Parks	Lower Afton Underpass (Alternate)	Lower Afton Underpass Trail (Alternate)	

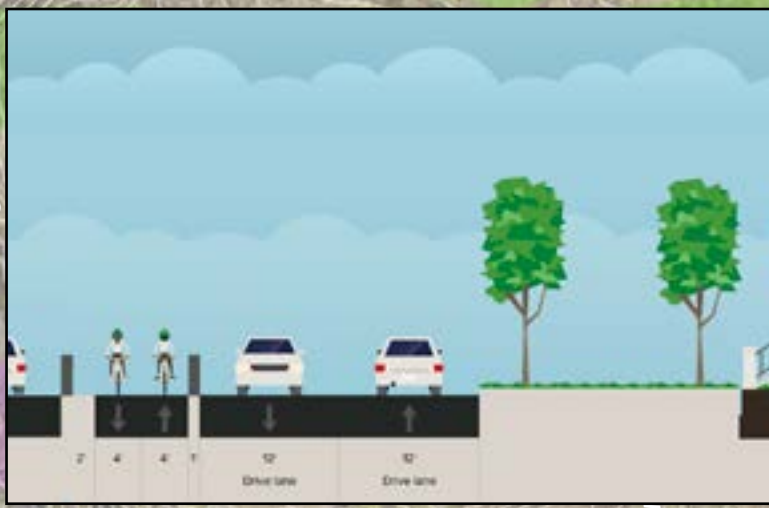
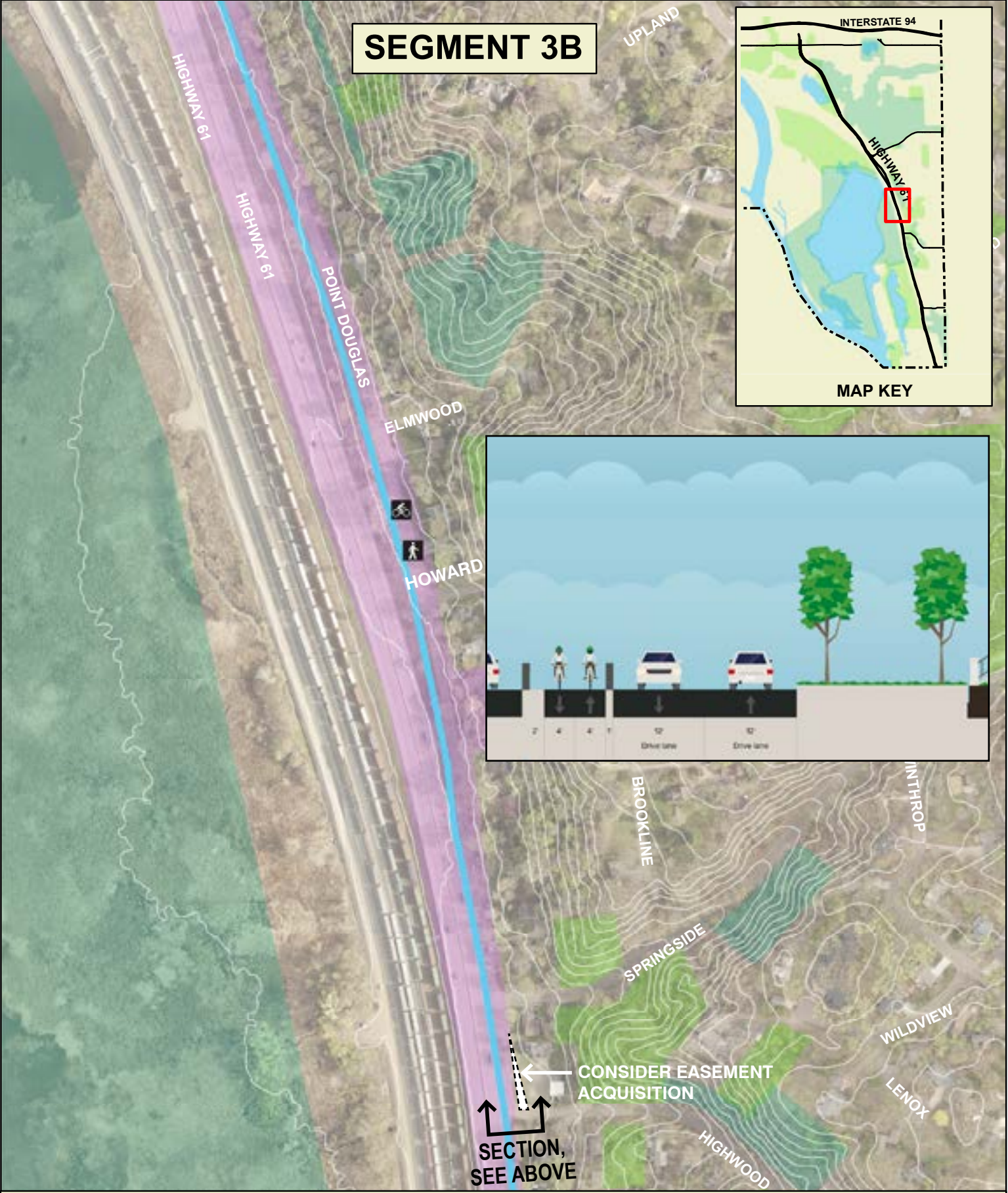


POINT DOUGLAS REGIONAL TRAIL PRELIMINARY ALIGNMENT SEGMENT 3A

0 150 300 600 Feet

Legend	Walking	Transit Stops	City Boundary	Lower Afton Green Crossing
Parking	Federal ROW	Saint Paul Parks	10' Contour Lines	Proposed Pt Douglas Trail Alignr
Biking	Ramsey Co.	Lower Afton Underpass (Alternate)	Lower Afton Underpass Trail (Alternate)	

SEGMENT 3B



**POINT DOUGLAS REGIONAL TRAIL
PRELIMINARY ALIGNMENT
SEGMENT 3B**

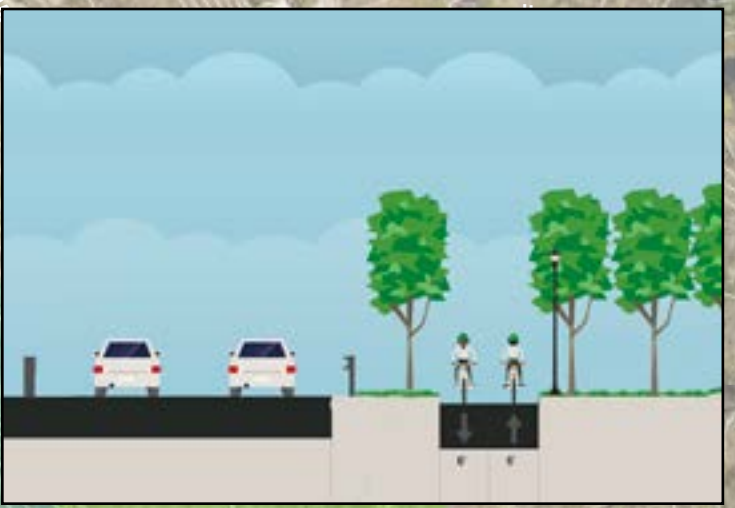
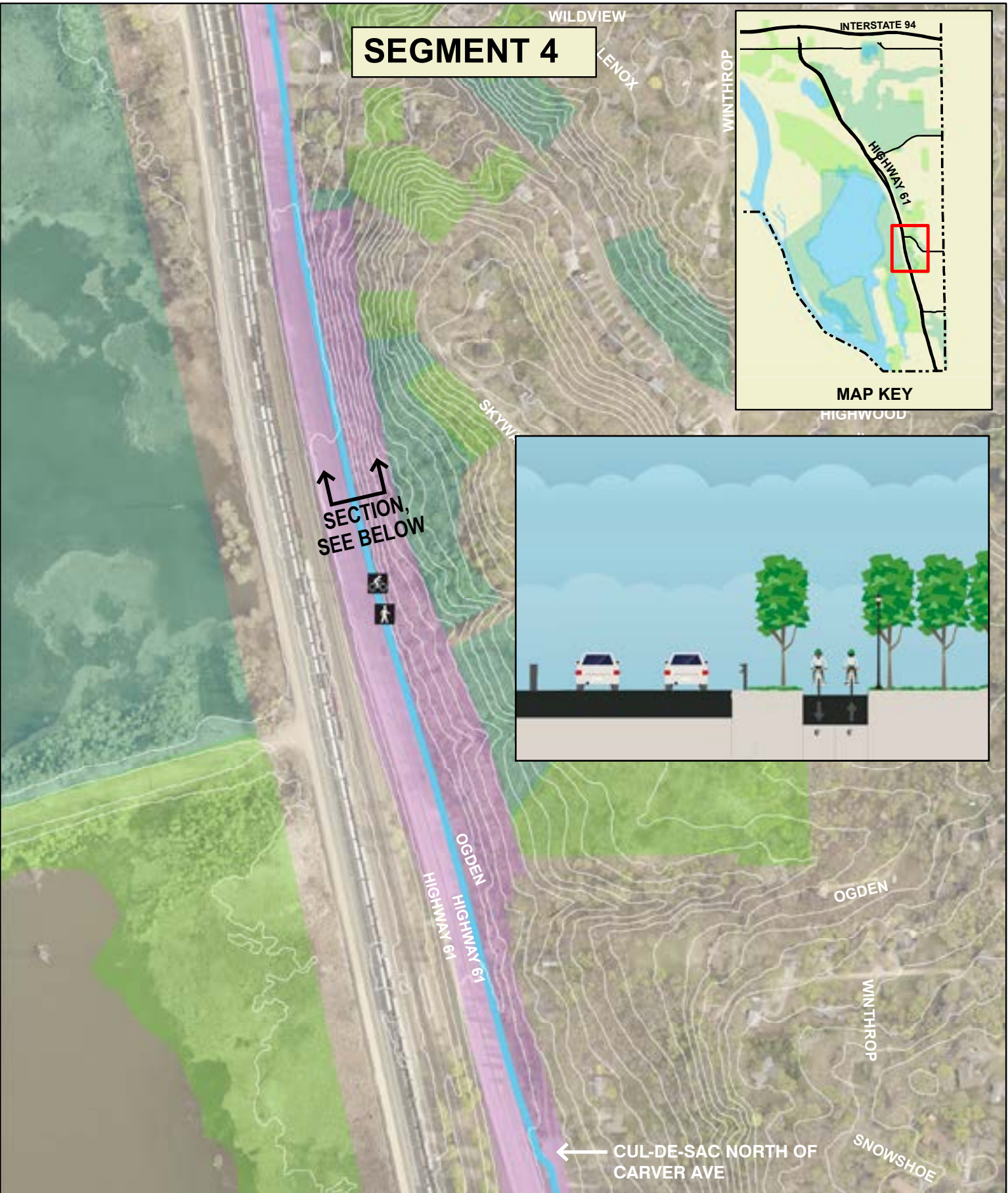
0 150 300 600 Feet

Legend

- Walking
- Biking
- Federal ROW
- Saint Paul Parks
- Ramsey Co.
- City Boundary
- 10' Contour Lines
- Proposed Pt Douglas Trail Alignment

SAINT PAUL REGIONAL TRAIL

SEGMENT 4



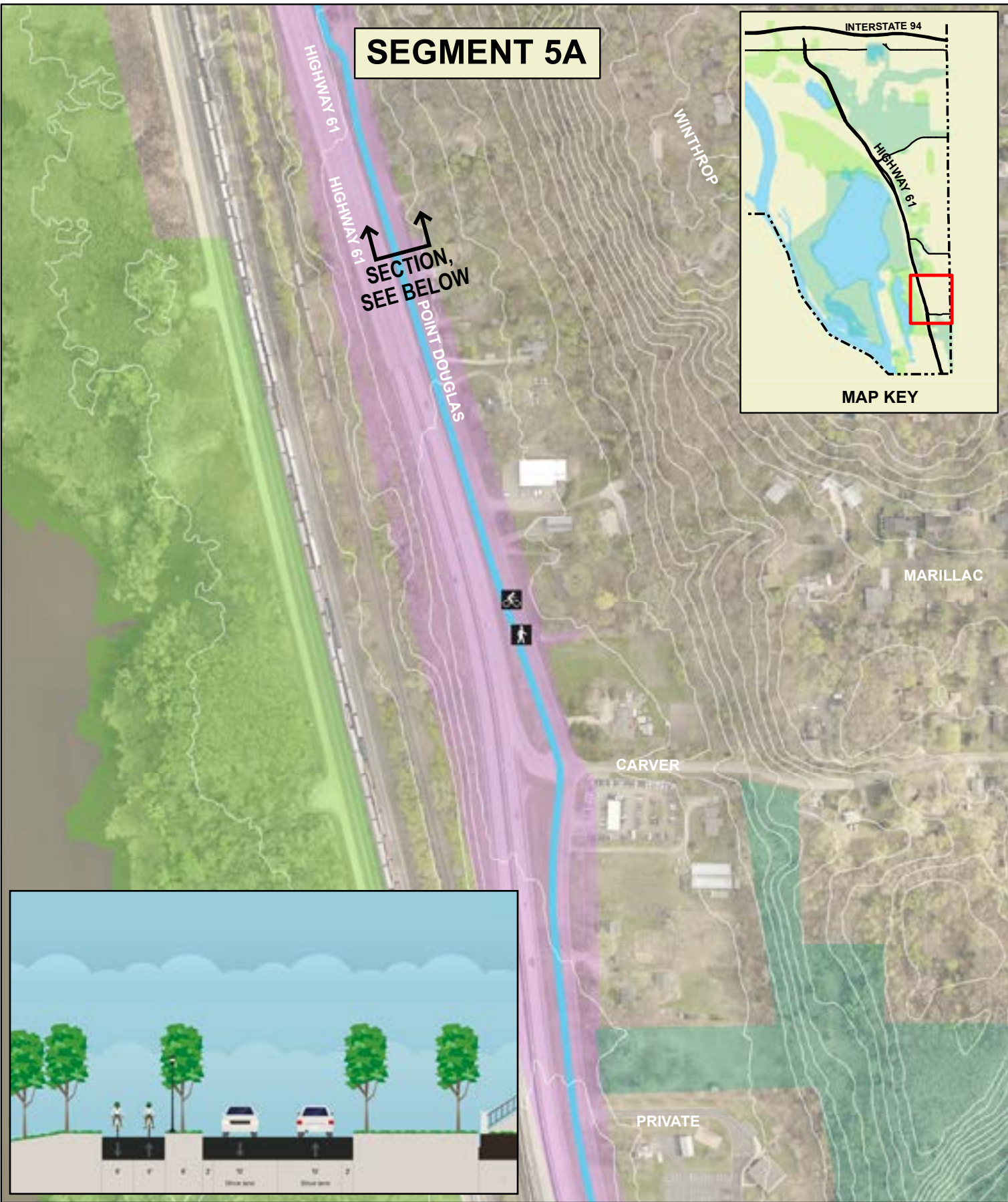
**POINT DOUGLAS REGIONAL TRAIL
PRELIMINARY ALIGNMENT
SEGMENT 4**

0 175 350 700 Feet

Legend

- Walking
- Biking
- Federal ROW
- Saint Paul Parks
- Ramsey Co.
- City Boundary
- 10' Contour Lines
- Proposed Pt Douglas Trail Alignment

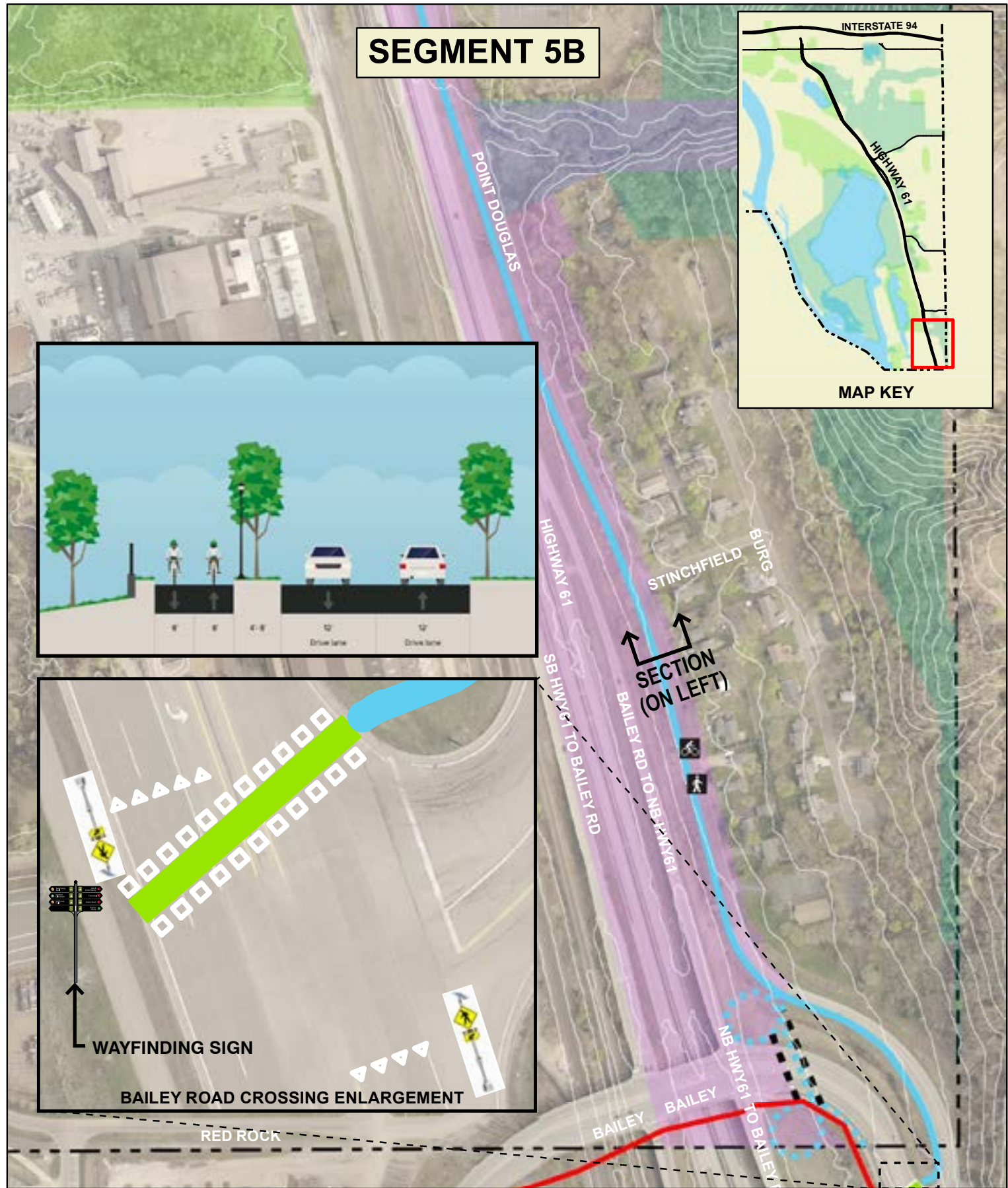
SAINT PAUL REGIONAL TRAIL



POINT DOUGLAS REGIONAL TRAIL PRELIMINARY ALIGNMENT SEGMENT 5A

0 150 300 600 Feet

	Walking		Saint Paul Parks		10' Contour Lines
	Biking		Ramsay Co.		Proposed Pt Douglas Trail Alignment
	Federal ROW		City Boundary		



POINT DOUGLAS REGIONAL TRAIL PRELIMINARY ALIGNMENT SEGMENT 5B

0 150 300 600 Feet

	Walking		Federal ROW		10' Contour Lines		Proposed Pt Douglas Trail Alignment
	Biking		Saint Paul Parks		Underpass (Alternate)		Trail (Alternate)
	Existing Trails		Ramsay Co.		Bailey Rd Green Crossing		
			City Boundary				

NEXT STEPS

- FOCUS GROUPS & POP-UP MEETINGS
- DEVELOP TRAIL ALIGNMENT(S)
- TENTATIVE SCHEDULE (*Italics = Public Review Periods*)

Mar 2020	Survey
Oct	Release Opportunity and Constraints Presentation - Virtual
<i>Nov</i>	<i>Public Review Period</i>
<i>Nov</i>	<i>Public Review Period</i>
<i>Nov</i>	<i>Transportation Committee Review</i>
Dec	Release Preliminary Trail Alignment Presentation – Virtual
<i>Dec</i>	<i>30-Day Public Review Period</i>
Jan 2021	Release Preferred Trail Alignment Presentation - Virtual
Jan	30-Day Public Review Period
<i>Feb</i>	<i>Parks and Rec Commission & Transportation Committee Approval</i>
Feb	Final Master Plan Document
<i>Mar</i>	<i>30-Day Public Review Period</i>
April	St Paul City Council Approval
May	Met Council Approval

Project Manager: Brett Hussong

Phone: 651-266-6420

Email: brett.hussong@ci.stpaul.mn.us

Project Website: www.stpaul.gov/PointDouglasTrail



**SAINT PAUL
MINNESOTA**

