

# OPPORTUNITY & CONSTRAINTS POINT DOUGLAS REGIONAL TRAIL

SUBMITTED BY THE CITY OF SAINT PAUL  
DEPARTMENT OF PARKS & RECREATION  
OCTOBER 2020



# **AGENDA**

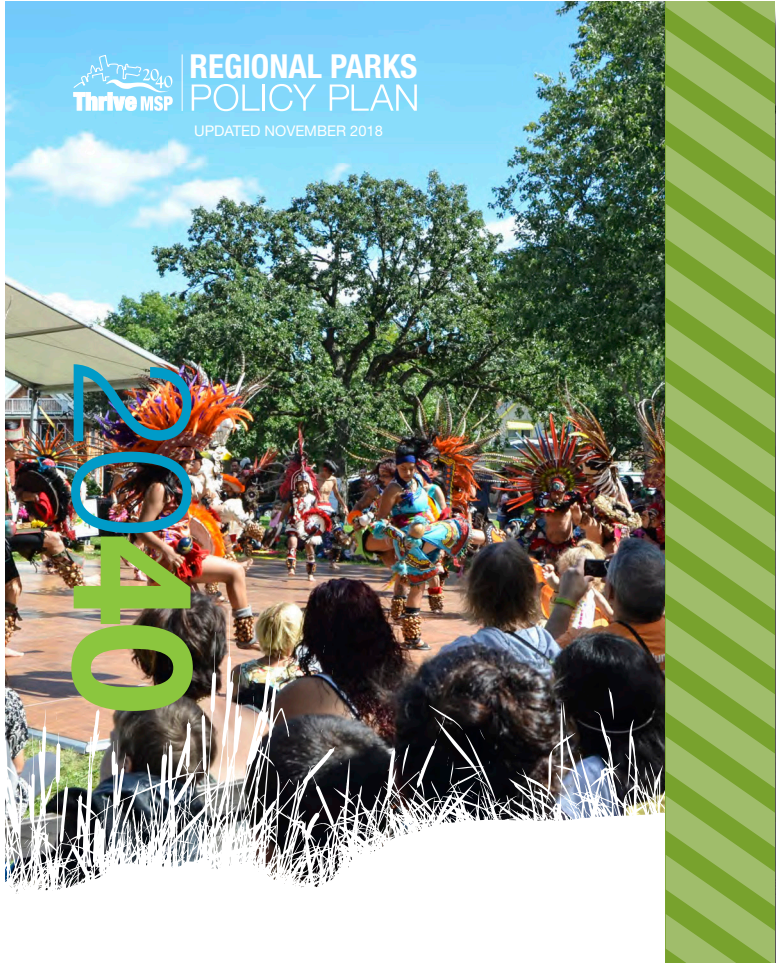
- 1. INTRODUCTION**
- 2. PROJECT OVERVIEW**
- 3. OPPORTUNITIES AND CONSTRAINTS**
- 4. INTERACTIVE MAP**
- 5. NEXT STEPS**

## **1. INTRODUCTION**

- 1. FIRST OF TWO ONLINE PRESENTATIONS: 1) Analysis, 2) Trail Alignment**
- 2. RESTARTING POINT DOUGLAS REGIONAL TRAIL MASTER PLAN COMMUNITY ENGAGEMENT PROCESS WHICH WAS POSTPONED IN MARCH 2020.**
- 3. COMMUNITY ENGAGEMENT WILL ADHERE TO CURRENT PUBLIC HEALTH GUIDELINES:**
  - FUTURE OPEN HOUSE**
  - POP-UP MEETINGS**
  - INTERACTIVE MAPS**
  - VIRTUAL PRESENTATIONS**
- 4. DESIGN ADVISORY TEAM WILL MEET SIMULTANEOUSLY;**
  - GOVERNMENT & MUNICIPAL STAKEHOLDERS**
  - ADVOCACY GROUPS**
  - LOCAL RESIDENTS**
  - WARD & DISTRICT COUNCIL**

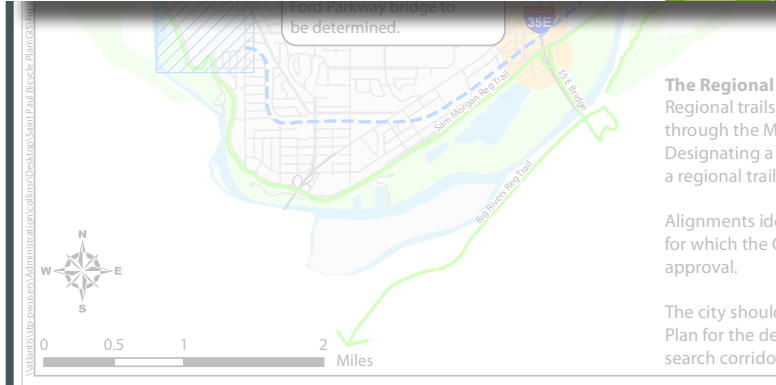
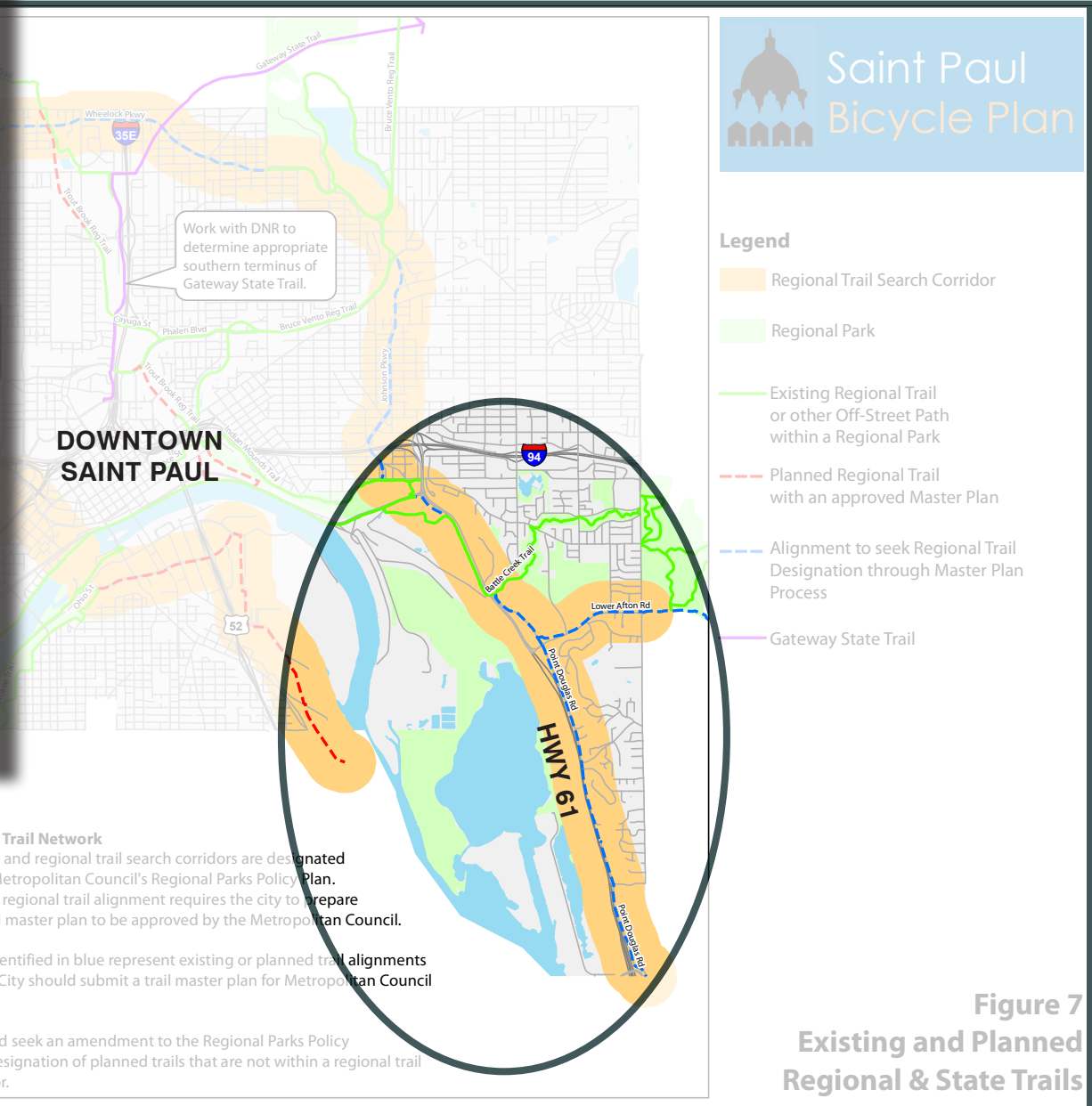


# 2. PROJECT OVERVIEW




**REGIONAL PARKS POLICY PLAN**  
 UPDATED NOVEMBER 2018

N  
 O  
 O  
 N



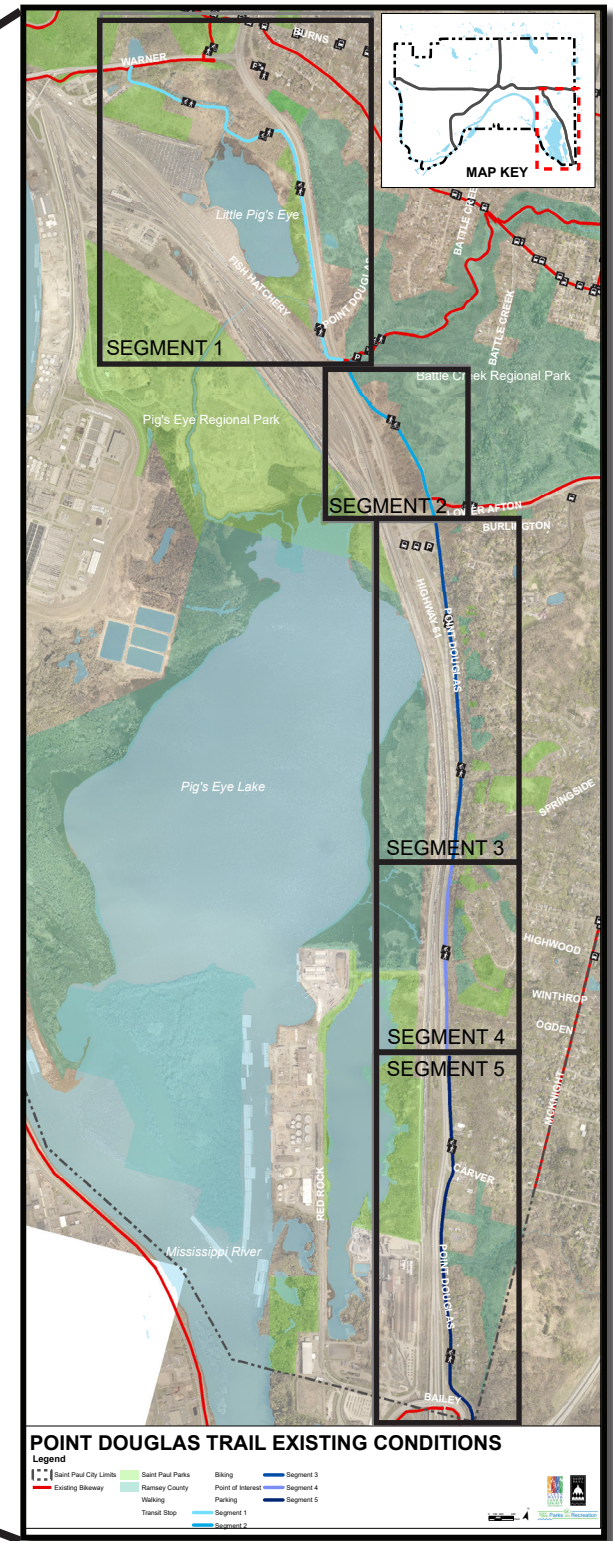
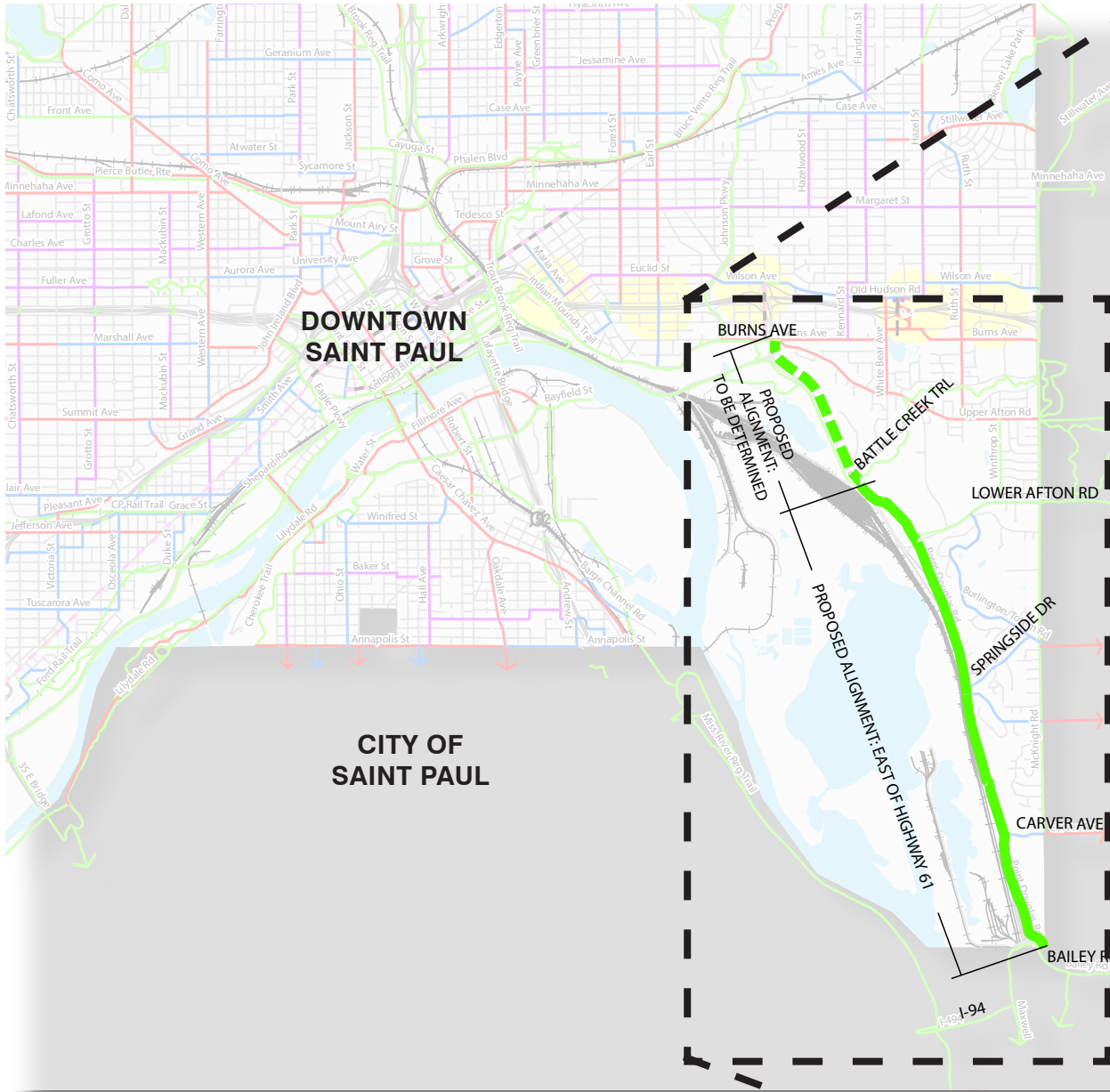
### The Regional Trail Network

Regional trails and regional trail search corridors are designated through the Metropolitan Council's Regional Parks Policy Plan. Designating a regional trail alignment requires the city to prepare a regional trail master plan to be approved by the Metropolitan Council.

Alignments identified in blue represent existing or planned trail alignments for which the City should submit a trail master plan for Metropolitan Council approval.

The city should seek an amendment to the Regional Parks Policy Plan for the designation of planned trails that are not within a regional trail search corridor.

# PROJECT OVERVIEW





# 3. OPPORTUNITIES AND CONSTRAINTS



## OPPORTUNITIES

1. Fish Hatchery Reconstruction (2022-2023)
2. Existing underpass at Battle Creek Trailhead
3. Future connection to trail for Gold Line Bus Rapid Transit

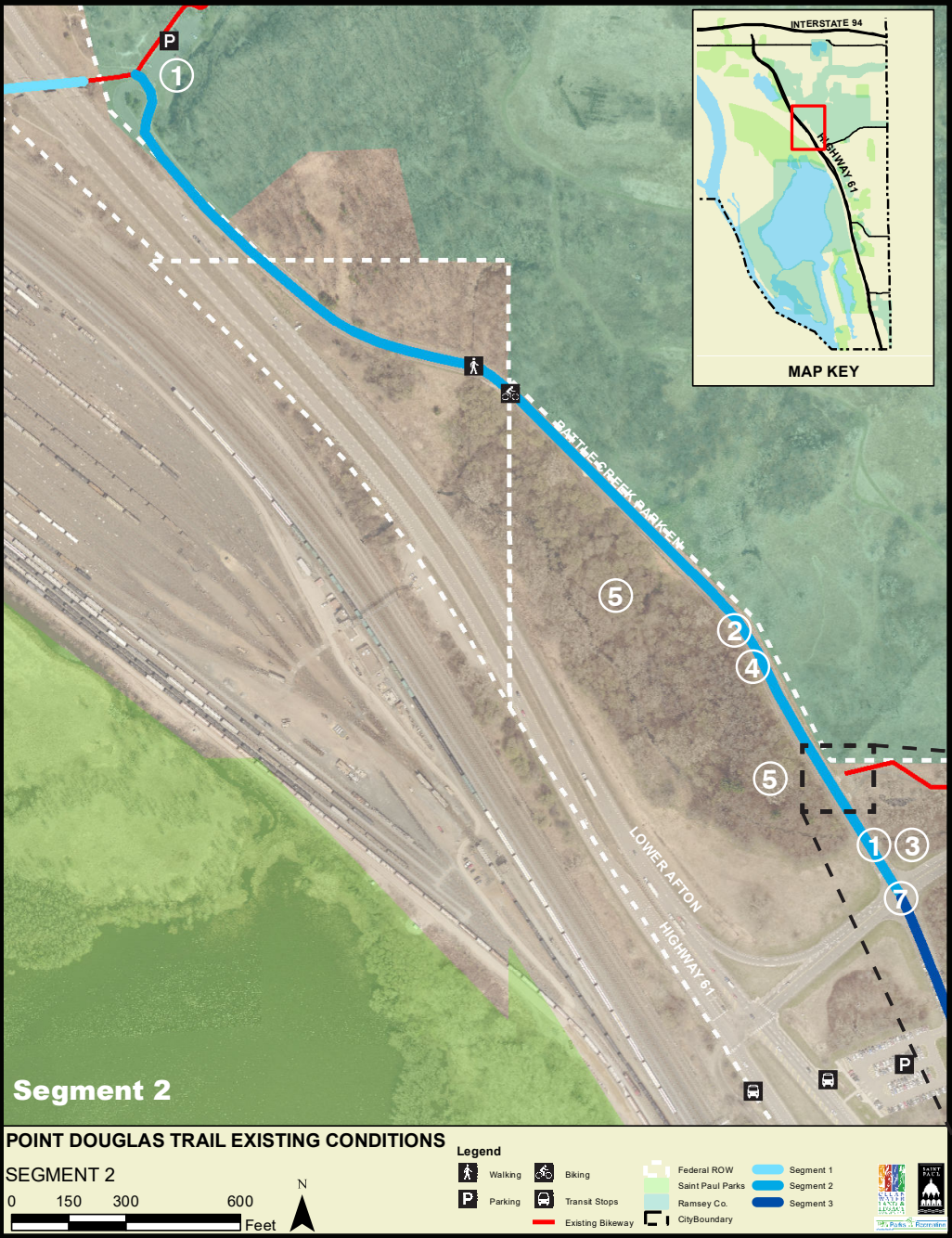
## CONSTRAINTS

4. Slope and erosion issues (west of 61)
5. Unknown future Warner Rd Intersection Improvements
6. Vehicle noise along Hwy 61
7. Limited directional and wayfinding signs
8. Fish Hatchery Trail not a direct route to IMRP pedestrian bridge

# SEGMENT 1



# OPPORTUNITIES AND CONSTRAINTS...CONTINUED



## OPPORTUNITIES

1. Consider relocating trail head to Lower Afton to manage access
2. A 43'-6" roadway allows for an off-street trail and two drive lanes
3. Consider transferring Entrance Road ownership from City to Cnty
4. Entrance road is in disrepair allowing for an off-street trail when rebuilt

## CONSTRAINTS

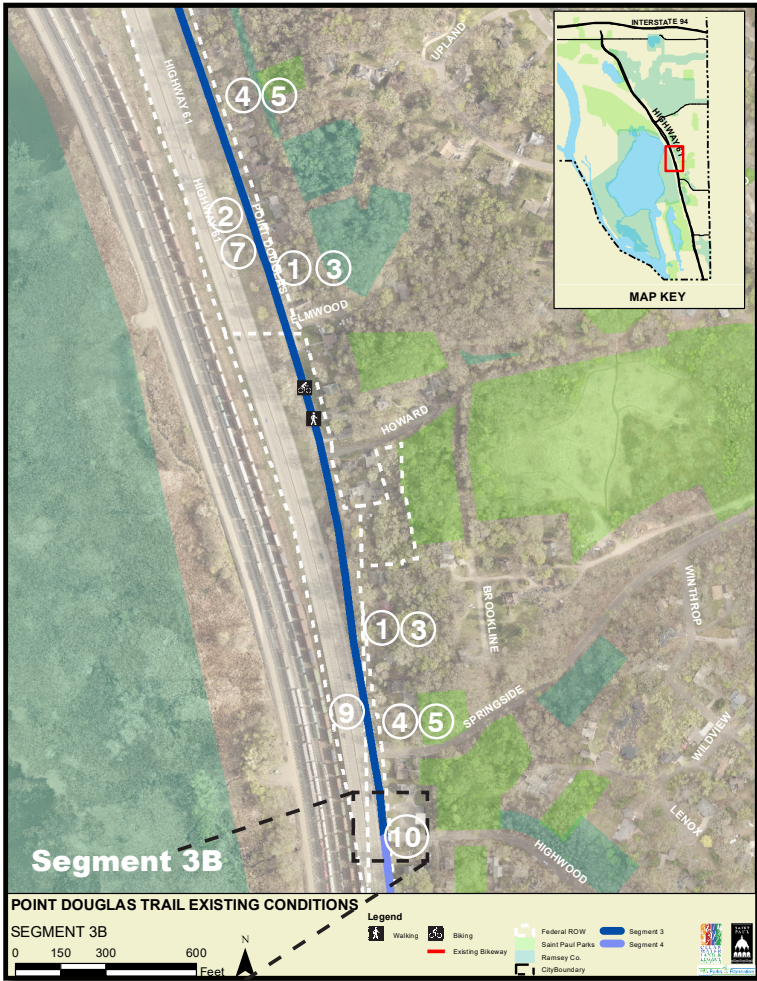
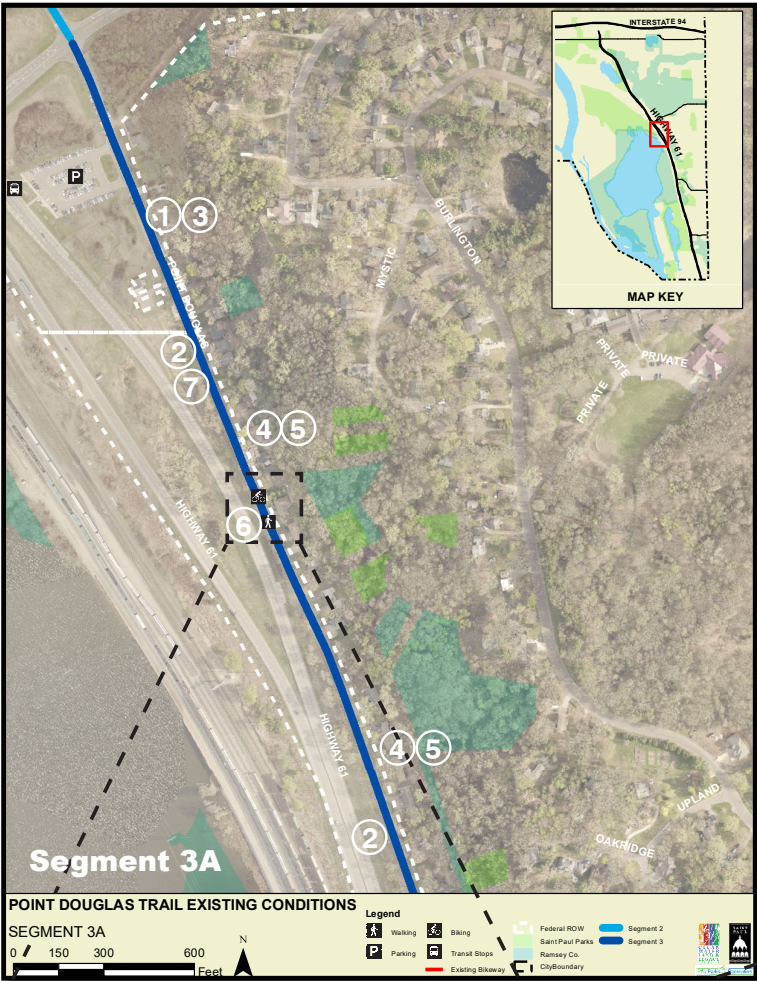
5. Dumping and trash accumulates along Entrance Road
6. Winter access and maintenance
7. Lower Afton intersection crossing needs enhancements
8. Limited directional and wayfinding signs



# SEGMENT 2



# OPPORTUNITIES AND CONSTRAINTS...CONTINUED



**OPPORTUNITIES**

- 1. Road in disrepair
- 2. Available ROW (between Point Douglas and 61)
- 3. MnDOT rehab scheduled for 2026

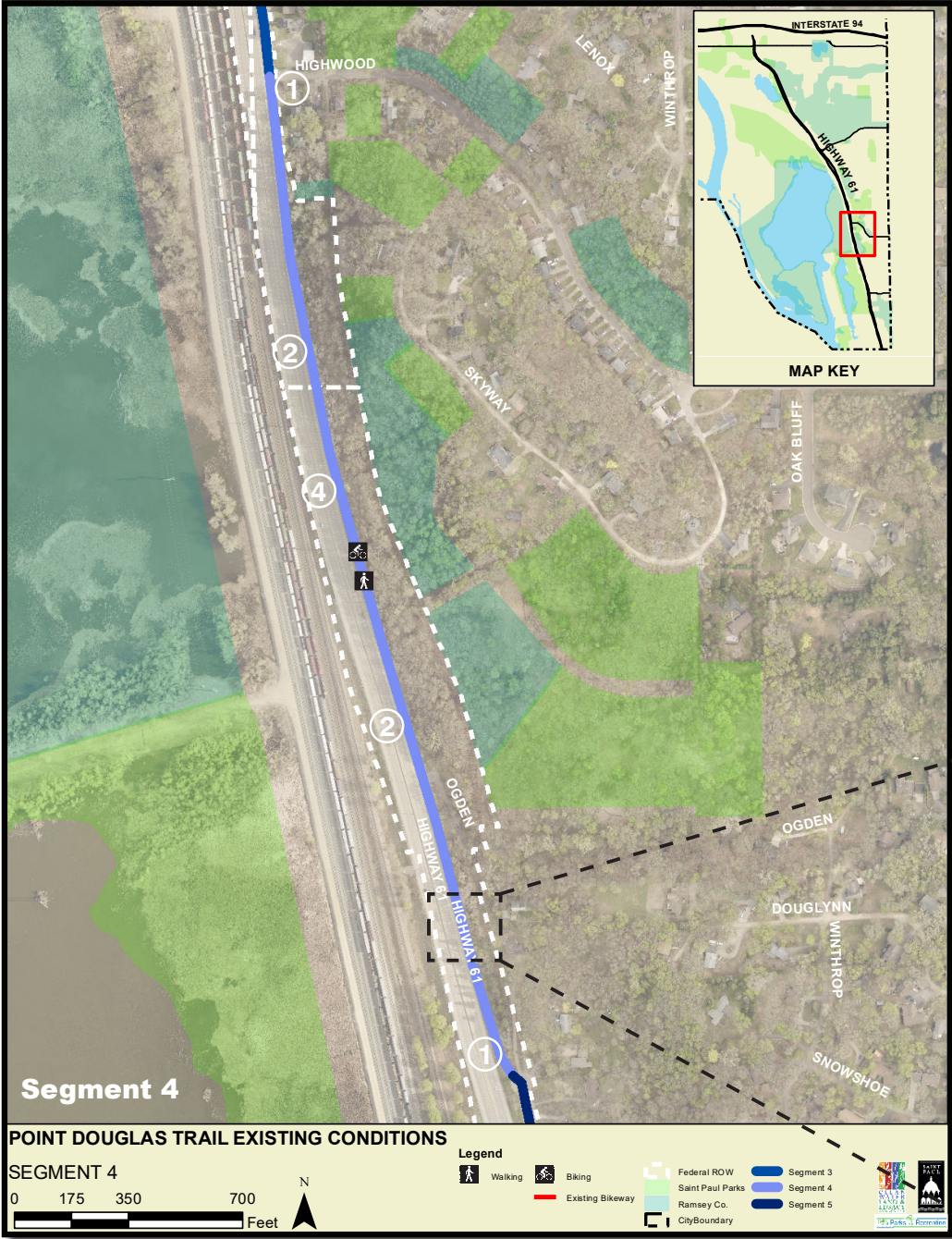
**CONSTRAINTS**

- 4. Residential homes and driveways on east side of road
- 5. R.O.W. boundary at edge of homes
- 6. Retaining walls most likely needed at pinch points
- 7. Overhead utilities, MnDOT fiber, stormwater on west side
- 8. Residential parking needs on east side of road
- 9. Limited snow storage at pinch points
- 10. Land acquisition likely needed at Highwood
- 11. Limited directional and wayfinding signs

# SEGMENT 3



# OPPORTUNITIES AND CONSTRAINTS...CONTINUED



**OPPORTUNITIES**

1. Existing off-street trail from Highwood to south of Ogden

**CONSTRAINTS**

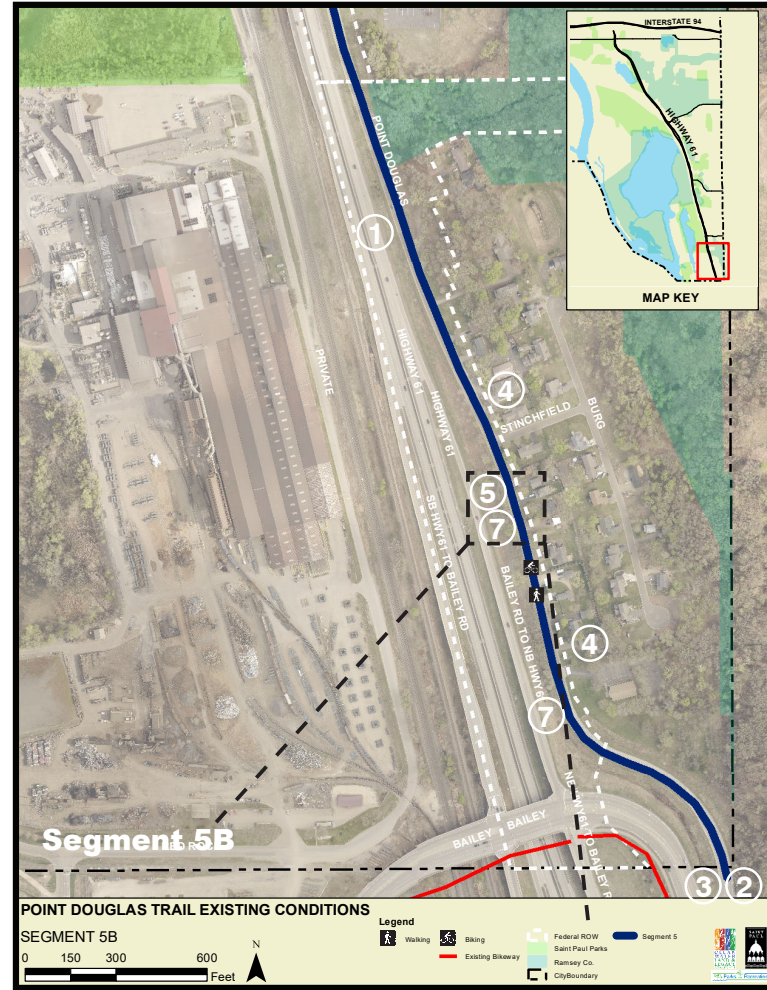
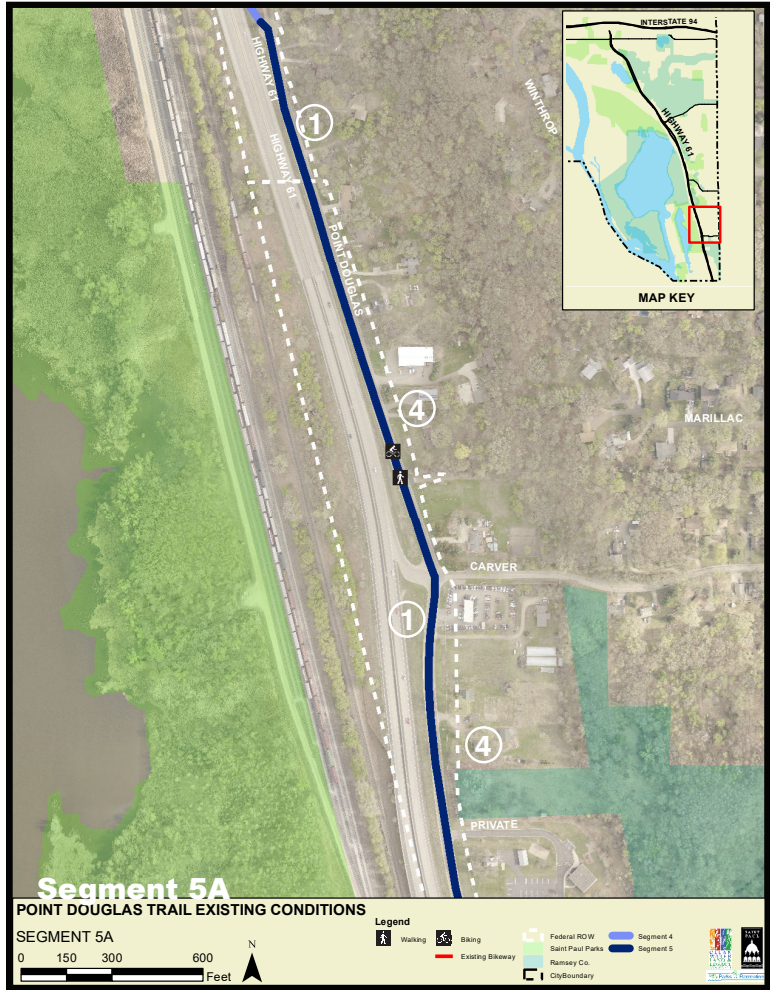
- 2. Limited snow storage along segment 4
- 3. Limited directional and wayfinding signs
- 4. Vehicle noise along Hwy 61



**SEGMENT 4**



# OPPORTUNITIES AND CONSTRAINTS...CONTINUED



## OPPORTUNITIES

1. Adequate road width 37' wide (curb to curb) north of Stinchfield
2. Connects to Washington Cnty and future Pt Douglas Trail

## CONSTRAINTS

3. Bailey Road crossing difficulties
4. Homes, driveways, mailboxes east side of road
5. Limited road width 31' wide (curb to curb) south of Stinchfield
6. Limited directional and wayfinding signs
7. Drainage swale west side of Point Douglas Rd

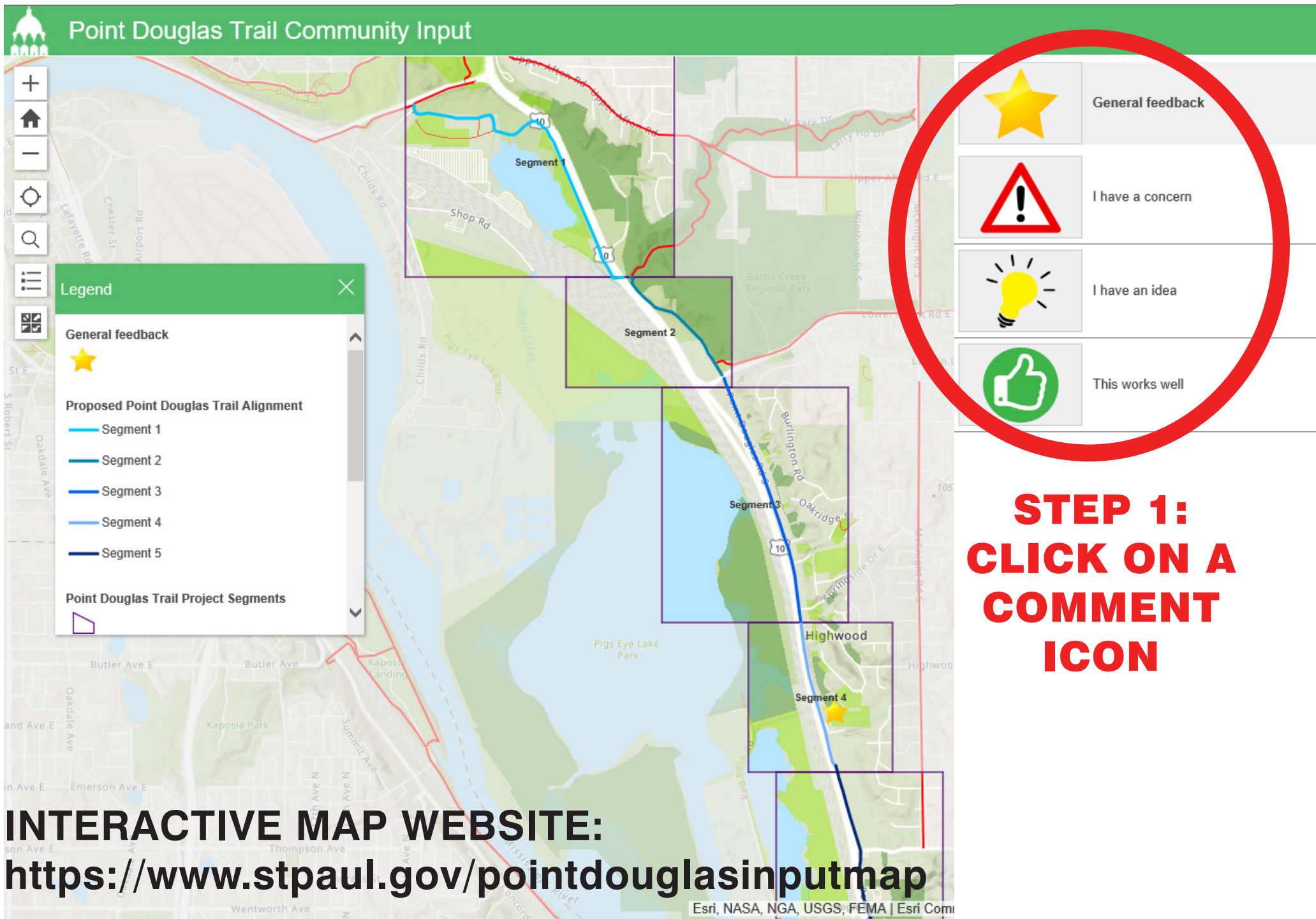


**SEGMENT 5**



# 5. INTERACTIVE MAP

**Point Douglas Trail Community Input**



The image displays an interactive map interface for the Point Douglas Trail Community Input. The map shows five segments of the trail, color-coded as follows:

- Segment 1: Light blue
- Segment 2: Dark blue
- Segment 3: Medium blue
- Segment 4: Light blue
- Segment 5: Dark blue

A legend on the left side of the map provides details for the trail alignment and segments. A feedback panel on the right side of the map is highlighted with a red circle and contains the following icons and text:

- Yellow star icon: General feedback
- Red triangle with exclamation mark icon: I have a concern
- Yellow lightbulb icon: I have an idea
- Green thumbs up icon: This works well

**STEP 1: CLICK ON A COMMENT ICON**

**INTERACTIVE MAP WEBSITE:**  
<https://www.stpaul.gov/pointdouglasinputmap>

Esri, NASA, NGA, USGS, FEMA | Esri Com



# INTERACTIVE MAP...CONTINUED

Point Douglas Trail Community Input

**STEP 2:  
ZOOM IN  
ON VIRTUAL MAP**

**STEP 3:  
CLICK  
"SUBMIT REPORT"**

General feedback

+ Submit a Report

Legend

- General feedback
- Proposed Point Douglas Trail Alignment
  - Segment 1
  - Segment 2
  - Segment 3
  - Segment 4
  - Segment 5
- Point Douglas Trail Project Segments

Point Douglas Trail Community Input

**STEP 4:  
COMPLETE  
REPORT  
AND  
CLICK  
"REPORT IT"**

General feedback

Location

Click the map to draw the location.

Enter an address or search term

Add a comment

Name

Email

Comment

Add a photo

Browse

Report It

# INTERACTIVE MAP...CONTINUED

Point Douglas Trail Community Input

The map displays the Point Douglas Trail in St. Paul, Minnesota, divided into five segments: Segment 1 (near the bridge), Segment 2, Segment 3, Segment 4 (near Highwood), and Segment 5 (near the river). A red circle highlights a feedback menu with the following options:

- General feedback (Yellow star icon)
- I have a concern (Warning triangle icon)
- I have an idea (Lightbulb icon)
- This works well (Thumbs up icon)

**STEP 5:  
REPEAT STEP 1  
AND  
CLICK ON A  
COMMENT ICON**

**INTERACTIVE MAP WEBSITE:  
<https://www.stpaul.gov/pointdouglasinputmap>**



# NEXT STEPS

- FOCUS GROUPS & POP-UP MEETINGS
- DEVELOP TRAIL ALIGNMENT(S)
- TENTATIVE SCHEDULE (*Italics = Public Review Periods*)

<b>Mar 2020</b>	<b>Survey</b>
<b>Oct</b>	<b>Release Opportunity and Constraints Presentation - Virtual</b>
<i>Nov</i>	<i>Public Review Period</i>
<b>Nov</b>	<b>Release Trail Alignment Presentation – Virtual</b>
<i>Nov</i>	<i>Public Review Period</i>
<i>Nov</i>	<i>Parks and Rec Commission &amp; Transportation Committee Review</i>
<b>Dec</b>	<b>Release Preferred Trail Alignment Presentation - Virtual</b>
<i>Jan 2021</i>	<i>Parks and Rec Commission &amp; Transportation Committee Approval</i>
<b>Feb</b>	<b>Final Master Plan Document</b>
<b>Mar</b>	<b>St Paul City Council Approval</b>
<b>April</b>	<b>Met Council Approval</b>

**Project Manager: Brett Hussong**

**Email: [brett.hussong@ci.stpaul.mn.us](mailto:brett.hussong@ci.stpaul.mn.us)**

**Project Website: [www.stpaul.gov/PointDouglasTrail](http://www.stpaul.gov/PointDouglasTrail)**

**Interactive Map: <https://www.stpaul.gov/pointdouglassinputmap>**

